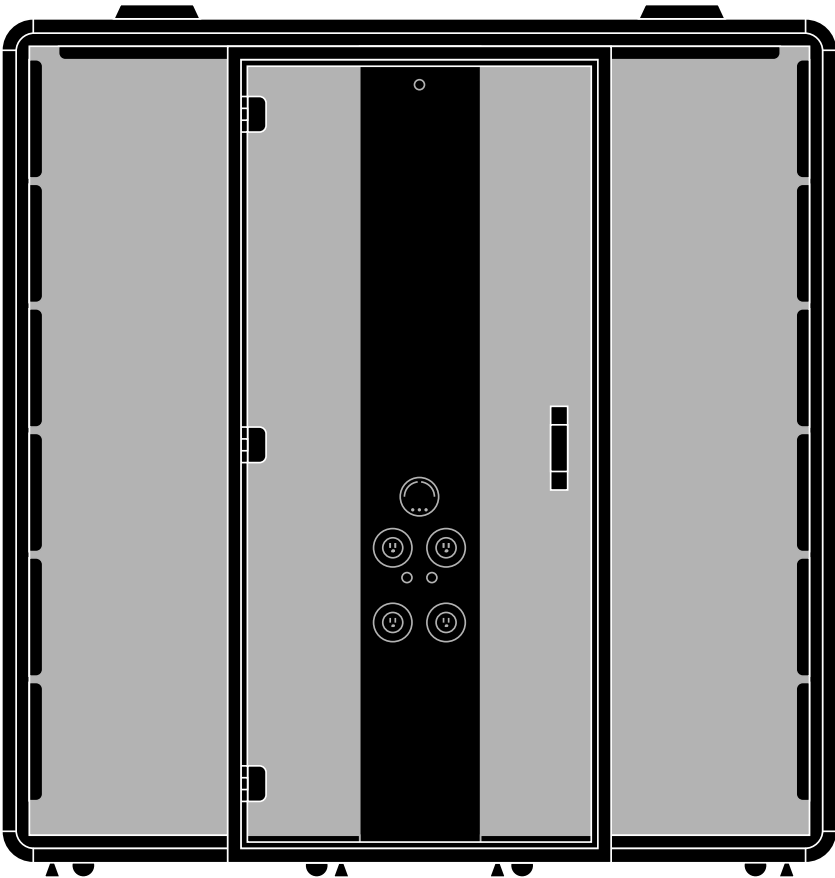


HushFree.L

Hushoffice | 2024 | Made in Poland

Overview

- Motion sensor-activated LED ceiling light with user-adjustable light brightness and temperature
- Motion sensor activated ventilation with user-adjustable fan speeds
- Powered by a single 3-prong electrical cord
- 8 specifiable interior power or data recepticals
- 2 CAT6 data recepticals
- Integrated high resolution touch screen to control pod settings, adjust lighting and airflow, and book calendar reservations
- Optional furniture, including sofas and tables
- Integrated casters and leveling feet
- Seismic floor fixing
- 4 cutouts for sprinkler
- 4 cutouts for audio or visual alarm
- Optional vesa monitor mount on center or side columns



Surfaces

- Case Exterior TFL
- Cosmos Grey (HOL-AGC)
 - White (HOL-ABB)
- Case Interior Fabric
- Gabriel Athlon Plus (HAP)
- Rear Glass
- Clear (HOG-PRZ)
- Door Glass
- Clear (HOG-PRZ)
- Table Laminate Grade A
- White (HFL-ABB)
- Table Laminate Grade B
- Velvet Black (HFL-ABA)
- Sofa Seat Fabric
- Gabriel Athlon (HA)
- Sofa Backrest Fabric
- Dark Grey (HA-DKG)
 - Light Grey (HA-LTG)

To order, specify:

1. Product number, including
- 1

Monitor bracket selection
- N

No monitor brackets
- C

Center column monitor bracket (add \$400.00 list)
- S

1 side wall monitor bracket (add \$250.00 list)
- B

2 side wall monitor brackets (add \$500.00 list)
- 2

Center column data and power (top row)
- 1

Left with power socket, right with power socket
- 2

Left with power socket, right with USB-A and USB-C (add \$500.00 list)
- 3

Left with power socket, right with HDMI (add \$140.00 list)
- 3

Center column data and power (bottom row)
- N

No power specification
- 1

Left with power socket, right with power socket (add \$500.00 list)
- 2

Left with power socket, right with USB-A and USB-C (add \$1,000.00 list)
- 3

Left with power socket, right with HDMI (add \$640.00 list)
- 4

Right column data and power
- N

No power specification
- 1

Top with power socket, bottom with power socket (add \$500.00 list)
- 4

Top with USB-A and USB-C, bottom with power socket (add \$1,000.00 list)
- 5

Top with HDMI, bottom with power socket (add \$640.00 list)
- 6

Top with CAT6, bottom with power socket (add \$445.00 list)
- 5

Left column data and power
- N

No power specification
- 1

Top with power socket, bottom with power socket (add \$500.00 list)
- 4

Top with USB-A and USB-C, bottom with power socket (add \$1,000.00 list)
- 5

Top with HDMI, bottom with power socket (add \$640.00 list)
- 6

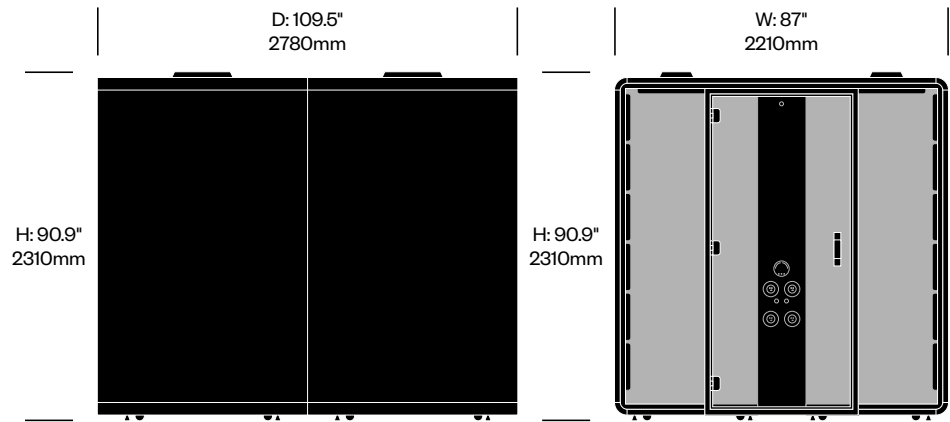
Top with CAT6, bottom with power socket (add \$445.00 list)

2. Case exterior TFL color

3. Case interior fabric and color

4. Rear glass color

5. Door glass color



| Acoustic Pod | Number | 12345 | List Price |
|--------------|--------------|---|------------|
| | HCHO-LTP6-NN | <div></div> <div></div> <div></div> <div></div> <div></div> | 47,600.00 |

To order, specify:

1. Product number, including
- 1

Monitor bracket selection
- N

No monitor brackets
- C

Center column monitor bracket (add \$400.00 list)
- S

1 side wall monitor bracket (add \$250.00 list)
- B

2 side wall monitor brackets (add \$500.00 list)
- 2

Center column data and power (top row)
- 1

Left with power socket, right with power socket
- 2

Left with power socket, right with USB-A and USB-C (add \$500.00 list)
- 3

Left with power socket, right with HDMI (add \$140.00 list)
- 3

Center column data and power (bottom row)
- N

No power specification
- 1

Left with power socket, right with power socket (add \$500.00 list)
- 2

Left with power socket, right with USB-A and USB-C (add \$1,000.00 list)
- 3

Left with power socket, right with HDMI (add \$640.00 list)
- 4

Right column data and power
- N

No power specification
- 1

Top with power socket, bottom with power socket (add \$500.00 list)
- 4

Top with USB-A and USB-C, bottom with power socket (add \$1,000.00 list)
- 5

Top with HDMI, bottom with power socket (add \$640.00 list)
- 6

Top with CAT6, bottom with power socket (add \$445.00 list)
- 5

Left column data and power
- N

No power specification
- 1

Top with power socket, bottom with power socket (add \$500.00 list)
- 4

Top with USB-A and USB-C, bottom with power socket (add \$1,000.00 list)
- 5

Top with HDMI, bottom with power socket (add \$640.00 list)
- 6

Top with CAT6, bottom with power socket (add \$445.00 list)

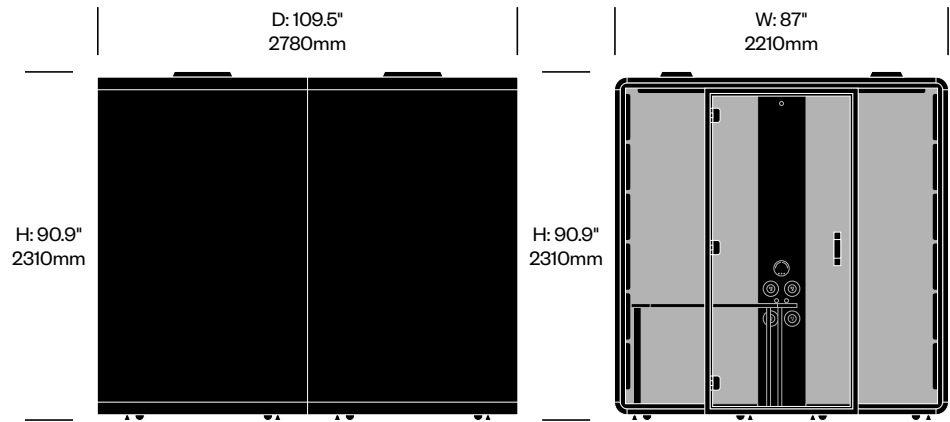
2. Case exterior TFL color

3. Case interior fabric and color

4. Rear glass color

5. Door glass color

6. Table laminate color



| Acoustic Pod with Table | Number | 12345 | List Price |
|-------------------------|--------------|---|------------|
| Laminate Grade A | HCHO-LTP6-NT | <div></div> <div></div> <div></div> <div></div> <div></div> | 48,850.00 |
| Laminate Grade B | HCHO-LTP6-NT | <div></div> <div></div> <div></div> <div></div> <div></div> | 49,200.00 |

To order, specify:

1. Product number, including
- 1

Monitor bracket selection
- N

No monitor brackets
- C

Center column monitor bracket (add \$400.00 list)
- S

1 side wall monitor bracket (add \$250.00 list)
- B

2 side wall monitor brackets (add \$500.00 list)
- 2

Center column data and power (top row)
- 1

Left with power socket, right with power socket
- 2

Left with power socket, right with USB-A and USB-C (add \$500.00 list)
- 3

Left with power socket, right with HDMI (add \$140.00 list)
- 3

Center column data and power (bottom row)
- N

No power specification
- 1

Left with power socket, right with power socket (add \$500.00 list)
- 2

Left with power socket, right with USB-A and USB-C (add \$1,000.00 list)
- 3

Left with power socket, right with HDMI (add \$640.00 list)
- 4

Right column data and power
- N

No power specification
- 1

Top with power socket, bottom with power socket (add \$500.00 list)
- 4

Top with USB-A and USB-C, bottom with power socket (add \$1,000.00 list)
- 5

Top with HDMI, bottom with power socket (add \$640.00 list)
- 6

Top with CAT6, bottom with power socket (add \$445.00 list)
- 5

Left column data and power
- N

No power specification
- 1

Top with power socket, bottom with power socket (add \$500.00 list)
- 4

Top with USB-A and USB-C, bottom with power socket (add \$1,000.00 list)
- 5

Top with HDMI, bottom with power socket (add \$640.00 list)
- 6

Top with CAT6, bottom with power socket (add \$445.00 list)

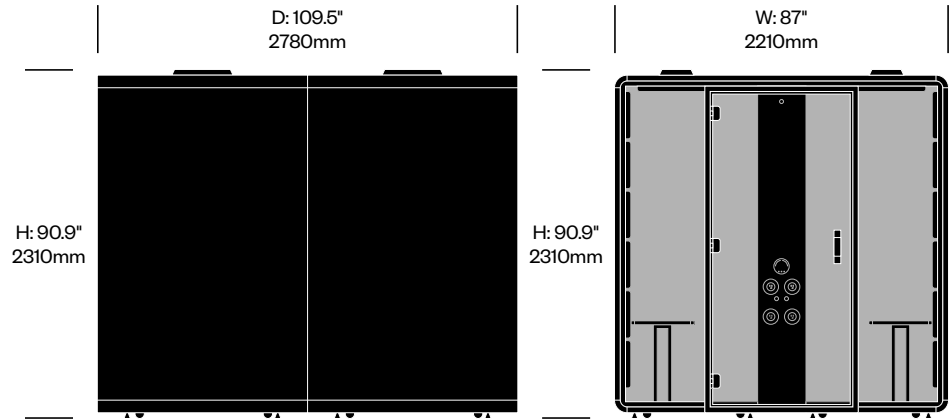
2. Case exterior TFL color

3. Case interior fabric and color

4. Rear glass color

5. Door glass color

6. Side table(s) laminate color



| Acoustic Pod with Side Table(s) | Number | 12345 | List Price |
|---------------------------------|--------------|---|------------|
| 1 Side Table | HCHO-LTP6-N1 | <div></div> <div></div> <div></div> <div></div> <div></div> | 48,050.00 |
| 2 Side Tables | HCHO-LTP6-N2 | <div></div> <div></div> <div></div> <div></div> <div></div> | 48,500.00 |

To order, specify:

1. Product number, including
- 1

Monitor bracket selection

N

No monitor brackets

C

Center column monitor bracket (add \$400.00 list)

S

1 side wall monitor bracket (add \$250.00 list)

B

2 side wall monitor brackets (add \$500.00 list)
- 2

Center column data and power (top row)

1

Left with power socket, right with power socket

2

Left with power socket, right with USB-A and USB-C (add \$500.00 list)

3

Left with power socket, right with HDMI (add \$140.00 list)
- 3

Center column data and power (bottom row)

N

No power specification

1

Left with power socket, right with power socket (add \$500.00 list)

2

Left with power socket, right with USB-A and USB-C (add \$1,000.00 list)

3

Left with power socket, right with HDMI (add \$640.00 list)
- 4

Right column data and power

N

No power specification

1

Top with power socket, bottom with power socket (add \$500.00 list)

4

Top with USB-A and USB-C, bottom with power socket (add \$1,000.00 list)

5

Top with HDMI, bottom with power socket (add \$640.00 list)

6

Top with CAT6, bottom with power socket (add \$445.00 list)
- 5

Left column data and power

N

No power specification

1

Top with power socket, bottom with power socket (add \$500.00 list)

4

Top with USB-A and USB-C, bottom with power socket (add \$1,000.00 list)

5

Top with HDMI, bottom with power socket (add \$640.00 list)

6

Top with CAT6, bottom with power socket (add \$445.00 list)

2. Case exterior TFL color

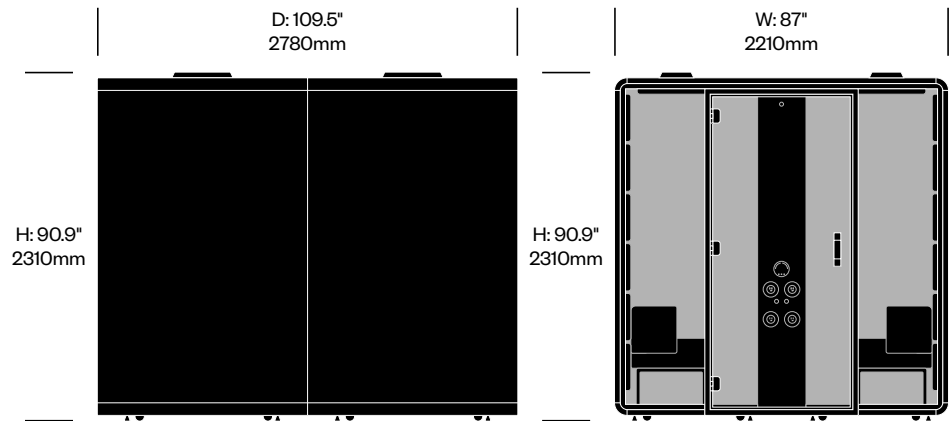
3. Case interior fabric and color

4. Rear glass color

5. Door glass color

6. Sofas seat fabric color

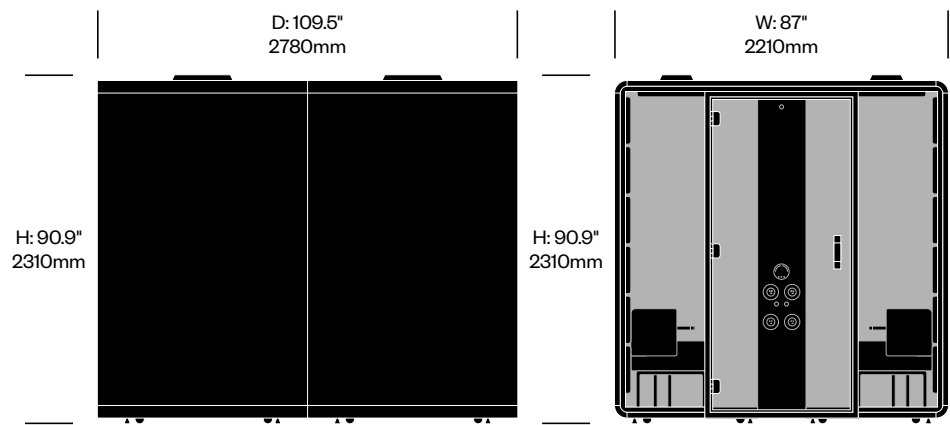
7. Sofas backrest fabric color



| Acoustic Pod with Sofas | Number | 1 | 2 | 3 | 4 | 5 | List Price |
|-------------------------|--------------|---|---|---|---|---|------------|
| 2 Sofas | HCHO-LTP6-N2 | ■ | - | ■ | ■ | ■ | 51,900.00 |
| 4 Sofas | HCHO-LTP6-N4 | ■ | - | ■ | ■ | ■ | 56,200.00 |

To order, specify:

1. Product number, including
 - 1 Monitor bracket selection
 - N No monitor brackets
 - C Center column monitor bracket (add \$400.00 list)
 - S 1 side wall monitor bracket (add \$250.00 list)
 - B 2 side wall monitor brackets (add \$500.00 list)
 - 2 Center column data and power (top row)
 - 1 Left with power socket, right with power socket
 - 2 Left with power socket, right with USB-A and USB-C (add \$500.00 list)
 - 3 Left with power socket, right with HDMI (add \$140.00 list)
 - 3 Center column data and power (bottom row)
 - N No power specification
 - 1 Left with power socket, right with power socket (add \$500.00 list)
 - 2 Left with power socket, right with USB-A and USB-C (add \$1,000.00 list)
 - 3 Left with power socket, right with HDMI (add \$640.00 list)
 - 4 Right column data and power
 - N No power specification
 - 1 Top with power socket, bottom with power socket (add \$500.00 list)
 - 4 Top with USB-A and USB-C, bottom with power socket (add \$1,000.00 list)
 - 5 Top with HDMI, bottom with power socket (add \$640.00 list)
 - 6 Top with CAT6, bottom with power socket (add \$445.00 list)
 - 5 Left column data and power
 - N No power specification
 - 1 Top with power socket, bottom with power socket (add \$500.00 list)
 - 4 Top with USB-A and USB-C, bottom with power socket (add \$1,000.00 list)
 - 5 Top with HDMI, bottom with power socket (add \$640.00 list)
 - 6 Top with CAT6, bottom with power socket (add \$445.00 list)
2. Case exterior TFL color
3. Case interior fabric and color
4. Rear glass color
5. Door glass color
6. Side table(s) laminate color
7. Sofas seat fabric color
8. Sofas backrest fabric color



| Acoustic Pod with Sofas and Side Table(s) | Number | 1 | 2 | 3 | 4 | 5 | List Price |
|---|--------------|---|---|---|---|---|------------|
| 1 Side Table and 2 Sofas | HCHO-LTP6-12 | ■ | ■ | ■ | ■ | ■ | 52,350.00 |
| 2 Side Tables and 2 Sofas | HCHO-LTP6-22 | ■ | ■ | ■ | ■ | ■ | 52,800.00 |
| 1 Side Table and 4 Sofas | HCHO-LTP6-14 | ■ | ■ | ■ | ■ | ■ | 56,650.00 |
| 2 Side Tables and 4 Sofas | HCHO-LTP6-24 | ■ | ■ | ■ | ■ | ■ | 57,100.00 |

HushFree.L

Hushoffice | 2024 | Made in Poland

To order, specify:

- 1. Product number
- 2. Laminate color

D: 43.25"
1100mm

W: 51.2"
1300mm

H: 29"
735mm

H: 29"
735mm

D: 43.25"
1100mm

W: 51.2"
1300mm

H: 29"
735mm

H: 29"
735mm

D: 43.25"
1100mm

W: 51.2"
1300mm

H: 29"
735mm

H: 29"
735mm

D: 16.5"
420mm

W: 123.4"
1234mm

H: 22.25"
565mm

H: 22.25"
565mm

D: 16.5"
420mm

W: 123.4"
1234mm

H: 22.25"
565mm

H: 22.25"
565mm

D: 16.5"
420mm

W: 123.4"
1234mm

H: 22.25"
565mm

H: 22.25"
565mm

To order, specify:

- 1. Product number
- 2. Seat fabric and color
- 3. Backrest fabric and color

D: 21"
535mm

W: 48.5"
1230mm

H: 27"
685mm

SH: 18.6"
1234mm

AH: 27"
685mm

D: 21"
535mm

W: 48.5"
1230mm

H: 27"
685mm

SH: 18.6"
1234mm

AH: 27"
685mm

D: 21"
535mm

W: 48.5"
1230mm

H: 27"
685mm

SH: 18.6"
1234mm

AH: 27"
685mm

D: 21"
535mm

W: 48.5"
1230mm

H: 27"
685mm

SH: 18.6"
1234mm

AH: 27"
685mm

D: 21"
535mm

W: 48.5"
1230mm

H: 27"
685mm

SH: 18.6"
1234mm

AH: 27"
685mm

D: 21"
535mm

W: 48.5"
1230mm

H: 27"
685mm

SH: 18.6"
1234mm

AH: 27"
685mm

To order, specify:

1. Product number

| Occupancy Light | Number | List Price |
|----------------------|-----------|------------|
| | HCHO-FAQQ | 580.00 |
| Center Monitor Mount | Number | List Price |
| | HCHO-FACM | 460.00 |
| Side Monitor Mount | Number | List Price |
| | HCHO-FASM | 290.00 |