

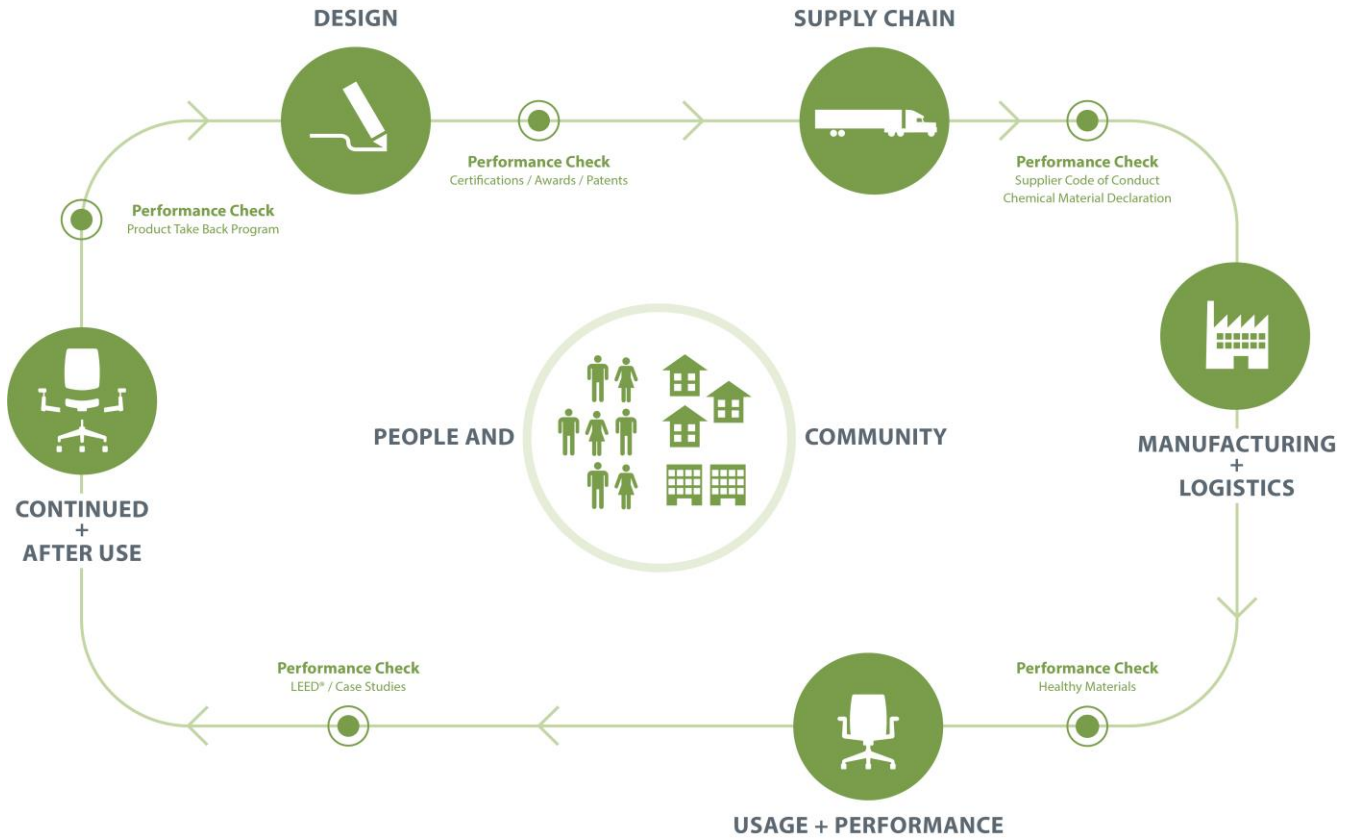
# Product Environmental Data Sheet

Sector: North America



## Gigi II

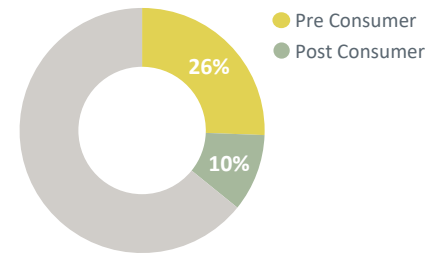
Category: Seating



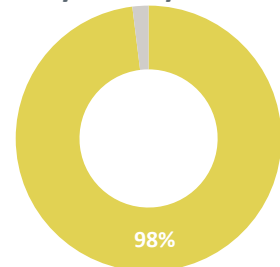
Sinking into Gigi II seating is like being transported to a breezy porch or luxury resort, bringing a new level of sophistication and ease to the workplace, inside or out. The hand-woven, curvilinear shape is supported by an elegant yet sturdy frame.

Gigi is manufactured in Cirebon, Indonesia. When a product reaches the end of its useful life, customers and partners are encouraged to avoid landfilling and instead pursue second life options – through remanufacturing or charitable donations, or recycling of materials.

### Recycled Content



### Recyclability



Material	Material Weight
Aluminum	9.86 lbs (34%)
Steel	9.80 lbs (34%)
Plastic	8.40 lbs (29%)
Other	0.56 lbs (2%)
Total	28.62 lbs (100%)

## Life Cycle Assessment (LCA)

Haworth is committed to better understanding and reducing the environmental impacts of our products and operations.

Life Cycle Assessments (LCAs) are tools which allow us to evaluate potential environmental impacts of our products from cradle-to-grave including raw material extraction, pre-processing, production, product distribution, use and maintenance, and end-of-life management.

Results of LCA studies provide value in the identification of cost savings, improvement of design and material evaluation, advancement of procurement and transportation decision making, new product development criteria, as well as ultimately reducing Haworth's impact on the environment through continuous improvement efforts.

## Material Chemistry

Haworth is committed to providing our customers with products that support safe and healthy environments. We are working diligently toward the ongoing reduction of hazardous chemicals associated with parts and materials we source, as new safer alternatives become commercially available.

These include, among others, PVC, benzidine dyes, hexavalent chromium, certain hazardous phthalates, PBDE flame retardants, and those chemicals known to contribute towards ozone depletion.

We are committed to achieving our goal of being transparent with our customers on our progress.

## Certifications

We strive for solutions that are neutral to the environment, with positive impacts on human health. Our products are designed and built leveraging global knowledge and best practices. Many of our products have earned top certifications such as Greenguard® and BIFMA level™.

## Building Standards

In support of building standards such as Leadership in Energy and Environmental Design, LEED® v4 and WELL Building Standard®v2:

Low Emitting Materials:

- Most Haworth products comply with ANSI/BIFMA e3-2014e Credit 7.6.1 and 7.6.2 demonstrated via GREENGUARD certificates found on [spot.ul.com](http://spot.ul.com)

Responsible Sourcing of Raw Materials:

- Most Haworth wood products are available as FSC® Mix 70%.
- Most Haworth products are composed of high recycled content.

Environmental Product Declarations (EPDs):

- Product-specific Type III EPDs are available for select high-volume products.