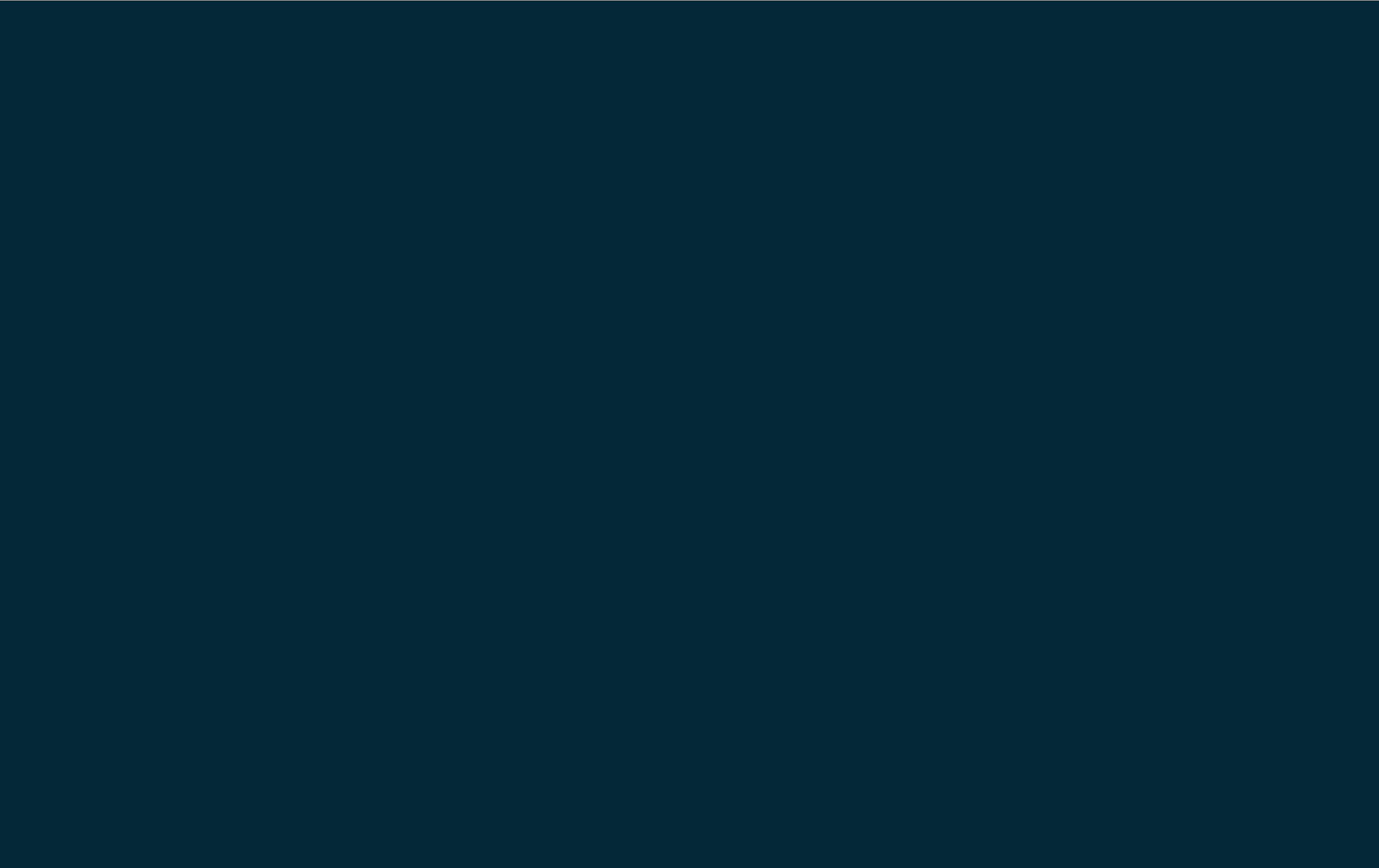


HAWORTH

# Trivati Insight









# Contents

<b>BUSINESS NEEDS</b>	<b>4</b>	<b>DESIGN</b>	<b>6</b>	<b>TECHNICAL GUIDE</b>	<b>9</b>	Starters + Posts	29
		Perspective	6	Product Logic	10	Dimensional Logic	30
		Collaborative Spaces	8	Entrance Systems	12		
				Glass Partitions	20	<b>FINISHES</b>	<b>32</b>
				Solid Partitions	22	Frames + Tiles	33
				Combination Partitions	24		
				Transitions	26		





# Business Needs

Increased real estate costs are driving organizations to get creative with space utilization. For engagement, creativity, and innovation to flourish, businesses need spaces that support communication and collaboration, as well as individual focus and reflection. And, they are being driven to seek solutions that facilitate all of these activities within smaller open plans.

The Trivati® wall system gives you the design flexibility to create a wide variety of individual and team spaces within your floorplan. With the look and feel of permanent construction, Trivati complements existing architecture in a highly customizable solution that transforms your workspace. Tailor applications to meet every space need—from private offices to focus spaces to conference rooms. With Trivati, you can create a truly unique environment that supports your people as well as your culture and brand.







# Perspective

Trivati is an elegant, versatile, and highly customizable architectural wall system with all the presence of permanent walls. It can be customized to meet the demands of nearly any customer, creating spaces that speak to culture while providing support for a variety of workstyles. The light, modern scale and uncomplicated beauty will elevate any environment, providing a timeless look for team and individual spaces.

Using a three channel rail, Trivati can be fitted with one, two, or three layers of vertical insert panels. This enables you to fine tune aesthetics, visual and acoustical privacy, and budget room-by-room, while providing a cohesive look within your space. Layer glass, veneer, textiles, metal, integrated lighting, and many other materials to design atmospheres that reflect distinct identities and needs for your space.

As a demountable wall system, Trivati offers a flexible, long-term solution for changing environments. Compared to conventional construction, the adaptable design ensures interchangeability and future reuse, saving installation time and costs, and eliminating unnecessary waste.







DESIGN

# Collaborative Spaces





# Technical Guide

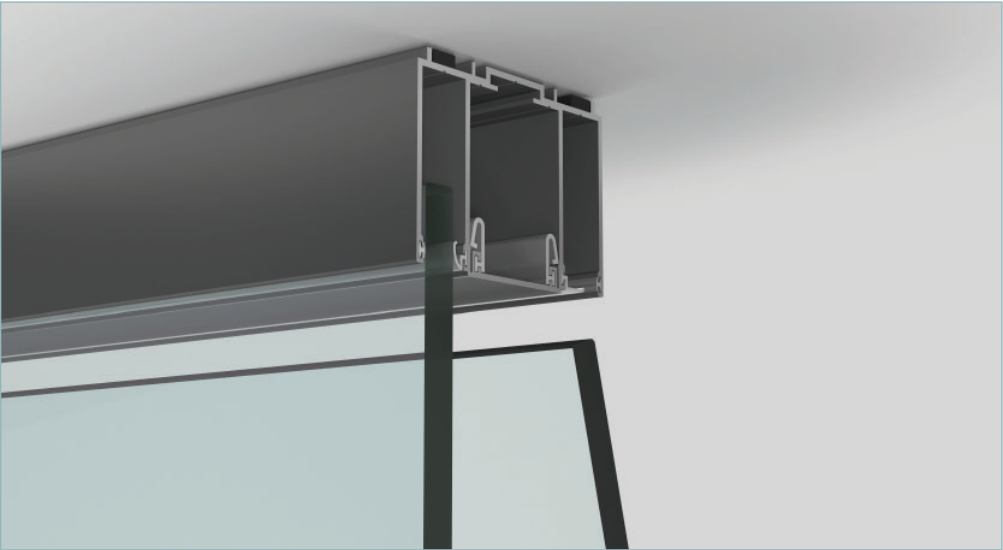
<b>PRODUCT LOGIC</b>	<b>10</b>	Sliding Doors	16	<b>TRANSITIONS</b>	<b>26</b>	<b>DIMENSIONAL LOGIC</b>	<b>30</b>
Fundamentals	10	Sliding Doors Leaves + Frames	17	2-Way + Inline Glazing	26	Rails	30
Doors + Partitions	11	Sliding Door Hardware	18	3-Way Glazing	27		
		Sliding Door Details	19	Fly-By Glazing	28		
				Starters + Posts	29		
<b>ENTRANCE SYSTEMS</b>	<b>12</b>	<b>PARTITIONS</b>	<b>20</b>				
Swing Doors	12	Glass Partitions	20				
Swing Doors Leaves + Frames	13	Solid Partitions	22				
Swing Door Hardware	14	Combination Partitions	24				
Swing Door Details	15						

Trivati is a component-based wall system that is created through a combination of rails—used in both vertical and horizontal configurations—that are cut and assembled onsite to align seamlessly with building-specific conditions and architecture. Choose a one channel rail option (1 1/4” wide) for lighter-scale applications where only one glass pane is required. Or, select the three channel rail (3 1/2” wide) that accommodates up to three inserts (glass, tiles, or a combination of glass and tiles) to suit your various acoustic and visual privacy needs. Complete your space with pivot-hinge or pocket doors and numerous hardware options, offering additional versatility and customization in creating solutions for any application or aesthetic.



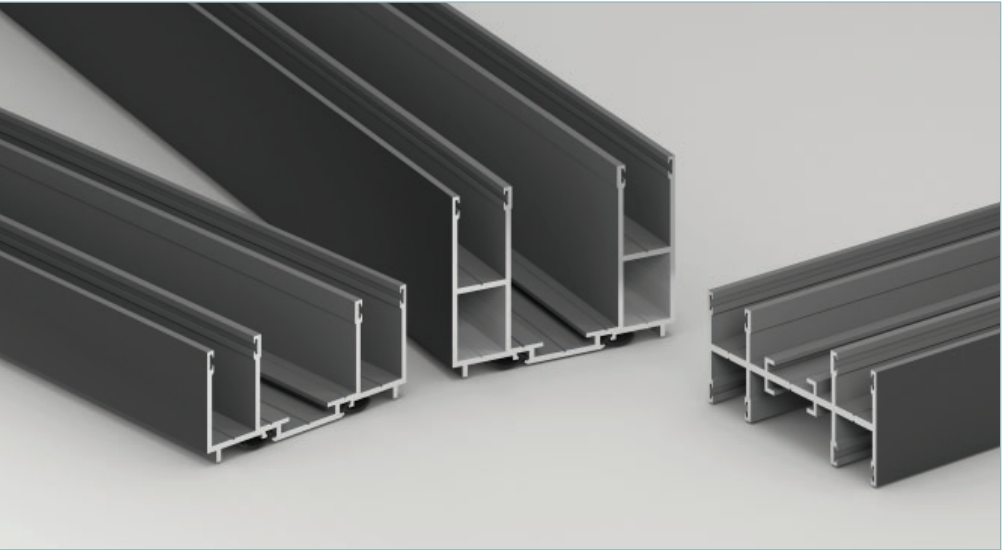
# Product Logic: Fundamentals

COMPONENT BASED WALL SYSTEM



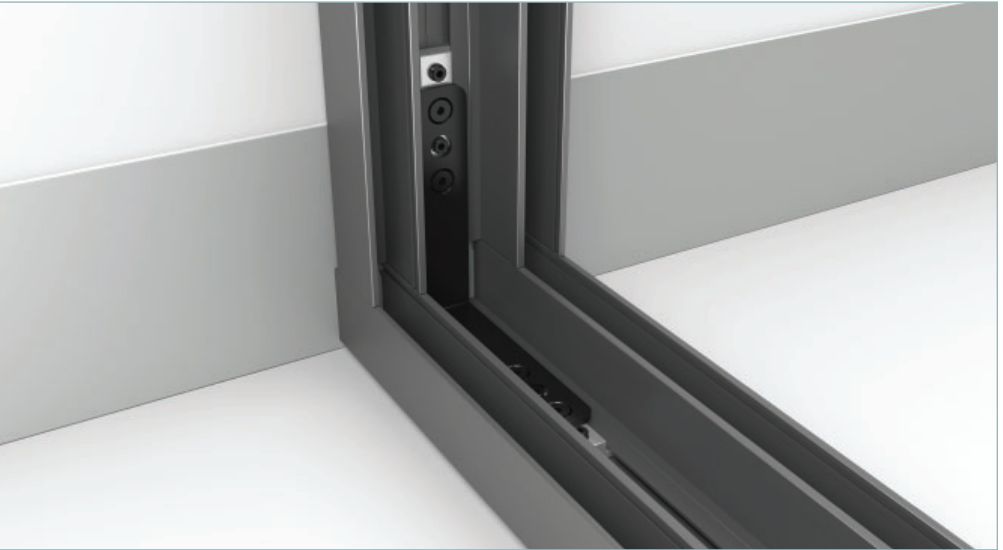
TOP RAIL

- Manufactured in lengths up to 12'



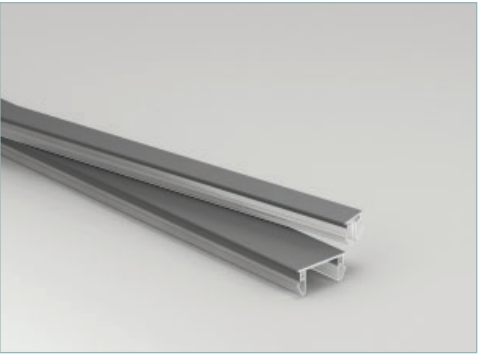
STARTER, BOTTOM, AND TRANSITION RAILS

- Manufactured in lengths up to 12'
- Rail extrusions used in horizontal or vertical configurations to create countless design details



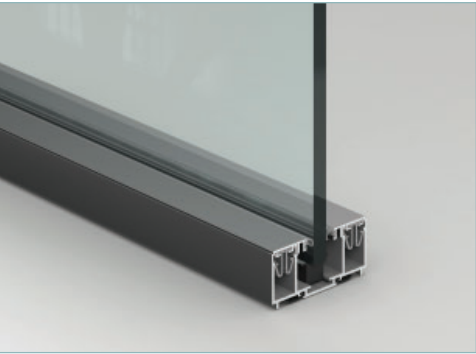
RAIL BRACKET KITS

- Rail bracket kits and components are hidden from view upon install and connect rail extrusions together in a seamless manner



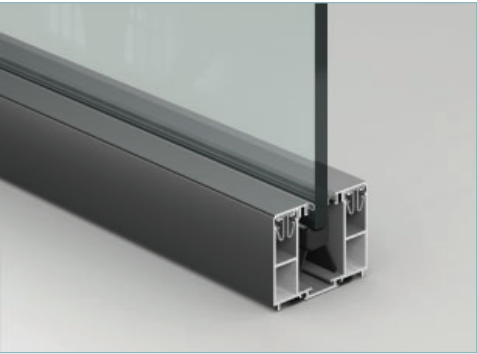
ALUMINUM CHANNEL CAPS

- Dedicated aluminum caps seamlessly close off channels not in use



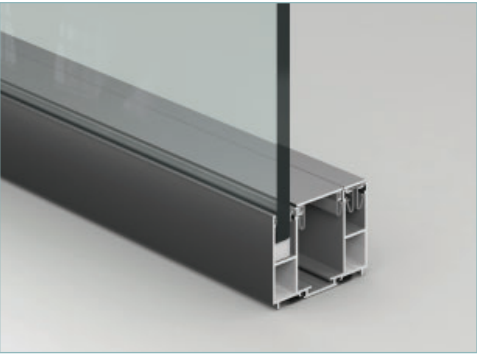
CENTER GLAZED

- Shown with 1.5"-high bottom rail
- Outer to center channel caps with seals



CENTER GLAZED

- Shown with 2.5"-high bottom rail
- Outer to center channel caps with seals



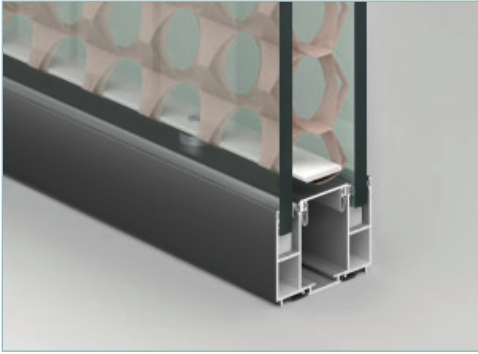
OFFSET GLAZED

- Shown with 2.5"-high bottom rail
- Outer channel and center channel caps



DOUBLE GLAZED

- Shown with 2.5"-high bottom rail
- Center channel cap

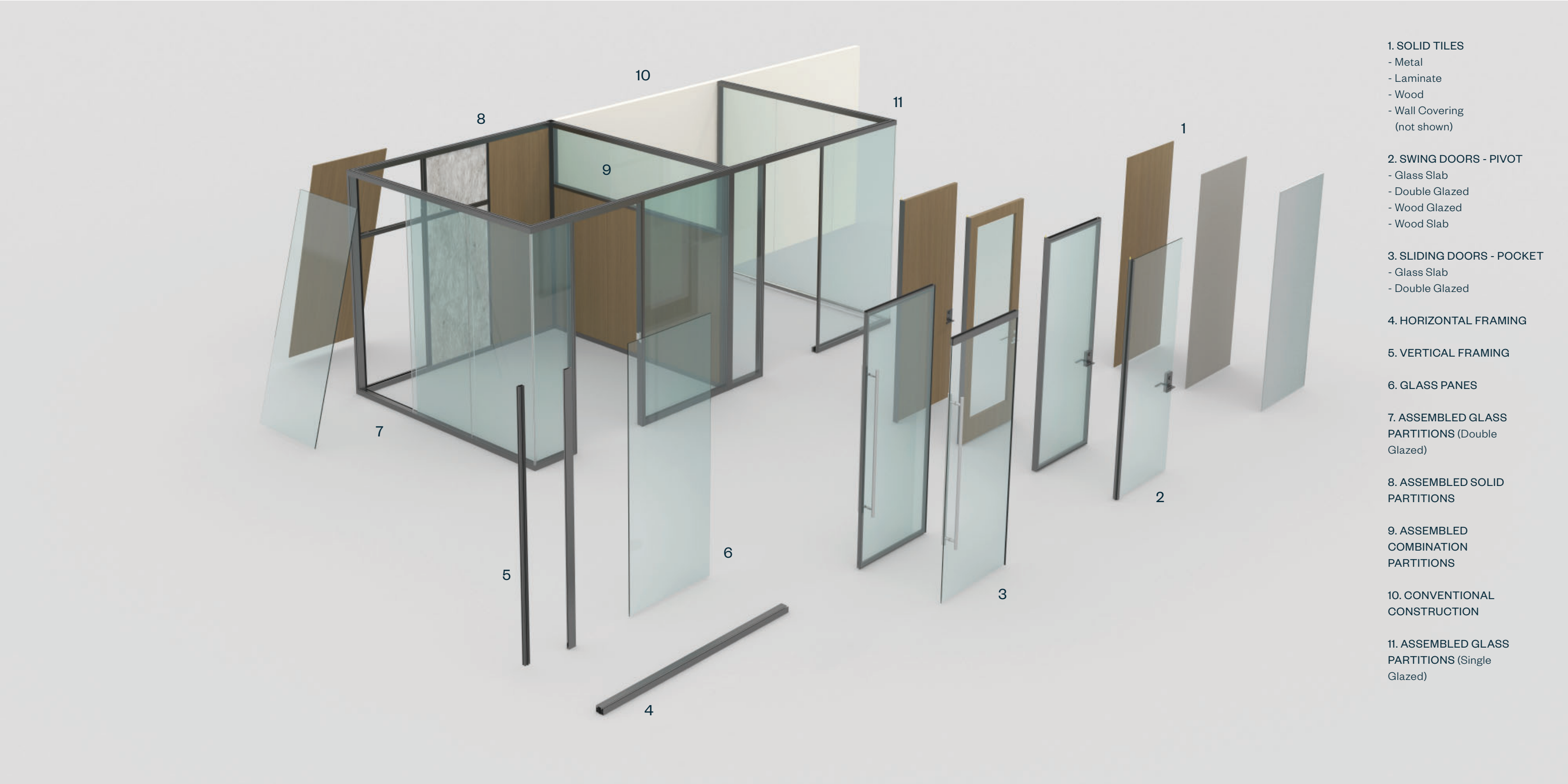


DOUBLE GLAZED WITH CUSTOM INSERT

- Shown with 2.5"-high bottom rail
- Custom decorative insert used in center channel

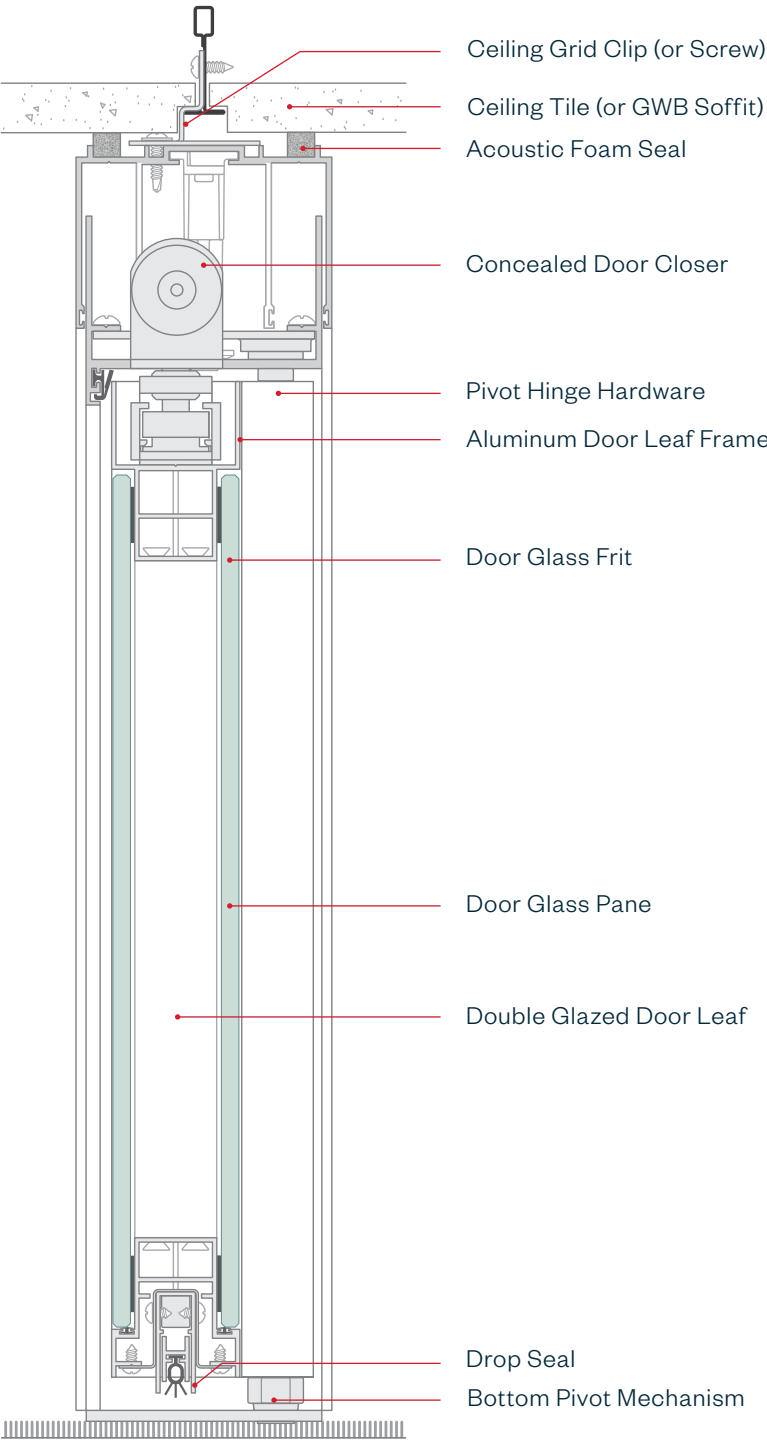


# Product Logic: Doors + Partitions





# Entrance Systems: Swing Doors

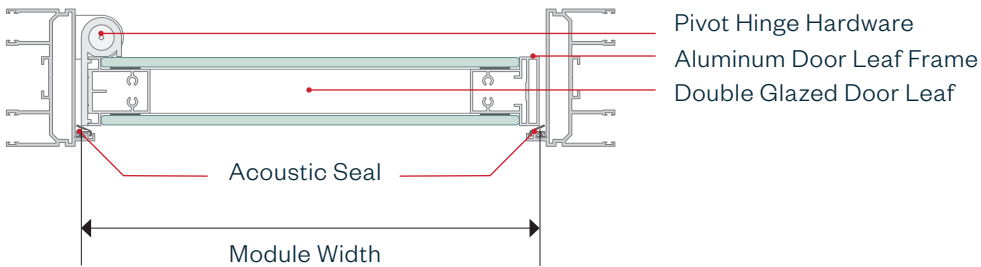


FEATURES

- Swing doors are available with pivot hinge only
- Double glazed, wood glazed, glass slab, and wood slab door leaf options available
- Multiple door leaf types to meet workspace privacy requirements
- Full-height doors up to 10' (3,048 mm)
- Concealed door closers and magnetic locks available
- Double glazed, wood glazed, and wood slab doors come with standard automatic drop seal
- Double glazed, wood glazed, and wood slab options are 1 3/4" (44 mm) thick, accommodating industry standard hardware
- Glass slab doors are 3/8" (10mm) thick, accommodating most industry standard hardware

SIZES | DIMENSIONS

- Leaf Width: 36" (914 mm), 42" (1,067 mm) and 48" (1,219 mm) standard
- Frame Height: Up to 120" (3,048 mm) for full height door
- Glass Thickness (Glass Slab): 3/8" (10 mm) tempered glass
- Glass Thickness (Double Glazed): 3/16" (5 mm) tempered glass
- Glass Thickness (Wood Glazed): 1/4"-3/8" (6 mm-10 mm) tempered or laminated glass





# Entrance Systems: Swing Door Leaves + Frames

DOOR LEAF OPTIONS



GLASS SLAB WITH PIVOT HINGE



DOUBLE GLAZED WITH PIVOT HINGE



WOOD GLAZED WITH PIVOT HINGE



WOOD SLAB WITH PIVOT HINGE

DOOR LEAF PLINTH DETAILS



AUTOMATIC DROP SEAL

- Standard on double glazed, wood slab, and wood glazed pivot doors, providing a light seal and enhanced acoustical privacy

DOUBLE GLAZED GLASS DETAIL



GLASS FRIT

- Colored door glass frit masks door assembly
- Matches door frame trim finish



# Entrance Systems: Swing Door Hardware

LOCKS



GLASS SLAB CYLINDRICAL LOCK

- Allows cylindrical lever lockset functionality on glass slab doors



GLASS SLAB MORTISE LOCK

- Allows mortise lever lockset functionality on glass slab doors
- Available in two lever styles



CYLINDRICAL

- Non-handed
- Cost effective
- Wide range of options, functions, and lever styles available
- Patch housing only required on double glazed doors



MORTISE

- Wide range of options, functions, and lever styles available
- Greater flexibility
- Patch housing only required on double glazed doors



RECTILINEAR D-PULL

- Clean rectilinear design
- 12” (305 mm) on center
- Available on wood slab, wood glazed, and glass slab doors



TUBULAR D-PULL

- 1” (25 mm) diameter pull
- 12” (305 mm) on center
- 16” (406 mm) overall length
- Available on all door types



ARCHITECTURAL D-PULL

- Longer pulls in various lengths 18”–60” (457 mm – 1,524 mm)
- Diameter of 1” (25 mm)
- Available on all door types

	DOUBLE GLAZED		WOOD SLAB + WOOD GLAZED		GLASS SLAB	
	PIVOT HINGE					
MANUFACTURER	CYLINDRICAL	MORTISE	CYLINDRICAL	MORTISE	CYLINDRICAL	MORTISE
Best	●	●	●	●	●	
Corbin Russwin	●	●	●	●	●	
Sargent	●	●	●	●	●	
Schlage	●	●	●	●	●	
Yale	●	●	●	●	●	
FSB		●	●	●		●



# Entrance Systems: Swing Door Details

HARDWARE ACCESSORIES



CONCEALED CLOSER ON DOUBLE GLAZED DOOR



CONCEALED CLOSER ON GLASS SLAB DOOR



CONCEALED MAGNETIC LOCK



FLOOR MOUNTED DOORSTOP



ROLLER CATCH

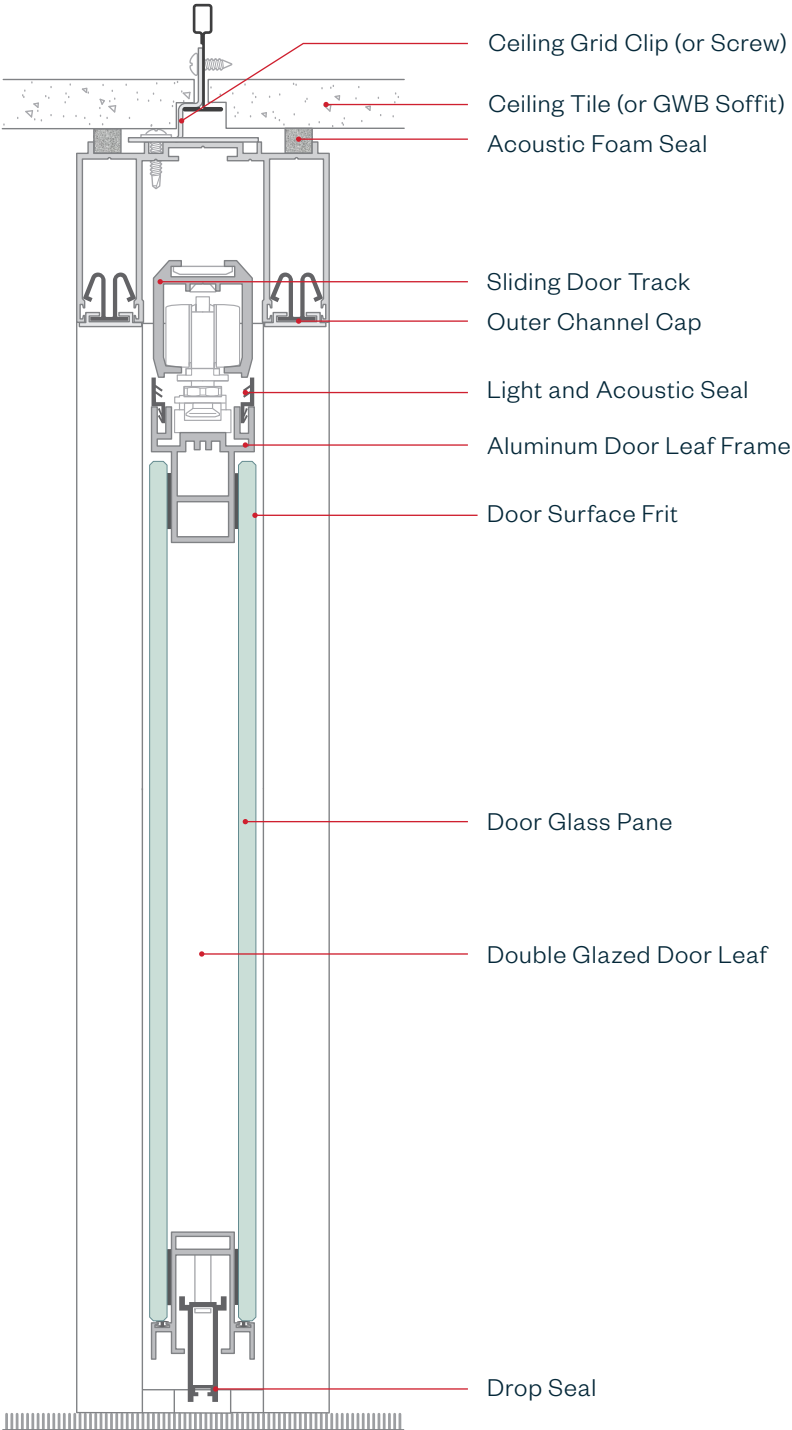
- Roller catch is in header of glass slab doors and jamb of wood and double glazed doors
- Closet doors
- Non-locking doors with pulls or dummy locks



ELECTRIC STRIKE

- Requires field coordination of electrical hook-up
- Field selectable voltage and function

# Entrance Systems: Sliding Doors

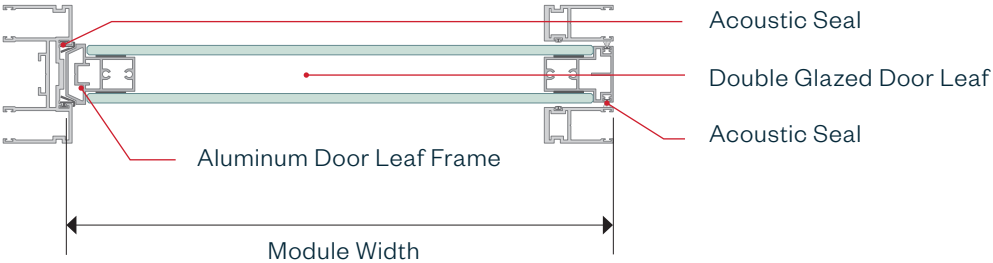


**FEATURES**

- All sliding doors are designed as pocket doors
- Soft close standard for improved sliding door operation
- Single action egress hardware to support specific codes
- Double glazed and glass slab door leaf options available
- Full-height doors up to 10' (3,048 mm)
- Double glazed doors come with standard adjustable drop seal
- Double glazed options are 1 1/2" (38 mm) thick
- Glass slab doors are 3/8" (10 mm) thick and can be prepped to accommodate industry standard locking hardware

**SIZES | DIMENSIONS**

- Leaf Width: 42" (1,067 mm) and 48" (1,219 mm) standard
- Frame Height: Up to 120" (3,048 mm) for full-height door
- Glass Thickness (Glass Slab): 3/8" (10 mm) tempered glass
- Glass Thickness (Double Glazed): 3/16" (5 mm) tempered glass





# Entrance Systems: Sliding Door Leaves + Frames

DOOR LEAF OPTIONS



GLASS SLAB WITH SOFT CLOSE

- Soft close standard on all glass slab sliding doors



DOUBLE GLAZED WITH SOFT CLOSE

- Soft close standard on all double glazed sliding doors

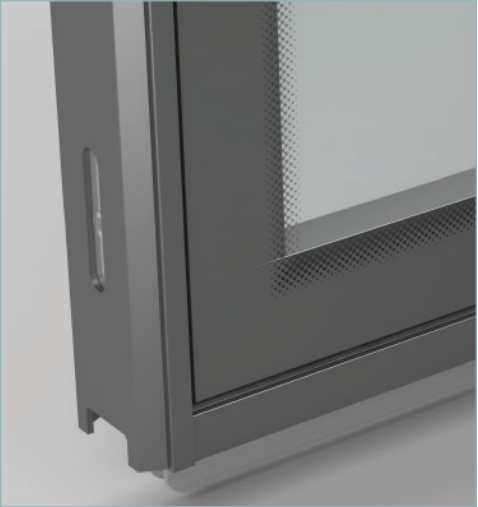
DOOR LEAF PLINTH DETAILS



ADJUSTABLE DROP SEAL

- Standard on double glazed sliding doors, providing a light seal and enhanced acoustic privacy

DOUBLE GLAZED GLASS DETAIL



GLASS FRIT

- Colored door glass frit masks door assembly
- Matches door frame trim finish

# Entrance Systems: Sliding Door Hardware

LOCKS + PULLS



DEADBOLT WITH PULL ON GLASS SLAB DOOR

- Mortise lock capability for glass slab doors with D-pull



SINGLE ACTION EGRESS (SAE) LOCK ON GLASS SLAB DOOR

- Supports specific accessibility requirements
- Available on single doors only
- Mortise lock functionality



DEADBOLT WITH PULL ON DOUBLE GLAZED DOOR

- Mortise lock capability for double glazed doors with D-pull



SINGLE ACTION EGRESS (SAE) LOCK ON DOUBLE GLAZED DOOR

- Supports specific accessibility requirements
- Available on single doors only
- Mortise lock functionality



RECTILINEAR D-PULL

- Clean rectilinear design
- 12" (305 mm) on center
- Available on glass slab sliding door



TUBULAR D-PULL

- 1" (25 mm) diameter pull
- 12" (305 mm) on center
- 16" (406 mm) overall length



ARCHITECTURAL D-PULL

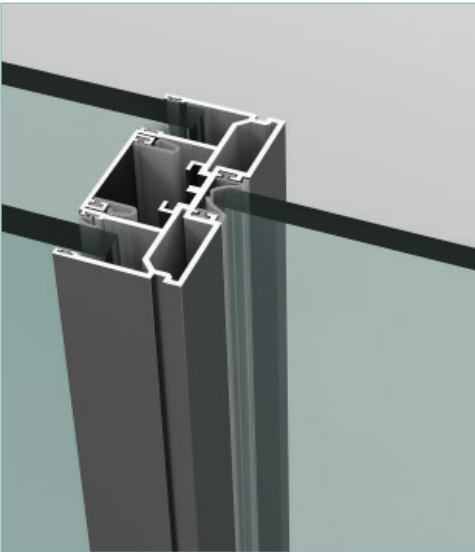
- Longer pulls in various lengths 18" (457 mm) to 60" (1,524 mm)
- Diameter of 1" (25 mm)

	DOUBLE GLAZED	GLASS SLAB
	SLIDING	
Deadbolt with Pull	●	●
Single Action Egress	●	●
Rectilinear D-Pull		●
Tubular Pull	●	●
Architectural Pull	●	●

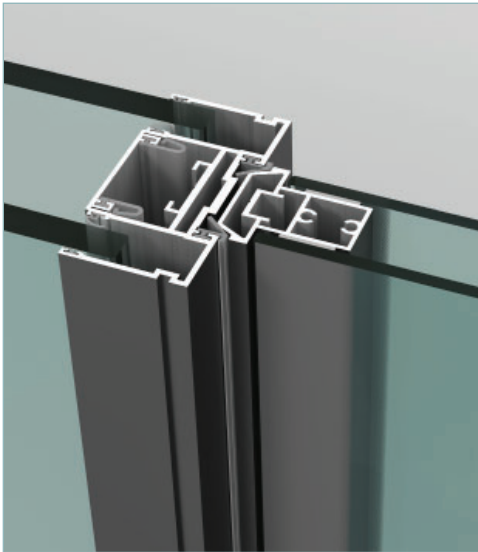


# Entrance Systems: Sliding Door Details

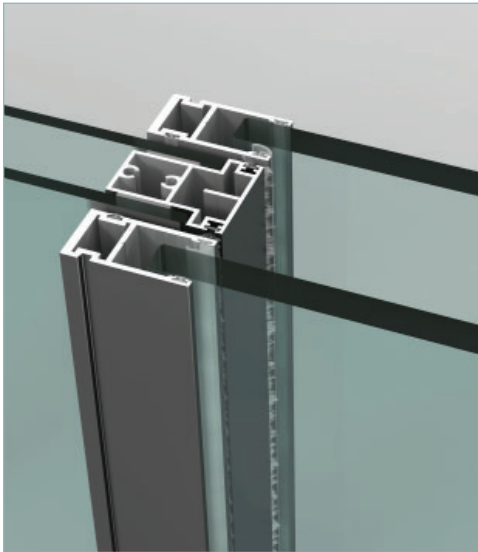
DOOR SEALS



GLASS SLAB AT STRIKE JAMB VERTICAL



DOUBLE GLAZED AT STRIKE JAMB VERTICAL



DOUBLE GLAZED AT POCKET VERTICAL

SLIDING TRACK COMPONENTS



SOFT CLOSE HARDWARE



SOFT CLOSE DETAIL ON DOUBLE GLAZED



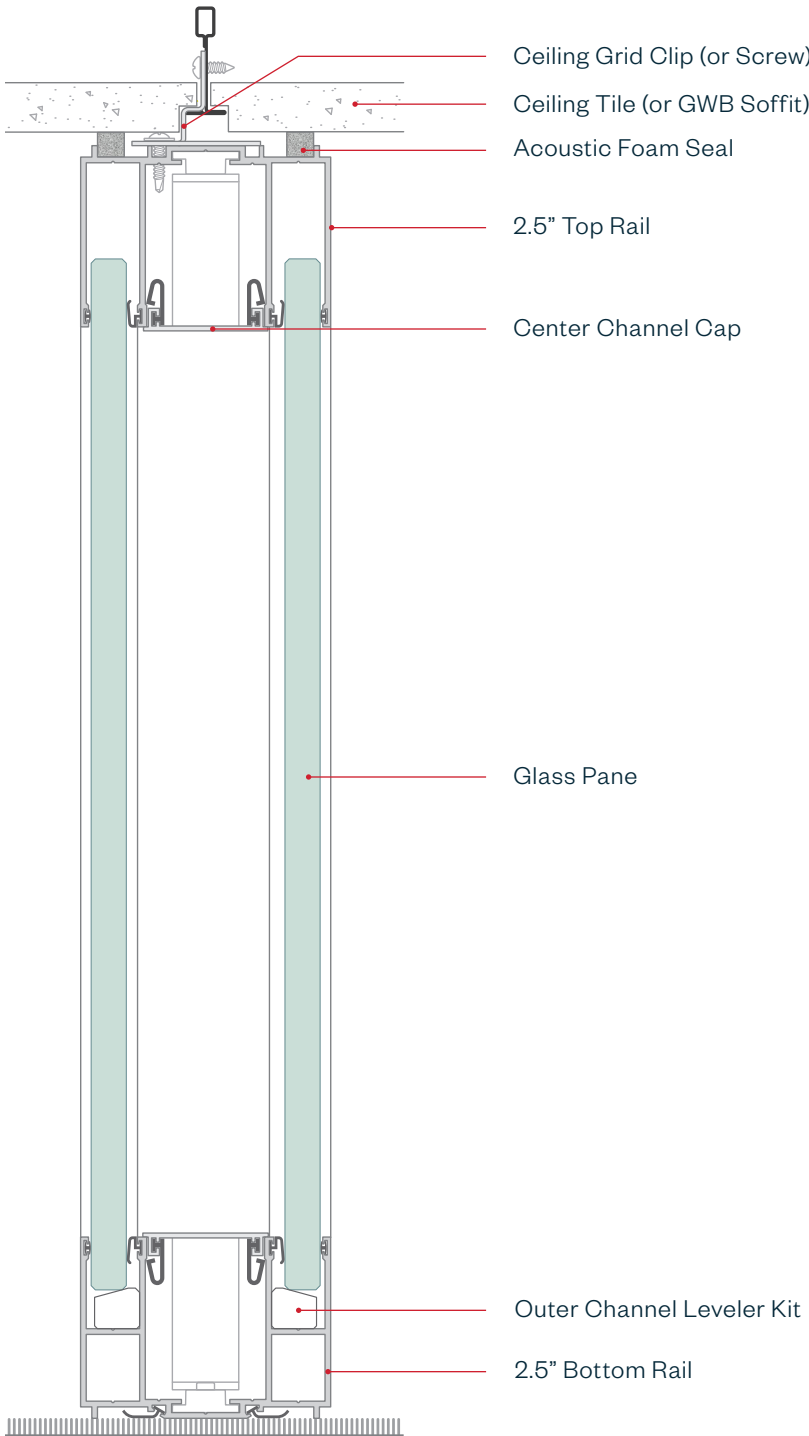
SOFT CLOSE DETAIL ON GLASS SLAB

TECHNICAL GUIDE

# Glass Partitions

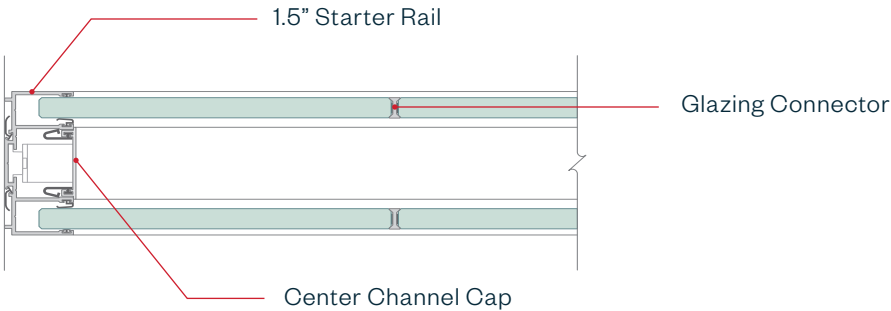


GLASS – DOUBLE GLAZED



- FEATURES**
- Three-channel system provides great design flexibility for a variety of aesthetic preferences and acoustical requirements—with three glass configuration options: double glazing, offset glazing, and center glazing
  - Acoustic seals create an acoustic envelope that aids in reducing sound transmission
  - Dedicated aluminum rail caps seamlessly close off the channels not housing glass panes
  - Powder-coated aluminum that can be easily touched up in the field
  - Framing out and assembled on-site to align seamlessly with all unique site conditions
  - Glass pane thickness of 3/8" (10 mm) or 1/2" (12 mm) depending on acoustic requirements
  - Butt-joined glazing for maximum transparency
  - Glass may be locally sourced or ordered through Haworth with Trivati product
  - Integrated adjustable leveler kits allow glass to be plumbed with ease

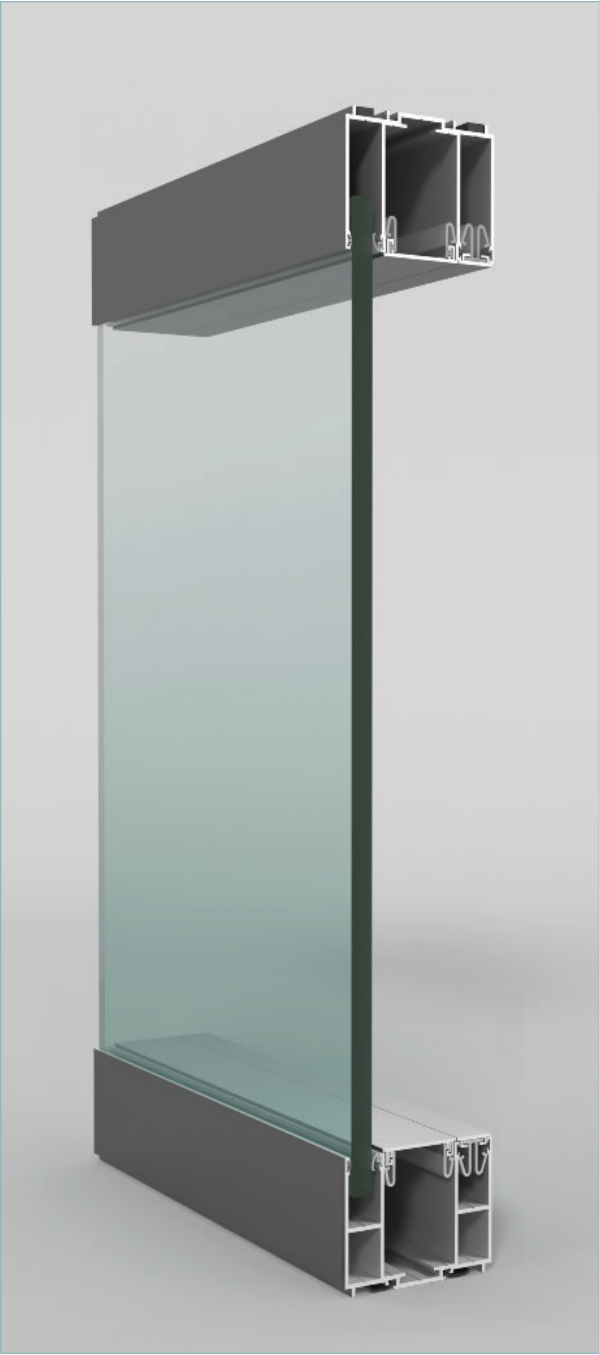
- SIZES | DIMENSIONS**
- Top Rail Height: 2 1/2" (64 mm)
  - Bottom Rail Height: 2 1/2" (64 mm) or 1 1/2" (38 mm)
  - Width: Glass module as required to span overall dimension
  - Height: Up to 144" (3,658 mm)
  - Glass Thickness: 3/8" (10 mm) or 1/2" (12 mm), tempered or laminated glass
  - Vertical Adjustment: +/- 1/2" (12 mm)
  - Horizontal Alignment: Manufactured to fit the base building; minimum 12" (305 mm)



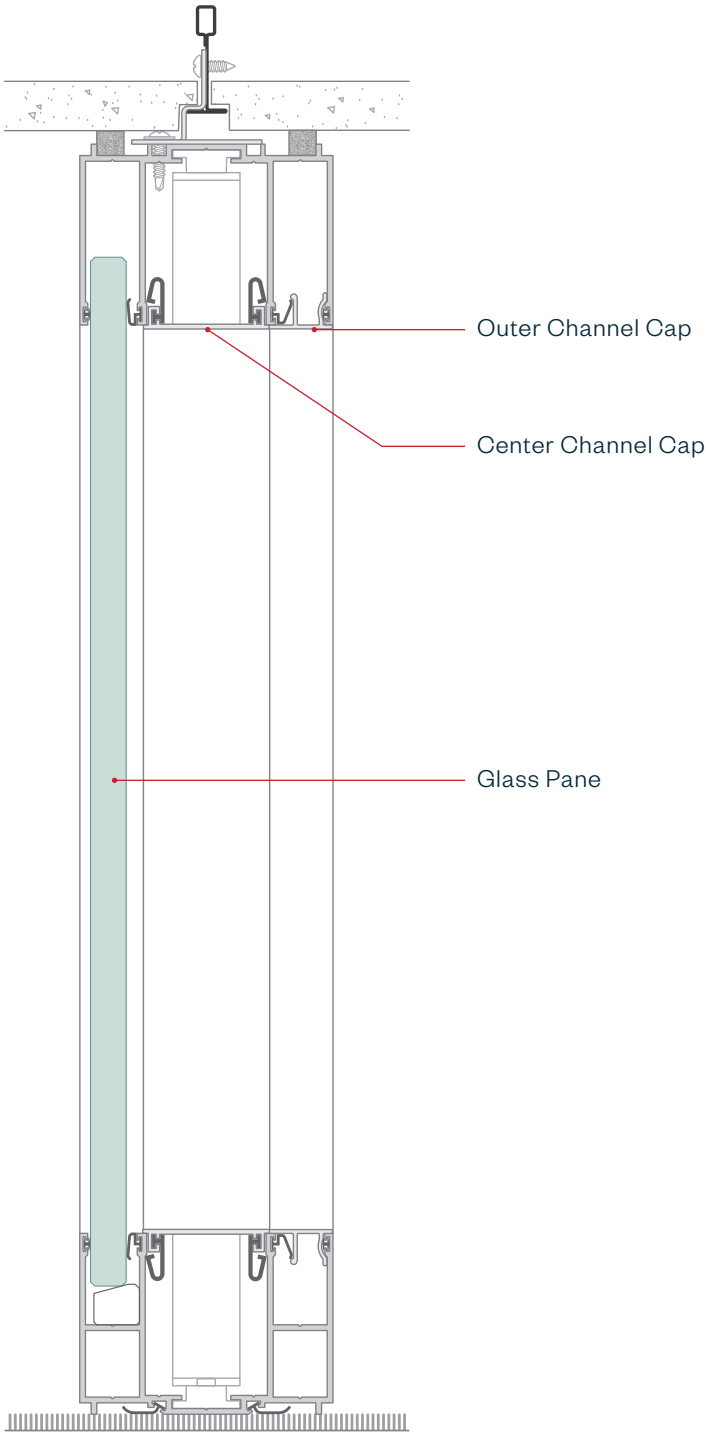


# Glass Partitions: Configurations

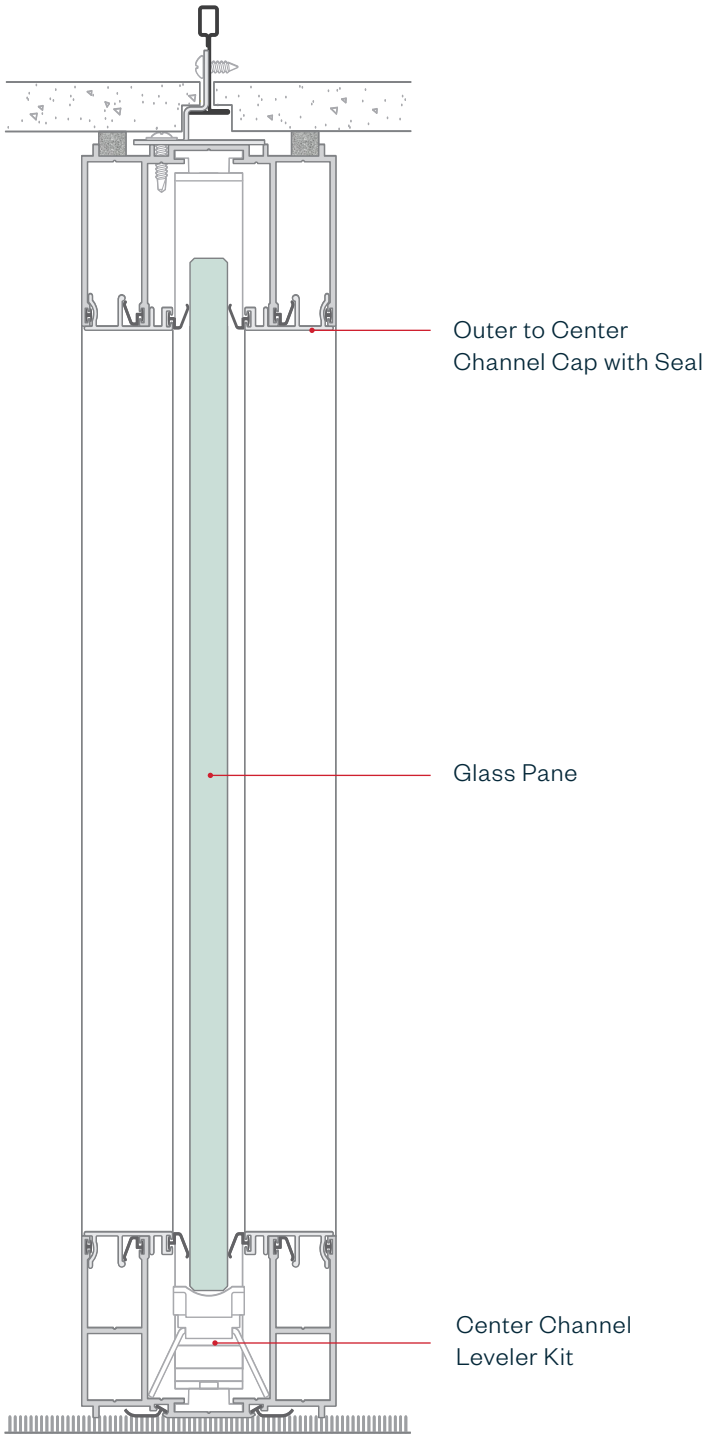
GLASS PANE CONFIGURATIONS



GLASS – OFFSET GLAZED

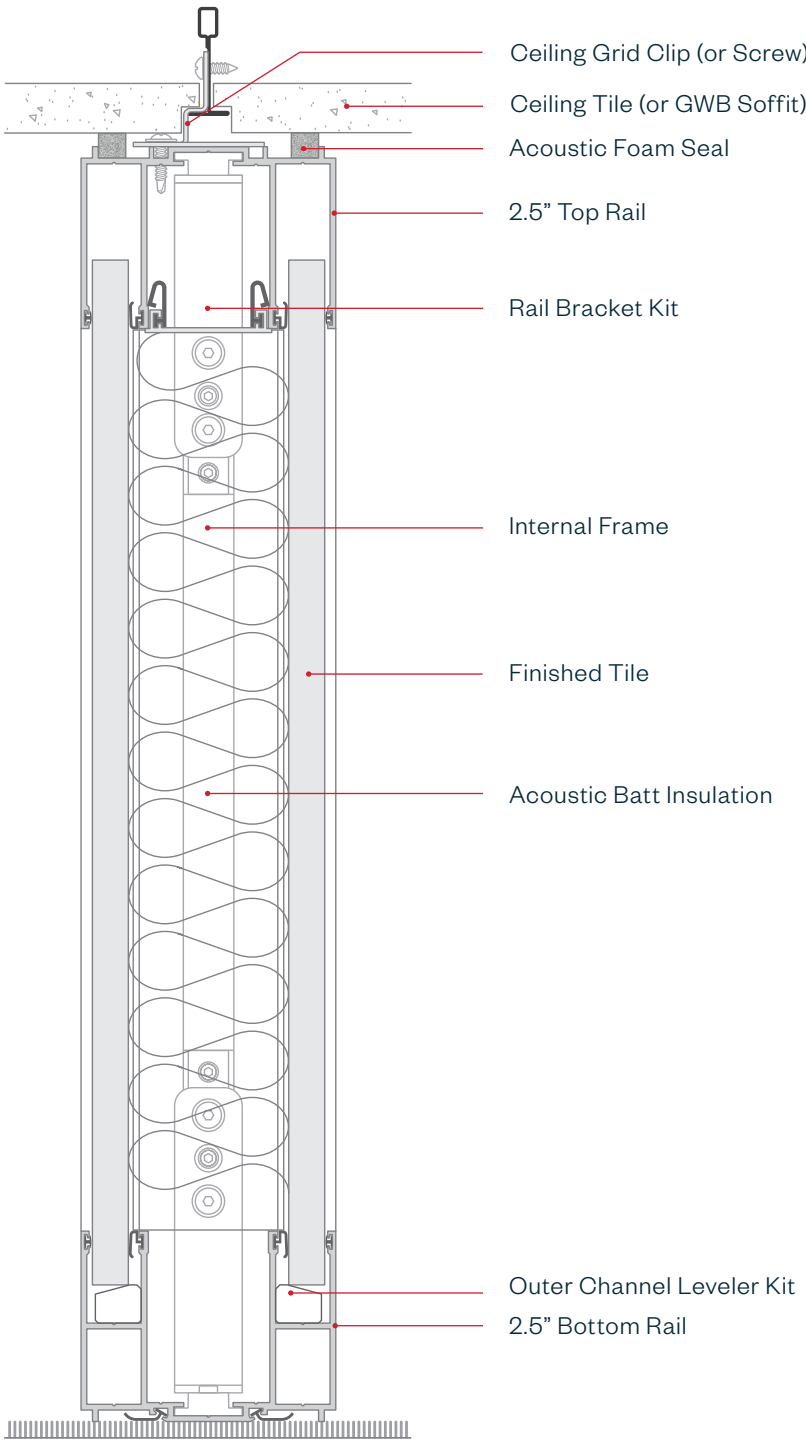


GLASS – CENTER GLAZED



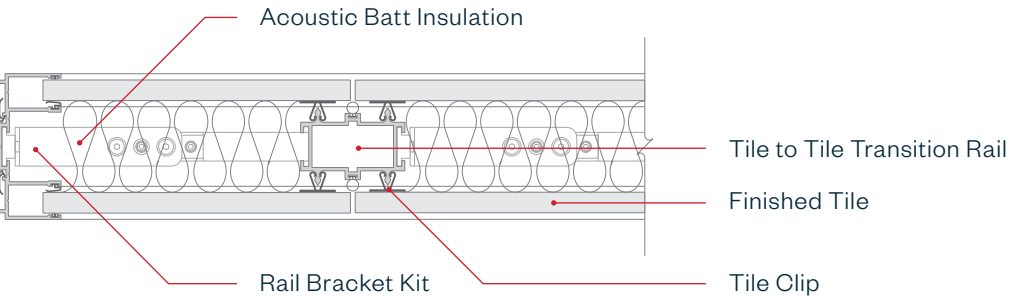
TECHNICAL GUIDE

Solid Partitions



- FEATURES
- Acoustic seals create an acoustic envelope that reduces sound transmission
  - Designed with the same core framing components as glass partitions for seamless integration of details
  - Monolithic or segmented tiling with a variety of substrates and finishes can create unique patterns or designs on either side of the partition
  - Horizontal and vertical tile options
  - Tile to tile transition rails with slots are available to separate multiple tile configurations.
  - Transition rails with notches accommodate mounting of furniture and accessories by Haworth or other manufacturers
  - Electrical and data can be routed vertically from ceiling to the floor
  - Assembled on-site to align seamlessly with all unique site conditions
  - High pressure laminate, wood, metal, and wall covering options
  - Integrated adjustable leveler kits allow tiles to be plumbed with ease

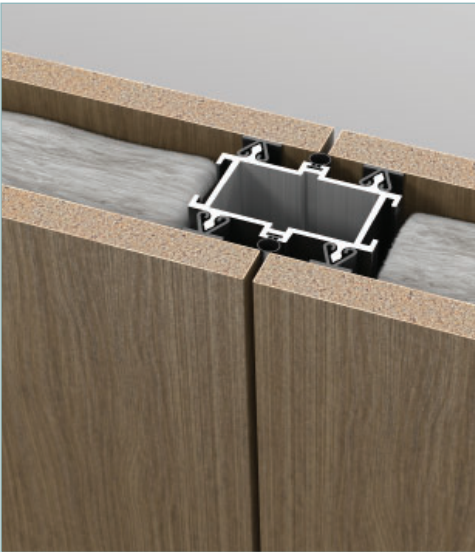
- SIZES | DIMENSIONS
- Tile Min: 8" (203 mm) x 8" (203 mm)
  - Tile Max: 4' (1,219 mm) x 10' (3,048 mm)
  - Tile Thickness: 9/16" (14 mm)
  - Width: Tile module as required to span overall dimension
  - Height: Up to 120" (3,048 mm) with a single tile, 144" (3,657mm) with multiple tiles
  - Vertical Adjustment: +/- 1/2" (12 mm)
  - Horizontal Alignment: 1/16" (2 mm) width increments to align with base building



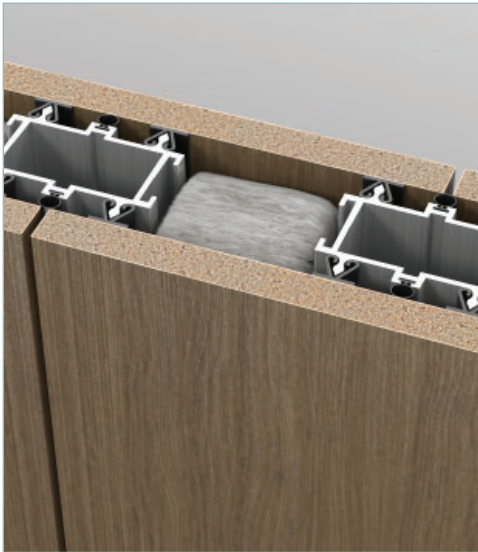


# Solid Partitions: Details

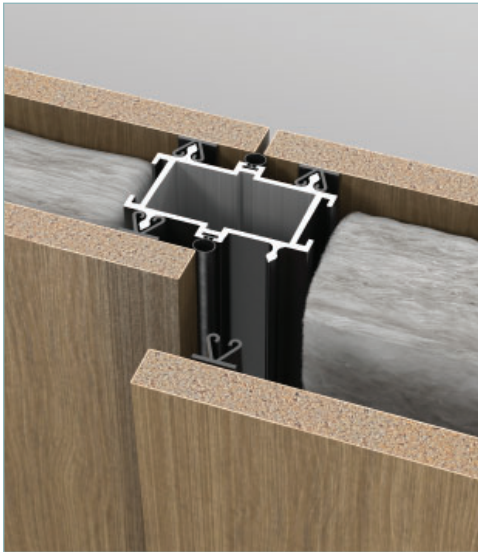
TRANSITIONS AND ATTACHMENTS



BACK TO BACK REVEAL



OFF MODULE REVEALS



BULB SEAL AND TILE CLIP

BOTTOM RAIL COMPONENTS



SEALS, LEVELERS, AND INSULATION

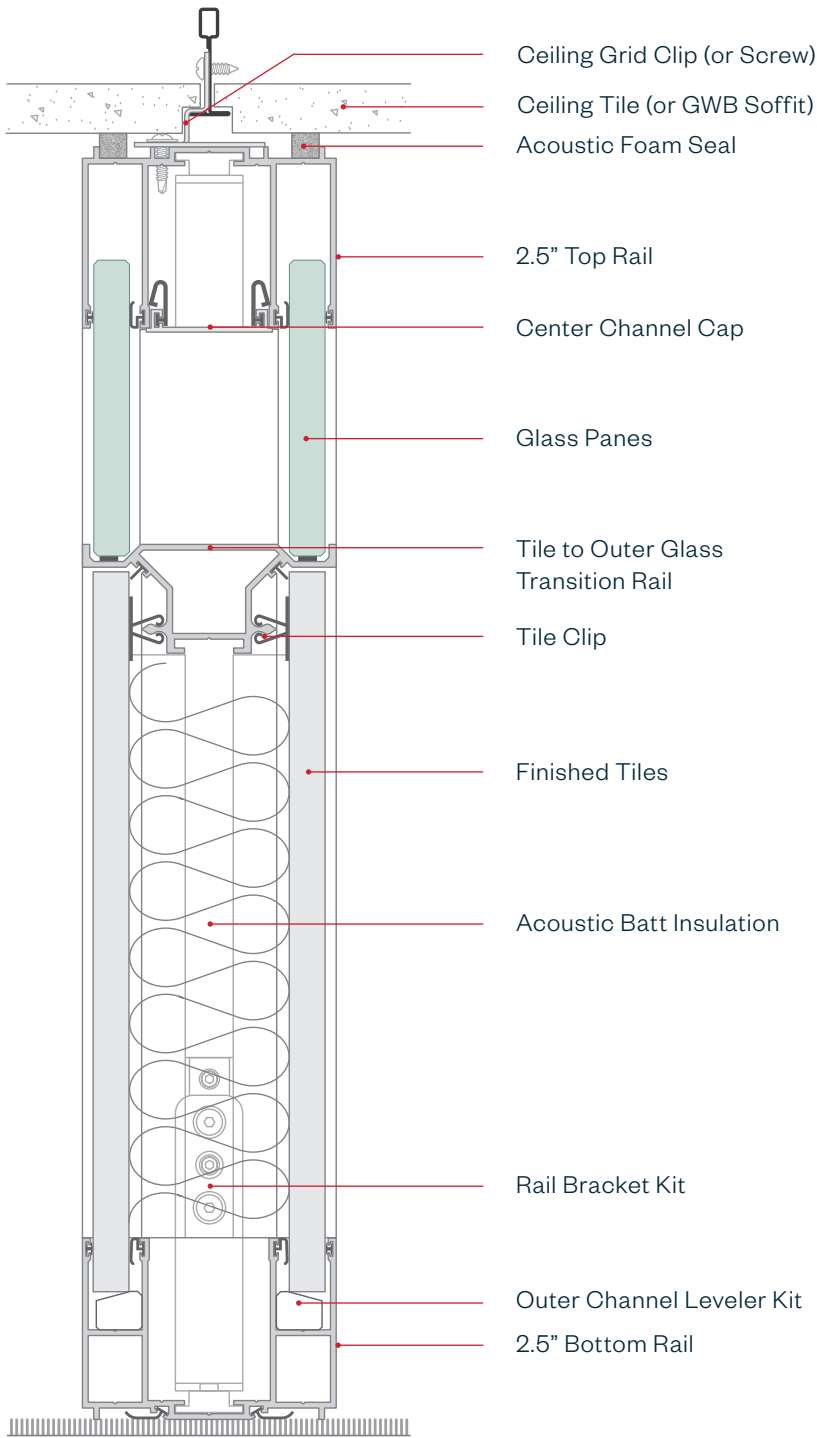


VERTICAL TILES



HORIZONTAL TILES

# Combination Partitions

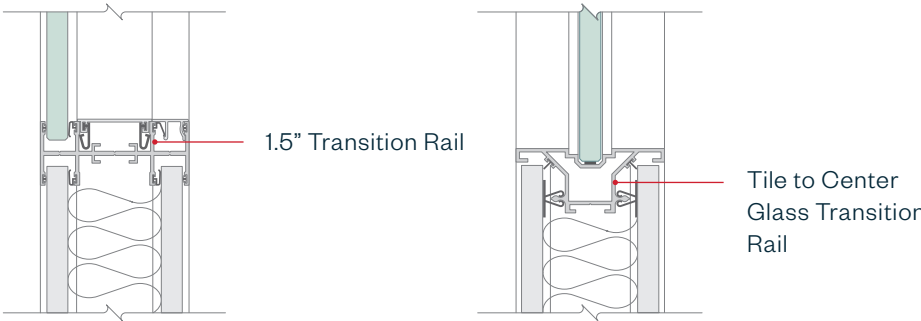


**FEATURES**

- Combines the aesthetic of glass and solid applications
- Glass pane thickness of 3/8" (10 mm) or 1/2" (12 mm) depending on acoustic requirements
- Glass transition may be single glazed or double glazed
- Monolithic or segmented tiling with ability to mix up on either side of the panel and select from a variety of finishes and substrates
- Assembled on-site to align seamlessly with all unique site conditions
- High pressure laminate, wood, metal, and wall covering tile options
- Aluminum transition rails can be used both vertically and horizontally

**SIZES | DIMENSIONS**

- Tile Min: 8" (203 mm) x 8" (203 mm)
- Tile Max: 4' (1,219 mm) x 10' (3,048 mm)
- Tile Thickness: 9/16" (14 mm)
- Glass Thickness: 3/8" (10 mm) or 1/2" (12 mm) tempered or laminated glass
- Height: Up to 144" (3,658 mm)
- Vertical Adjustment: +/- 1/2" (12 mm)
- Horizontal Alignment: 1/16" (2 mm) width increments to align with base building





# Combination Partitions: Details

SOLID TO GLASS TRANSITIONS



1.5"-HIGH TRANSITION



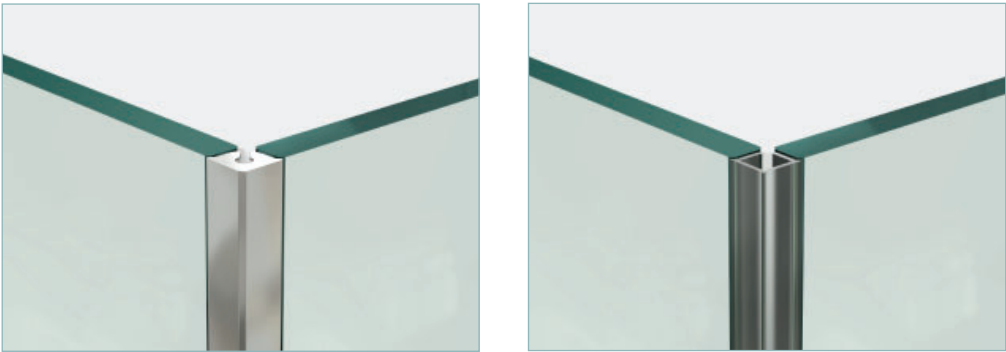
DOUBLE GLAZED TO SOLID TRANSITION



CENTER GLAZED TO SOLID TRANSITION

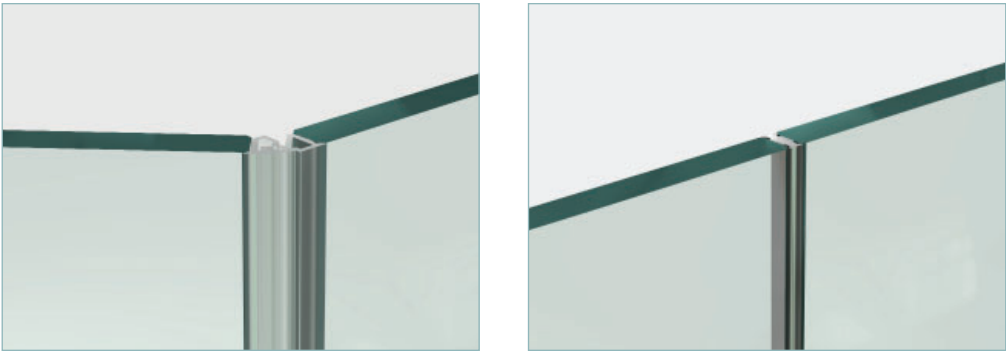
# Transitions: 2-Way + Inline Glazing

ARCHITECTURAL OPTIONS



2-WAY 90° GLAZING CONNECTORS

- Metal option in bright or painted finish
- Plastic option



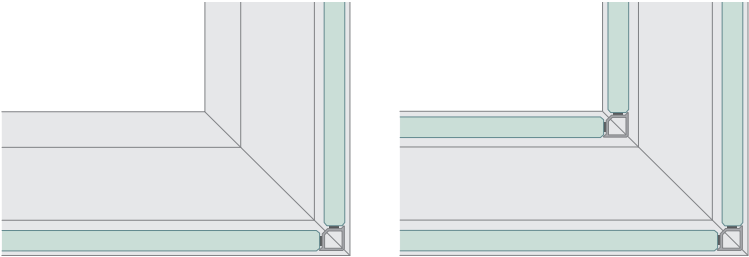
VARIABLE ANGLE CONNECTOR

- Accommodates angles from 90.5° to 180°
- Metal option in bright finish
- Plastic option

INLINE CONNECTOR

- Tape option
- Plastic option

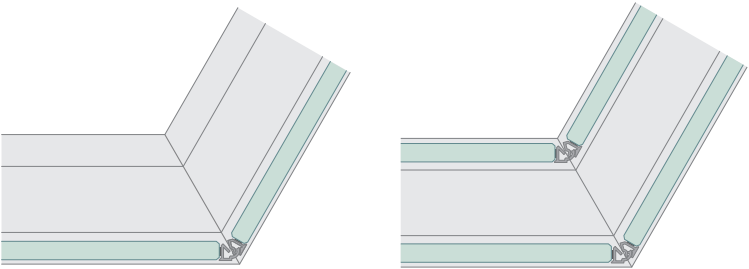
2-WAY 90° GLAZING CONNECTORS



OFFSET GLAZED

DOUBLE GLAZED

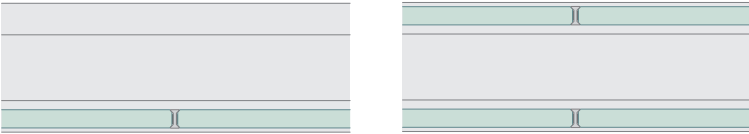
2-WAY VARIABLE ANGLE GLAZING CONNECTORS



OFFSET GLAZED

DOUBLE GLAZED

INLINE CONNECTORS



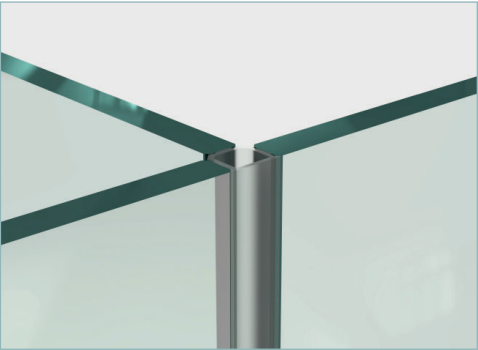
OFFSET GLAZED

DOUBLE GLAZED



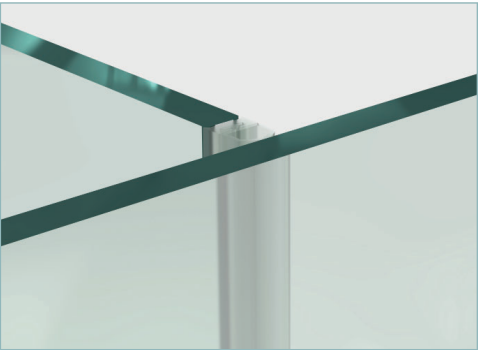
# Transitions: 3-Way Glazing

ARCHITECTURAL OPTIONS



3-WAY 90° CONNECTOR

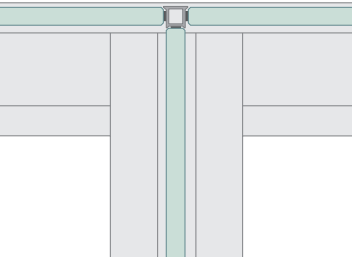
- Extends visual transparency
- Supports multiple glass configurations on Trivati returns
- Metal option in painted finish
- Plastic option



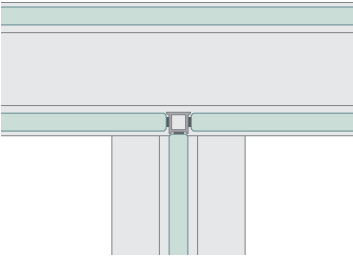
BULB SEAL

- Off-modular interface with glass front
- Supports multiple Trivati return configurations
- Provides an acoustic seal between glass panes
- Available in plastic only

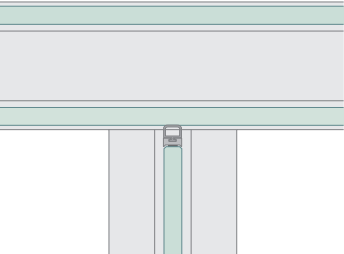
3-WAY 90° GLAZING CONNECTORS



CENTER GLAZED TO  
OFFSET GLAZED



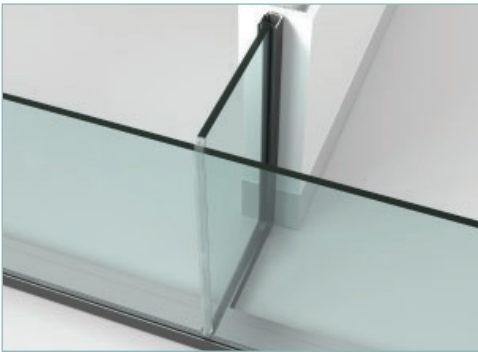
CENTER GLAZED TO  
DOUBLE GLAZED



CENTER GLAZED TO  
DOUBLE GLAZED

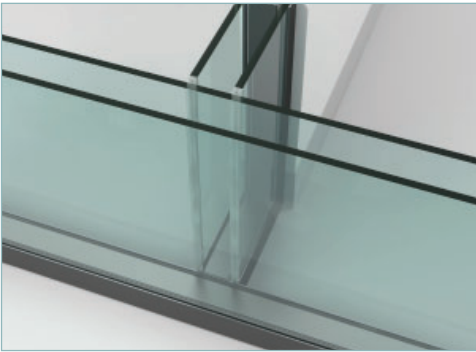
# Transitions: Fly-By Glazing

ARCHITECTURAL OPTIONS



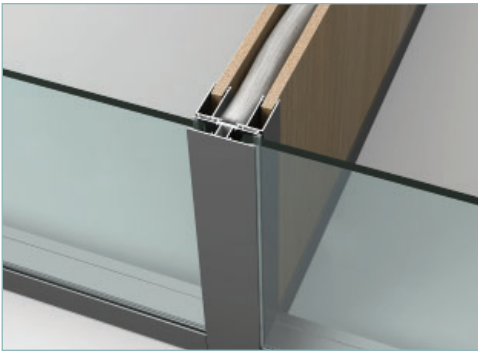
SINGLE GLAZED TO OFFSET GLAZED

- Bulb seal interface with glass front
- Trivati one channel



DOUBLE GLAZED TO DOUBLE GLAZED

- Bulb seal interface with glass front
- Trivati three channel



SOLID TO OFFSET GLAZED

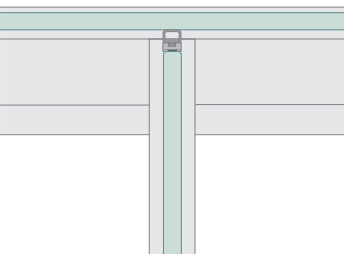
- Solid run interfaces glass front with 3-way 90° one channel transition rail
- Exposed vertical in offset glazed applications



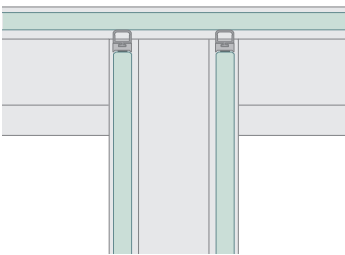
SOLID TO DOUBLE GLAZED

- Solid run interfaces glass front with 3-way 90° one channel transition rail
- Vertical not exposed in double glazed applications

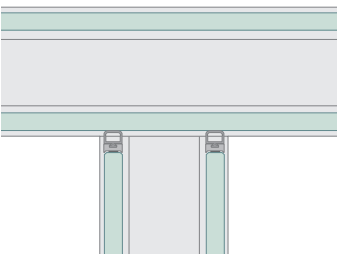
FLY-BY: 3-WAY GLAZING CONNECTOR



SINGLE GLAZED (ONE CHANNEL) TO OFFSET GLAZED

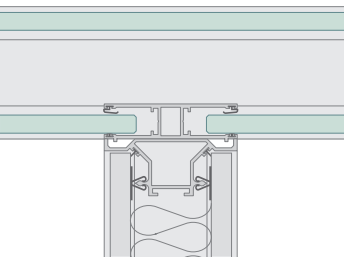


DOUBLE GLAZED TO OFFSET GLAZED

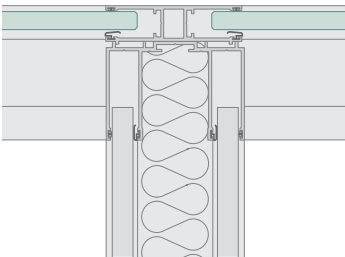


DOUBLE GLAZED TO DOUBLE GLAZED

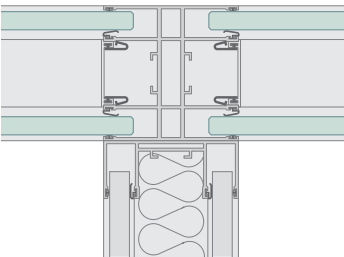
FLY-BY: 3-WAY SOLID TO GLAZED



SOLID TO DOUBLE GLAZED

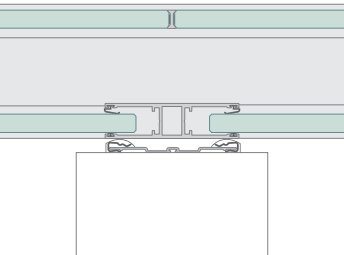


SOLID TO OFFSET GLAZED WITH VISIBLE VERTICAL

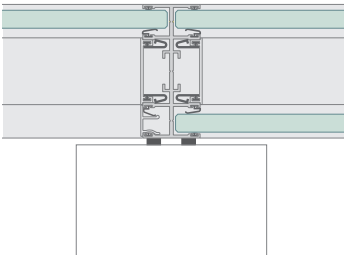


SOLID TO DOUBLE GLAZED WITH VISIBLE VERTICAL

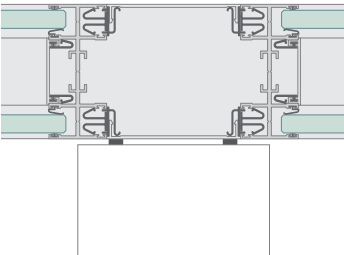
FLY-BY: CONVENTIONAL CONSTRUCTION



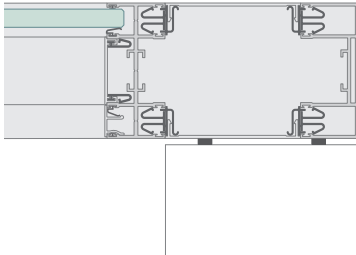
DOUBLE GLAZED



DOUBLE GLAZED TO OFFSET GLAZED WITH EXPRESSED VERTICAL



DOUBLE GLAZED TO DOUBLE GLAZED WITH VISIBLE POST



OFFSET GLAZED TO END OF RUN WITH VISIBLE POST



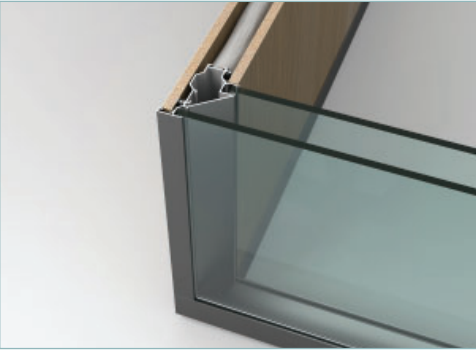
# Starters + Posts

ARCHITECTURAL OPTIONS



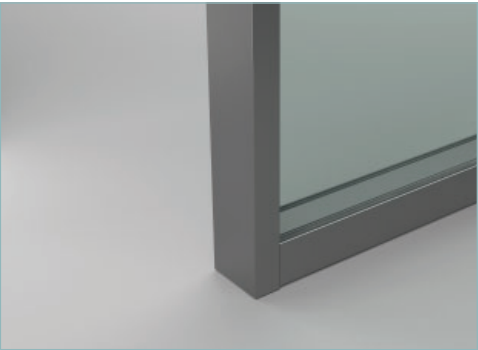
STARTER WITH REMOVABLE TRIM

- Ease of access for installation of glass panes or tiles



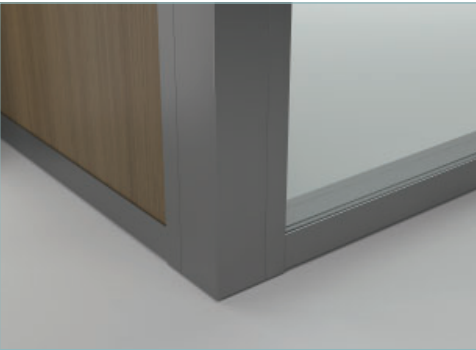
MITER POST

- 2-way transition from solid to glass or solid to solid
- Provides aesthetic with reduced vertical framing



END OF RUN RAIL

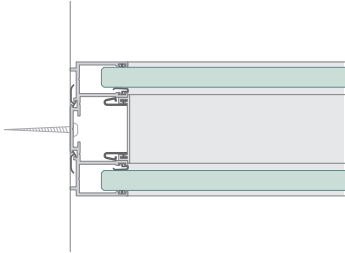
- Finishes partition runs to create dividing walls



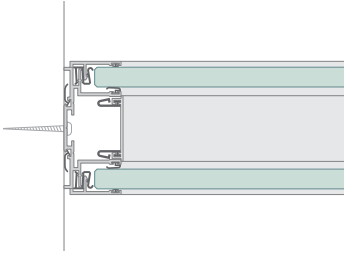
2-WAY 90° COVER

- 2-way transition from solid to solid, solid to glass, or glass to glass

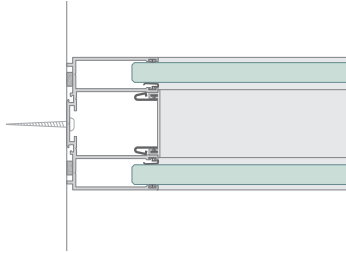
STARTERS + POSTS



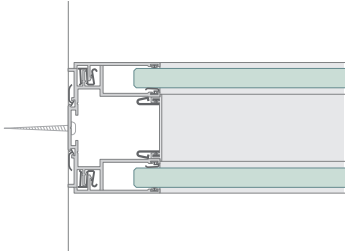
1.5" STARTER RAIL



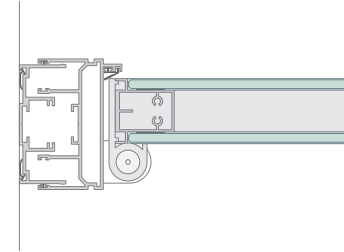
1.5" STARTER RAIL WITH REMOVABLE TRIM



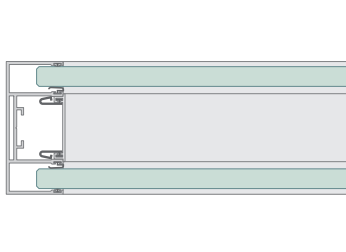
2.5" STARTER RAIL



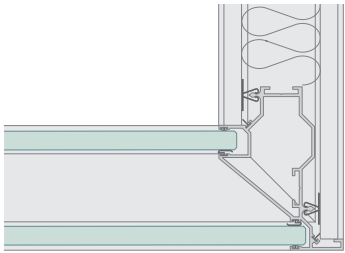
2.5" STARTER RAIL WITH REMOVABLE TRIM



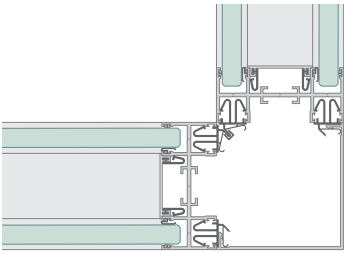
DOOR FRAME STARTER RAIL



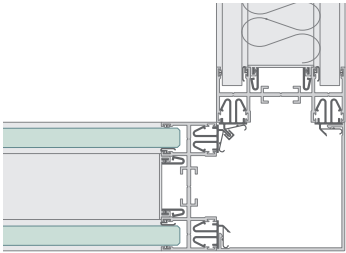
END OF RUN



2-WAY 90° TILE TO 2 CHANNEL TRANSITION - MITER POST

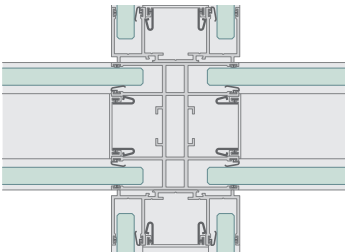


2-WAY 90° COVER KIT - GLASS TO GLASS



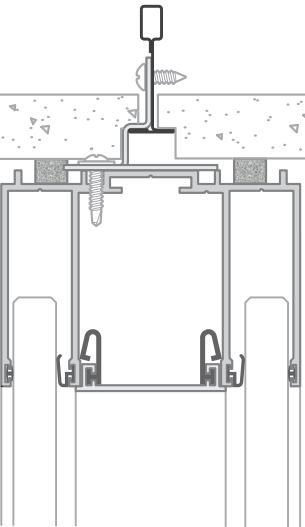
2-WAY 90° COVER KIT - SOLID TO GLASS

4-WAY TRANSITION

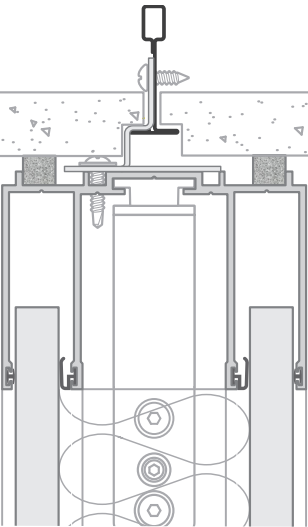


# Dimensional Logic: Rails

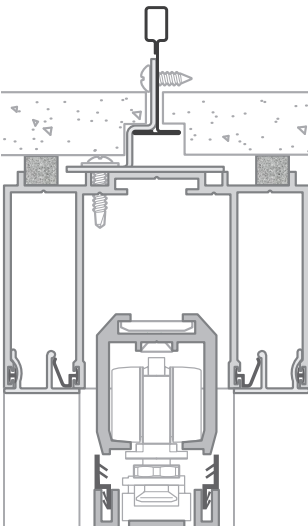
TOP RAILS



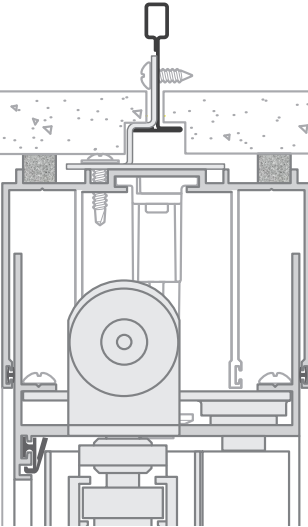
TOP RAIL – GLASS PARTITION



TOP RAIL – SOLID PARTITION

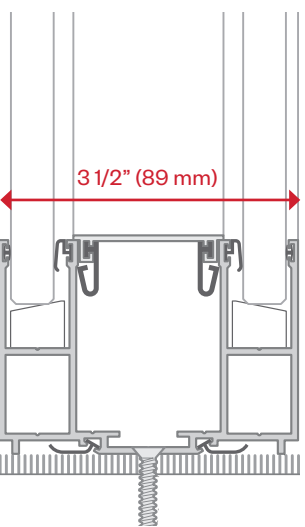


TOP RAIL – SOLID DOOR

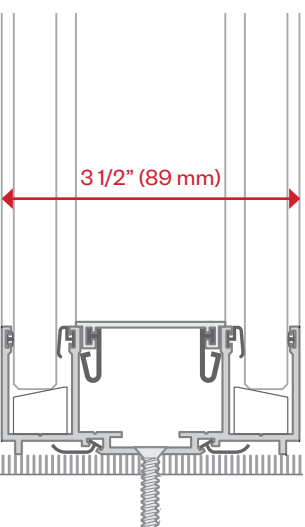


TOP RAIL – PIVOT DOOR

BOTTOM RAILS

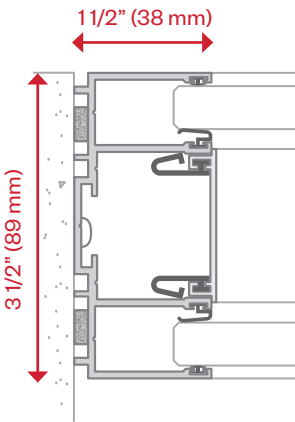


2 1/2" BOTTOM RAIL

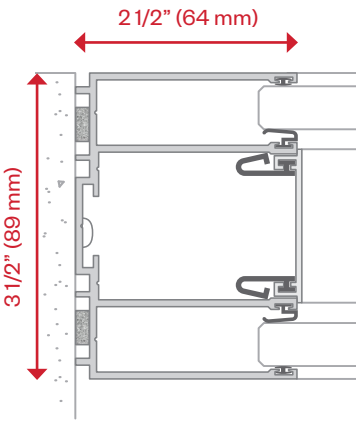


1 1/2" BOTTOM RAIL

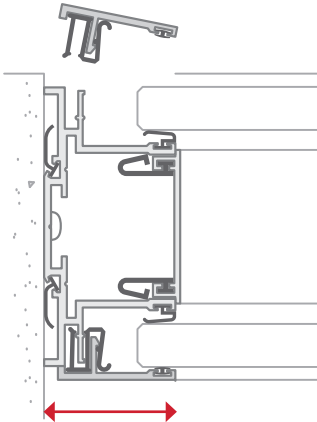
VERTICAL RAILS



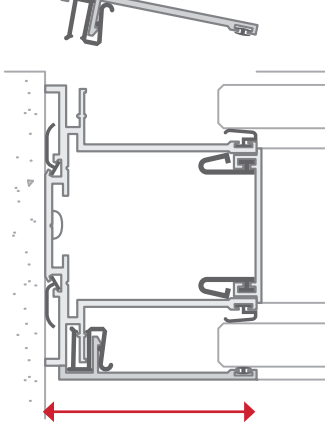
1 1/2" STARTER RAIL



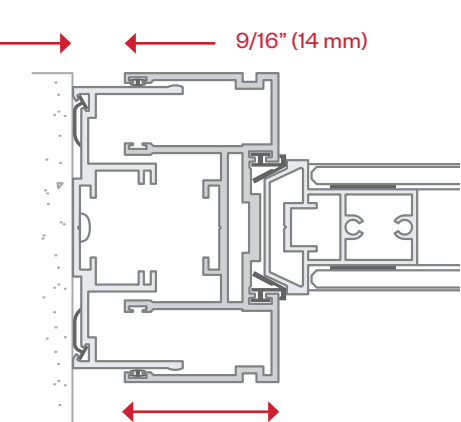
2 1/2" STARTER RAIL



1 1/2" STARTER RAIL  
WITH REMOVABLE CLAD



2 1/2" STARTER RAIL  
WITH REMOVABLE CLAD



DOOR FRAME  
STARTER RAIL







# Finishes

Trivati walls were designed to stand alone or be used within a holistic product platform. As part of Haworth's Integrated Palette™ portfolio, Trivati walls can be combined with a wide range of desking, systems, tables, and other architectural products. Consistent dimensions, connections, and finishes future-proof your interiors, ensuring that Haworth products you choose today will function and fit aesthetically with the ones you add tomorrow.

Trivati walls are available in an array of finishes. Please visit [haworth.com/surfaces](https://haworth.com/surfaces) for a complete list of materials offered.



# Frames + Tiles





FINISHES

# Frames + Tiles



