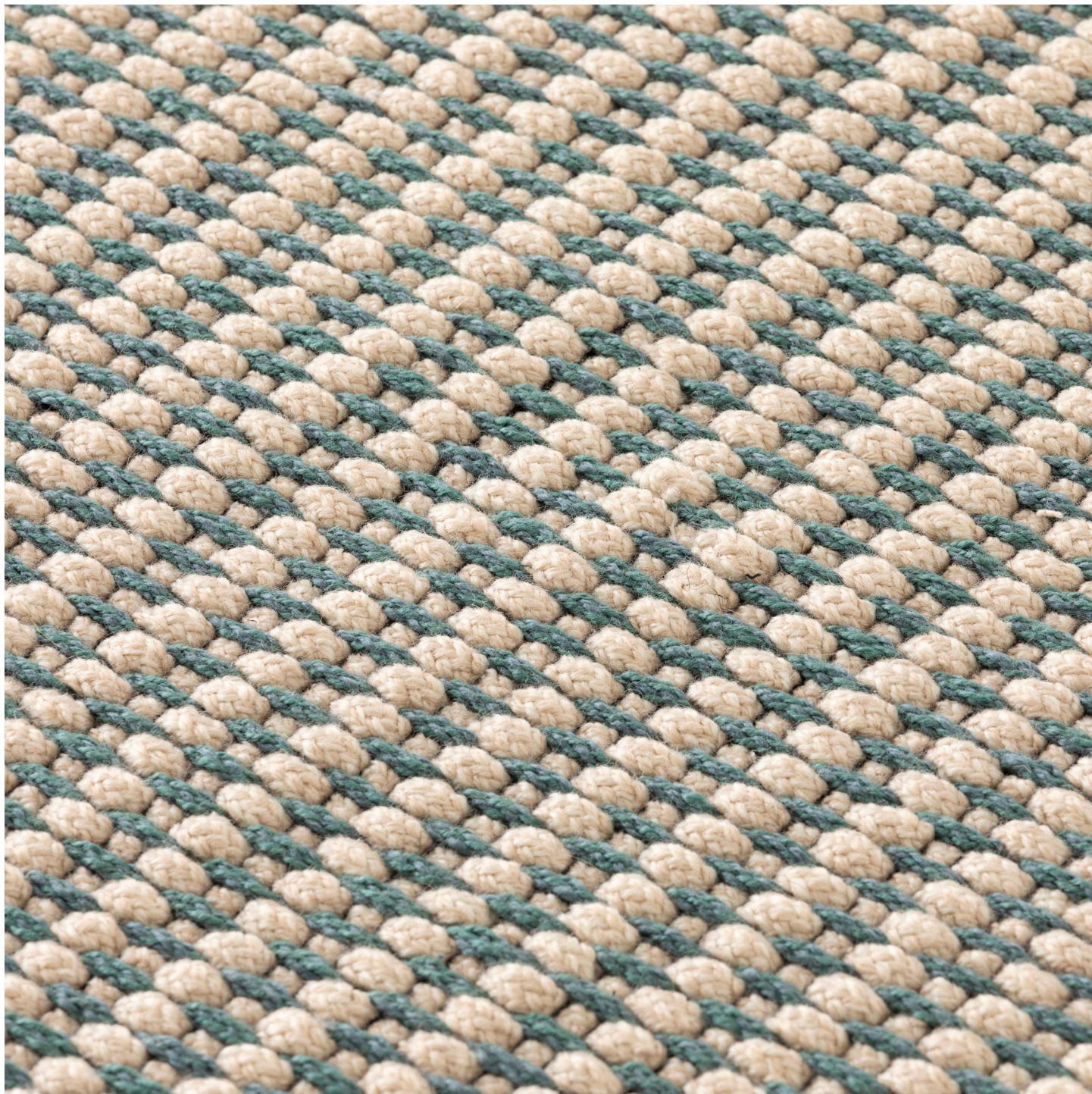


HAWORTH collection

Cord 

Rugs



HAWORTH collection

Cord Designed by Patricia Urquiola

Cord rugs were born from a partnership with purpose—offering artisans in India the ability to maintain their craft during a pandemic. Cord offers subdued textures and colors in a loom textile made from recycled PET—appropriate for both indoor and outdoor use.

Features

- Suitable for indoor and outdoor use
- Handcrafted rug made using loom construction
- Made from 100% recycled polyethylene terephthalate (PET)
- Rug thickness is approximately 0.6" (15 mm)

Accolades

- Metropolis Likes NYCxDESIGN Award

Rug Color

Celeste (AD-A01)

Grey (AD-A02)

Rosado (AD-A03)

Yellow (AD-A04)

Area Rug

