

HAWORTH

Be_Hold Smart

Your Playbook for reimagining hybrid workplace storage

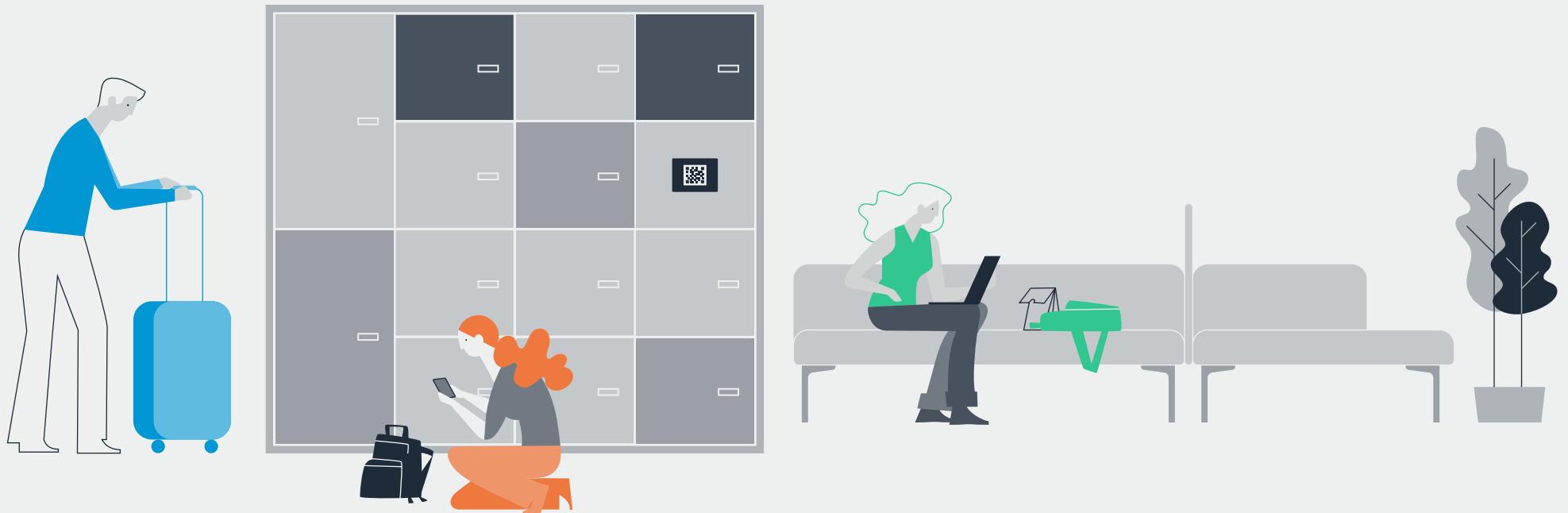


Table of Contents

Hybrid Work –
The Work From Anywhere
Ecosystem

Digital Workplace

Enter Be_Hold Smart

Be_Hold Smart offers a range of convenient access options

Who is it for?

Smart storage enables people to freely move around workspaces – including other campuses

Be_Hold Smart does little things to make your day easier

Be_Hold Smart Benefits

- for users
- for facility managers

Save time with easy maintenance on any campus

Optimise lockers for teams or activities

Use space for more collaborative settings

Be_Hold Smart protects your data – and your health

Be_Hold Smart will look great in any environment

Applications

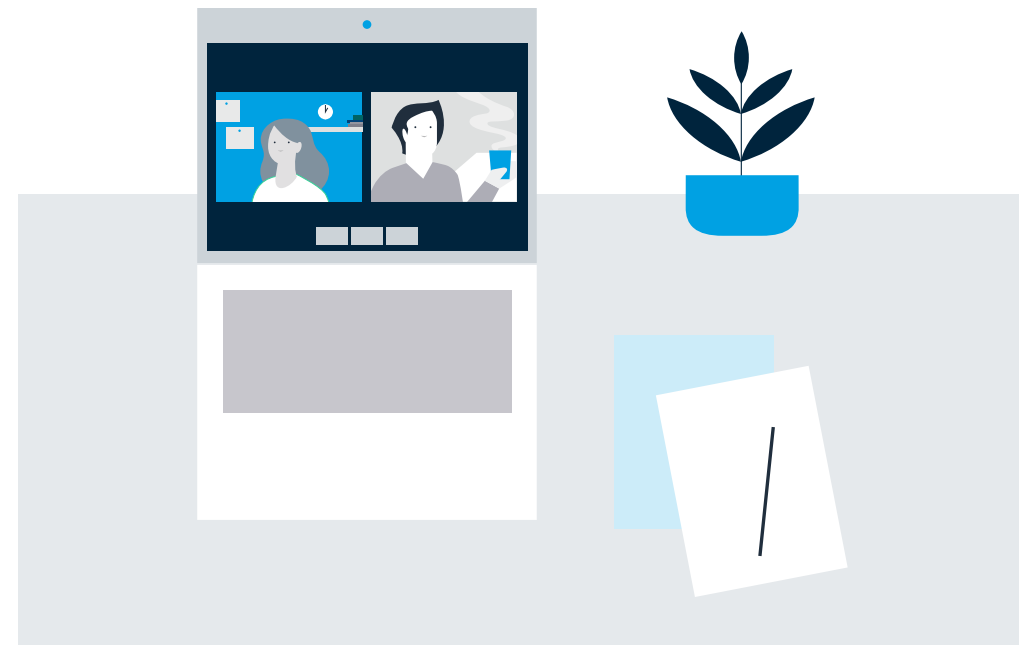
Assigned and unassigned mix on open floorplate

Convenient storage in receptions and lobbies

Smart storage to support project teams



With the rise of hybrid work and the digitisation of the workplace, storage must be reimagined.



Hybrid Work - The Work From Anywhere Ecosystem

Define

Hybrid work is work from anywhere. Hybrid simply means that work is done in multiple places; most often, this hybrid work is split between home and the office. Some people also work in third spaces like coffee shops.

Implications

In the office, hybrid work means people aren't in every day, so the balance between dedicated and unassigned workstations, lockers, and pedestals must be reexamined.

Hybrid work has a significant effect on workplace behavior as well. Research shows that activities in the office are becoming more connection-based – when people come in, they will be interacting more.



Digital Workplace

In the digital workplace, people can book everything they need for a successful day in one place. This includes workstations, meeting rooms, phone booths – and storage.

Smart Buildings
Space utilisation, technology usage, operating cost, worker mobility

Smart Spaces
Space occupancy, circulation, concierge services, cleaning frequency, asset management

Booking App
Staff can reserve seats in an agile workplace, sit next to their teams, connect with their colleagues at ease through a mobile app

Empowered Members
Wayfinding, room booking, workstation booking, personalisation, well-being

- 1 Entry & Exit**
Safety and assurance
- 2 Buildings & Motion**
Distancing, traffic flow, communication and space utilisation
- 3 Services**
Technology investment supports and maximises a seamless experience
- 4 Remote Workers**
Connection, collaboration and engagement
- 5 Meeting**
Occupancy, touchless usage, space utilisation and remote collaboration
- 6 Workspaces**
Distance availability and monitoring



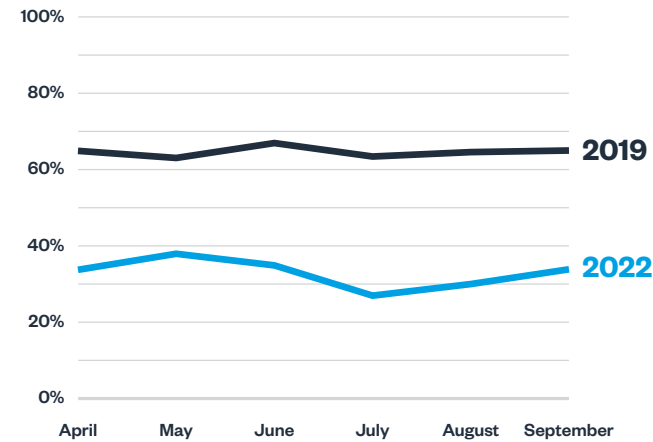
Enter Be_Hold Smart

Be_Hold Smart supports hybrid work and integrates into the digital workplace.

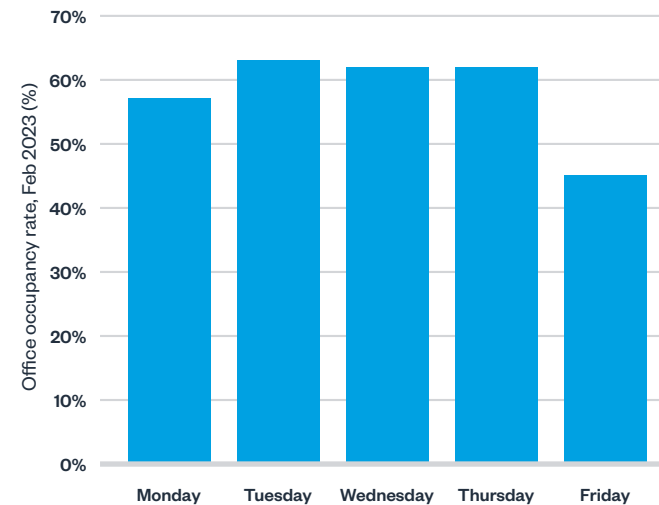
Data shows that average occupancy rates have decreased significantly following the embrace of hybrid working. While different markets have different occupancy rates, the general trend is similar – occupancy rates are decreasing on average. This has implications for the ideal storage footprint in a workspace.

Daily occupancy data paints a more complex picture. Hybrid working has created a crunch ‘time’ – Tuesdays, Wednesdays and Thursdays – and slow days – Fridays and, to a lesser extent, Mondays.

Smart lockers answer this challenge by maximising storage utilisation – helping you cover the crunch days whilst still reducing overall footprint compared to traditional storage.



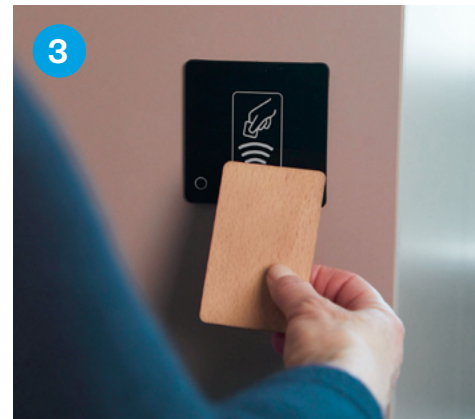
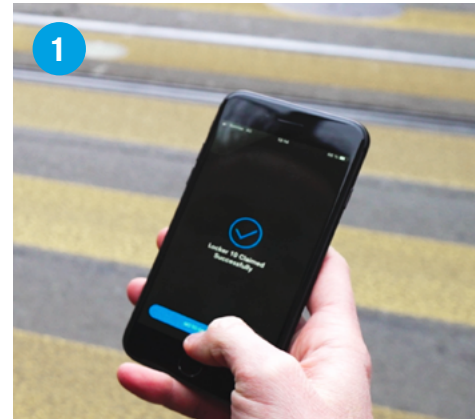
Monthly average occupancy trending (global)
Source: Relogix Benchmarking Report, Nov. 2022



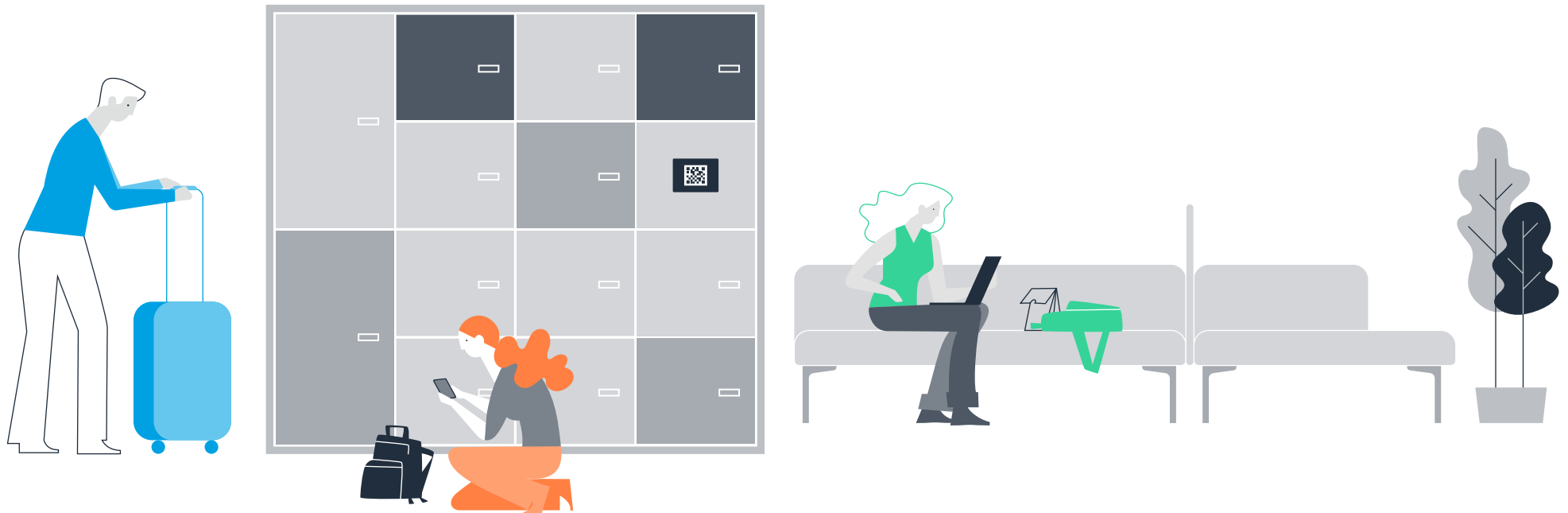
Average daily occupancy rates: peak on Tuesday to Thursday
Source: Savills Research

Be_Hold Smart offers a range of convenient access options

- 1 App.** Some organisations prefer to use an app for storage access. Locker access can be integrated into an organisation's digital workplace architecture. An added bonus: employees can use the app to pre-book a locker before coming into the office.
- 2 QR Code.** QR code entry is a convenient option for lockers in areas with lots of visitors or external guests.
- 3 RFID.** This is a great option for organisations already using employee badges. This access option is best for lockers in areas where the vast majority of users are internal.
- 4 Digital screen.** This option works well in busy areas where there is a mix of internal and external users.



Who is it for?



Team storage

Team members come into hybrid offices at different times. Be_Hold Smart allows teams to have shared access to common materials, so no one is left out of the loop or prevented from contributing.



Personal storage

People always have *stuff* – but some days our hands are especially full! Be_Hold Smart allows individual users to choose the size of locker – and the locker location – that is best for them each day.



Guest storage

Hybrid offices often host clients, drop-in visitors or guests who work in the space for just a few hours. Working in an unfamiliar space and carrying a ton of stuff can be a stressful, isolating experience – but Be_Hold Smart makes it easy.

Smart storage enables people to freely move around workspaces – including other campuses

Encourage movement with hubs

- 1 Visitors**
in co-working spaces
- 2 Assigned**
in office environment for personal or group use
- 3 Assigned & visitors**
in cloakrooms and Click & Collect in lobbies



Be_Hold Smart does little things to make your day easier

Store your stuff in lockers near your activity-based settings; you won't have to keep going back to the same place all day.

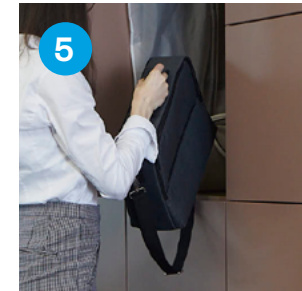
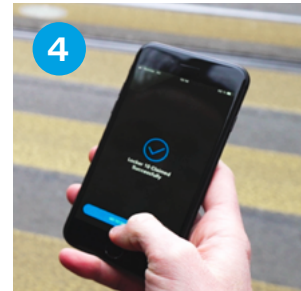


Be_Hold Smart is easy to open – no keys or combinations to worry about.



Charge your devices with a USB outlet inside each locker.

Prebook a locker before you come into work.



Choose the size just right for each day.

Each locker has a light, so it's easy to find your things.



Be_Hold Smart Benefits

for users



Easy to access storage for users' belongings

- Open the locker via the app, RFID through your member card, a QR code, or via the digital screen in the lockers
- User-friendly (best employee experience): You can pre-book exactly the size you need before you come in
- You can charge your devices with a USB outlet inside each locker – and each one has a light, so it's easy to find your stuff



Support hybrid work

- Possibility to share a locker with your team – hybrid teams can access project materials anyday



Harmonious workplace

- The locker app can be integrated into any smart building app for a full digital work experience
- The Patricia Urquiola colour palette brings warmth to the office
- Be_Hold Smart harmonises with the wider Be_Hold storage family



Safe

- Contactless access for post-Covid environment

Be_Hold Smart Benefits

for facility managers



Easier maintenance / save time

- Offer a locker management platform to optimise resources and time saving in maintenance
- Offer a solution for worldwide companies
- Easy installation



Optimisation

- Accommodate different profiles (residents, visitors, Click & Collect, groups...)
- Offer a drop off/pick up feature to facilitate parcels deliveries



Security

- Data is secure, protected by Microsoft Azure and hosted locally
- No key can be stolen

Save time with easy maintenance on any campus

Be_Hold Smart will save time. Because Be_Hold Smart is a plug and play solution, installation and maintenance time is sharply reduced.

The locker management platform provides optimisation data, showing in real time locations where lockers are being underutilised and locations that could use more. Be_Hold Smart allows any individual locker column to be added to any locker wall, providing flexibility and risk reduction.

For companies with many campuses spread across the globe, the management platform allows lockers in any geography to be easily managed.



Optimise lockers for teams or activities

A set number of lockers can be shared across one team, allowing every member access on the days when they are in the office. Lockers can even be shared across an entire department.

Locker profiles can accommodate several different user profiles. Lockers can be set to support individual residents, teams, drop-in visitors, Click & Collect, seasonal project teams, workshop groups, and more.

Be_Hold Smart can facilitate parcel collection with a drop off/pick up feature.



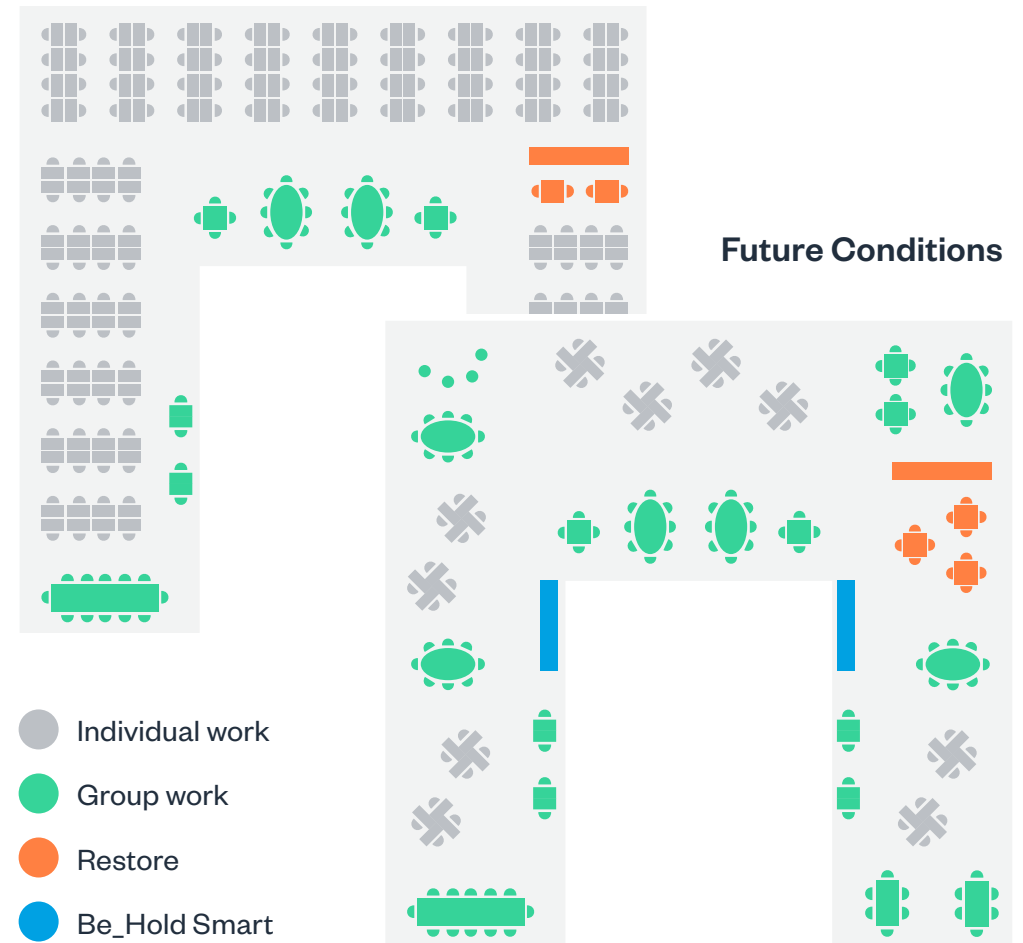
Use space for more collaborative settings

Switching from traditional storage to Be_Hold Smart will reduce building storage footprint by maximising storage utilisation.

One implication of hybrid working is that activities in the office will be more collaborative and connection-based; that means more collaborative settings. Replacing inefficient traditional storage with Be_Hold Smart will save footprint space that can be reallocated for more effective use.

Be_Hold Smart will make people happy; better settings for hybrid workers will make people even happier.

Existing Conditions



Be_Hold Smart protects your data – and your health

Be_Hold Smart locks protect users' data, while the lockers protect their belongings.

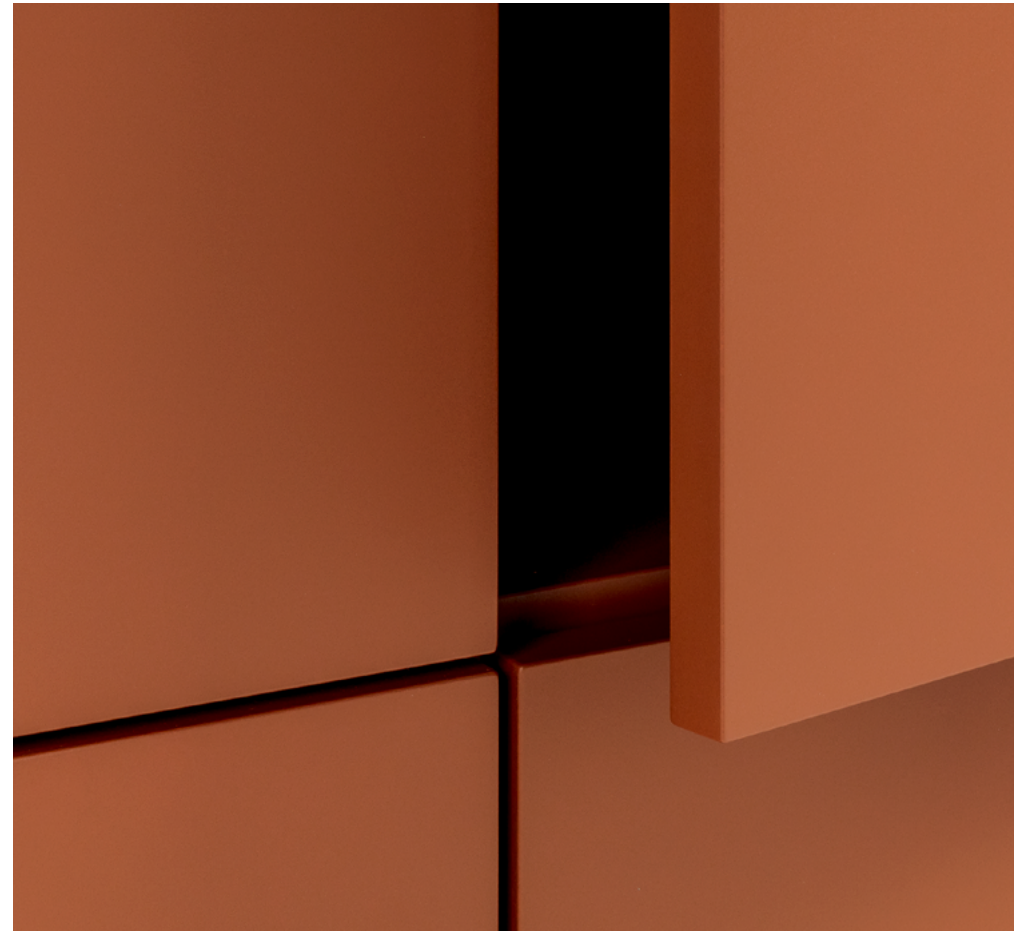
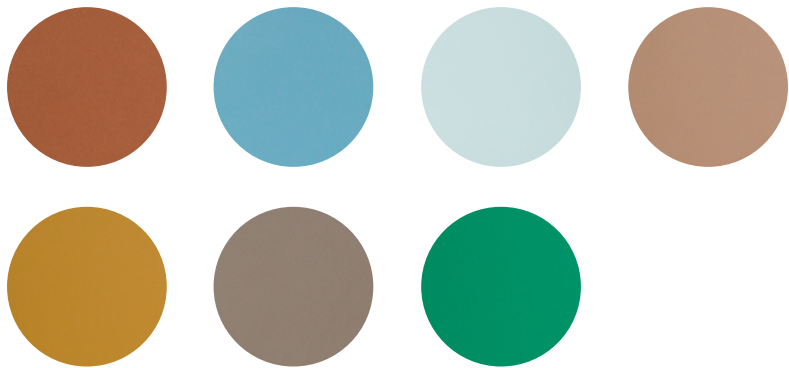
With Be_Hold Smart, there are no keys to be lost – or stolen. There are no combinations to forget – and no hastily scrawled notes with combinations that might be found by others.

Be_Hold Smart offers contactless access, a basic expectation in the post-Covid environment. This contactless access benefits any user profile – the team members who come in more often during busy periods, the drop-in visitors, and the people delivering and picking up their packages.



Be_Hold Smart will look great in any environment

Be_Hold Smart's clean aesthetics work in any environment. Plus, Be_Hold Smart feels right at home with the larger Be_Hold family – all the storage solutions in the space will feel cohesive. And with its colour palette, Be_Hold Smart is energetic, warm and welcoming.





Be_Hold Smart

Applications

Assigned and unassigned mix on open floorplate

With a mix of assigned and unassigned locker profiles, Be_Hold Smart offers peace of mind and flexibility.

1

Assigned lockers support individual and teams who consistently need storage in this area. Assigned storage is particularly necessary for long-term project teams.

2

Unassigned portions of this locker wall adapt to changing storage needs. Here, users can store prototypes, mockups, seasonal coats or higher-than-usual amounts of work materials – handy if a team is running a workshop or a brainstorming session.











Convenient storage in receptions and lobbies

Be_Hold Smart offers convenient locker solutions for all types of users.

1

Lockers can be set to Click & Collect for convenient parcel pickup.

2

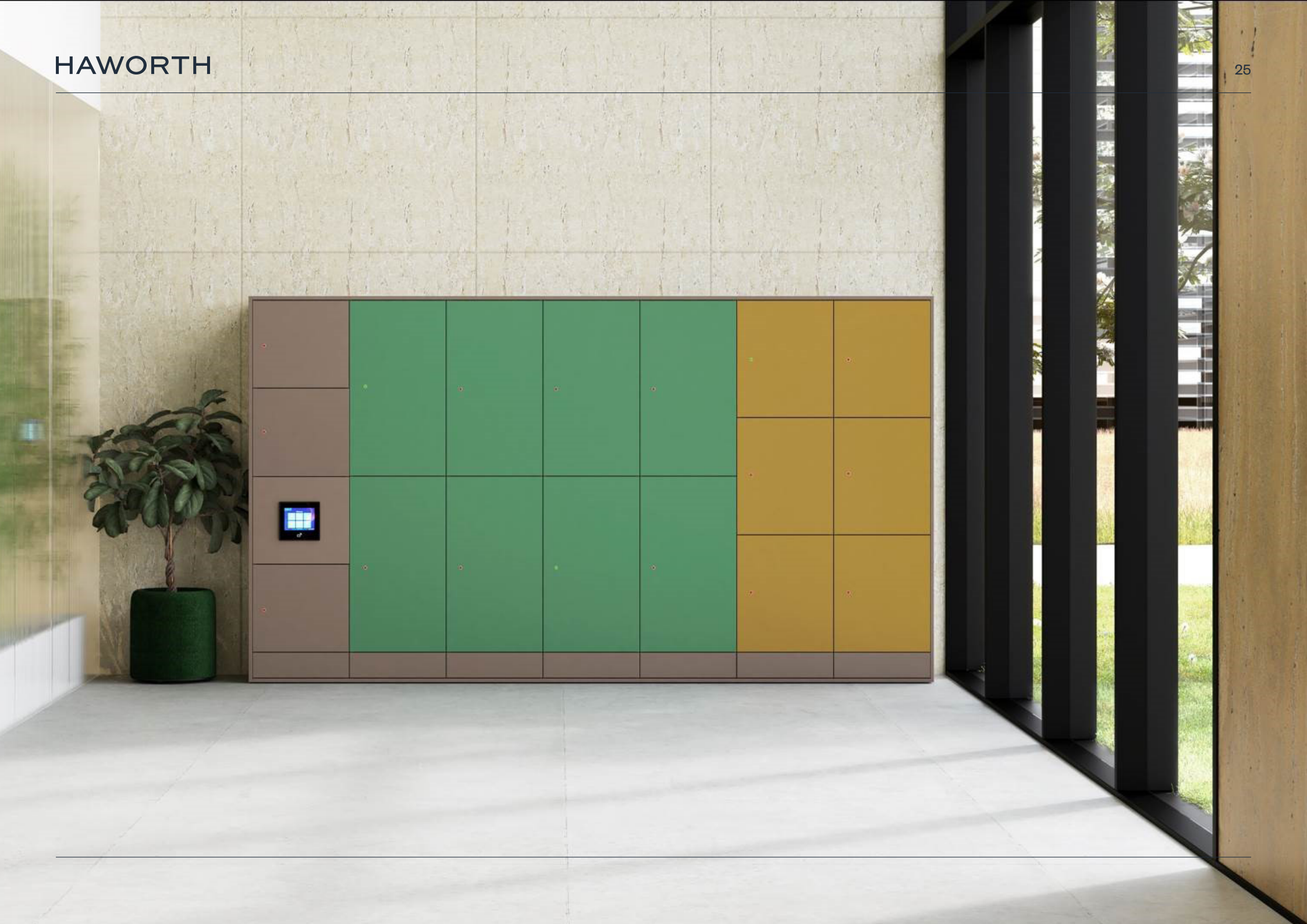
Visitors and drop-in guests can use public lockers placed near the lobby.

3

4

On any given day, we may have to carry more or less stuff than usual. Be_Hold Smart allows individual storage to flex. Individual users can select the size of the locker that suits their needs each day.













Smart storage to support project teams

Hybrid team gatherings are becoming more flexible – and Be_Hold Smart flexes to meet the needs of the group.

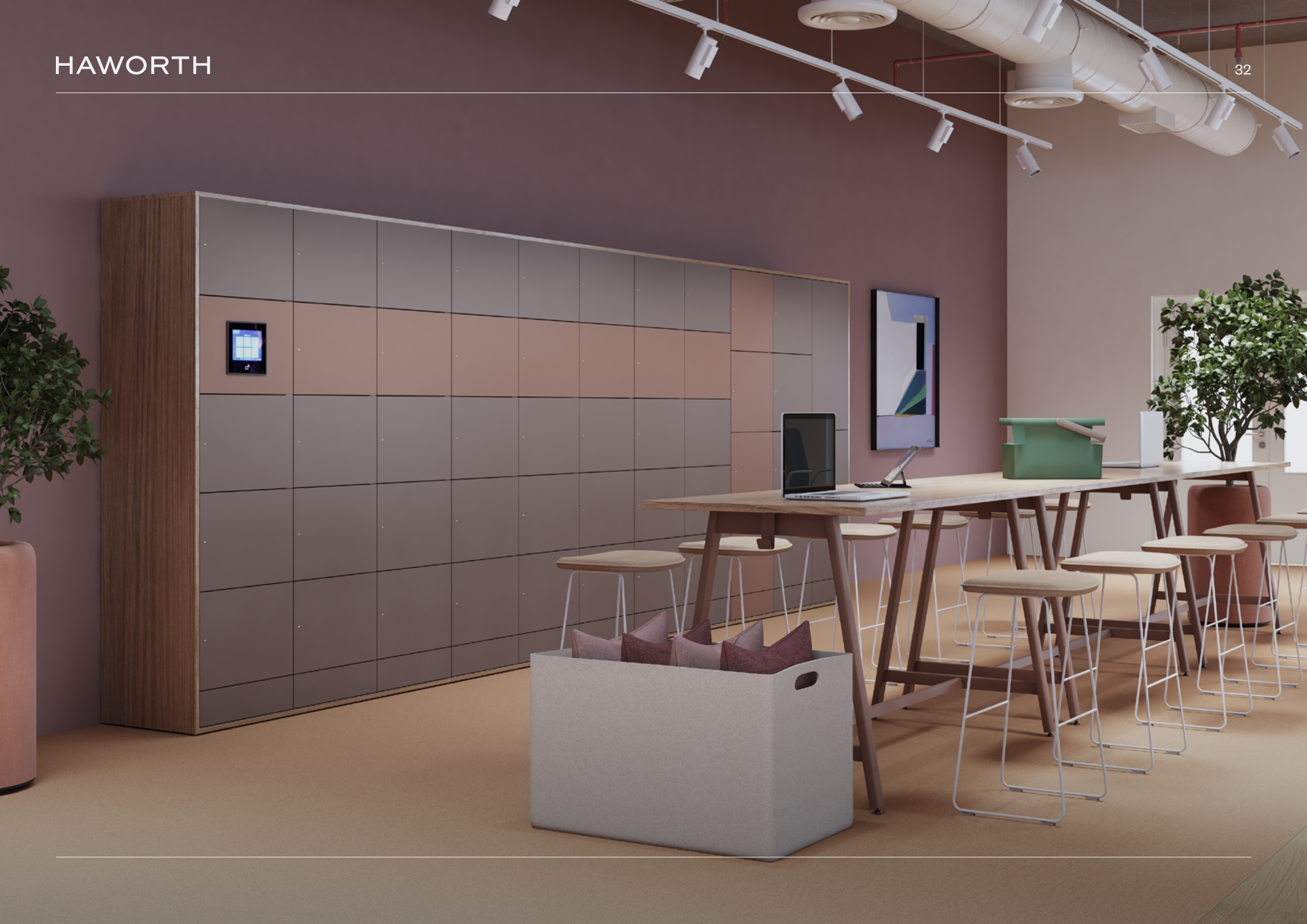
For regular team check-ins, Be_Hold Smart can be set for unassigned individual use.

If a project team will use the area for an extended period of time, a group of lockers can be assigned to the full team, allowing for secure, shared access for the duration of the project.

For brainstorming sessions, workshops, or trainings that gather members from many locations – lugging more materials than usual – unassigned lockers in a range of sizes will take the stress out of finding storage.













HAWORTH

HAWORTH® is a registered trademark of Haworth, Inc.
September 2023 © Haworth, Inc. All rights reserved.

[haworth.com](https://www.haworth.com)