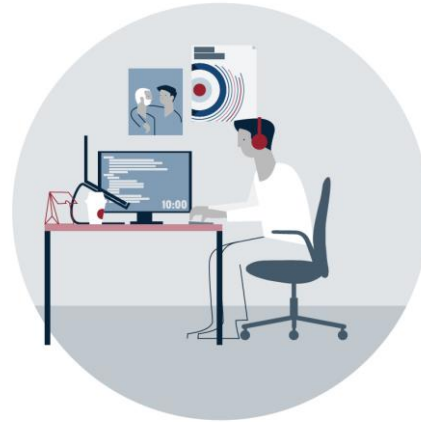


# **Zody II and Zody LX presentation**

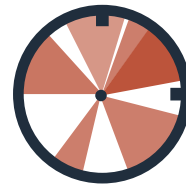
# Content

- Value proposition
- Statement Of Line & Features
- Adjustments
- Colours and Materials
- Certifications
- Idea starters & Applications

# Workplace Ergonomics have evolved



**From** 8h assigned work



**To** a variety of tasks over the workday

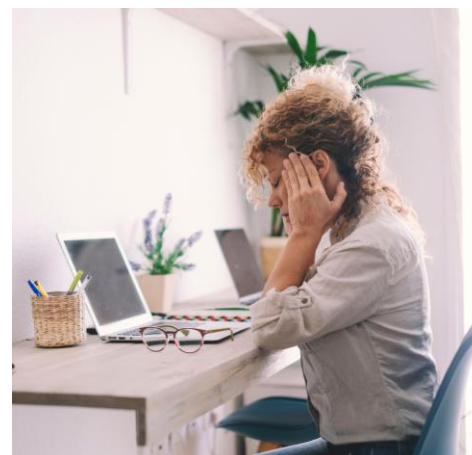
# Research increasingly points toward the conclusion that...



**How you sit  
is crucial for  
your health**



# Research increasingly points toward the conclusion that...

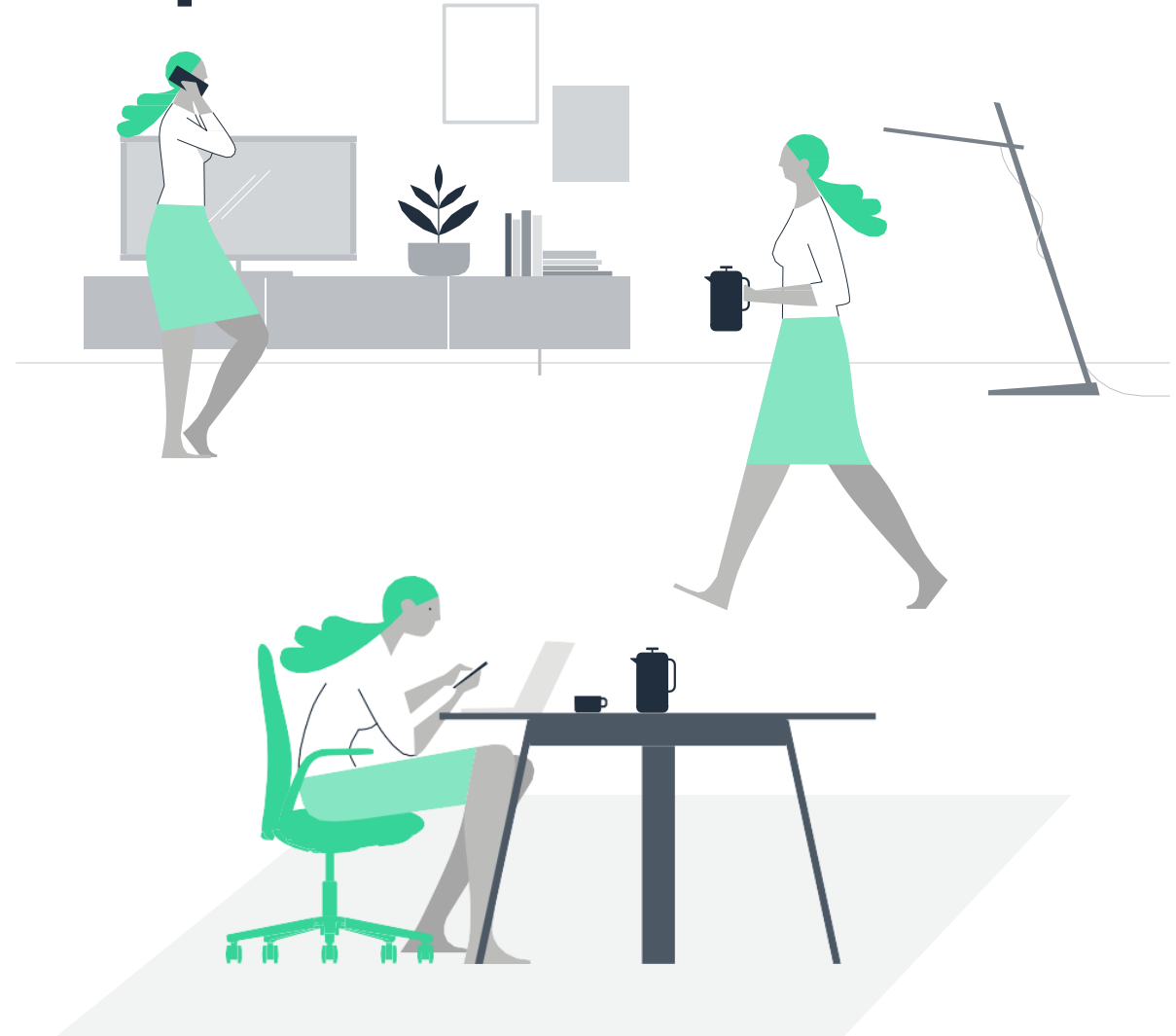


**How you sit is  
crucial for  
your health**

# How should we design ergonomic spaces?

## 4 Basic Ergonomic Design Tips

- 1** Design ergonomic workstations to support a variety of postures and proximity to the work surface.
- 2** Encourage users to sit or stand centred at their task or with the computer monitor close to the ergonomically designed work surface.
- 3** Promote healthy postures through strategic worksurface item placement
- 4** Encourage increased movement, steps, and posture changes throughout the workday.



# Modern Workplace Ergonomics

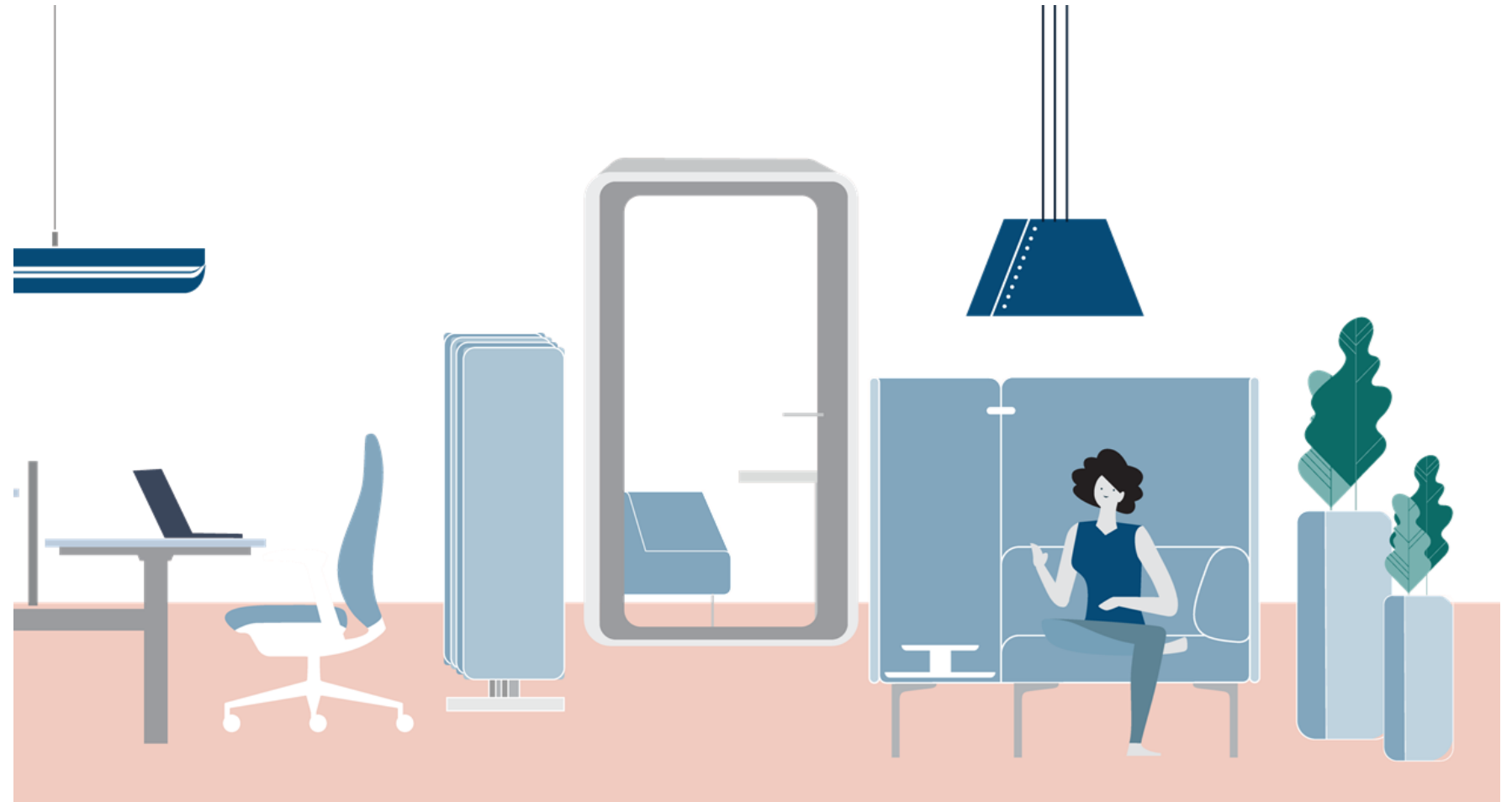
Shape spaces that combat inactivity and positively support workplace wellness initiatives

**Affordances:** Spaces and objects that encourage Emotional, cognitive and physical support.

**Movement:** As humans, we are made to **move**. Ultimately, the best posture, position, or location is the next one.

**Biophilia:** using [biophilic design](#), reduces stress and provides a sense of security.

**Acoustical performance in the Workplace** is essential for individual focus work as well as private collaboration.



# How to adjust your worksation

- 1 Provide adjustable seating that allows users to assume different postures in upright, reclined, or forward tilt positions.
- 2 Torso to thigh angle should be 90 degrees or greater when sitting.
- 3 When sitting, armrests should not interfere with the user getting close to the work surface.
- 4 Clearance under the worksurface should allow room for legs without contacting the surface above.
- 5 Allow for freedom of movement—there should be no obstructions at foot level.
- 6 The feet should be flat on the floor or the footrest when sitting.





# More Support for More Postures = More Control for More People

[Research](#) suggests one of the best ways to increase resilience to stressors in the workplace is to give people more control over their work environment.

The dual posture functionality makes room for perching—a balanced, in-between posture that combines the benefits of sitting and standing.

The new feature makes Zody II and Zody LX ideal for working at a height-adjustable desk. The adjustment controls — used to change seat height, recline angle, recline resistance, etc.—were also redesigned to be more intuitive.



# Why support the “perch position”? The benefits of increased mobility through the dual posture function



Users spend less time sitting



Users are more active throughout the day



Users report less discomfort

Perching is the catalyst for a healthier workstyle.  
With reduced sitting time.

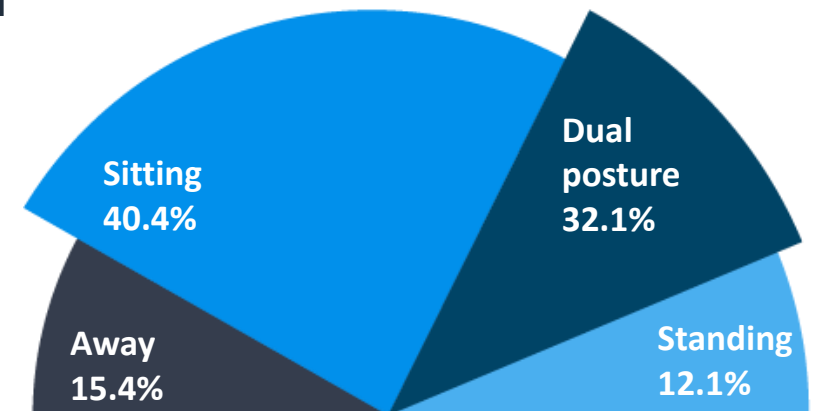
## Test without Zody II

Time spent



## Test with Zody II

Time spent in postures and away



# Changing the ways people work

When Zody II was tested in a recent study, participants:

- Spontaneously adjusted their position 11% more frequently (from 2.7 changes to 3)
- Reduced the average length of their sitting sessions by 12% (101 minutes to 89 minutes)
- Reduced the average length of their standing sessions by 8% (48min to 44min)
- Reported decreased body discomfort in both frequency and intensity

Reported activities where people preferred using it:



Heads down,  
computer work



Talking to a co-worker – an opportunity to be on  
the same level when having conversations

Based on our seating study results, dual posture was ranked as the position people preferred to do their best work:



Seated  
**40.0%**



Dual posture  
**43.3%**



Standing  
**16.7%**

# A closer look: The Perch Position

Dual posture provides support for sitting and perching postures

- Support lumbar spine alignment
- Greater change in the position of the legs where they connect to the pelvis
- Decreased opportunity for lower back pain



# Our best-selling Zody chair just got better!

- Ergonomic pioneer with a makeover
- Globally Celebrated
- Chair of Firsts

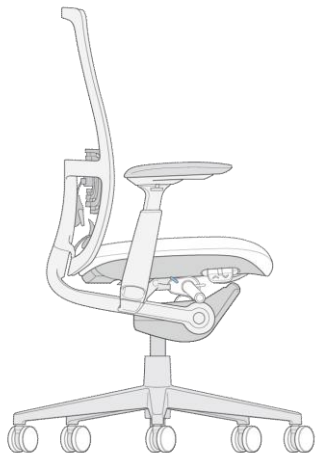


## Zody II



## Zody LX

- Built on a Legacy
- Informed Comfort
- The Future of Performance Seating





# The evolution – A new chapter

## Zody Classic



- A classic remaining at the forefront of innovation
- Product of extensive research and development



## Zody II



- Retaining the essence of Zody
- Refined controls
- Design upgrade
- More freedom of movement: Dual posture – to make it easy to change postures during the workday





# The evolution – A new chapter

## Zody Classic



A **classic** remaining at the forefront of innovation  
Product of extensive research and development



## Zody LX



All the improvements of Zody II.  
Fully upholstered back for a softer and more residential  
experience without compromising ergonomic performance



# Get to know Zody II

Zody II task seating offers enhanced ergonomics to support multiple body shapes and postures.

Its international design sensibilities and extensive breadth of possibilities—from traditional to progressive—offer more design freedom than any other chair to serve any market in the world.



# Get to know Zody LX

Still engineered for performance, the Y-brace supports your back while enabling torsional movement. The seat's ergonomic design accommodates various body types and maintains a sleek appearance, particularly with stylish arm caps.

With both the seat and back fully upholstered, our extensive fabric selection ensures that Zody LX can seamlessly integrate into any space with a design suitable for diverse applications, even those with a more residential feel.



# Statement Of Line & Features

## Statement Of Line Zody II and Zody LX

Zody II (Mesh /Knit Back)

Posture types:

- Task chair
- Dual posture chair
- Task Stool

Zody LX (Fully upholstered)

Posture types:

- Task chair
- Dual posture chair
- Task Stool

Zody II



Zody LX





# Features - Zody II

**Arms with Aluminum Supports**  
Armless  
Fixed  
Height-adjustable  
4D

**Mechanism**  
Back Stop  
Forward Tilt w/ Back Stop  
Manual Weight Control

**Base**  
Plastic  
Painted Aluminum  
Polished Aluminum

**Headrest**  
New Headrest  
(phase 2)

**Mesh Back**  
Mesh Back  
Knit Back (phase 2)  
Optional upholstered jacket

**Lumbar support**  
None  
PAL™  
Height-adjustable Lumbar

**Seat**  
Adjustable  
Comfort foam

**Castors**  
Plastic Hard or Soft castors



*\*Dual posture only available with arms, on aluminum base, and with forward tilt.*



# Features - Zody LX

## Arms with Aluminum Supports

Armless  
Fixed  
Height-adjustable  
4D

## Mechanism

Back Stop  
Forward Tilt w/ Back Stop  
Manual Weight Control

## Base

Plastic  
Painted Aluminum  
Polished Aluminum

## Upholstered Back

Fabric  
Faux Leather  
Leather

## Lumbar support

None  
Height Adjustable

## Seat

Adjustable  
Comfort foam

## Castors

Plastic, Hard or Soft castors



*\*Dual posture only available with arms, on aluminum base, and with forward tilt.*

# Adjustments

## How to adjust your Zody II



Download Zody II user guide

## How to adjust your Zody LX

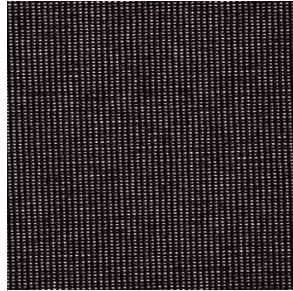


Download Zody LX user guide

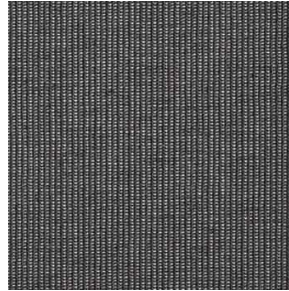
# Colours and Materials

## Colours & Materials

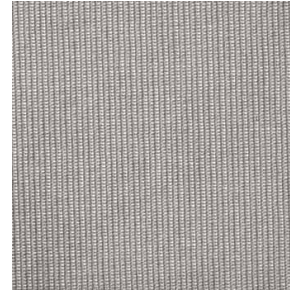
### Mesh colours



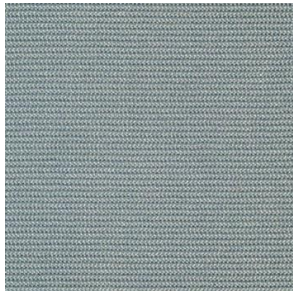
MA201 Support



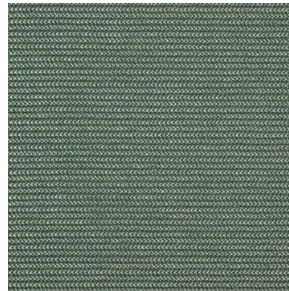
MA202 Comfort



MA223 Relax



MA209 WATER



MA204 BALSAM



Colours & Materials

Finishes

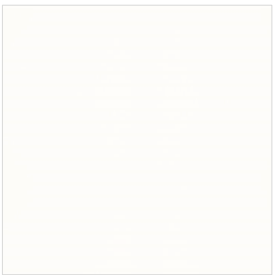
Plastic Frame



Black  
TR00F



Fog  
TR007



Snow  
TROFM

Plastic Base



Black  
TR00F

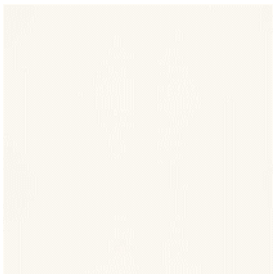


Fog  
TR007

Aluminum Base



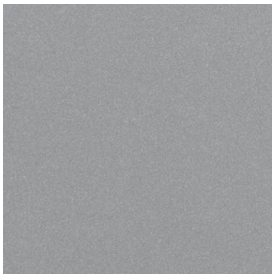
Matte EU Black  
TRMTB



Matte EU White  
TRMTW



Polished Aluminum  
PM00P



Metallic Silver  
TROLE

Colours & Materials

Colour Logic



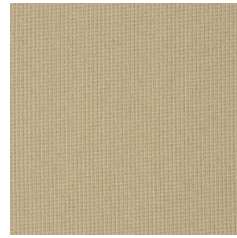
| Plastic frame<br>(including headrest trim) | Lumbar Kit<br>(including pad, pelvic) | Arm caps | Base   | Mechanism | Control Levers | Castors   |
|--|---------------------------------------|----------|--|-----------|----------------|---|
| Black                                      | Black                                 | Black    | Plastic Black<br>Plastic Fog<br>Powder coated aluminum<br>Metallic Silver<br>Powder coated aluminum<br>Matte EU Black<br>Powder coated aluminum<br>Matte EU White<br>Polished Aluminum | Black     | Black          | Black hard castors for carpet<br>2-tone Grey hard castors for carpet<br>2-tone White hard castors for carpet<br>Black soft castors for hard floor |
| Snow                                       | Fog                                   | Fog      |  | Snow      | Fog            |   |
| Fog  | Fog                                   | Fog      |  | Fog       | Fog            |   |

HAWORTH

## Colours & Materials

### Seat & Back upholstery

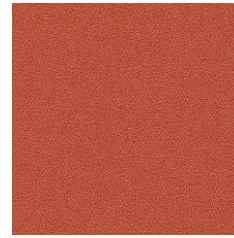
Haworth AP standard fabric collections



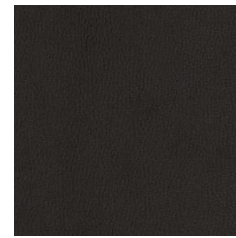
Gauge



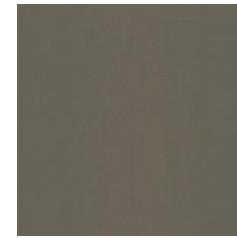
Horizon



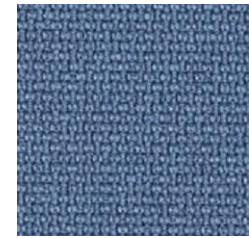
Tellure



Wellington faux  
leather



Chapter faux  
leather



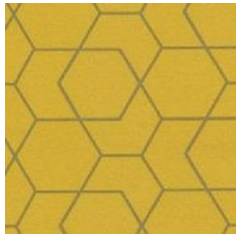
Fighter



Lucia II



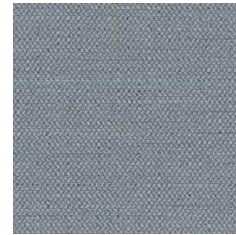
Medley



Angle printing



Combo



Era



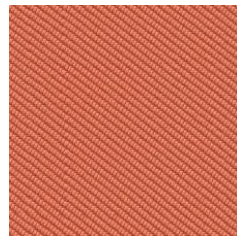
Mozart



X2



Focus



Oceanic



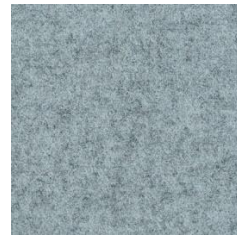
Diagonale



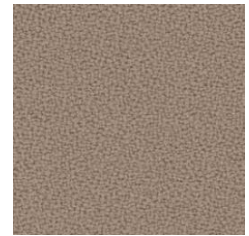
Europost



Synergy



Blazer



New Aquarius



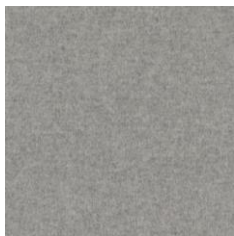
Relate



Remix 3



Atlas



Divina  
Melange 3



Steelcut Trio 3



Hallingdal 65



AP Leather

# Certifications

## Certifications

- BIFMA Level 2
- BIFMA x5.11
- GS sign, type A
- GreenGuard
- Greenuard Gold
- Quality Office
- FEMB level 3



# Idea starters and Applications



HAWORTH

## Focus areas



HAWORTH

## Focus areas





HAWORTH

## Collaborative areas



HAWORTH

## Meeting rooms





HAWORTH

## Home office



HAWORTH

## Home office





# Thank you