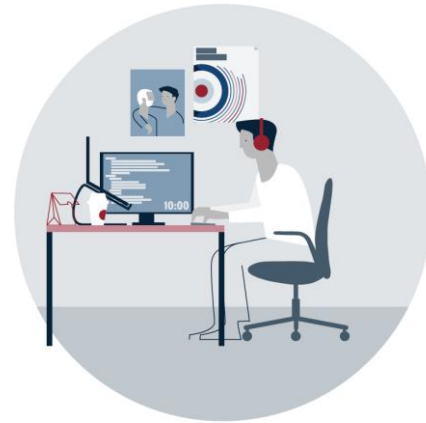


# Zody II and Zody LX Overview

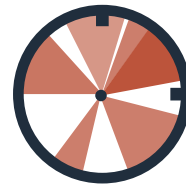
# Content

- Value proposition
- Statement Of Line & Features
- Adjustments
- Colours and Materials
- Sustainability & Certifications
- Idea starters & Applications

# Workplace Ergonomics have evolved



**From** 8h assigned work



**To** a variety of tasks over the workday

# Research increasingly points toward the conclusion that...

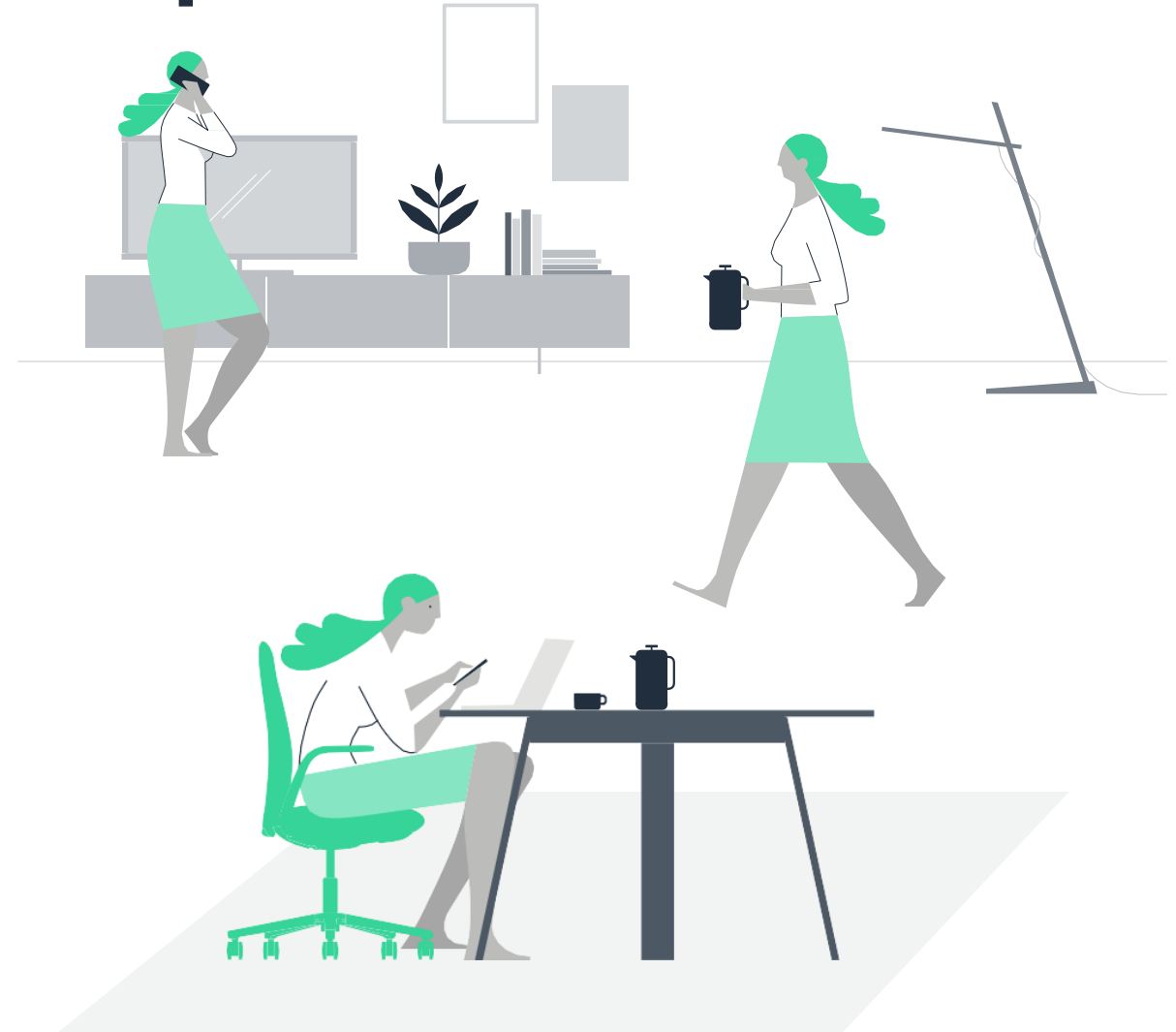


**How you sit is crucial for your health**

# How should we design ergonomic spaces?

## 4 Basic Ergonomic Design Tips

- 1** Design ergonomic workstations to support a variety of postures and proximity to the work surface.
- 2** Encourage users to sit or stand centred at their task or with the computer monitor close to the ergonomically designed work surface.
- 3** Promote healthy postures through strategic worksurface item placement
- 4** Encourage increased movement, steps, and posture changes throughout the workday.



# Modern Workplace Ergonomics

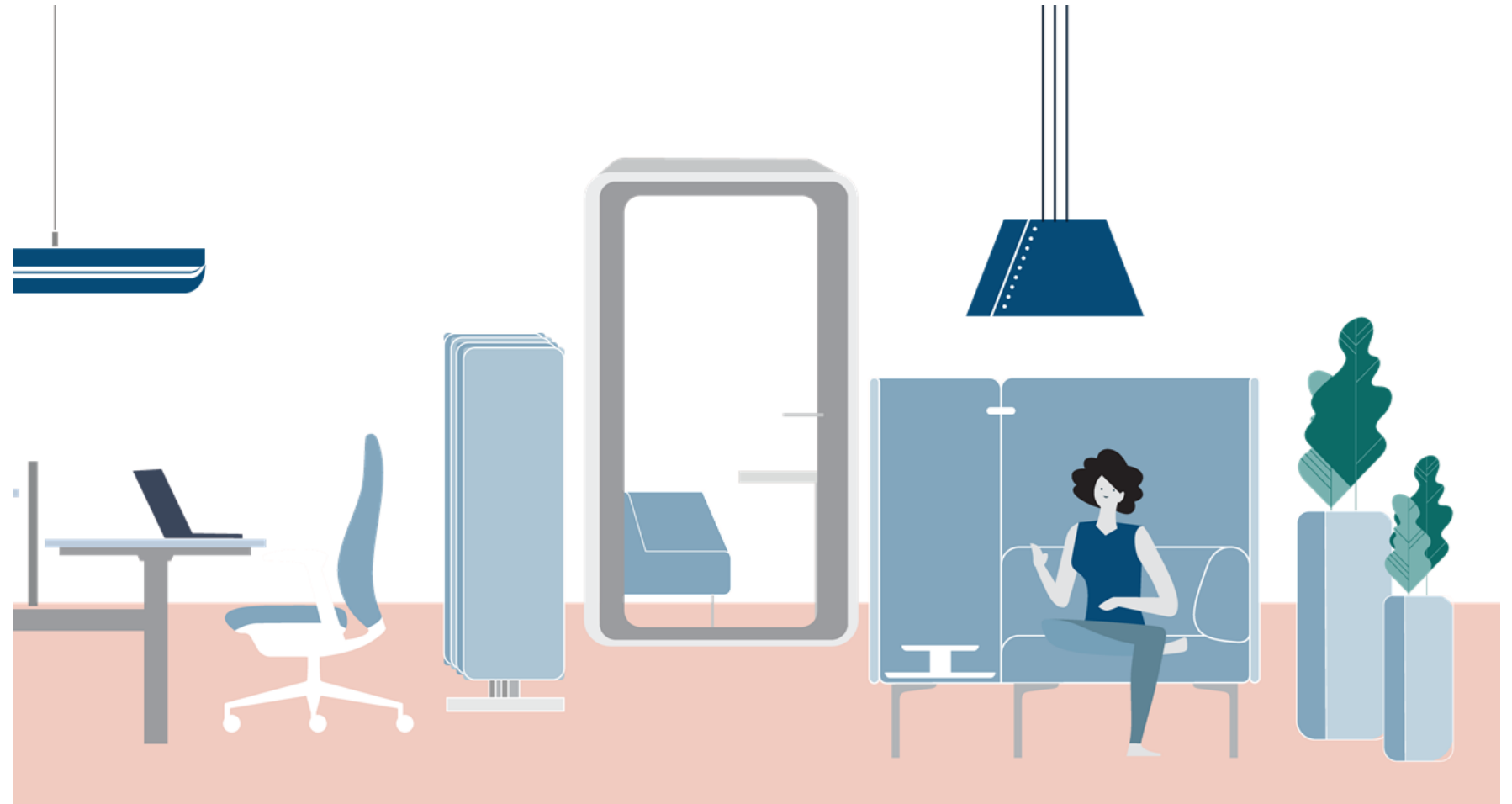
Shape spaces that combat inactivity and positively support workplace wellness initiatives

**Affordances:** Spaces and objects that encourage Emotional, cognitive and physical support.

**Movement:** As humans, we are made to **move**. Ultimately, the best posture, position, or location is the next one.

**Biophilia:** using [biophilic design](#), reduces stress and provides a sense of security.

[Acoustical performance in the Workplace](#) is essential for individual focus work as well as private collaboration.



# How to adjust your worksation

- 1 Provide adjustable seating that allows users to assume different postures in upright, reclined, or forward tilt positions.
- 2 Torso to thigh angle should be 90 degrees or greater when sitting.
- 3 When sitting, armrests should not interfere with the user getting close to the work surface.
- 4 Clearance under the worksurface should allow room for legs without contacting the surface above.
- 5 Allow for freedom of movement—there should be no obstructions at foot level.
- 6 The feet should be flat on the floor or the footrest when sitting.



# More Support for More Postures = More Control for More People

[Research](#) suggests one of the best ways to increase resilience to stressors in the workplace is to give people more control over their work environment.

The dual posture functionality makes room for perching—a balanced, in-between posture that combines the benefits of sitting and standing.

The new feature makes Zody II and Zody LX ideal for working at a height-adjustable desk. The adjustment controls — used to change seat height, recline angle, recline resistance, etc.—were also redesigned to be more intuitive.





# Why support the “perch position”? The benefits of increased mobility through the dual posture function



Users spend less time sitting



Users are more active throughout the day



Users report less discomfort

Perching is the catalyst for a healthier workstyle. With reduced sitting time.

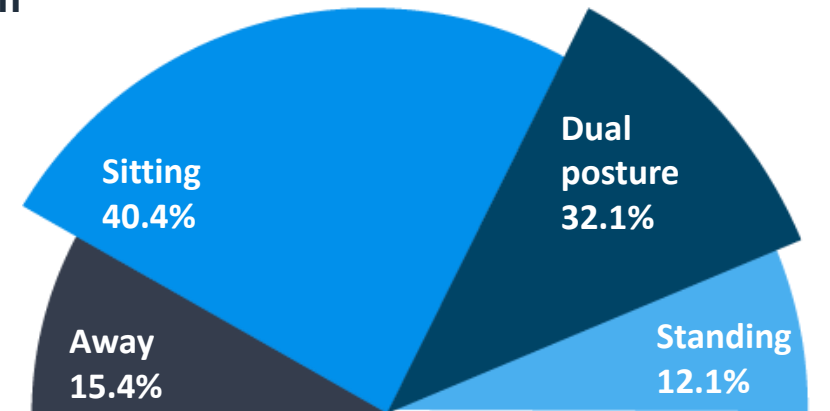
Test without Zody II

Time spent



Test with Zody II

Time spent in postures and away



# Changing the ways people work

When Zody II was tested in a recent study, participants:

- Spontaneously adjusted their position 11% more frequently (from 2.7 changes to 3)
- Reduced the average length of their sitting sessions by 12% (101 minutes to 89 minutes)
- Reduced the average length of their standing sessions by 8% (48min to 44min)
- Reported decreased body discomfort in both frequency and intensity

Reported activities where people preferred using it:



Heads down,  
computer work



Talking to a co-worker – an opportunity to be on the same level when having conversations

Based on our seating study results, dual posture was ranked as the position people preferred to do their best work:



**Seated**  
**40.0%**



**Dual posture**  
**43.3%**



**Standing**  
**16.7%**

# A closer look: The Perch Position

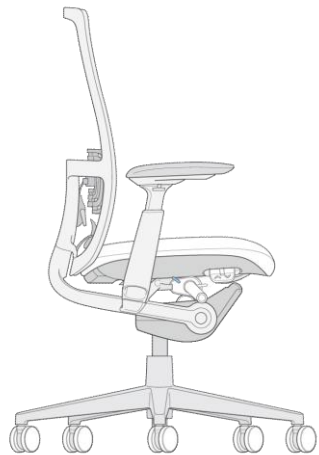
Dual posture provides support for sitting and perching postures

- Support lumbar spine alignment
- Greater change in the position of the legs where they connect to the pelvis
- Decreased opportunity for lower back pain



# Our best-selling Zody chair just got better!

- Ergonomic pioneer with a makeover
- Globally Celebrated
- Chair of Firsts



## Zody II



## Zody LX

- Built on a Legacy
- Informed Comfort
- The Future of Performance Seating



# The evolution – A new chapter

## Zody Classic



- A classic remaining at the forefront of innovation
- Product of extensive research and development



## Zody II



- Retaining the essence of Zody
- Refined controls
- Design upgrade
- More freedom of movement: Dual posture – to make it easy to change postures during the workday



# The evolution – A new chapter

## Zody Classic



A **classic** remaining at the forefront of innovation  
Product of extensive research and development



## Zody LX



All the improvements of Zody II.  
Fully upholstered back for a softer and more residential  
experience without compromising ergonomic performance



# Get to know Zody II

Zody II task seating offers enhanced ergonomics to support multiple body shapes and postures.

Its international design sensibilities and extensive breadth of possibilities—from traditional to progressive—offer more design freedom than any other chair to serve any market in the world.



# Get to know Zody LX

Still engineered for performance, the Y-brace supports your back while enabling torsional movement. The seat's ergonomic design accommodates various body types and maintains a sleek appearance, particularly with stylish arm caps.

With both the seat and back fully upholstered, our extensive fabric selection ensures that Zody LX can seamlessly integrate into any space with a design suitable for diverse applications, even those with a more residential feel.





# Statement Of Line & Features

## Statement Of Line Zody II and Zody LX

Zody II (Mesh /Knit Back\*)

Posture types:

- Task chair
- Dual posture chair

Zody LX (Fully upholstered)

Posture types:

- Task chair
- Dual posture chair

\*Available soon

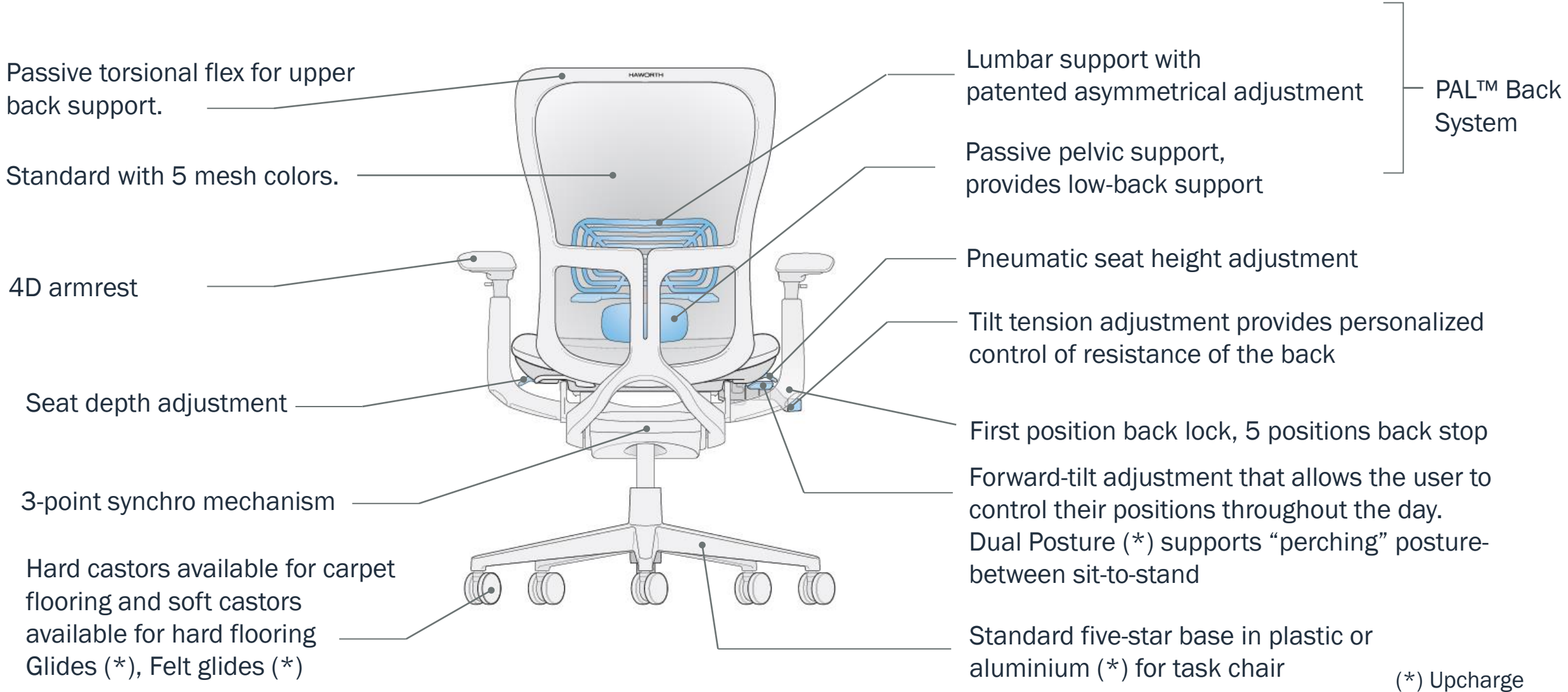


Zody II

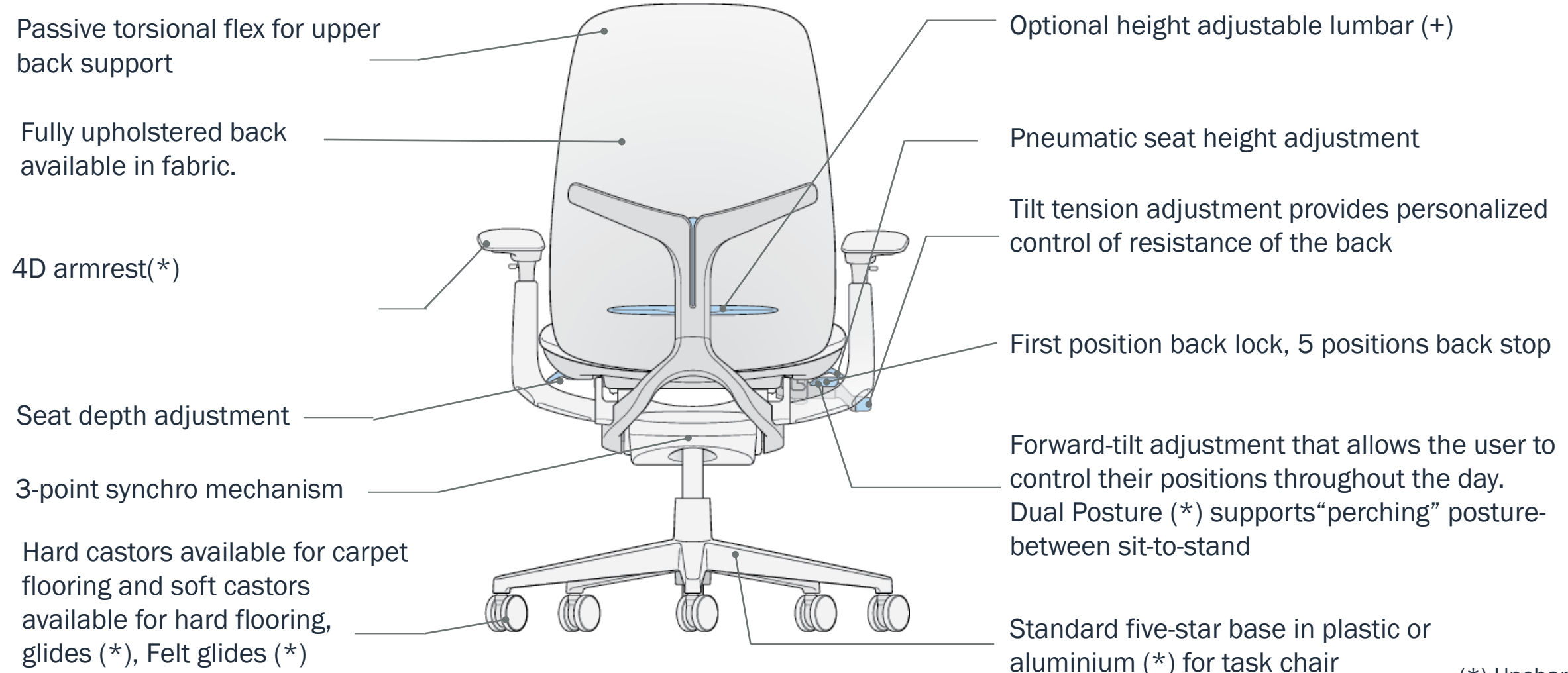


Zody LX

# Features



# Features



(\*) Upcharge

# Adjustments

## How to adjust your Zody II



[Download Zody II user guide](#)

## How to adjust your Zody LX



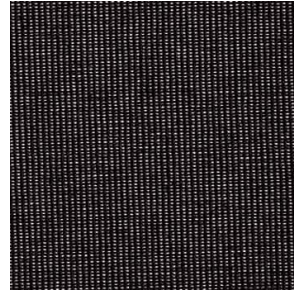
[Download Zody LX user guide](#)

# Colours and Materials

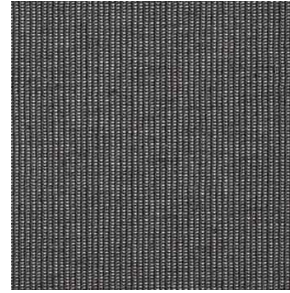


## Colours & Materials

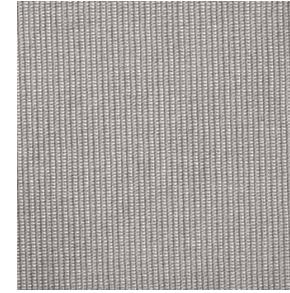
### Mesh colours



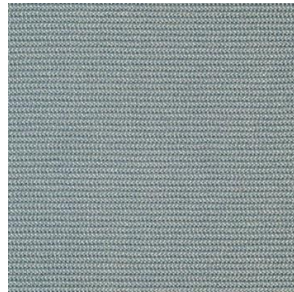
MA201 Support



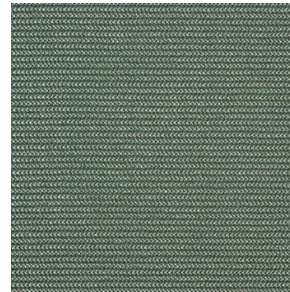
MA202 Comfort



MA223 Relax



MA209 WATER



MA204 BALSAM

# Colours & Materials

## Finishes

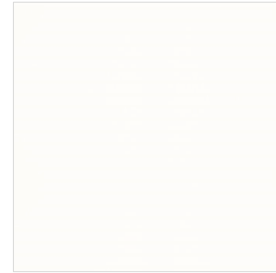
### Plastic Frame



Black



Fog



Snow

### Plastic Base



Black

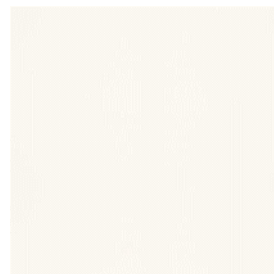


Fog

### Aluminum Base



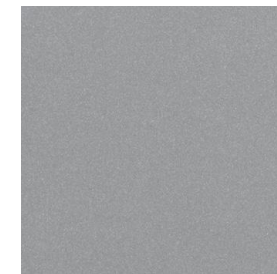
Structured Black



Structured White



Polished



Titanium



# Colours & Materials

## Colour Logic

Plastic frame (including headrest trim)	Lumbar Kit (including pad, pelvic)	Arm caps	Base	Mechanism cover	Control Levers	Castors
Black	Black	Black	Plastic Black Plastic Fog Aluminum Structured Black Aluminum Structured White Aluminum Polished Aluminum Titanium	Black	Black	60mm black hard/soft 60mm fog hard/soft 60mm white hard/soft
Fog	Black	Fog		Fog	Fog	
Snow	Black	Fog		Snow	Fog	

HAWORTH

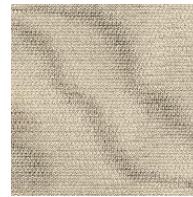
## Colours & Materials

### Zody II - Seat upholstery

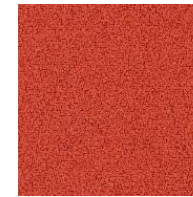
Haworth EU standard fabric collections



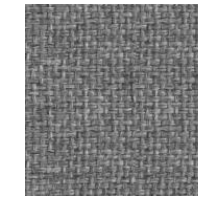
Felicity  
(Coll. 34)



Convert  
(Coll. 50)



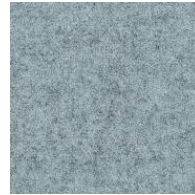
Atlantic  
(Coll. 23)



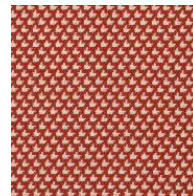
King L Kat  
(Coll. 63)



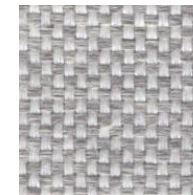
Flex  
(Coll. 22)



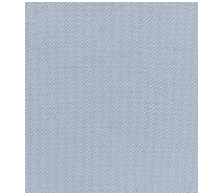
Blazer  
(Coll. 61)



Diagonale



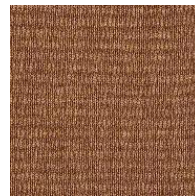
Class  
(Coll. 68)



Relate



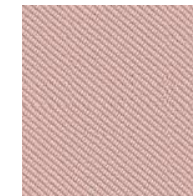
X2  
(Coll. 59)



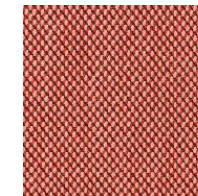
Atlas



Big Arrow



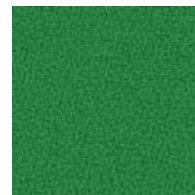
Oceanic



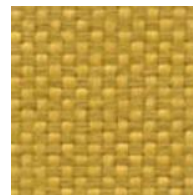
Steelcut  
Trio  
(Coll. 58)



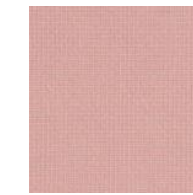
Divina  
Melange 3



Xtreme  
(Coll. 82)



Maya  
(Coll. 66)



Fame  
(Coll. 39)



Hallingdal  
65



Remix  
(Coll. 65)

HAWORTH

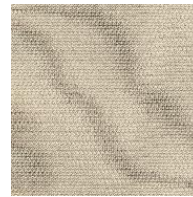
## Colours & Materials

### Zody LX - Seat & Back upholstery

Haworth EU standard fabric collections



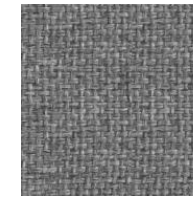
Felicity  
(Coll. 34)



Convert  
(Coll. 50)



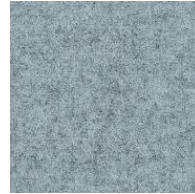
Atlantic  
(Coll. 23)



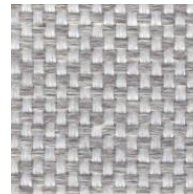
King L Kat  
(Coll. 63)



Flex  
(Coll. 22)



Blazer  
(Coll. 61)



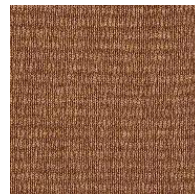
Class  
(Coll. 68)



X2  
(Coll. 59)



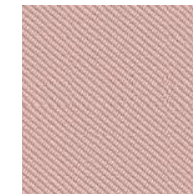
Divina  
Melange 3



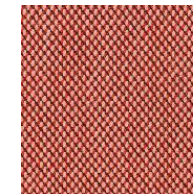
Atlas



Big Arrow



Oceanic



Steelcut  
Trio  
(Coll. 58)



Xtreme  
(Coll. 82)



Maya  
(Coll. 66)



Fame  
(Coll. 39)



Hallingdal  
65

# Sustainability & Certifications

# Sustainability & Certifications

- GS sign, type A\*
- Indoor Advantage
- PEDs



**HAWORTH** Europe | Product Environmental Data Sheet

### Zody II

Seating

A high-performing task chair. Zody blends science-based wellness and comfort with sustainability and operational design. The light-colored aesthetic and upholstery in a variety of colors mean Zody can take on any look - and work in any environment.

Zody II is manufactured in a steel facility, ISO 9001 and ISO 14001 certified facility in France and Spain. The product is made from responsibly sourced materials. The product is designed to be easy to assemble, disassemble, and transport. It has a long service life and is designed to be easy to maintain. It is a green choice for your office.

Material	Material Weight	Weight
Steel	9.3 kg	(20.5%)
Aluminum	6.7 kg	(15.6%)
Plastic	4.9 kg	(11.5%)
Fabric	0.9 kg	(2.1%)
Upholstery	0.5 kg	(1.2%)
Other	0.2 kg	(0.5%)
<b>Total</b>	<b>22.8 kg</b>	<b>(52.4%)</b>

**Recycled Content**

100% Recycled Content

**Recyclability**

100% Recyclability

We believe that our products should be safe for humans and the environment and work to reduce the carbon footprint of our products. We are committed to using materials and processes that are safe and sustainable. We are committed to using materials and processes that are safe and sustainable. We are committed to using materials and processes that are safe and sustainable.

**Zody II Material Inventory**

No Polyvinyl Chloride (PVC)  
No Hexavalent Chromium (Hexavalent Cr(VI))  
No Heavy Metals (Lead, Cadmium, Mercury, Nickel, Arsenic)  
Chlorofluorocarbons (CFCs) not used as blowing agents for foam.  
No azobenzene used in manufacturing components.  
These items are not used in manufacturing components.  
Sustainable fabric available (e.g., GRS Certified, OEKO-Tex Standard 100).

Please note that calculations of recycled content are based on the declared product configuration. Data is provided to support compliance, industry averages, or other brand-based information. Our product is to provide the most accurate recycled content calculations possible but variability in market conditions or manufacturing processes may result in higher or lower content than indicated. Depending on the available waste management infrastructure, effective recyclability can be higher.

Please note that calculations of recycled content are based on the declared product configuration. Data is provided to support compliance, industry averages, or other brand-based information. Our product is to provide the most accurate recycled content calculations possible but variability in market conditions or manufacturing processes may result in higher or lower content than indicated. Depending on the available waste management infrastructure, effective recyclability can be higher.

\*available soon

# Idea starters and Applications



HAWORTH

## Focus areas



HAWORTH

## Focus areas



HAWORTH

## Collaborative areas



HAWORTH

## Meeting rooms



HAWORTH

# Home office



HAWORTH

Home office



# Thank you