

Patch



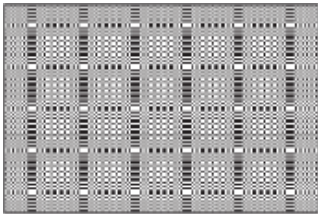
Patch rugs were born from a partnership with purpose—offering artisans in India the ability to maintain their craft during a pandemic. Patch is flat-woven using a dhurrie technique with recycled PET—appropriate for both indoor and outdoor use. Deep contrasts and geometric patterns are the hallmark of its design.

Features

- Suitable for indoor and outdoor use
- Handcrafted flat weave rug made using dhurrie technique
- Made from 100% recycled polyethylene terephthalate (PET)
- Rug thickness is approximately 6 mm
- ADA compliant

Design by

Patricia Urquiola



CONFIGURATIONS

Area Rug

Width: 300 cm

Lenght: 200 cm

Total approx. weight: 2,3 Kg/m2

FINISHES

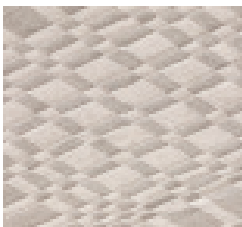
Rug Colour



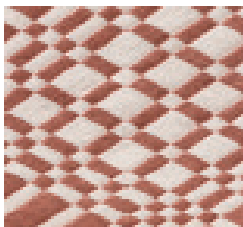
Black



Celeste



Gray



Rosado