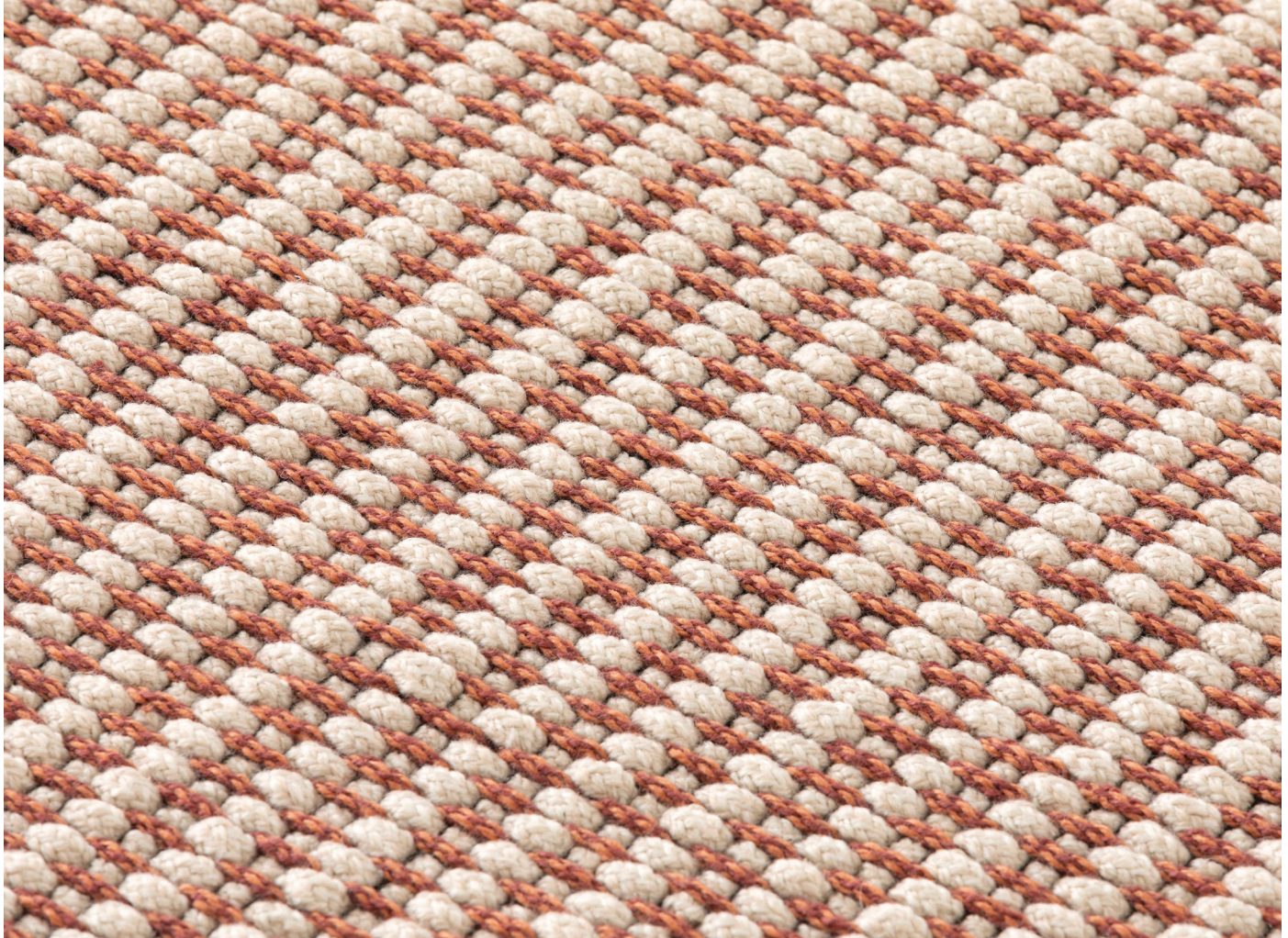


Cord



Cord rugs were born from a partnership with purpose of offering artisans in India the ability to maintain their craft during a pandemic. Cord offers subdued textures and colors in a loom textile made from recycled PET— appropriate for both indoor and outdoor use.

Features

- Suitable for indoor and outdoor use
- Handcrafted rug made using loom construction
- Made from 100% recycled polyethylene terephthalate (PET)
- Rug thickness is approximately 15 mm

Design by

Patricia Urquiola

CONFIGURATIONS



Area Rug

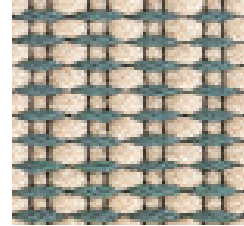
Width: 300 cm

Length: 200 cm

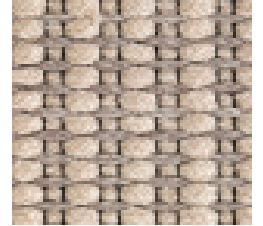
Total approx. weight: 2,5 Kg/m²

FINISHES

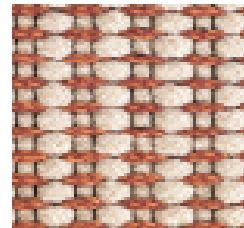
Rug Colour



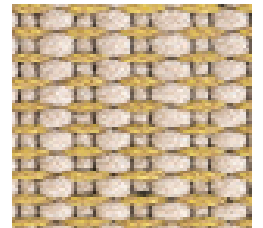
Celeste



Gray



Rosado



Yellow