

A high-angle photograph of a wooden desk. On the desk, there is a silver laptop, several sheets of paper, and various colorful sticky notes (red, blue, yellow). A white ergonomic office chair is partially visible in the background.

Work anywhere Sit everywhere

January 11, 2022

Work anywhere Sit everywhere

January 11, 2022



A photograph of a person sitting at a desk in an office, viewed from behind. The person is wearing an orange top and is seated in a modern office chair with a grey mesh backrest. On the desk, there is a laptop, a black and brown coffee cup, and a smartphone. The background shows other office cubicles and a colorful abstract painting on the wall.

Work anywhere Sit everywhere

January 11, 2022

Content

Work anywhere, Sit everywhere

What is Active Seating?

Our Active Seating Portfolio

Fabrics and Finishes

Sustainability and Seating

**The world of
work is
changing and
New Work is
happening now.**



**Technology has
freed people to
work anywhere.**

**Choice-based workplace experience:
Variety and encouragement of in-office
mobility improves effectiveness and a
positive experience.**

Gensler Research Institute, 2019

71%

**of people with choice in where
to work report a great
workplace experience**

79%

**of people in workspaces
with a variety of settings
report a great experience**

New Work means new ways...
to fit the workspace and
technology to the individual.

New Work means new ways...
to create a variety of spaces
for a variety of postures that
people can choose from.

**New Work means ...
to find your way of sitting.**

Work
Anywhere

Sit

Everywhere

**With us you can
choose the right
task chair for
your way of New
Work, no matter
where
your focus lies.**

1

Movement

2

Design

3

Ergonomics

4

Pricing

What is Active Seating?



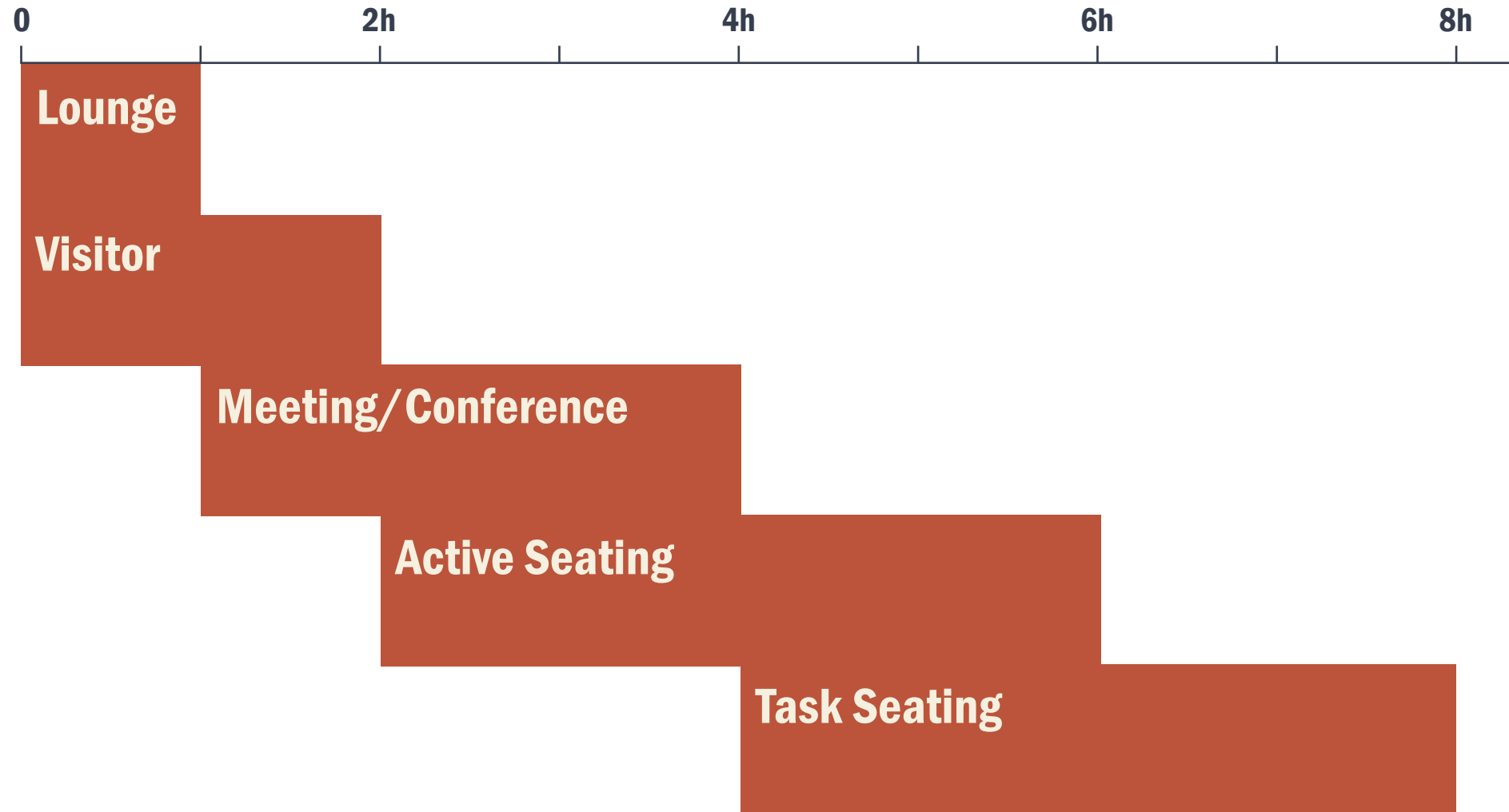
Duration

+

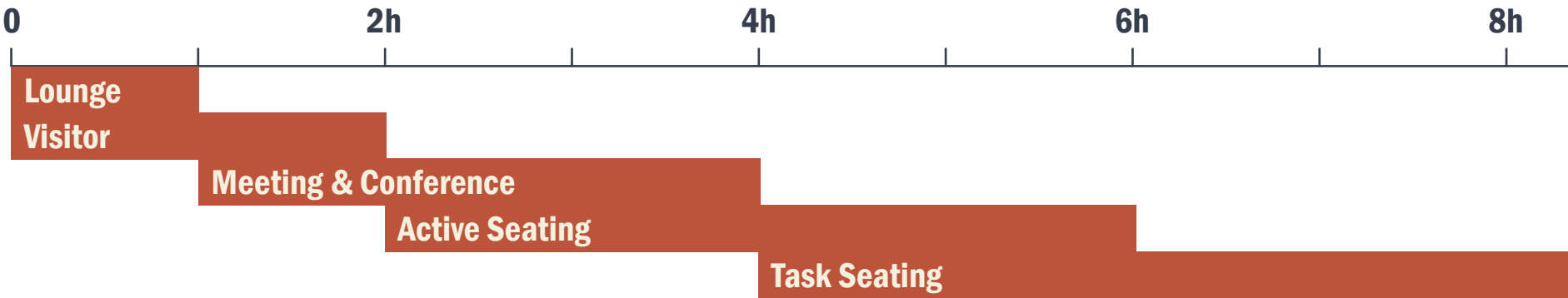


**Type of
Activity**

Sitting duration

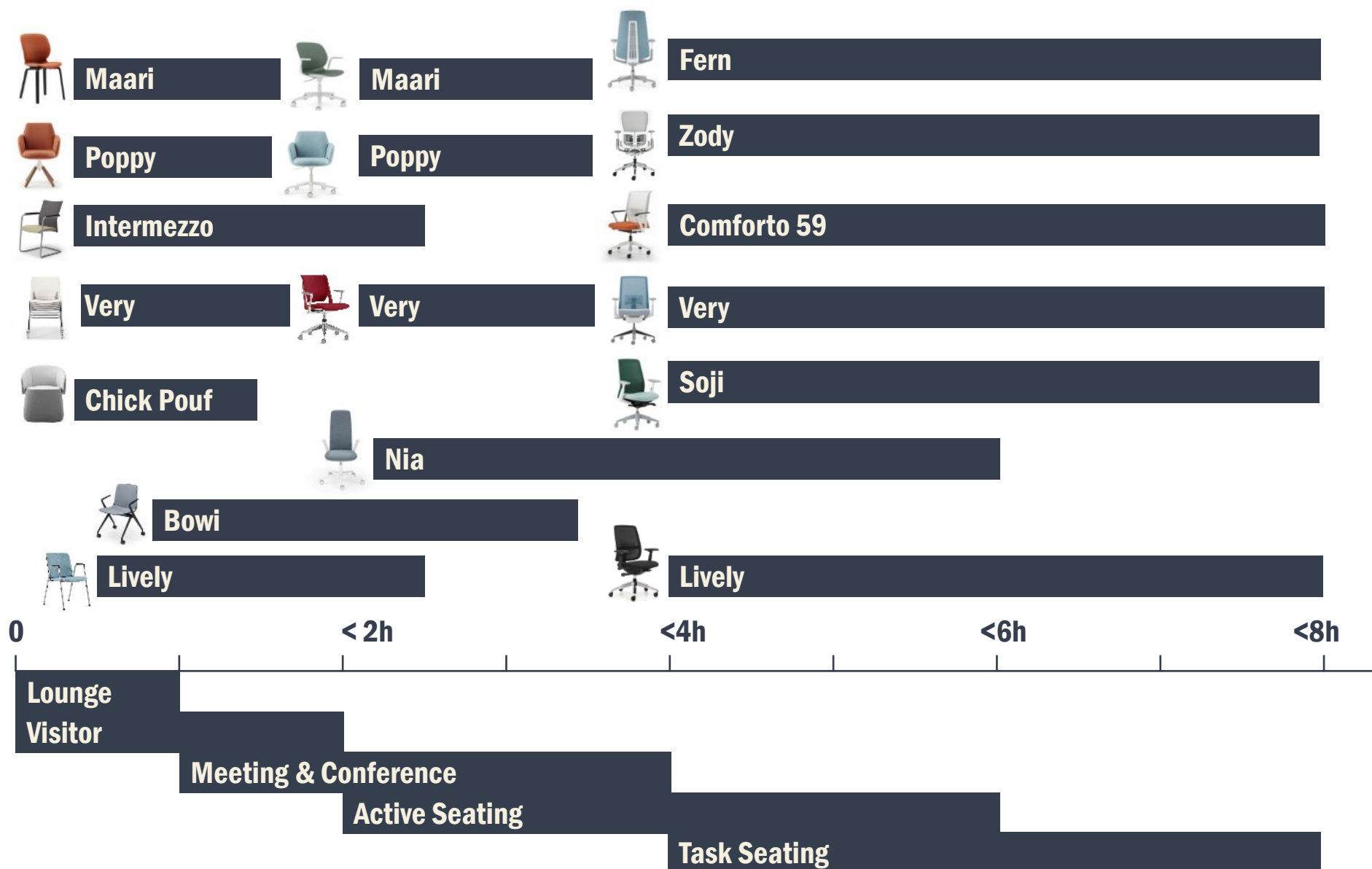


Sitting duration



How to use this overview

1. Select the application
2. Select a product
3. Click on it to get to your product.



Lounge



Poppy



Chick Pouf

0

2h

4h

6h

8h

Lounge

Visitor

Meeting & Conference

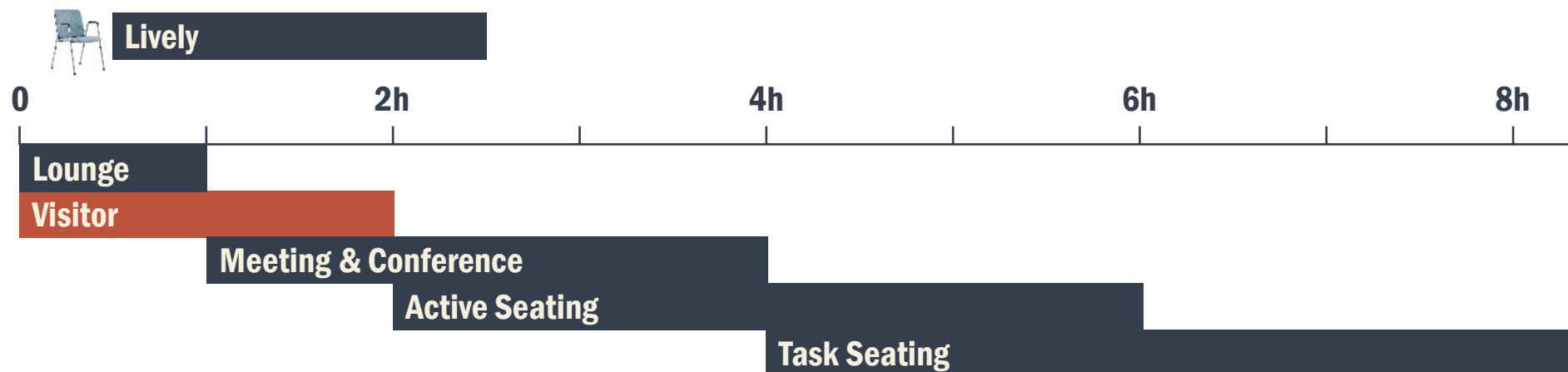
Active Seating

Task Seating

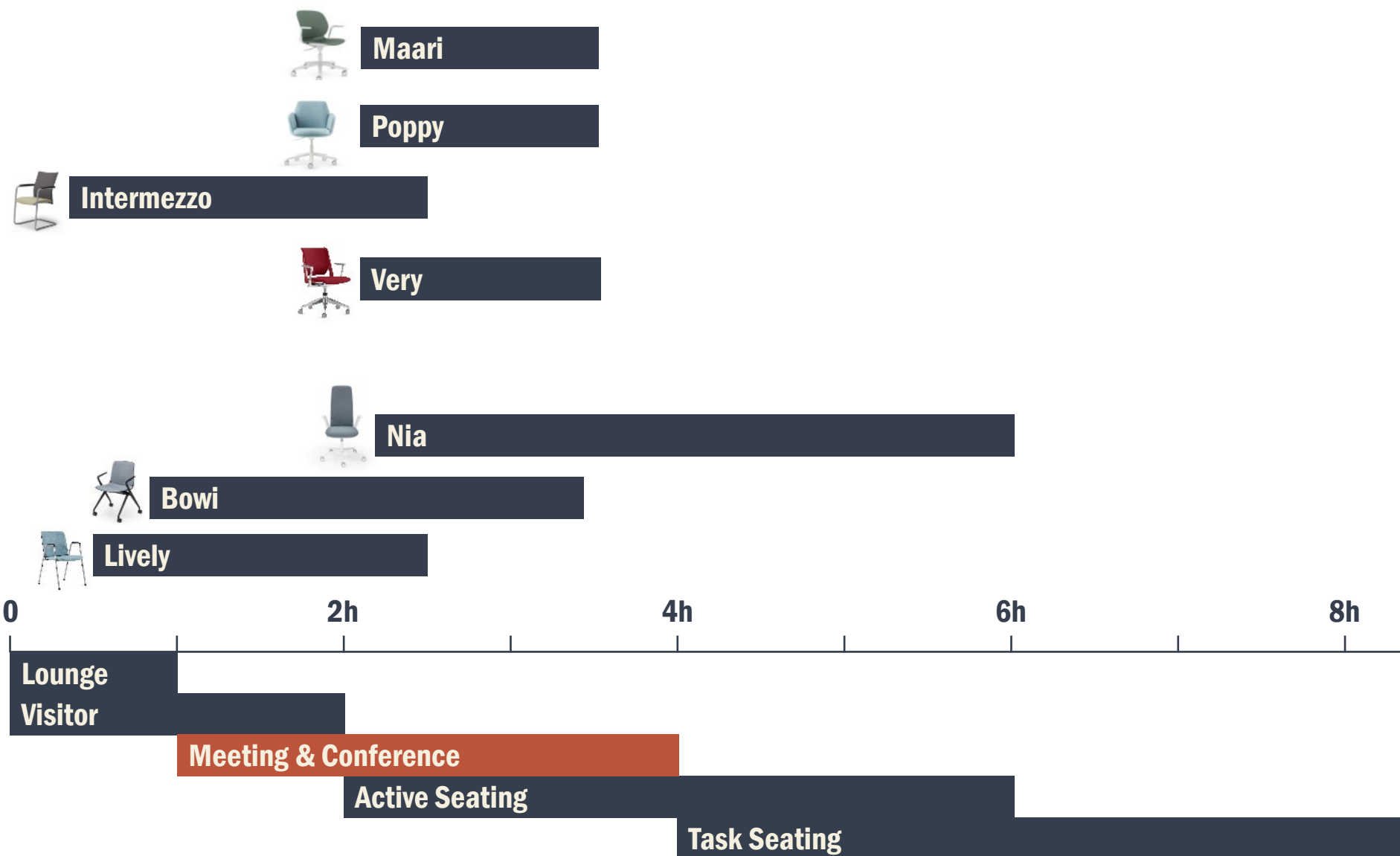


back to overview

Visitor

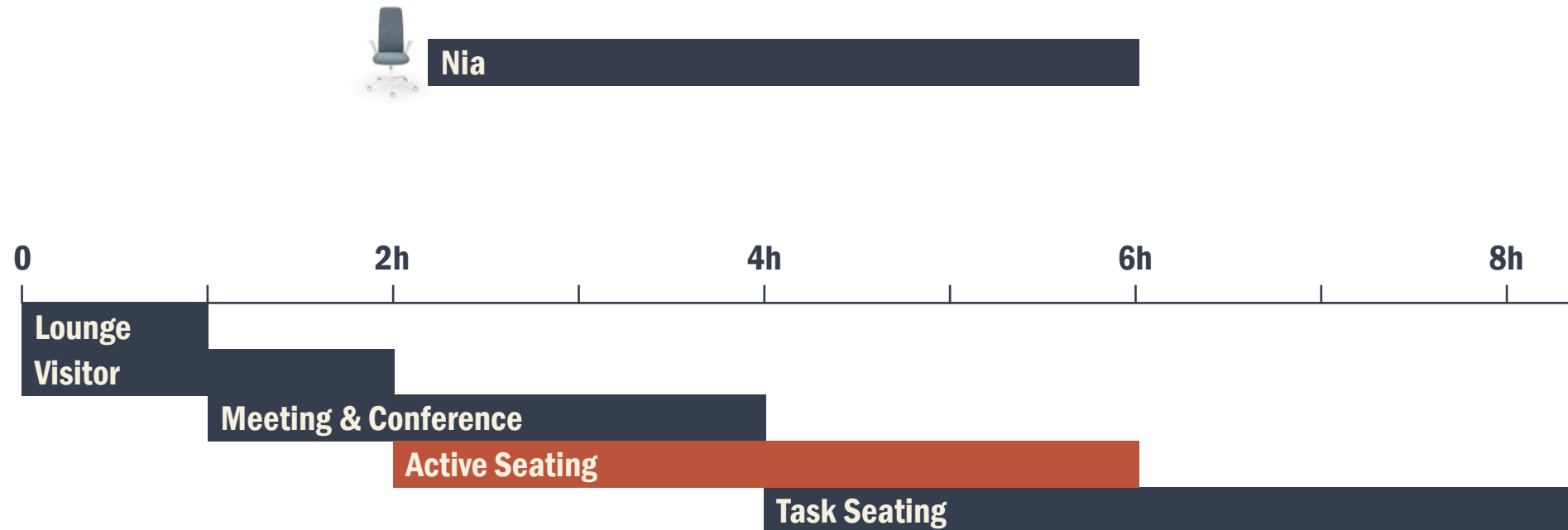


Meeting & Conference



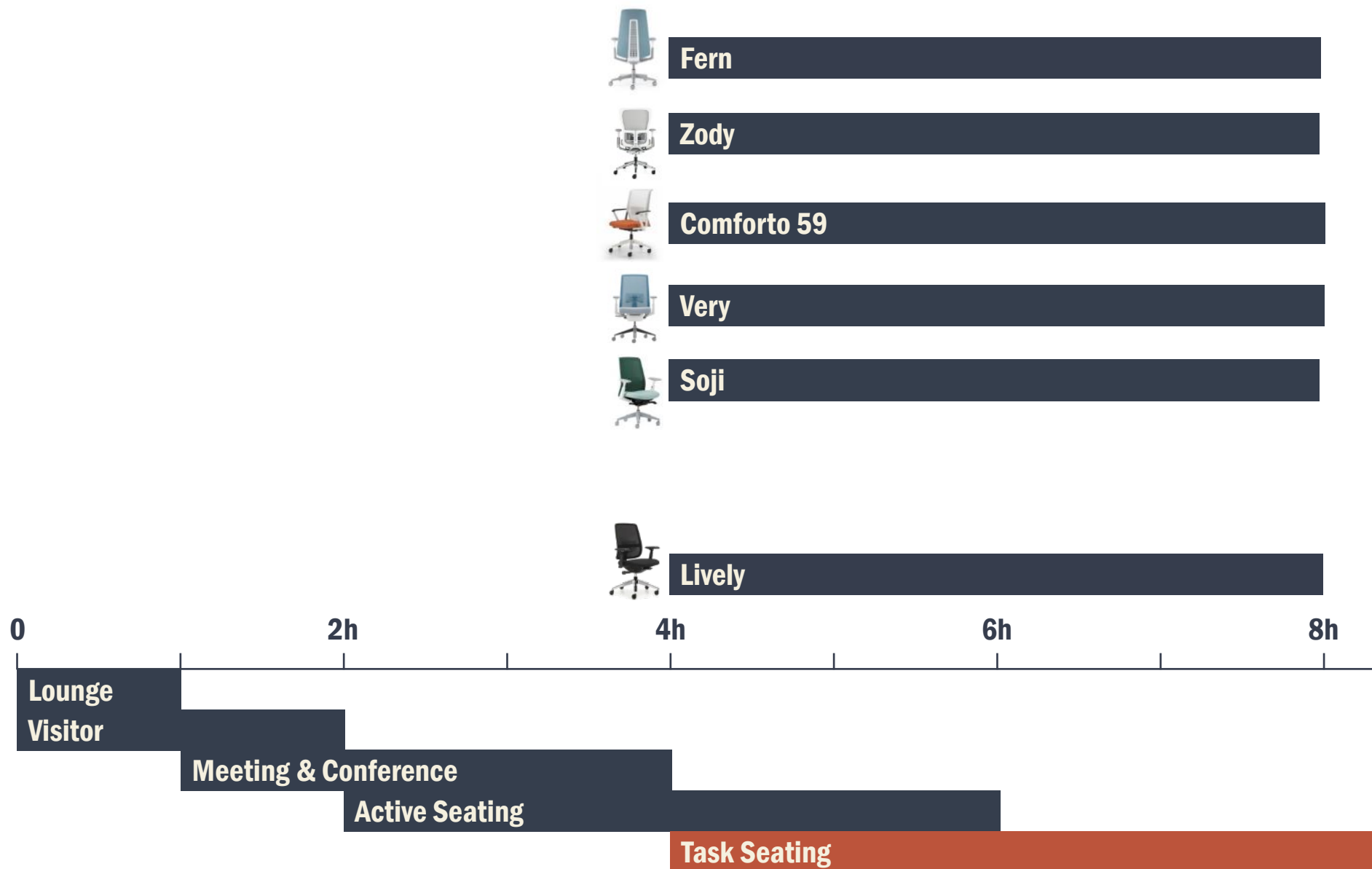
Active Seating

The first of many more to come



 [back to overview](#)

Task Seating



Best in class seating overview



Lively



Soji



Nia



Very



Comforto 59



Dynaflex



Zody



Fern

Movement



Design



Ergonomy



Pricing

€

€ €

€ €

€ €

€ €

€ € €

€ € €

€ € €

Zody

- PAL™ Back System for lumbar and pelvic support that maintains the spine's natural shape
- Asymmetric lumbar support
- Adjustable 4D armrests
- Ergonomic seat pan
- 3-point synchronised adjustment



[back to overview](#)

Zody

- PAL™ Back System for lumbar and pelvic support that maintains the spine's natural shape
- Asymmetric lumbar support
- Adjustable 4D armrests
- Ergonomic seat pan
- 3-point synchronised adjustment



Zody

Form follows science:
A high-performance task chair
blends science-based wellness
and comfort with sustainability
and award-winning
international design



[back to overview](#)



Zody

Form follows science:
A high-performance task chair
blends science-based wellness
and comfort with sustainability
and award-winning
international design



[back to overview](#)

Fern

- DESIGNED by Haworth Design Studio and ITO Design
- FERN 3-point mechanism with back-stop in 5 positions
- FORWARD TILT (optional)
- LUMBAR SUPPORT – height adjustable (optional)
- 4D ARMREST
- FLEXIBLE BACKREST instead of torsional rigidity



Fern

- DESIGNED by Haworth Design Studio and ITO Design
- FERN 3-point mechanism with back-stop in 5 positions
- FORWARD TILT (optional)
- LUMBAR SUPPORT – height adjustable (optional)
- 4D ARMREST
- FLEXIBLE BACKREST instead of torsional rigidity



[back to overview](#)

Fern

Fern provides a comfortable, engaging sitting experience that creates good feelings, keeping you balanced and centered in your chair. Its approachable design is less machine, more human, with mechanics discreetly integrated into the warm, residential aesthetic.



[back to overview](#)



Fern

Fern provides a comfortable, engaging sitting experience that creates good feelings, keeping you balanced and centered in your chair. Its approachable design is less machine, more human, with mechanics discreetly integrated into the warm, residential aesthetic.



[back to overview](#)

Fern

Fern provides a comfortable, engaging sitting experience that creates good feelings, keeping you balanced and centered in your chair. Its approachable design is less machine, more human, with mechanics discreetly integrated into the warm, residential aesthetic.



[back to overview](#)



Bowi

- Simple clean aesthetic to suit most environments
- Unique pivoting mechanism, allows easy nesting
- Cost effective
- all plastic design
- designed by brodbeck design and Haworth Design Studio



[back to overview](#)

Minimalist Design

Bowi is designed in clean simple aesthetic that compliments a range of environments, such as conference, meeting and projects rooms or cafeterias.



[back to overview](#)

Easy Nesting

Crafty mechanism allows the chair to be easily inclined and nested using minimal space, to address to the increasing need for space and flexibility.



[back to overview](#)



Budget-friendly

With all plastic construction, Bowi is designed to be cost-effective, providing a versatile seating solution at an affordable price.



[back to overview](#)



Bowi



[back to overview](#)

Comforto 59

- designed by Simon Desanta and Haworth Design Studio
- Automatic weight control mechanism: The chair automatically adjusts itself to the user's body weight and allows the user to forget that they are sitting
- Options: PAL™ asymmetric and height adjustable lumbar support, AIR-GO-PUR™ seat, 4D NPR or fixed armrests, headrest



[back to overview](#)

Comforto 59

Design and function: the Comforto 59 chair incorporates essential functionality into a sleek, clean design.



[back to overview](#)



Intermezzo

A versatile visitor chair program, suited to all classical seating applications where people come together for a period of time.



[back to overview](#)

Nia Redefining work seating

Traditional task chairs contrast the increasingly residential-themed workplace aesthetic. Nia with its slim upholstered profile and concealed mechanisms finally create a chair that compliments this aesthetic without compromising performance



[back to overview](#)

So many opportunities

Nia is designed to blend the style and comfort of lounge chair with the performance of a task chair, creating a solution for many different work settings, from meeting/conference rooms, focus work areas and collaboration zones.



[back to overview](#)

Freedom as wanted, support as needed

Nia's weight-activated mechanism and unique pivoting back accommodate and quickly adapt to users postures without complicated adjustment controls.



[back to overview](#)

Nia



[back to overview](#)



Nia



[back to overview](#)

Maari

- Its design was influenced by our knowledge of seat and back contours and Patricia Urquiola's design vision.
- Designed with a built-in level of support, Maari accommodates a broad range of users.



[back to overview](#)

Maari



[back to overview](#)

Maari

Maari lets you furnish many spaces with a family of seating — one of the largest in the market. Designed by Patricia Urquiola, Maari is based on a one-piece, delicately textured, moulded shell that's the same for all chairs. Choose any base with the same shell for a breadth of applications.



[back to overview](#)

Maari

Maari lets you furnish many spaces with a family of seating — one of the largest in the market. Designed by Patricia Urquiola, Maari is based on a one-piece, delicately textured, moulded shell that's the same for all chairs. Choose any base with the same shell for a breadth of applications.



[back to overview](#)

Maari

Maari lets you furnish many spaces with a family of seating — one of the largest in the market. Designed by Patricia Urquiola, Maari is based on a one-piece, delicately textured, moulded shell that's the same for all chairs. Choose any base with the same shell for a breadth of applications.



[back to overview](#)

Maari

Maari lets you furnish many spaces with a family of seating — one of the largest in the market. Designed by Patricia Urquiola, Maari is based on a one-piece, delicately textured, moulded shell that's the same for all chairs. Choose any base with the same shell for a breadth of applications.



Very

The Very chair's top characteristics include its universal appeal, wide range of application, high level of recyclability & fantastic scope of colour.



[back to overview](#)

Very

The Very chair's top characteristics include its universal appeal, wide range of application, high level of recyclability & fantastic scope of colour.



[back to overview](#)

Very

The Very chair's top characteristics include its universal appeal, wide range of application, high level of recyclability & fantastic scope of colour.



[back to overview](#)

Very

- DESIGNED by Michael Welsh, Nicolai Czumaj-Bront & Haworth Design Studio
- Contains 39% recycled content and up to 100% recyclable materials
- 3-point-synchronised adjustment, with or without asymmetrical lumbar support, 4D, NPR or fixed armrest, Mesh or fully upholstered back rest



Very

- DESIGNED by Michael Welsh, Nicolai Czumaj-Bront & Haworth Design Studio
- Contains 39% recycled content and up to 100% recyclable materials
- 3-point-synchronised adjustment, with or without asymmetrical lumbar support, 4D, NPR or fixed armrest, Mesh or fully upholstered back rest



Very

- DESIGNED by Michael Welsh, Nicolai Czumaj-Bront & Haworth Design Studio
- Contains 39% recycled content and up to 100% recyclable materials
- 3-point-synchronised adjustment, with or without asymmetrical lumbar support, 4D, NPR or fixed armrest, Mesh or fully upholstered back rest



[back to overview](#)



Poppy

- DESIGNED by Patricia Urquiola and Haworth Design Studio
- comfortable and cozy
- flexible and accommodating
- expressive and charming



[back to overview](#)

Poppy

Haworth worked with designer Patricia Urquiola on this contemporary lounge chair. Poppy brings the warmth of home furnishings into the office space.

Poppy is a soft, cushioned lounge seat. It can be used in a conference room, a waiting area, or even as a desk chair.



[back to overview](#)

Poppy

Haworth worked with designer Patricia Urquiola on this contemporary lounge chair. Poppy brings the warmth of home furnishings into the office space.

Poppy is a soft, cushioned lounge seat. It can be used in a conference room, a waiting area, or even as a desk chair.



[back to overview](#)

Poppy

Haworth worked with designer Patricia Urquiola on this contemporary lounge chair. Poppy brings the warmth of home furnishings into the office space.

Poppy is a soft, cushioned lounge seat. It can be used in a conference room, a waiting area, or even as a desk chair.



Poppy

Haworth worked with designer Patricia Urquiola on this contemporary lounge chair. Poppy brings the warmth of home furnishings into the office space.

Poppy is a soft, cushioned lounge seat. It can be used in a conference room, a waiting area, or even as a desk chair.



[back to overview](#)

Lively

- DESIGNED by Steve Nemeth and Haworth Design Studio
- CONTAINS: 25% recycled content and up to 100% recyclable; GREENGUARD GOLD, NF Environment and Quality Office certified
- Height adjustable lumbar support, 3D or NPR armrests, Automatic weight synchronous mechanism, seating family and a variety of colour choices
- REDDOT DESIGN AWARD winner 2013



[back to overview](#)



Lively

- DESIGNED by Steve Nemeth and Haworth Design Studio
- CONTAINS: 25% recycled content and up to 100% recyclable; GREENGUARD GOLD, NF Environment and Quality Office certified
- Height adjustable lumbar support, 3D or NPR armrests, Automatic weight synchronous mechanism, seating family and a variety of colour choices
- REDDOT DESIGN AWARD winner 2013



back to overview



Lively

- DESIGNED by Steve Nemeth and Haworth Design Studio
- CONTAINS: 25% recycled content and up to 100% recyclable; GREENGUARD GOLD, NF Environment and Quality Office certified
- Height adjustable lumbar support, 3D or NPR armrests, Automatic weight synchronous mechanism, seating family and a variety of colour choices
- REDDOT DESIGN AWARD winner 2013

◀ [back to overview](#)



Chick Pouf

Openest Chick poufs help leverage open space — small or large — by creating cozy, flexible areas that inspire people to do their best work. Easy to arrange and ready for anything, Chick poufs are at home in any setting — from individual focus and retreat areas, to collaborative and social gathering spots.



[back to overview](#)

Chick Pouf

Openest Chick poufs help leverage open space — small or large — by creating cozy, flexible areas that inspire people to do their best work. Easy to arrange and ready for anything, Chick poufs are at home in any setting — from individual focus and retreat areas, to collaborative and social gathering spots.



[back to overview](#)

Chick Pouf

- DESIGNED by Patricia Urquiola



[back to overview](#)

Chick Pouf

- DESIGNED by Patricia Urquiola



[back to overview](#)

Chick Pouf

- DESIGNED by Patricia Urquiola



[back to overview](#)



Soji

- DESIGNED by Arne Dassen & Haworth Design Studio



[back to overview](#)

Soji

Thoughtfully designed and informed by ergonomics, Soji is a highly-adjustable task chair that syncs your body and mind the second you sit down — for healthier levels of performance and well-being, no matter where you work.



[back to overview](#)



Soji

Thoughtfully designed and informed by ergonomics, Soji is a highly-adjustable task chair that syncs your body and mind the second you sit down — for healthier levels of performance and well-being, no matter where you work.



[back to overview](#)



Soji

Thoughtfully designed and informed by ergonomics, Soji is a highly-adjustable task chair that syncs your body and mind the second you sit down — for healthier levels of performance and well-being, no matter where you work.



[back to overview](#)

Soji

Thoughtfully designed and informed by ergonomics, Soji is a highly-adjustable task chair that syncs your body and mind the second you sit down — for healthier levels of performance and well-being, no matter where you work.



[back to overview](#)

Fabrics

A close-up photograph of several folded fabric swatches. The fabrics are arranged diagonally from the top-left to the bottom-right. The colors include shades of blue, green, and yellow. Some fabrics have a fine, repeating geometric pattern, while others have a more pronounced, larger-scale pattern. The lighting is soft, highlighting the texture of the materials.

Fabrics

Collection Small Arrow
by Haworth®



4LOCR
Crossbow



4LOTA
Target



4LOFL
Fletcher



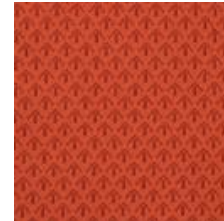
4LOQU
Quiver



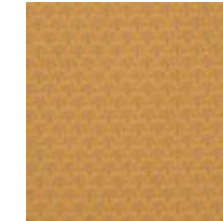
4LOST
Shaft



4LOAR
Archer



4LOBA
Barb



4LONK
Nock

Fabrics

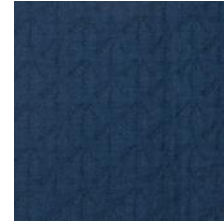
Collection Big Arrow
by Haworth®



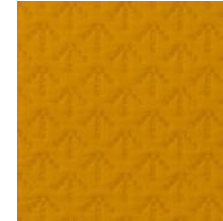
4DOBL
Blue



4DOCN
Cool Neutral



4DODB
Dark Blue



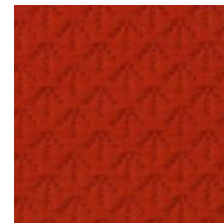
4DOGD
Gold



4DOGR
Green



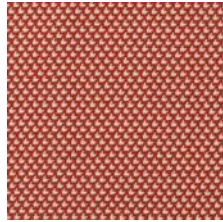
4DOMG
Medium Grey



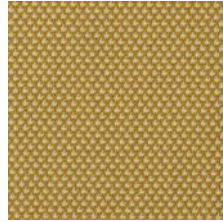
4DORE
Red

Fabrics

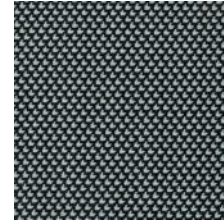
Collection Diagonale
by Haworth®



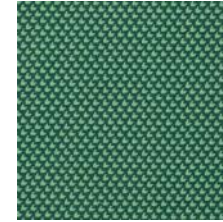
4NOBA
Bias



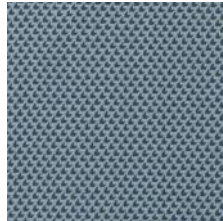
4NODA
Diamond



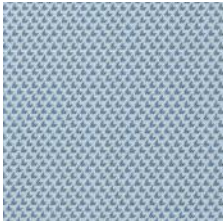
4NOSH
Slash



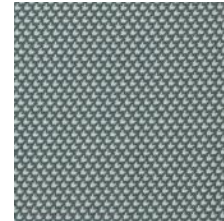
4NOST
Slant



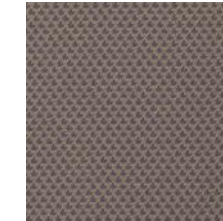
4NOCH
Chevron



4NOFE
Featherstitch



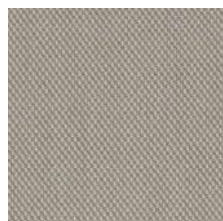
4NOMA
Matrix



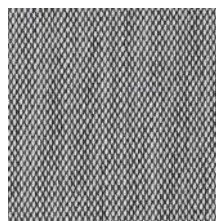
4NOHT
Half Timber

Fabrics

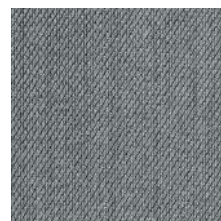
Collection Steelcut Trio
by Kvadrat®



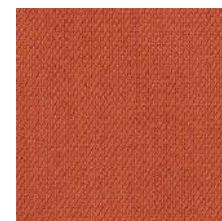
58/0205



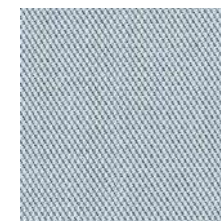
58/0124



58/0153



58/0533



58/0713



58/0645
New!



58/0946
New!



58/0383
New!



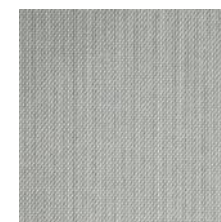
58/0453
New!



58/0515
New!



58/0253
New!



58/0113
New!

Fabrics

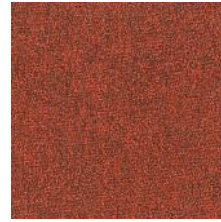
Collection 59
X2 BY CAMIRA®



59/0016



59/0012



59/0015



59/0005



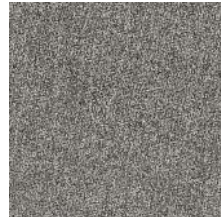
59/0002



59/0006



59/0008



59/0020



59/0019



Fabrics

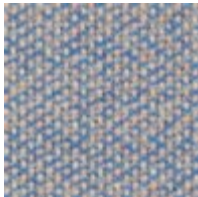
Collection Atlas
by Kvadrat®



LW-A131



LW-B151



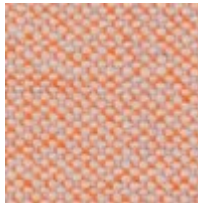
LW-D361



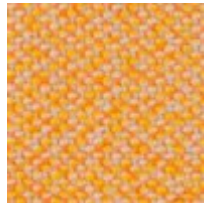
LW-E461



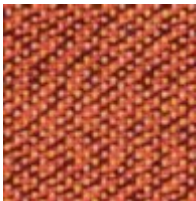
LW-T931



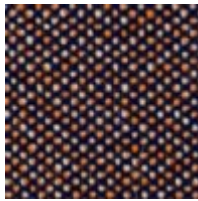
LW-G501



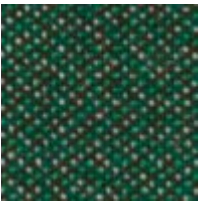
LW-H531



LW-J561



LW-K571



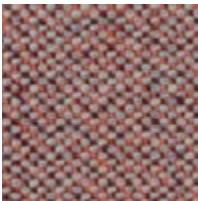
LW-V951



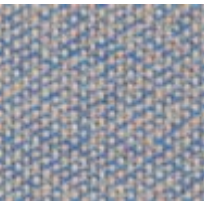
LW-F471



LW-N651



LW-L621



LW-M631



LW-C181



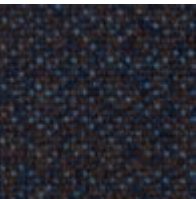
LW-P671



LW-Q771



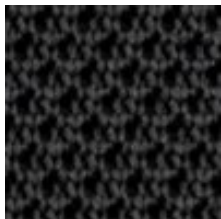
LW-R861



LW-S881

Fabrics

Collection Soji Knit Mesh
BY CAMIRA®



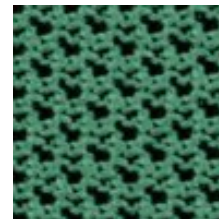
XT001
Carbon



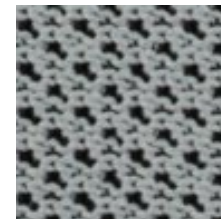
XT002
Cayenne



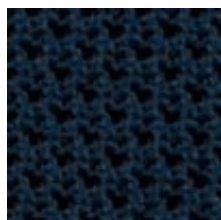
XT003
Clay



XT004
Juniper



XT005
Mist



XT006
Navy

Fabrics Overview

Fabric																						
Colour Code	F0		F1						F2							F3		F5			F6	
	Convert	Felicity	Flex	Atlantic	Maya	King	Xtreme plus	X2	Fame	Skai Evida	Blazer / Cotswold	Remix	Class	Small Arrow	Diagonale	Big Arrow	Atlas	Steelcut Trio	Soji Knit	Serie 100	Royal	
Colour collection	50	34	22	23	66	63	82	59	39	51	61	65	68	Small Arrow	Diagonale	Big Arrow	Atlas	58	XT	98 Leather	97 Leather	Noble Performance Suite
Task/Active Seating																						
Nia	•	•			•	•	•				•		•	•	•		•	•				
Fern	•*	•*	•*	•*	•*	•*	•*	•*	•*	•*	•*	•*	•*	•*	•*	•*		•*		•	•	
Zody Task	•	•	•	•	•	•	•	•	•	•	•	•	•	•	•	•		•		•	•	
Soji	•	•			•	•	•				•		•	•	•	•	•	•	•			
Comforto 59	•	•	•	•	•	•	•	•	•	•		•	•	•	•	•		•		•	•	
Very Task	•	•	•	•	•	•	•	•	•	•	•	•	•	•	•	•		•		•	•	
Comforto 55	•	•	•	•	•	•	•	•	•	•	•	•	•					•		•	•	
Lively Task	•	•	•	•	•	•	•	•	•	•	•	•	•	•	•	•		•		•	•	
Conference / Side / Seminar Seating																						
Bowi	•	•			•	•	•			•	•	•	•	•	•		•	•				
Zody Visitor	•	•	•	•	•	•	•	•	•	•	•	•	•	•	•			•		•	•	
Comforto 59 Visitor	•	•	•	•	•	•	•	•	•	•	•	•	•	•	•	•*		•		•	•	
Very 6210 - 6230	•	•	•	•	•	•	•	•	•	•	•	•	•	•	•			•		•	•	
Very 6240/6250 (Wire)	•	•	•	•	•	•	•	•	•	•	•	•	•	•	•			•		•	•	
Intermezzo	•	•	•	•	•	•	•	•	•	•	•	•	•	•	•	•*		•		•	•	
Lively Visitor	•	•	•	•	•	•	•	•	•	•	•	•	•	•	•			•		•	•	
Comforto 01	•	•	•	•	•	•	•	•	•	•	•	•	•	•	•	•		•		•	•	
Lounge																						
Poppy					•	•					•		•	•	•	•						
Openest Feather					•	•					•		•									
Openest Chick Pouf					•	•					•		•	•	•	•						
Riverbend	•	•			•	•	•			•	•	•	•	•	•	•		•				
Windowseat											•											

*only legs/seat

**only shelves

Sustainability

Making the world better is one of Haworth's fundamental, company-wide values. This philosophy guides our members every day as we work to strengthen the communities where we live and work. Through our research, development, and the actualisation of creative, sustainable solutions, we help protect and restore the environment, support and strengthen global communities, create economic value, and inspire well-being—now and for the future.



Sustainability

Our sustainable principles can be observed in our seating portfolio with the following examples:

- Product Environmental Data Sheets (PEDS) to provide product-related sustainability information and supported by independent sustainability certification such as FEMB Level and NF Environment
- Indoor air quality performance certified according to GREENGUARD™ GOLD or Indoor Advantage™ Gold
- Almost all seating fabric collections are certified either OEKO-TEX or EU Ecolabel
- Most metal parts, Haworth uses powder painting, a VOC-free finishing process that creates low amounts of waste. Through a transition to water-based finishes and powder-coat paints, we've realized an over 90% reduction in VOC emissions from our processes since 2007

Our responsibility also extends beyond just the products we manufacture with Haworth Global awarded EcoVadis Gold for Corporate Social Responsibility Excellence, amongst the top 5% of manufacturers assessed by EcoVadis

HAWORTH

Thank you!