



HAWORTH

# European Colour Collection

**Fabrics & Finishes**  
**Overview**

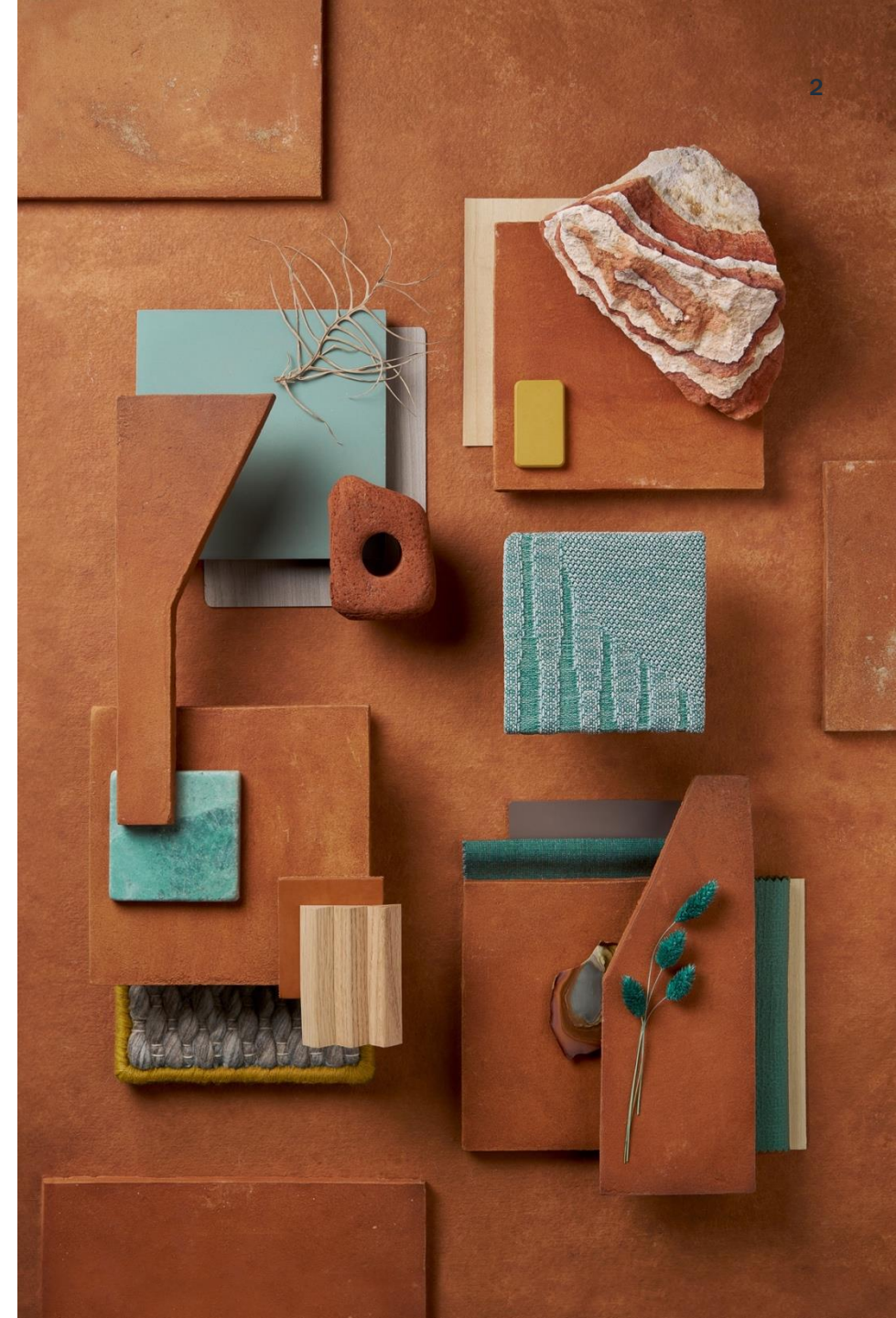
2025 Q1



## Overview

Haworth is committed to keeping our colour, material, and finish offerings fresh and current, providing you with:

- Offerings that are designed to complement a variety of organizational cultures and support changing workstyle environments.
- The latest high-performance textiles and an inspiring global palette that enhance our new products and design direction.
- Design freedom to mix, match, layer, and coordinate different colours, materials, and finishes, giving you the tools to fully express the personality of a company's brand.
- Fun, playful, and human-centric options for today's evolving workspaces.



## Our Sustainability Commitment

Haworth's latest material and finish offerings have the durability and sustainability our customers expect.

Using recycled fibers, as well as water-based paints and stains, we provide environmental solutions wherever possible.

Sustainability features of our fabric collections include:

- OekoTex Standard 100 certified fabrics
- EU Ecolabel certified fabrics
- Cradle-2-cradle certified fabrics
- Second nature and GRS recycled fabrics
- Fabrics made of Ocean plastic



## Our Partners

The Haworth Colour Collection is designed with the philosophy that our fabrics and finishes are offered broadly across our various product lines (unless constrained by manufacturing processes) allowing designers to blend products simply and easily.

At Haworth we ensure our fabrics satisfy the highest quality standards so they look and feel good for years on end. Needless to say, we offer a vast variety of materials and colours for all kinds of furniture.

The broad spectrum of surfaces we offer at Haworth ranges from real wood and veneer to melamine and glass, giving you every opportunity to select the right solution to suit your specific requirements.

We create partnerships with companies that conform to our values and ensure added value for our customers.

ANTICCUIR



**camira**

FIDIVI\*

**Gabriel**<sup>®</sup>



**kvadrat**



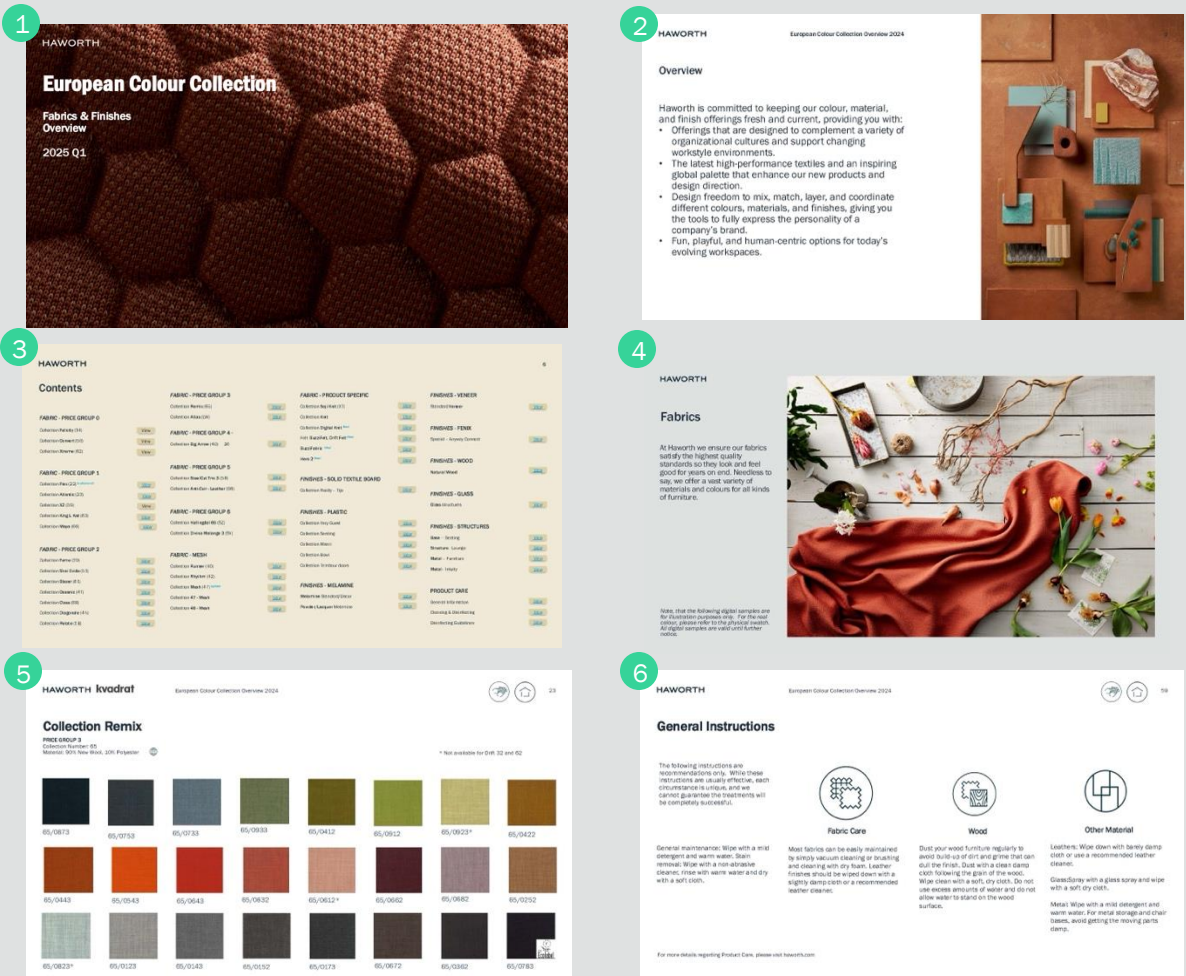


# European Colour Collection Overview

## How to use this guide

The following overview explains how information is organized within this catalogue.

- 1 Front Cover  
Includes title and date of most recent update
- 2 Information Page
- 3 Table of Contents/Overview  
Table of contents with page numbers and direct links Click on **View** button to see each collection then navigate back to TOC page by clicking the home icon.
- 4 Section Pages
- 5 Collection Pages  
Each page contains the following:
  - Provider/Manufacturer logo
  - Icon that links back to **Table of Contents** page
  - Icon that links to **Cleaning & Disinfecting** pages
  - Collection Name
  - Price Group Information
  - Collection Number
  - Material information
  - Colour Swatches with appropriate colour codes
  - Material Classifications
- 6 Additional Information  
Product Care Instructions and Disinfecting



Contents


FABRIC - PRICE GROUP 0

Collection <b>Felicity</b> (34)	<a href="#">View</a>
Collection <b>Convert</b> (50)	<a href="#">View</a>
Collection <b>Xtreme</b> (82)	<a href="#">View</a>

FABRIC - PRICE GROUP 1

Collection <b>Atlantic</b> (2)	<a href="#">View</a>
Collection <b>X2</b> (59)	<a href="#">View</a>
Collection <b>King L Kat</b> (63)	<a href="#">View</a>
Collection <b>Maya</b> (66)	<a href="#">View</a>

FABRIC - PRICE GROUP 2

Collection <b>Fame</b> (39)	<a href="#">View</a>
Collection <b>Skai Evida</b> (51)	<a href="#">View</a>
Collection <b>Blazer</b> (61)	<a href="#">View</a>
Collection <b>Oceanic</b> (4T) 	<a href="#">View</a>
Collection <b>Class</b> (68)	<a href="#">View</a>
Collection <b>Diagonale</b> (4N)	<a href="#">View</a>
Collection <b>Relate</b> (1B) 	<a href="#">View</a>

FABRIC - PRICE GROUP 3

Collection <b>Remix</b> (65) 	<a href="#">View</a>
Collection <b>Atlas</b> (LW) 	<a href="#">View</a>



FABRIC - PRICE GROUP 4

Collection <b>Big Arrow</b> (4D)	<a href="#">View</a>
----------------------------------	----------------------

FABRIC - PRICE GROUP 5

Collection <b>SteelCut Trio 3</b> (58) 	<a href="#">View</a>
Collection <b>Anti-Cuir - Leather</b> (98)	<a href="#">View</a>





FABRIC - PRICE GROUP 6

Collection <b>Hallingdal 65</b> (SZ) 	<a href="#">View</a>
Collection <b>Divina Melange 3</b> (SV) 	<a href="#">View</a>

FABRIC - MESH

Collection <b>Runner</b> (40)	<a href="#">View</a>
Collection <b>Rhythm</b> (42)	<a href="#">View</a>
Collection <b>Mesh</b> (47) <small>Update</small>	<a href="#">View</a>
Collection <b>47 - Mesh</b>	<a href="#">View</a>
Collection <b>48 - Mesh</b>	<a href="#">View</a>

FABRIC - PRODUCT SPECIFIC

Collection <b>Soji Knit</b> (XT)	<a href="#">View</a>
Collection <b>Knit</b> 	<a href="#">View</a>
Collection <b>Fern Digital Knit</b> <small>New</small>	<a href="#">View</a>
Felt- <b>BuzziFelt</b> , <b>Drift Felt</b> <small>New</small> 	<a href="#">View</a>
<b>BuzziFabric</b> <small>New</small> 	<a href="#">View</a>
<b>Hero 2</b> <small>New</small> 	<a href="#">View</a>

FINISHES - SOLID TEXTILE BOARD

Collection Really – Tijo	<a href="#">View</a>
--------------------------	----------------------

FINISHES - PLASTIC

Collection Very Guest	<a href="#">View</a>
Collection Seating	<a href="#">View</a>
Collection Maari	<a href="#">View</a>
Collection Bowi	<a href="#">View</a>
Collection Tambour doors	<a href="#">View</a>

FINISHES - MELAMINE

<b>Melamine</b> Standard/Decor	<a href="#">View</a>
--------------------------------	----------------------

FINISHES - VENEER

Standard <b>Veneer</b>	<a href="#">View</a>
------------------------	----------------------

FINISHES - FENIX

Special – Anyway Connect	<a href="#">View</a>
--------------------------	----------------------

FINISHES - WOOD

Natural Wood	<a href="#">View</a>
--------------	----------------------

FINISHES - GLASS

Glass structures	<a href="#">View</a>
------------------	----------------------

FINISHES - STRUCTURES

<b>Base/structure</b> – Seating	<a href="#">View</a>
<b>Base /Structure</b> - Lounge	<a href="#">View</a>
<b>Metal</b> – Furniture	<a href="#">View</a>
<b>Metal</b> - Intuity	<a href="#">View</a>

PRODUCT CARE

General Instructions	<a href="#">View</a>
Cleaning & Disinfecting	<a href="#">View</a>



HAWORTH

## Fabrics

At Haworth we ensure our fabrics satisfy the highest quality standards so they look and feel good for years on end. Needless to say, we offer a vast variety of materials and colours for all kinds of furniture.

*Note, that the following digital samples are for illustration purposes only. For the real colour, please refer to the physical swatch. All digital samples are valid until further notice.*







# Collection Felicity

## PRICE GROUP 0

Collection Number: 34

Material: 100% Polyester, recycled

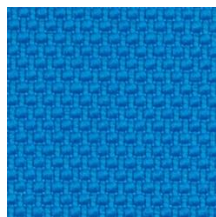
*Colours exclusive to Haworth*



34/0071



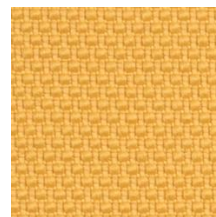
34/0077\*



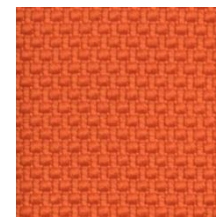
34/0076



34/0091



34/0050\*



34/0063



34/0066



34/0021\*



34/0022\*



34/0015\*



34/0010



34/0014

\* Not available for Drift 32 and Drift 62







# Collection Convert

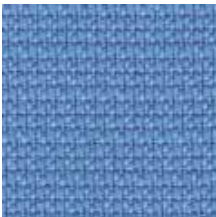
PRICE GROUP 0

Collection Number: 50

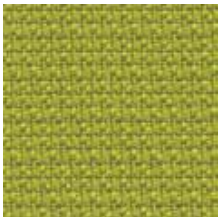
Material: 100% Polyester FR, recycled



50/0303



50/0351



50/0451



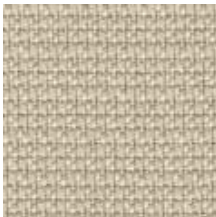
50/0051\*



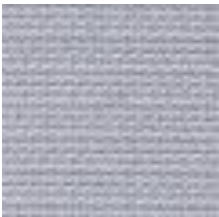
50/0201



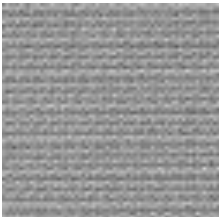
50/0501\*



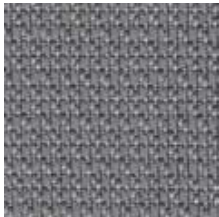
50/0503



50/0601



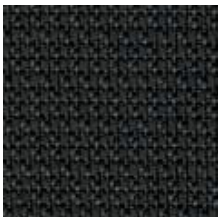
50/0602



50/0603



50/0552



50/0651

\* Not available for Drift 32





# Collection Xtreme

PRICE GROUP 0  
Collection Number: 82  
Material: 100% Polyester Xtreme Fr, recycled



82/0026



82/0171



82/0005



82/0073



82/0074



82/0159



82/0156



82/0096



82/0072\*



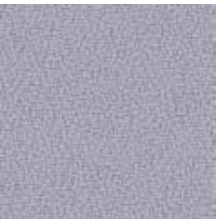
82/0076



82/0108\*



82/0173\*



82/0094



82/0141



82/0172

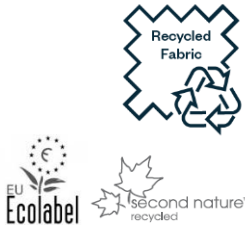


82/0046



82/0009

\* Not available for Drift 32 and Drift 62







## Collection Atlantic

### PRICE GROUP 1

Collection Number: 23

Material: 100% Polyester



23/7043



23/6057



23/0143



23/6125



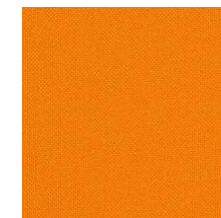
23/6063



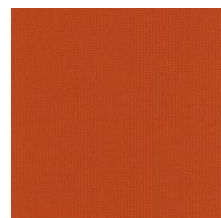
23/2048



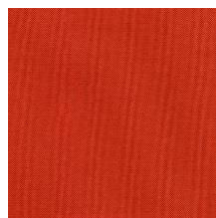
23/8054



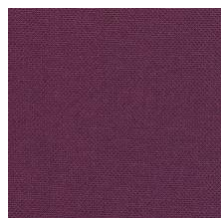
23/3055 \*\*



23/3034



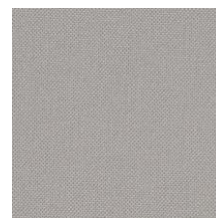
23/4093



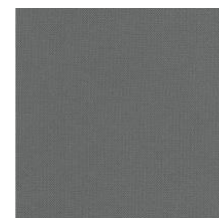
23/5037



23/5075



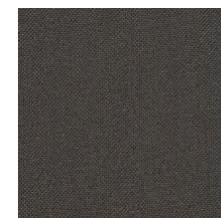
23/0141\*



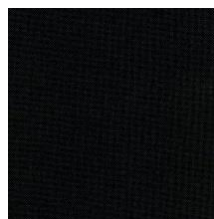
23/0011\*\*



23/0025



23/0142



23/0999

\*Not available for Drift 32 and Drift 62

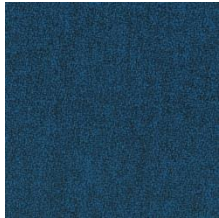
\*\* Not available for Drift 32





# Collection X2

PRICE GROUP 1  
Collection Number: 59  
Material: 75% Post-Consumer Recycled Polyester, 25% Textile to Textile Recycled Polyester



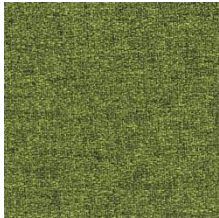
59/0008



59/0002



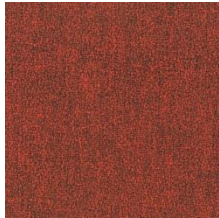
59/0006



59/0005



59/0016



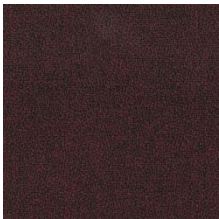
59/0015



59/0019



59/0020



59/0012







## Collection King L Kat

### PRICE GROUP 1

Collection Number: 63

Material: 100% Polyester Trevira CS



63/6052



63/6091



63/7022



63/7019



63/3030



63/3005



63/3082



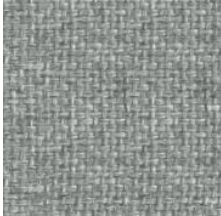
63/4021



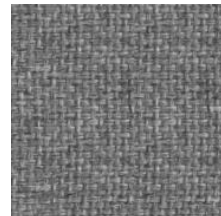
63/1025



63/1008



63/8032



63/8006

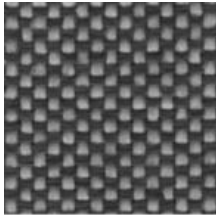


# Collection Maya

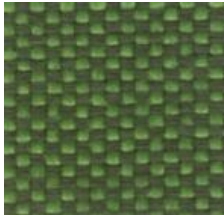
PRICE GROUP 1  
Collection Number: 66  
Material: 100% Polyester Trevira CS



66/9604



66/9803



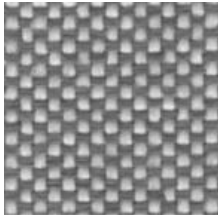
66/9704



66/9309



66/9404



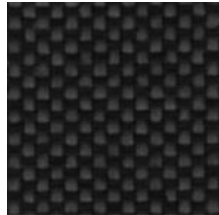
66/9107



66/9212



66/9228



66/9805







# Collection Fame

PRICE GROUP 2

Collection Number: 39  
Material: 95% NZ Wool, 5% Polyamide



39/7005



39/6133



39/7068



39/8146



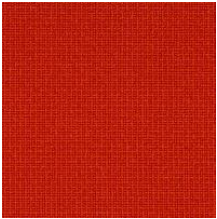
39/8035



39/8147



39/2068



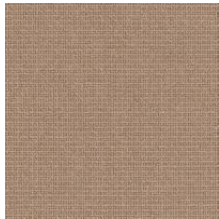
39/3078



39/4089



39/4169



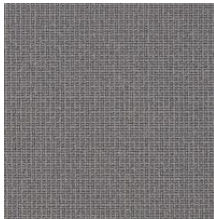
39/1003



39/0005



39/1135



39/0078



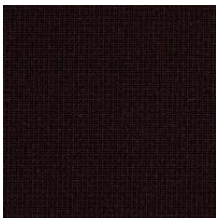
39/0003



39/1133



39/0999

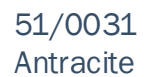
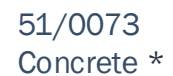
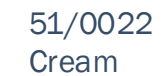
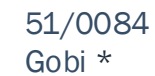
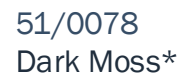
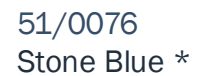


39/1044

## PRICE GROUP 2

Collection Number: 51

Material: 50% Renewable raw materials + 30% Natural based raw materials + 20% Raw materials based on crude oil







# Collection Blazer

PRICE GROUP 2  
Collection Number: 61  
Material: 100% New Wool



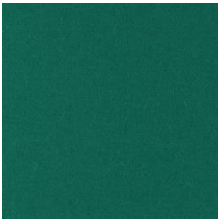
61/003B



61/001W



61/002Z



61/003A



61/0082



61/0090



61/0039



61/002T



61/0028



61/002Q



61/001R



61/0030

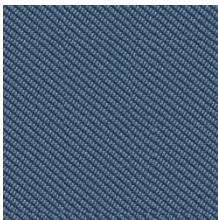


# Collection Oceanic

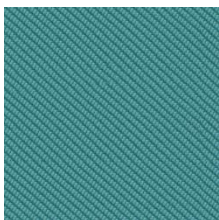
PRICE GROUP 2  
Collection Number: 4T  
Material: 100% post-consumer recycled polyester, including 50% SEAQUAL® YARN



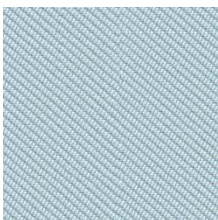
4TOAT  
Atoll



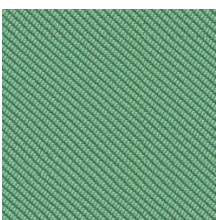
4TONP  
Neptune



4TOJT  
Jetsam



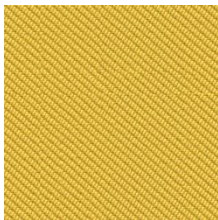
4TOGL  
Gulf



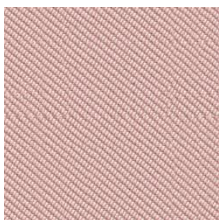
4TOSE  
Sea



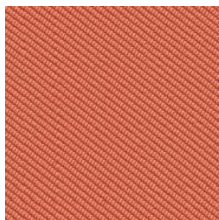
4TOCS  
Coast



4TOBR  
Barrier



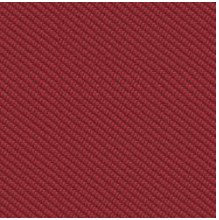
4TOSF  
Seafarer



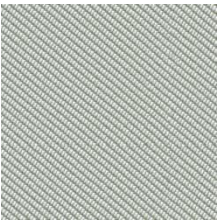
4TOCR  
Coral



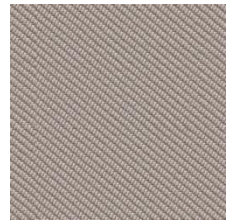
4TOAC  
Aquatic



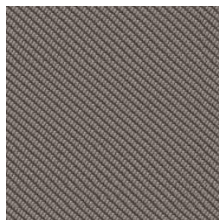
4TOAB  
Abyss



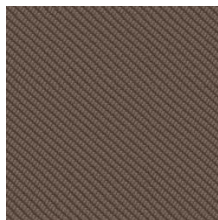
4TOPD  
Paddle



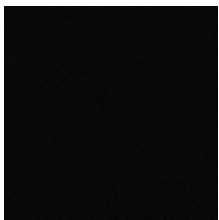
4TORP  
Riptide



4TOBY  
Bay



4TOSH  
Shore



4TOFL  
Flotsam



SEAQUAL  
INITIATIVE







# Collection Class

PRICE GROUP 2  
Collection Number: 68  
Material: 100% Polyester Trevira CS



68/9605



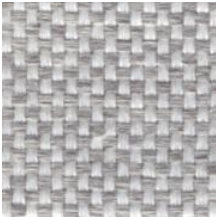
68/9705



68/9702



68/9404



68/9109



68/9252

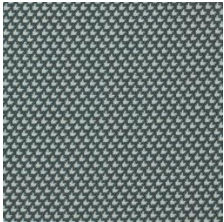


68/9805

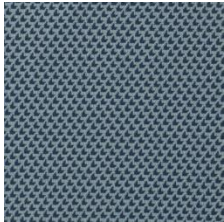


# Collection Diagonale

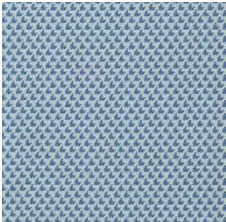
PRICE GROUP 2  
Collection Number: 4N  
Material: 100% Polyester  
*Designed by Patricia Urquiola exclusively for Haworth*



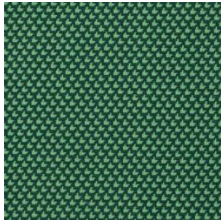
4NOMA  
Matrix



4NOCH  
Chevron



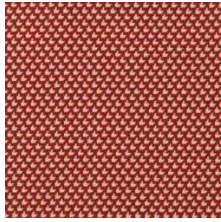
4NOFE  
Featherstitch



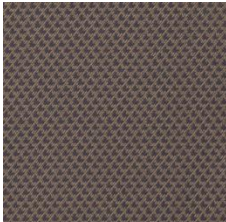
4NOST  
Slant



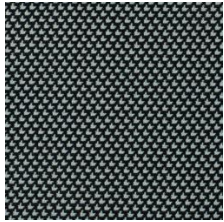
4NODA  
Diamond



4NOBA  
Bias



4NOHT  
Half Timber




4NOSH  
Slash

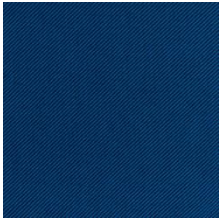




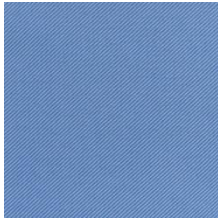
# Collection Relate

PRICE GROUP 2

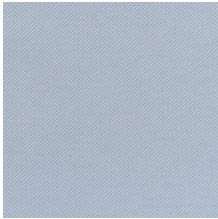
Collection Number: 1B  
Material: 100% Trevira CS 



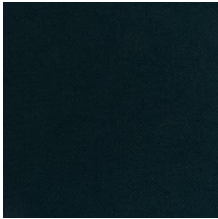
1B-881



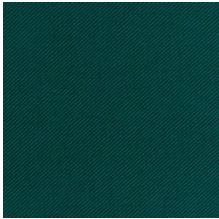
1B-741



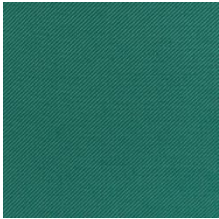
1B-711\*



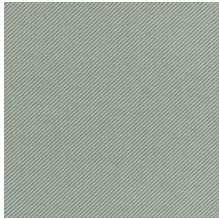
1B-991



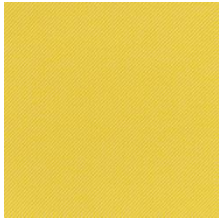
1B-981



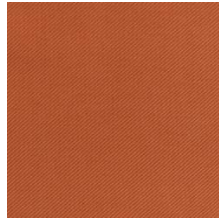
1B-961



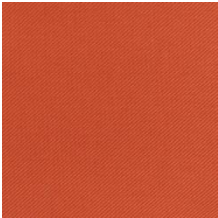
1B-921\*



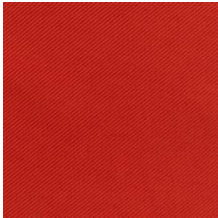
1B-431\*



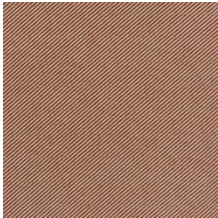
1B-461



1B-561



1B-641



1B-341



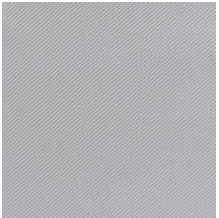
1B-441



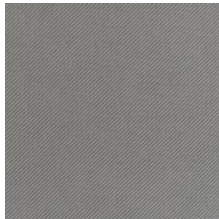
1B-271



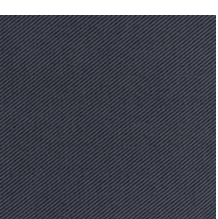
1B-381



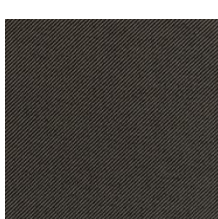
1B-121\*



1B-151



1B-171



1B-181



1B-791

\* Not available for Drift 32, Drift 62 and Nia





Collection Remix

PRICE GROUP 3

Collection Number: 65

Material: 90% New Wool, 10% Polyester



\* Not available for Drift 32 and 62



65/0873



65/0753



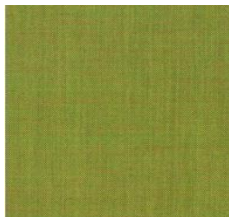
65/0733



65/0933



65/0412



65/0912



65/0923\*



65/0422



65/0443



65/0543



65/0643



65/0632



65/0612\*



65/0662



65/0682



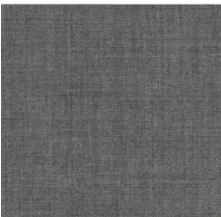
65/0252



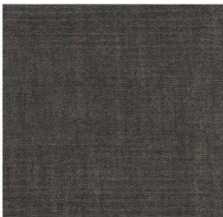
65/0823\*



65/0123



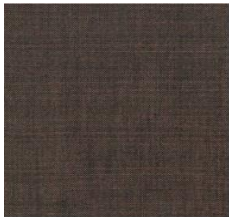
65/0143



65/0152



65/0173



65/0672



65/0362



65/0783





Collection Atlas

PRICE GROUP 3

Collection Number: LW

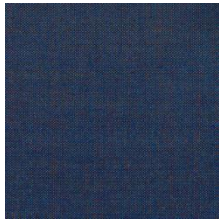
Material: 90% Wool,10% Nylon



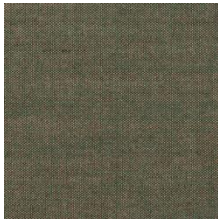
LW - S881



LW - Q771



LW - R861



LW - T931



LW - V951



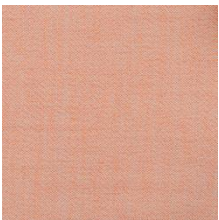
LW - H531



LW - E461



LW - N651



LW - G501



LW - J561



LW - F471



LW - L621



LW - P671



LW - K571



LW - M631



LW - A131



LW - B151



LW - D361



LW - C181



# Collection Big Arrow

PRICE GROUP 4  
Collection Number: 4D  
Material: 80% Polyester, 20% Trevira CS  
*Designed by Patricia Urquiola exclusively for Haworth*



4DODB  
Dark Blue



4DOBL  
Blue



4DOGR  
Green



4DOGD  
Gold



4DORE  
Red



4DOCN  
Cool Neutral



4DOMG  
Medium Grey





# Collection SteelCut Trio 3

PRICE GROUP 5

Collection Number: 58

Material: 90% pure New Wool, 10% Nylon



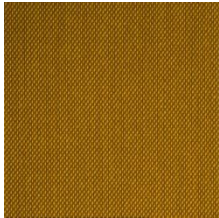
58/0796



58/0883



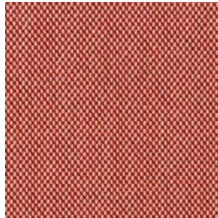
58/0966



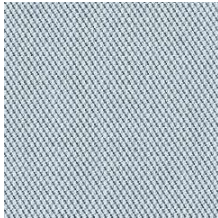
58/0453



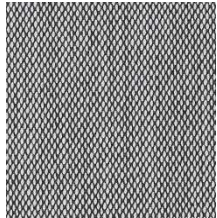
58/0533



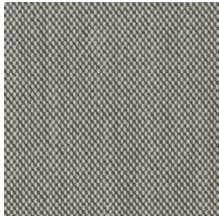
58/0636



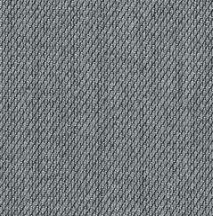
58/0713



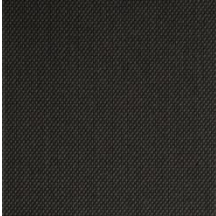
58/0124



58/0133



58/0153



58/0383



# Collection Antic Cuir Serie 100 - Leather

PRICE GROUP 5

Collection Number: 98

Material: Pigmented grain-leather



98/1114



98/1145



98/1179



98/1126



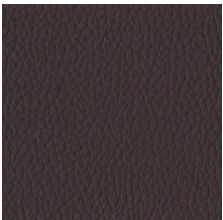
98/1142



98/1128



98/1101




98/1148



98/1103

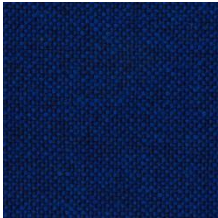


# Collection Hallingdal 65

PRICE GROUP 6  
Collection Number: SZ  
Material: 70% New Wool, 30% Viscose 



SZ - 764



SZ - 754



SZ - 944



SZ - 407



SZ - 526



SZ - 687



SZ - 200



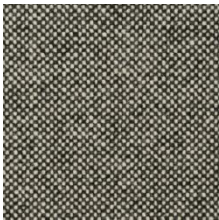
SZ - 110



SZ - 116



SZ - 130



SZ - 126



SZ - 368





# Collection Divina Melange 3

PRICE GROUP 6

Collection Number: SV  
Material: 100% New Wool



SV - 687



SV - 967



SV - 427



SV - 557



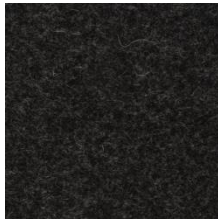
SV - 120



SV - 227



SV - 170



SV - 180



## Collection Runner

### PRICE GROUP Mesh

Collection Number: 40 - Mesh

Material: 80% Polyester, 20% Post-consumer recycled polyester

*Colours exclusive to Haworth (with the exception of 40/0999 and 40/0011)*



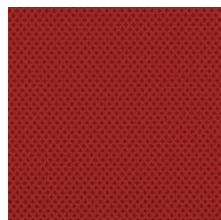
40/6150  
Corn Flower



40/8118  
Peat Moss



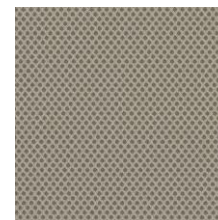
40/2055  
Sunflower



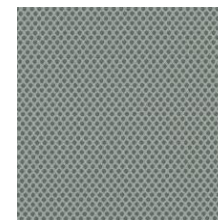
40/4127  
Sedum



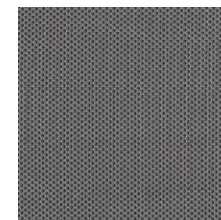
40/0173  
Moon Flower



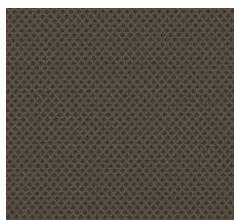
40/1191  
Beach



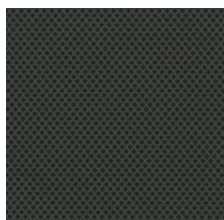
40/0169  
Silver Leaf



40/0011  
Byzantina



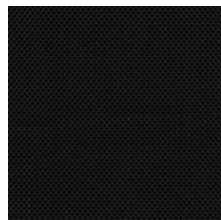
40/1193  
Mushroom



40/0171  
River Rock



40/0170  
Mulch



40/0999  
Black

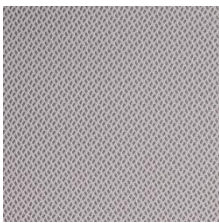


# Collection Rhythm

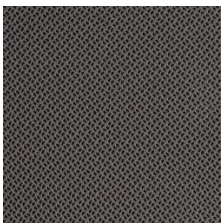
PRICE GROUP Mesh  
Collection Number: 42 - Mesh  
Material: 100% Polyester FR



42/6152



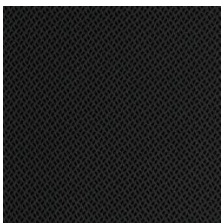
42/0165



42/0176



42/0025



42/0999







## Collection Mesh **Update**

### PRICE GROUP Mesh

Collection Number: 47/0400 – Mesh

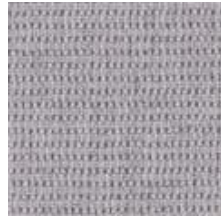
Material: 100% Polyester



47/0414\*  
Balsam



47/0415\*  
Water



47/0403  
Relax



47/0402  
Comfort



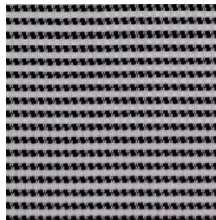
47/0401  
Support

\*Available for Zody II only

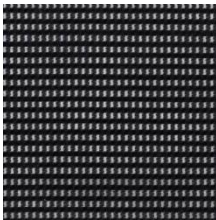


# Collection Mesh 47\*

PRICE GROUP Mesh  
Collection Number: 47-Mesh  
Material: 70% Polyester, 30% Polyamide



47/0020\*  
Grey-Black



47/0010\*  
Black

\*Available only for Comforto 99 and Comforto 39



# Collection Mesh 48\*

PRICE GROUP Mesh  
Collection Number: 48-Mesh  
Material: 100% Polyester



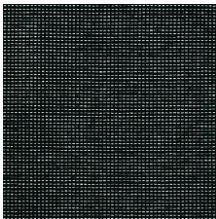
48/0203  
Kale



48/0205  
Fog



48/0208  
Slate



48/0201  
Black

\* Available only for Very Task



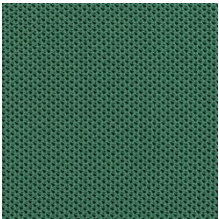


# Collection Soji Knit\*

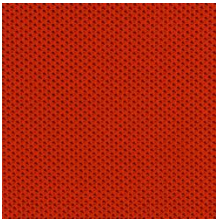
PRICE GROUP - Knit  
Collection Number: XT-Knit  
Material: 95% Polyester, 5% Monofilament Polyester



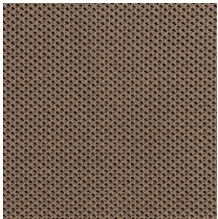
Navy – XT006



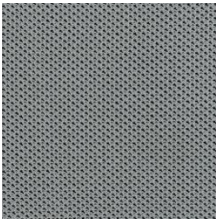
Juniper – XT004



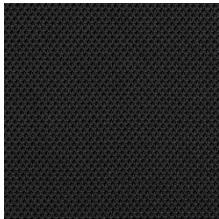
Cayenne – XT002



Clay - XT003



Mist - XT005



Carbon – XT001

\* Available only for Soji



# Collection Knit

PRICE GROUP – Knit  
PRODUCT SPECIFIC– Haworth Cardigan Lounge  
Collection Number:  
Material: 100% Polyester recycled (Xtreme®)



HALCB03  
Light Blue



HALCB02  
Light Green



HALCB01  
Dark Green



HALCB05  
Red



HALCB06  
Yellow



HALCB04  
Grey



# Collection Fern Digital Knit New

PRICE GROUP – Knit  
PRODUCT SPECIFIC – Fern Digital Knit  
Collection Number:  
Material: 100% Polyester recycled



XQ2WT  
Waterside



XQ2MR  
Mariner



XQ2DR  
Dune Rose



XQ2EM  
Emberglow

\* Available only for Fern Digital Knit





## BuzziFelt\* New

PRICE GROUP – Felt

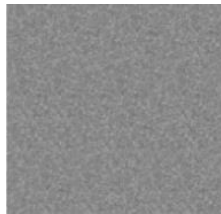
PRODUCT SPECIFIC – Haworth Collaborate

Collection Number: BF

Material: 100% Recycled P:E:T Felt, latex backing



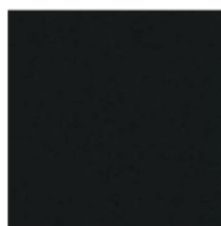
BF063  
Offwhite 63



BF067  
StoneGrey 67



BF075  
Jeans 75



BF068  
Anthracite 68

## Drift Felt 2.0 New

PRICE GROUP – Felt

PRODUCT SPECIFIC – Drift Felt 2.0 Screen

Collection Number: BZ

Material: 100% Recycled Material



BZ005  
Grey

\* Available only for Haworth Collaborate Carts liners and  
Haworth Collaborate Screen Fabric

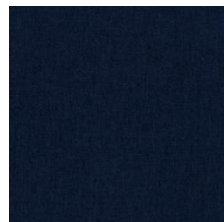
# BuzziFabric <sup>New</sup> Page 1/2

## PRICE GROUP

PRODUCT SPECIFIC – Drift Felt 2.0 Fabric

Collection Number: CAT A - BuzziSpace

Material: 70% Recycled Wool, 25 % Recycled Polyacryl, 5 % Recycled Other Fabric



FA-Navy 1007



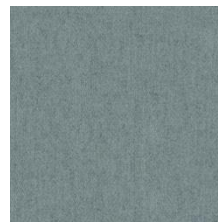
FA-Blue 45



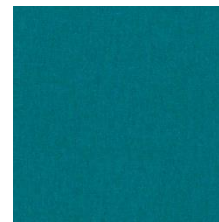
FA-Indigo 90



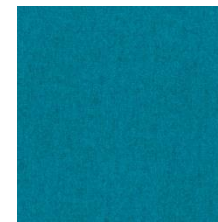
FA-Petrol 56



FA-Electric 16



FA-Aqua 143



FA-OceanBlue 147



FA-Azure 144



FA-LightBlue 41



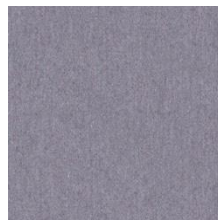
FA-Violet 72



FA-Purple 78



FA-Aubergine 74



FA-Lila 39



FA-Prune 76



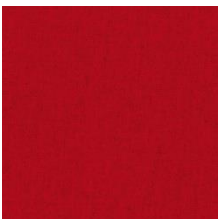
FA-Fuchsia 77



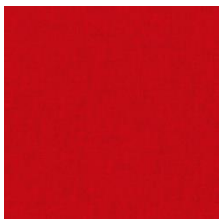
FA-Pink



FA- Nude 70



FA-Red 2011



FA-Fire 139



FA-Orange 2010



FA-Mandarin 129



FA-Mustard 63



FA-Yellow 24



FA-Mint 50

# BuzziFabric <sup>New</sup> Page 2/2

## PRICE GROUP

PRODUCT SPECIFIC – Drift Felt 2.0 Fabric

Collection Number: CAT A - BuzziSpace

Material: 70% Recycled Wool, 25 % Recycled Polyacryl, 5 % Recycled Other Fabric



FA-Jade 42



FA-Grass 59



FA-Pistache 52



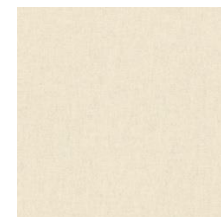
FA-Olive 53



FA-Bottle 61



FA-Army 14



FA-Ivory 101



FA-Naturel 1



FA-Beige 1037



FA-Kiesel 7



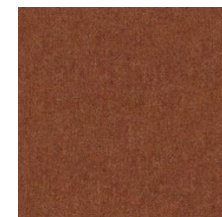
FA-Dolphin 180



FA-Shitake 124



FA-Camel 56



FA-Autumn 33



FA-Rust 29



FA-Taupe 1008



FA-DarkBrown 18



FA-Silver 57



FA-LightGrey 1000



FA-MidGrey 1001



FA-Black 1003





# Hero 2 <sup>New</sup> Page 1/2

## PRICE GROUP

PRODUCT SPECIFIC – Drift Felt 2.0 Fabric

Collection Number: CAT C- BuzzSpace

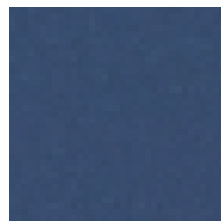
Material: 96% New Wool, 4 % Nylon



Hero 782



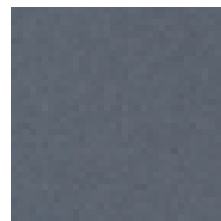
Hero 772



Hero 752



Hero 742



Hero 152



Hero 732



Hero 672



Hero 622



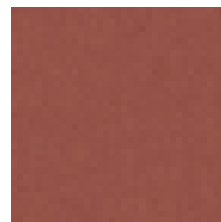
Hero 652



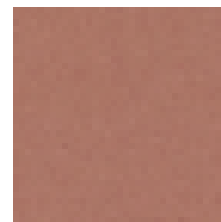
Hero 662



Hero 552



Hero 542



Hero 512



Hero 422



Hero 962



Hero 942



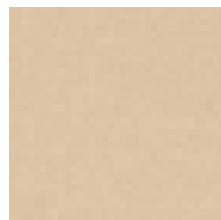
Hero 932



Hero 912



Hero 862



Hero 202



Hero 312



Hero 432



Hero 352



Hero 372



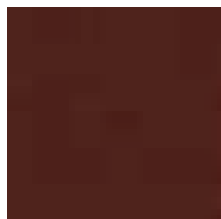
# Hero 2 <sup>New</sup> Page 2/2

PRICE GROUP –

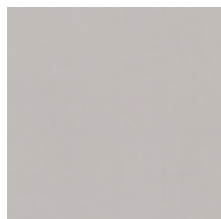
PRODUCT SPECIFIC – Drift Felt 2.0 Fabric

Collection Number: CAT C- BuzzSpace

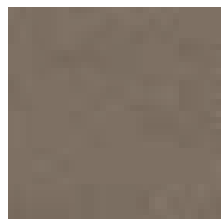
Material: 96% New Wool, 4 % Nylon



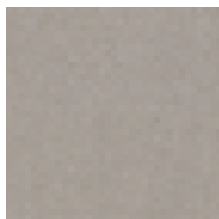
Hero 582



Hero 102



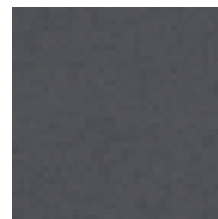
Hero242



Hero 212



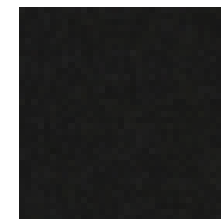
Hero162



Hero182



Hero392



Hero192



Hero 882

HAWORTH

## Finishes

The broad spectrum of surfaces we offer at Haworth ranges from real wood and veneer to melamine and glass, giving you every opportunity to select the right solution to suit your specific requirements.

*Note, that the following digital samples are for illustration purposes only. For the real colour, please refer to the physical swatch. All digital samples are valid until further notice.*







## Collection Really – Solid Textile Board

**PRODUCT SPECIFIC**– Tijo

Collection Number: KR

Material: 70% recycled wool + 30% bicomponent binder



KR001 –  
Cotton Blue



KR002-  
Wool slate



Plastic – Very

PRODUCT SPECIFIC – Very Guest



206 Glacier



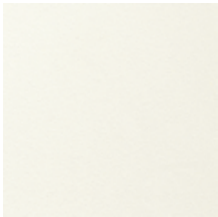
207 Grass



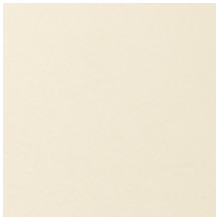
204 Ember



210 Tomato



209 Snow



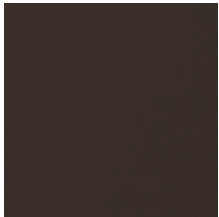
202 Canvas



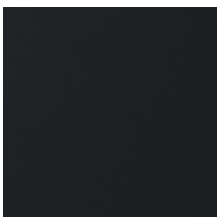
205 Fog



208 Slate



203 Cocoa



201 Black

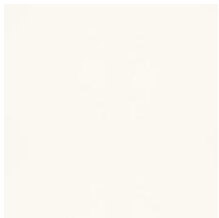


Perforated Back  
Structure



# Plastic Seating

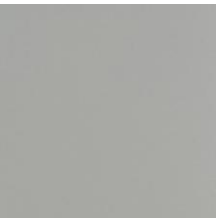
PRODUCT SPECIFIC  
Material: 100% Polymer



Snow/White



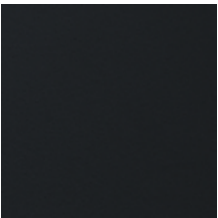
Smooth Plaster



Smoke



Fog



Black





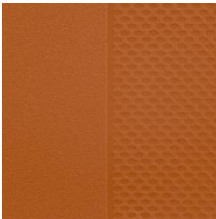
Plastic

PRODUCT SPECIFIC  
Material: 100% Polymer

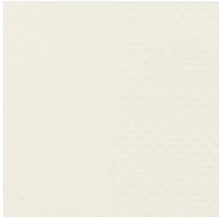
Maari™ -Shell and Arm Cap colours



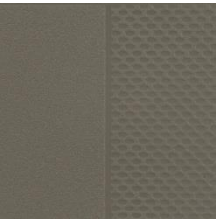
Balsam –  
TR1TO\*



Rusty Red–  
TRRR0\*



Smooth Plaster–  
TRPLS



Coffee –  
TRCF0



Black –  
TRF00



100% recycled material for Maari

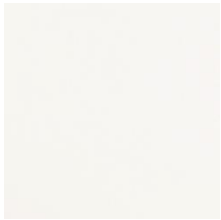
*\*Longer Lead time, please check with  
Customer Service*

Product Specific – Colours and Finishes may vary by product, please check Product Colour Matrix for appropriate colours



# Plastic – Tambour doors

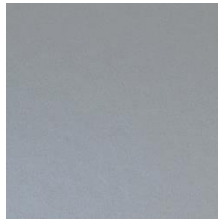
PRODUCT SPECIFIC – Storages/Tambour doors



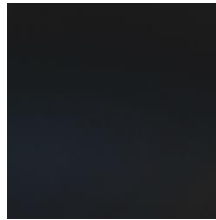
TEW - Edelweiss EC



T01/TA1 (Acoustic)  
White EC



TLEO - Titanium EC

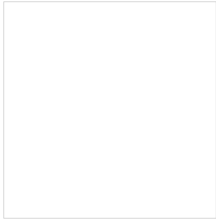


T04 - Dark Grey EC



# Melamine

## MELAMINE Standard



MEW - Edelweiss EC



M01 - White EC



MA1 - Acoustics  
White EC



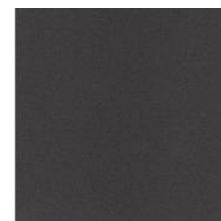
M05 - Sand EC



M06 - Lava EC



M02 - Light Grey EC



M04 - Dark Grey EC

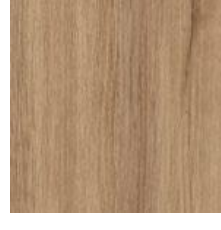
## MELAMINE Decor



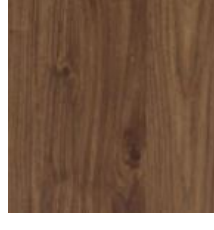
MD5 - Maple EC



MD7 - Light Oak



MD4 - Oak EC



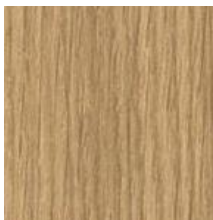
MD6 - Walnut EC



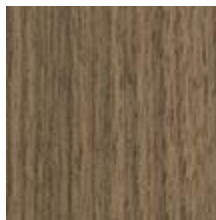


## Veneer

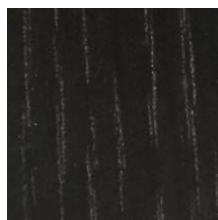
SPECIAL



Natural Oak EC\*  
V49



Walnut EC\*  
-NWW35



Black Oak EC\*  
NRW38

## Fenix

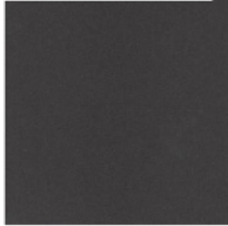
SPECIAL – For Anyway Connect tabletops only



White  
F0032



Grey  
F0725



Black  
F0720

\* Availability status: Except for Be\_Hold, veneer will be handled via special processes until further notice



Wood Surface

MASSIVE WOOD



WD1 –  
Wood Oak



SPH -  
Plywood \*

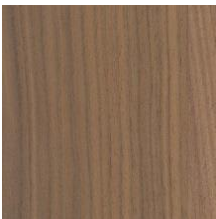
WOOD LEG OPTIONS - Poppy™



M5W35 -  
Natural Oak



M7W43 –  
Black Ash



M6W35 –  
Natural Walnut

WOOD LEG OPTIONS - Maari™



M5W35 -  
Natural Oak



M5W45 – Ink  
on Oak



M5W44 –  
Walnut on Oak

TABLET OPTION – Maari/Poppy with tablet

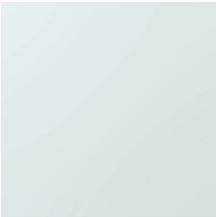


NR-W35 –  
White Oak

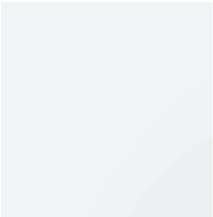
\* Available for Tijo only



Glass

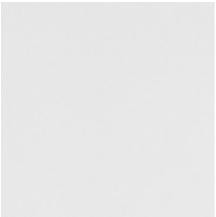


Snowglass  
EC VBL



Clear transparent  
EC OVT

PLEXIGLASS



White Sateen  
plexiglass\*

\* Available for Audience and Hugo storage only

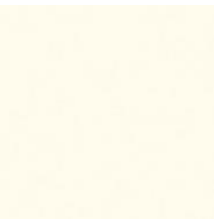
The images shown and colour representations are subject to your monitor quality and screen resolution settings. Physical samples are recommended, and available through your local Haworth dealer.





# Structures – Base Seating

METAL – SEATING / CHAIR BASES



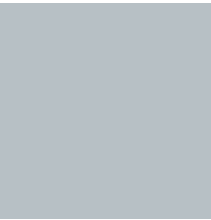
TRTWO –  
Structured White EC



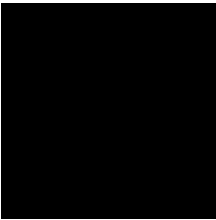
707 –  
Chrome EC



TRLEO –  
Titanium EC

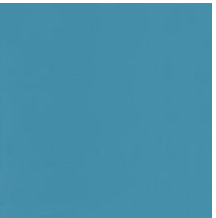


600 –  
Alu Polished EC

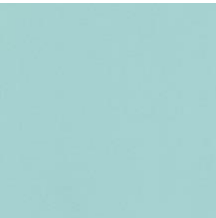


040 –  
Structured Black EC

# Powder/Lacquer Melamine



TR1G0 –  
Structured Blue Jay



TR1J0 –  
Structured Sky Blue



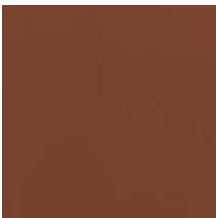
TR1Q0 –  
Structured Park Green



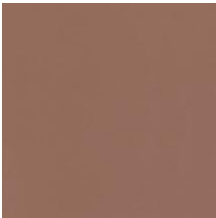
TRCT0 –  
Structured Chartreuse



TR1K0 –  
Structured Wren



TRRR0 –  
Structured Rusty Red



TR1H0 –  
Structured Terra



TR1M0 –  
Structured Lava

Product Specific – Colours and Finishes may vary by product, please check Product Colour Matrix for appropriate colours



# Structures – Lounge

## PRODUCT SPECIFIC

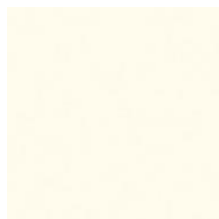
TABLET ARM –Maari with tablet /Poppy with tablet



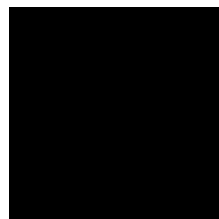
MDF Black



MDF White



Matte EU White

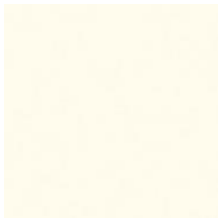


Matte EU Black

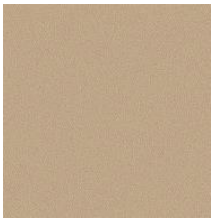


# Structures – Furniture

## METAL – FURNITURE POWDER PAINTS STANDARD



TRTWO –  
Structured White EC



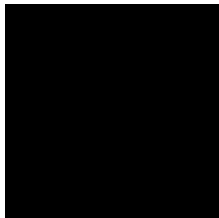
P08 –  
Structured Sand EC



TRLEO –  
Titanium EC



SW -  
Alu Graphite EC



040 –  
Structured Black EC

Product Specific – Colours and Finishes may vary by product, please check Product Colour Matrix for appropriate colours





# Structures – Furniture

PRODUCT SPECIFIC – Intuity

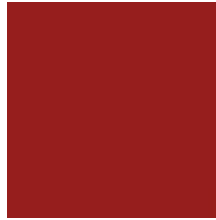
Additional options for metal colours for Accent Plate\*



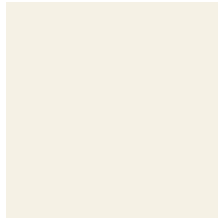
Ice blue EC



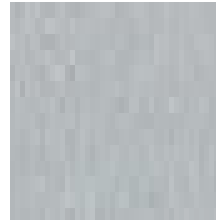
Orange EC



Signal red EC



White EC



Alu light silver EC

\*Accent plate colours only apply to the side plates of Intuity desks, NOT to the central/recessed leg of bench systems.

HAWORTH

## Cleaning and Maintenance

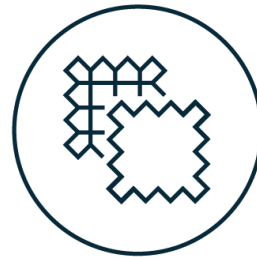




## General Instructions

The following instructions are recommendations only. While these instructions are usually effective, each circumstance is unique, and we cannot guarantee the treatments will be completely successful.

**General maintenance:** Wipe with a mild detergent and warm water. **Stain removal:** Wipe with a non-abrasive cleaner, rinse with warm water and dry with a soft cloth.



### Fabric Care

Most fabrics can be easily maintained by simply vacuum cleaning or brushing and cleaning with dry foam. Leather finishes should be wiped down with a slightly damp cloth or a recommended leather cleaner.



### Wood

Dust your wood furniture regularly to avoid build-up of dirt and grime that can dull the finish. Dust with a clean damp cloth following the grain of the wood. Wipe clean with a soft, dry cloth. Do not use excess amounts of water and do not allow water to stand on the wood surface.



### Other Material

**Leathers:** Wipe down with barely damp cloth or use a recommended leather cleaner.

**Glass:** Spray with a glass spray and wipe with a soft dry cloth.

**Metal:** Wipe with a mild detergent and warm water. For metal storage and chair bases, avoid getting the moving parts damp.



# Cleaning & Disinfecting

**Cleaning** is used to remove dirt from surfaces for general hygiene and maintenance. Cleaning **tools** include soap, water, and a damp cloth or other non-disinfectant cleaners.

**Disinfecting** removes up to 100% of bacteria, fungi and viruses from surfaces. Used primarily for hygiene reasons in homes, offices and medical settings. Disinfecting **tools** include various disinfectant solutions depending on the material of the surface being cleaned.

## Most workplace surfaces can be cleaned with these three cleaning solutions:

These recommendations are for the purposes of **disinfection** only. For general **care and maintenance** instruction related to the upkeep of a product's aesthetics over time, please refer to the Care and Maintenance guide.



- **Disinfecting Wipes** (containing Quaternary compound disinfectant). Look for products whose active ingredient is a Quaternary Ammonium Compound or "Quat" disinfectant. Make sure the wipes **do not include** bleach



- **Alcohol disinfectants** 70% medical alcohol (70% is minimum recommended by CDC). Disinfecting spray without bleach
- **Cleaners containing Hydrogen peroxide**





## Want to learn more?

Explore the [European Colour Collection- Product Matrix](#) document, which includes all the fabric and finish options for each Haworth product, along with detailed information on material qualities.

## Be inspired, get creative!

---