

HAWORTH

PopUp Training

July 2021

Content

- Value proposition
- Statement of line
- Colours and materials
- Stool recommendations
- Idea starters

HAWORTH

Value Proposition



HAWORTH

Spontaneous collaboration

The strength of the office is found in its ability to promote and support spontaneous collaboration.

These unplanned interactions help in the creation of new ideas, problem solving and permeation of the company culture.

PopUp helps to create handy touchpoints across the floorplate.



HAWORTH

Work anywhere

Technology has freed people to work anywhere, and employees consistently report a more positive experience when given the choice where to work.

To support flexible working, flexible product solutions can easily be placed and moved as required.

PopUp is a light scale table solution, perfect for touchdown individual workstations and easily moved to support other work activities.



Why PopUp?

Choice & Flexibility

PopUp can be easily used across the floorplate to create touchdown settings with its range of shapes, widths and depths. The variety of finish options ensure that visual continuity throughout a space can be maintained.

Inviting Collaboration

PopUp brings people together for collaborative work or socializing, with two standing heights make ad-hoc connections easy and engaging. The light scale of PopUp means it can be placed in convenient locations for post-meeting discussions or a quick chat and coffee.

Unlimited Applications

PopUp creates an appealing destination through its welcoming aesthetics designed for cafes, training areas, open office spaces, and huddle rooms – wherever impromptu interaction or socializing occurs.

HAWORTH

Statement of Line



Statement of Line - Tops

Top Dimension

Top Shape

Top Edge

		Width, w (mm)			
		1800	1600	1400	1200
Depth, d (mm)	760	✓	✓	✓	✓
	600	✓	✓	✓	✓
	460	✓	✓	✓	✓



Rectangular top



Oval top



Racetrack top



Rectangle edge

Statement of Line – Leg frame

Heights



915 mm



1050 mm

Glide/Castors



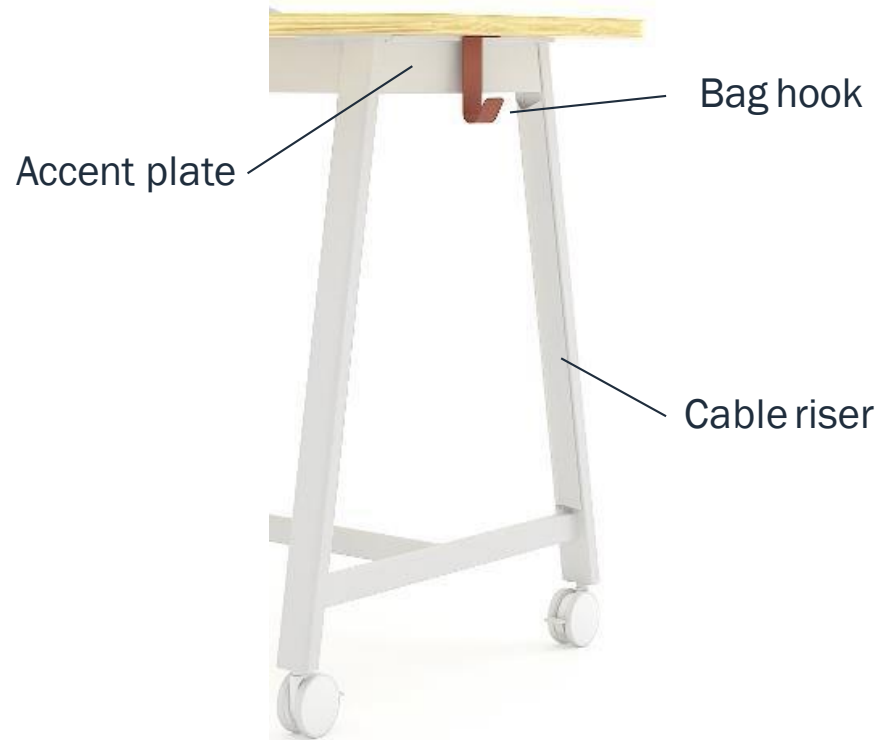
With Glide



With Castors

Statement of Line – Accessories

Accessories



HAWORTH

Colours and materials



Colours & Materials

Melamine



M01 - White EC



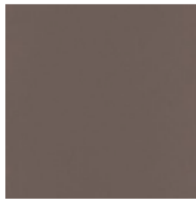
MEW - Edelweiss EC



M04 - Dark Grey EC



M05 - Sand EC



M06 - Lava EC



M02 - Light Grey EC



MD4 - Oak EC

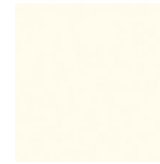


MD5 - Maple EC

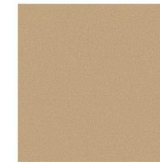


MD6 - Walnut EC

Metal



TRTW0 -
Structured White EC



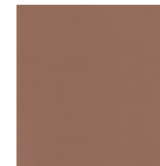
P08 -
Structured Sand EC



040 -
Structured Black EC



TRLE0 -
Titanium EC



TR1H0 -
Structured Terra



TRRR0 -
Structured Rusty Red



TR1G0 -
Structured Blue Jay



TR1Q0 -
Structured Park Green



TR1J0 -
Structured Sky Blue



TR1K0 -
Structured Wren



TR1M0 -
Structured Lava



TRCT0 -
Structured Chartreuse

HAWORTH

Stool recommendations



Stool recommendations



Maari

762 mmH
Metal / wood leg
Standard / lowback
With / without arm
With / without upholstery



Alodia

700 / 800 mmH
Metal
Without upholstery



Morrison Stool

700 / 800 mmH
Metal leg
Wood / with upholstery



High Pad Stool

700 / 800 mmH
Metal leg
With upholstery



Very Stool

756 mmH
Side stool / Wire stool
With / without arm
With / without upholstery

HAWORTH

Idea starters



Individual workspace

The individual workspace is the primary location for non-mobile workers during the day.

Providing a PopUp table within the workstation or nearby offers ready access to a worksurface for impromptu collaboration or a place to step away from the desk and change postures.



Collaborative area

Spaces where people come together to collaborate, and brainstorm are often designed with interactive technology.

Providing a variety of seating along with standing-height table options improves engagement and inspiration.



Community space

An informal community space provides an area away from workstations where people can gather, whether to work or socialize.

Pairing PopUp with lounge seating gives them variety and choice based on posture preferences and activities.



Project room

The table in a project room should offer a dedicated space where team members can focus, strategize, plan, and display ideas.

A project room should include a variety of visual display options and mobile furniture that allows users to change posture and orientation throughout the duration of the project.



Training room

From presentations to group collaboration, today's training rooms are dynamic spaces where staying alert and inspired are key.

PopUp is nimble enough to support engaged user postures while accommodating personal items with optional bag hooks for convenient access.

The compact surface and option for casters encourage people to move around with flexibility for a variety of group activities.



Tools

Product training

Assembly instructions

Product sheet



Thank you