

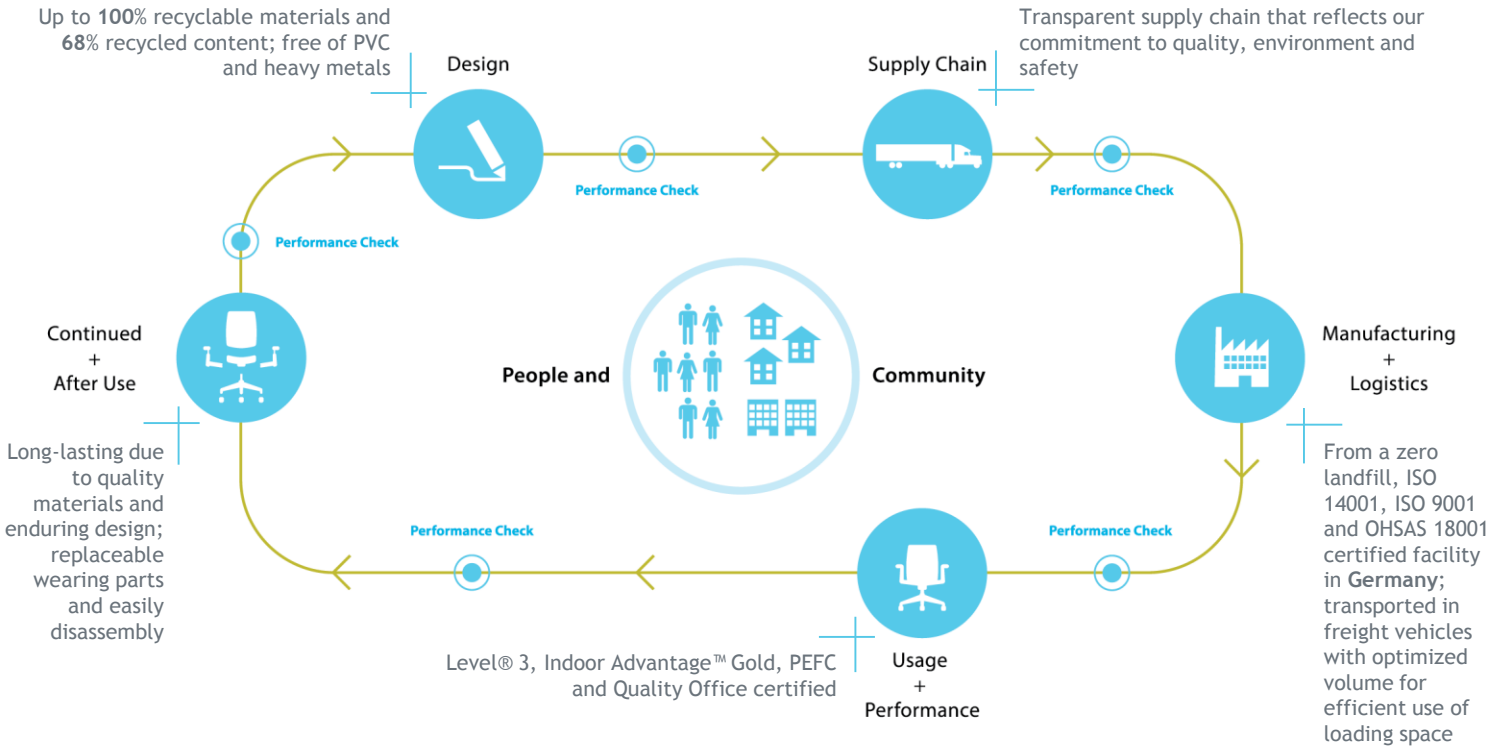
Vados

(with tambour door)

PRODUCT CATEGORY: STORAGE

PRODUCT ENVIRONMENTAL DATA SHEET

SECTOR: EUROPE



HAWORTH®

The recycled content for Vados is based on a calculation with melamine wooden corpus and polypropylene (PP) tambour doors

Please note that calculations of recycled content are based on data provided by suppliers (preferably), industry averages, ranges or other broadly based information. The purpose of our assumptions is to provide the most accurate recycled content calculations possible but variability in market conditions or manufacturing processes may result in higher or lower content than indicated on the PEDS.

Material	Material Weight	Recycled Content	Recyclability
Particleboard	58.0 kg (89.0%)	<p>40% 28%</p> <p>■ Pre Consumer ■ Post Consumer</p>	<p>100%</p>
Plastics	5.8 kg (9.0%)		
Aluminum	1.2 kg (1.8%)		
Steel	0.1 kg (0.1%)		
Other Materials	0.1 kg (0.1%)		
Total	65.2 kg (100%)		



LIFE CYCLE ASSESMENT (LCA)*

Life Cycle Assessments (LCAs) are one tool to enhance the triple bottom line of Haworth products by identifying high environmental impact stages within our products' lifecycles. Haworth is committed to better understanding and reducing the impacts of our products and operations on the natural world.

Carbon Footprint 116.0 kg CO² eq.

*Impact assessment method used was TRACI 2.1 v1.00



MATERIAL CHEMISTRY

We believe that our products should be safe for humans and the environment and work diligently to identify and eliminate chemicals of concern in the materials we source. We thereby consider legal requirements (i.a. REACH Article 33, RoHS directive), sustainable product certifications, and our own standards as part of our sustainability strategy.

Vados does not contain:

- Polyvinyl Chloride (PVC)
- Persistent organic pollutants
- Polybrominated diphenyl ethers (PBDEs)
- Heavy metals (hexavalent chrome, lead, cadmium, mercury)

Adhesives used to manufacture components are solvent-free.

Particleboard is from sustainable forestry.



CERTIFICATION



Indoor Advantage™ Gold certified
Certification # SCS-IAQ-04066



Level® 3 certified, highest level
Certification # SCS-LVL-05182



PEFC certified
Certification # DC-COC-000965



Quality Office certified
Certification # 8.144



BUILDING STANDARDS

Leadership in Energy and Environmental Design (LEED®) v4:

- Interiors life-cycle impact reduction - design for flexibility strategies include take back system, recyclable materials, or moveable walls
- Responsible sourcing of raw materials - Haworth reports on raw material sourcing and extraction; products contain recycled content
- Low-emitting materials - major products are GREENGUARD GOLD or Indoor Advantage™ Gold certified (see indication under "Certification")

WELL Building Standard®:

- Adaptable and flexible - our integrated portfolio ensures products are designed with flexibility and adaptability in mind
- Low emitting materials - major products are GREENGUARD GOLD or Indoor Advantage™ Gold certified (see indication under "Certification")
- Non-toxic materials - major products are free of chemicals of concern
- Material transparency - chemical and life-cycle assessments are being carried out