

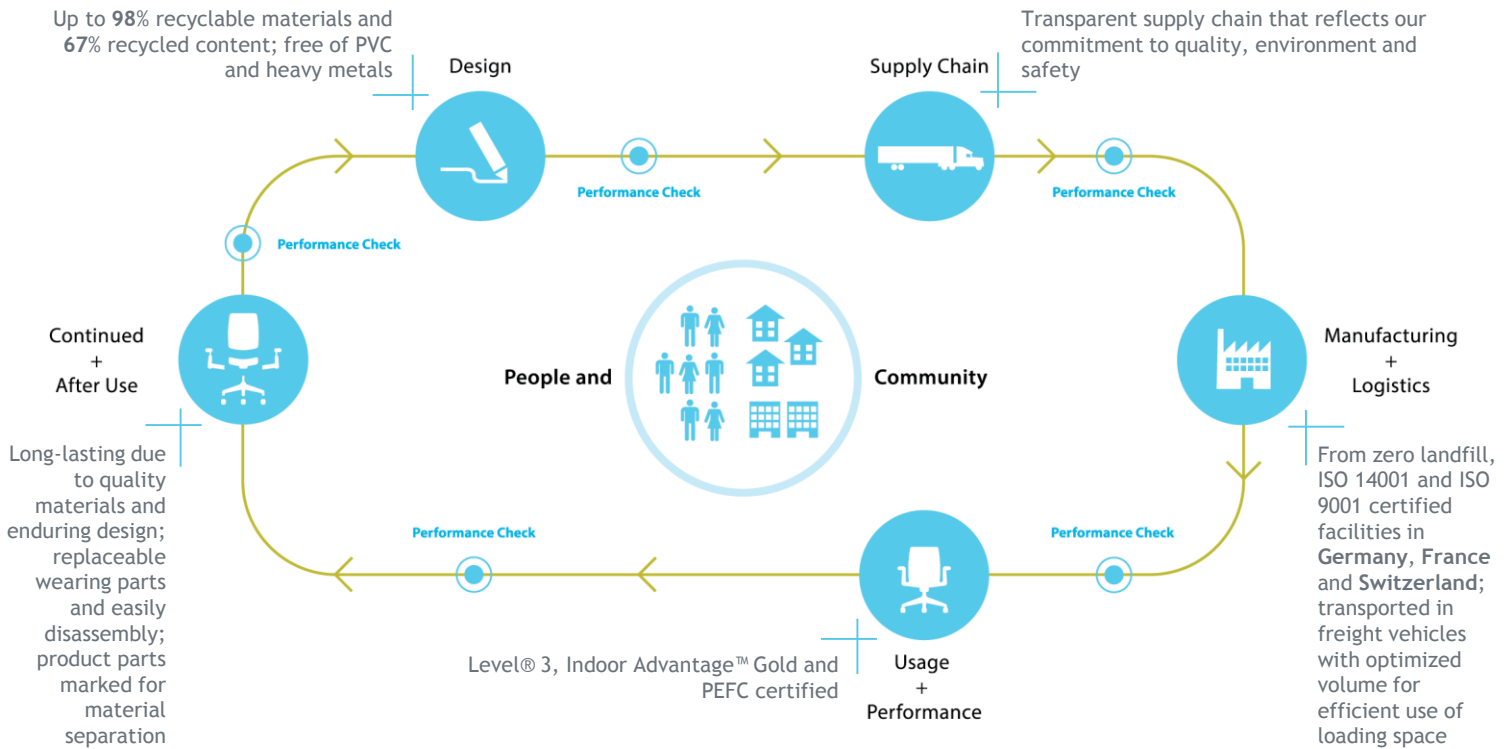
# Be\_Hold

(with hinged doors)

PRODUCT CATEGORY: STORAGE

## PRODUCT ENVIRONMENTAL DATA SHEET

SECTOR: EUROPE



## HAWORTH®

The recycled content for Be\_Hold is based on a Be\_Hold Element configuration with particleboard wooden corpus and hinged doors and steel shelves.

Please note that calculations of recycled content are based on data provided by suppliers (preferably), industry averages, ranges or other broadly based information. The purpose of our assumptions is to provide the most accurate recycled content calculations possible but variability in market conditions or manufacturing processes may result in higher or lower content than indicated on the PEDS.

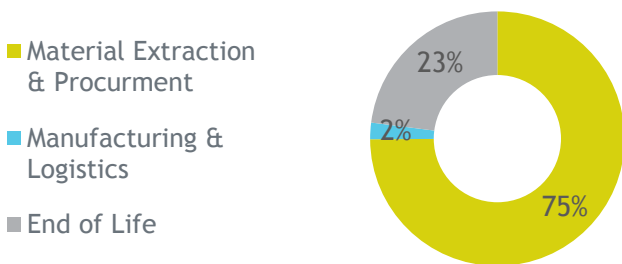
Material	Material Weight	Recycled Content	Recyclability
Particleboard	56.7 kg (83.0%)	<p>39% 28%</p> <p>■ Pre Consumer ■ Post Consumer</p>	<p>98%</p>
Steel	9.9 kg (14.4%)		
Plastics	1.2 kg ( 1.8%)		
Zinc	0.2 kg ( 0.4%)		
Aluminum	0.1 kg ( 0.1%)		
Other Materials	0.2 kg ( 0.3%)		
<b>Total</b>	<b>68.3 kg (100%)</b>		



LIFE CYCLE ASSESSMENT (LCA)

Carbon Footprint	67 kg CO <sub>2</sub> eq.
Acidification	0.3 kg SO <sub>2</sub> eq.
Eutrophication	0.06 kg N eq.
Ozone Depletion	1.6E-006 kg CFC11 eq.
Smog	6.3 kg O <sub>3</sub> eq.

Global Warming Potential by Life Cycle Stage



\*Impact assessment method used is TRACI 2.1



MATERIAL CHEMISTRY

We believe that our products should be safe for humans and the environment and work diligently to identify and eliminate chemicals of concern in the materials we source. We thereby consider legal requirements (i.a. REACH Article 33, RoHS directive), sustainable product certifications, and our own standards as part of our sustainability strategy.

Be\_Hold does not contain:

- Polyvinyl Chloride (PVC)
- Persistent organic pollutants
- Polybrominated diphenyl ethers (PBDEs)
- Heavy metals (hexavalent chrome, lead, cadmium, mercury)

Adhesives used to manufacture components are solvent-free. Metal parts are powder coated; a solvent/VOC-free durable finish.

Particleboard is from sustainable forestry.



CERTIFICATION



Indoor Advantage™ Gold certified  
Certification # SCS-IAQ-04066



Level® 3 certified, highest level  
Certification # SCS-LVL-05182 (if from Germany)



PEFC certified  
Certification # 10-31-1827 (if from France)  
Certification # DC-COC-000965 (if from Germany)



BUILDING STANDARDS

Leadership in Energy and Environmental Design (LEED®) v4:

- Interiors life-cycle impact reduction - design for flexibility strategies include take back system, recyclable materials, or moveable walls
- Responsible sourcing of raw materials - Haworth reports on raw material sourcing and extraction; products contain recycled content
- Low-emitting materials - major products are GREENGUARD GOLD or Indoor Advantage™ Gold certified (see indication under “Certification”)

WELL Building Standard®:

- Adaptable and flexible - our integrated portfolio ensures products are designed with flexibility and adaptability in mind
- Low emitting materials - major products are GREENGUARD GOLD or Indoor Advantage™ Gold certified (see indication under “Certification”)
- Non-toxic materials - major products are free of chemicals of concern
- Material transparency - chemical and life-cycle assessments are being carried out