



HAWORTH

Riverbend Meeting Box Overview

October 2023

Content

- Supporting the entire floorplate
- Statement of Line and Features
- Colours and Materials
- Certificates and Awards
- Applications

Supporting the entire floorplate

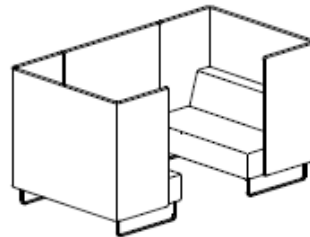
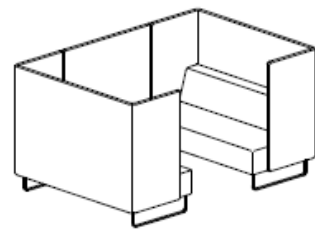
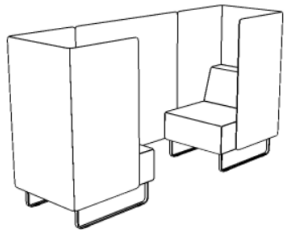
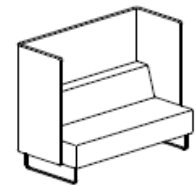
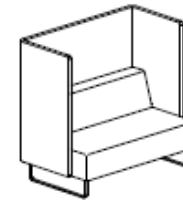
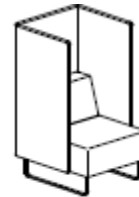
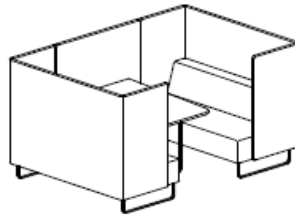
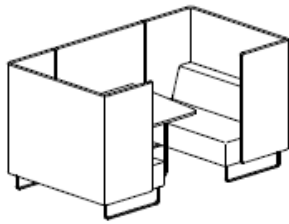
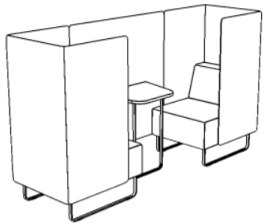
Riverbend Meeting Box – supporting the entire floorplate

- 1 Individual retreat**
for a quick phone call, to answer a few emails or just a moment of relaxation
- 2 Group meeting – enclosed**
creating a place for a group of people up to 6 to meet or chat with a higher level of privacy, ideal for inbetween individual workplace areas or as transition between zones.
- 3 Group lounge – semi enclosed**
for a short coffee break, a brief non-confidential conversation or a welcome lounge area to spend time in between meetings



Statement of Line and Features

Statement of Line



One Seater with Screen
1370 x 880 x 740mm

Two Seater with Screen
1370 x 880 x 1440 mm

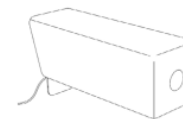
Triple Seater with Screen
1370 x 880 x 1760 mm

Conference Booth Mini
with or without table
58 cm seat depth:
1370 x 740 x 2375 mm
52 cm seat depth:
1370 x 740 x 2375 mm

Conference Booth Small
with or without table
58 cm seat depth:
1370 x 1440 x 2495 mm
52 cm seat depth:
1370 x 1440 x 2375 mm

Conference Booth Large
with or without table
58 cm seat depth:
1370 x 1760 x 2495 mm
52 cm seat depth:
1370 x 1760 x 2375 mm

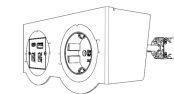
Accessories



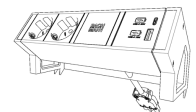
Armrest
with/without
Electrification



*TV mount



*Electrification
sofa module



*Electrification
table module

Available seat depth 520mm and **580mm (standard)**

Dimensions in mm
(Height x Depth x Width)

*2n phase: Q4 2023

Key Features

Optional Electrifications
USB (EU/CH/UK).
Modules can be installed on either tabletop or under sofa on site at the required position.

Seat
Two depth 520 mm or 580 mm.

Glides
Defined black with felt.

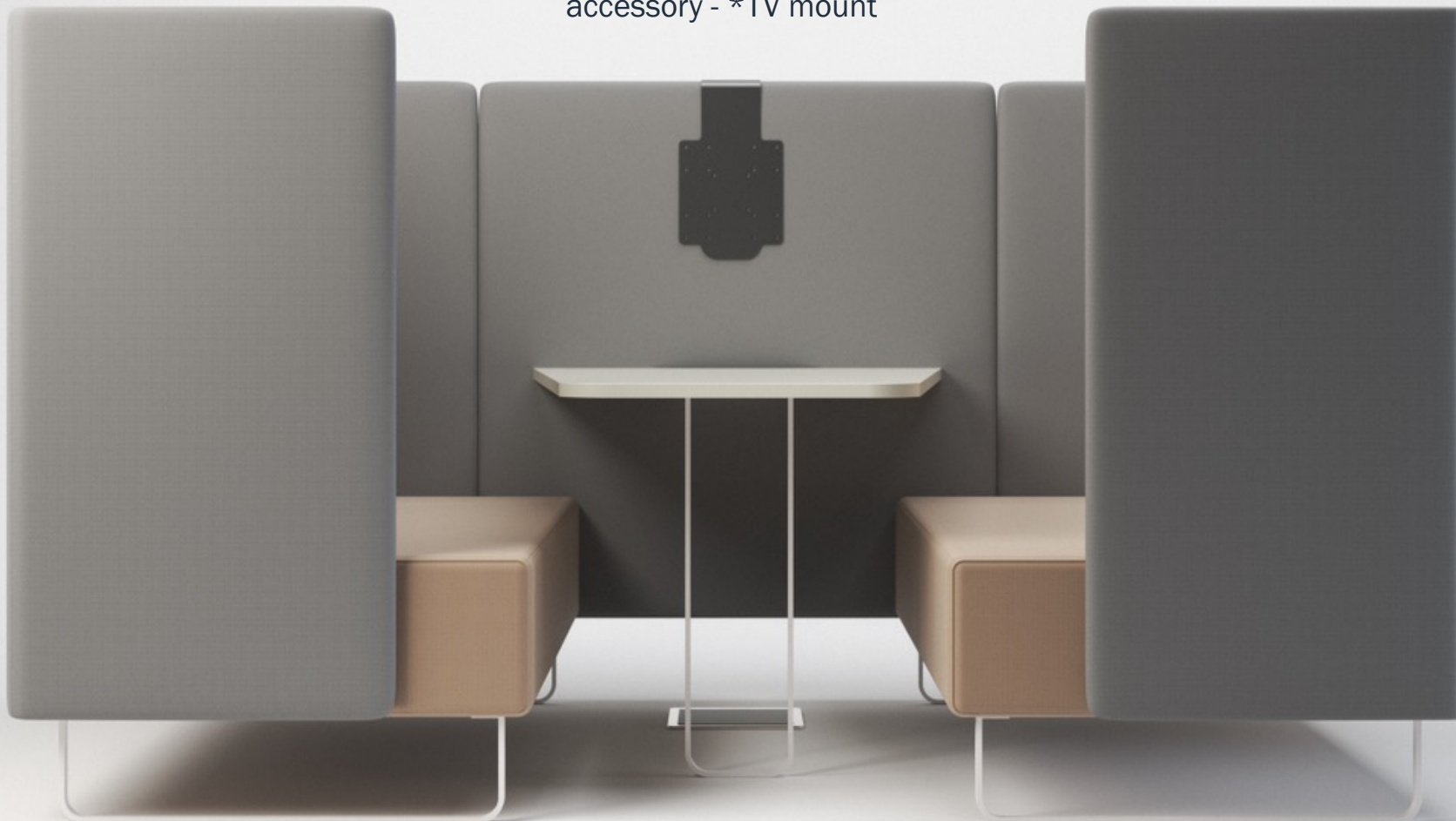
Central screen - an additional accessory - *TV mount

Tabletop
Melamine available in 9 colours.

Screen upholstery
Available in 15 collections.

Seat upholstery
Different upholstery for the screen and the seat. Available in 17 collections.

Metal Base sofa/table
Powder coated available in 11 colors.



*2nd phase: Q4 2023

HAWORTH

Armrest

An armrest, independent from the sofa, can be positioned wherever it is needed on all straight and curved Riverbend elements with a back.

Electrification:
Optional Socket or USB with
black or white frame.



***TV mount**

Independent of the booth, could be hung on the central screen. Simple construction with black finish allows to enjoy any kind of meeting.



Colours and Materials

*Electrification

4 types available for all markets:

- ☐ Type F (GER/Schuko)
- ☐ Type E (FR/B)
- ☐ Type J (CH)
- ☐ Type G (UK)

Table module in white configuration:

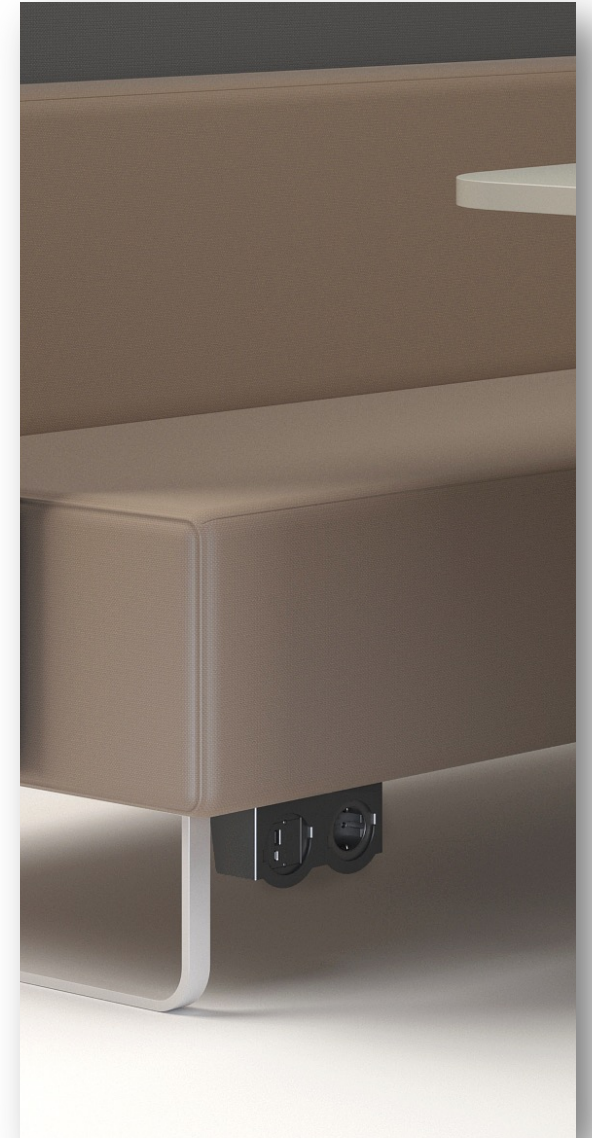
- 1 socket + cable 3m/ USB C 60W charger – designed for charging laptops

Below sofa module in black with 1 x socket + USB-A/C + cable 3 m.

The socket can be fixed under the Riverbend both sites – an assembly instruction available the Library.



*Table module



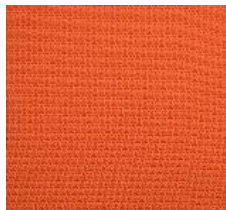
*Sofa module

Colours & Materials Fabrics Seat & Back

- Coll. Felicity (34)
- Coll. Convert (50)
- Coll. King L Kat (63)
- Coll. Maya (66)
- Col. Xtreme (82)
- Coll. Skai Evida (51)
- Coll. Blazer (61)
- Coll. Relate (1B)
- Coll. Class (68)
- Coll. Diagonale
- Coll. Remix (65)
- Coll. Atlas
- Coll. Oceanic (C4T)
- Coll. Big Arrow
- Coll. Steelcut Trio 3 (58)
- Coll. Divina Melange 3
- Coll. Hallingdal



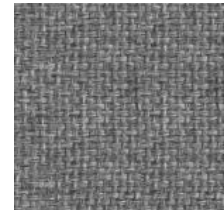
[Click here to view our
Colour Collection
Overview and Product
Matrix](#)



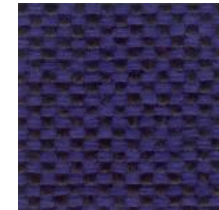
Felicity
(Coll. 34)



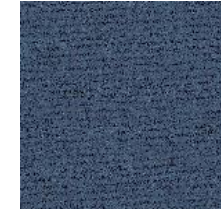
Convert
(Coll. 50)



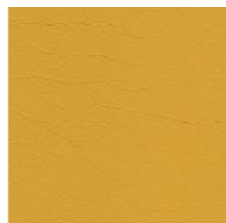
King L Kat
(Coll. 63)



Maya
(Coll. 66)



Xtreme
(Coll. 82)



Skai Evida
(Coll. 51)



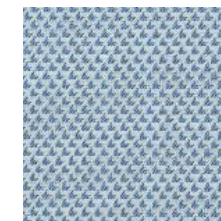
Blazer
(Coll. 61)



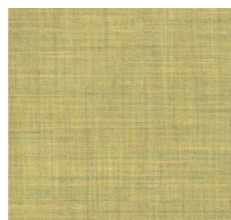
Relate
(Coll. 2B)



Class
(Coll. 68)



Diagonale



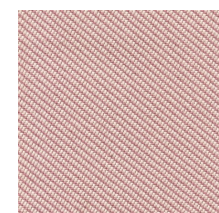
Remix
(Coll. 65)



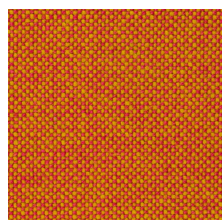
Atlas



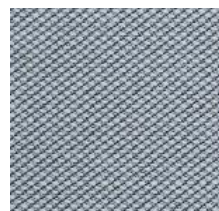
Big Arrow



Oceanic (C4T)



Hallingdal 65



Steelcut Trio
(Coll. 58)



Divina Melange

Colours & Materials Fabrics Screens

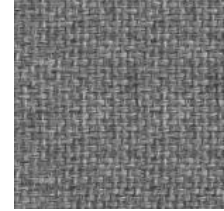
- Coll. Felicity (34)
- Coll. Convert (50)
- Coll. King L Kat (63)
- Coll. Maya (66)
- Col. Xtreme (82)
- Coll. Skai Evida (51)
- Coll. Blazer (61)
- Coll. Relate (1B)
- Coll. Class (68)
- Coll. Remix (65)
- Coll. Atlas
- Coll. Oceanic (C4T)
- Coll. Steelcut Trio 3 (58)
- Coll. Divina Melange 3
- Coll. Hallingdal



Felicity
(Coll. 34)



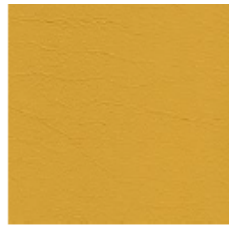
Convert
(Coll. 50)



King L Kat
(Coll. 63)



Maya
(Coll. 66)



Skai Evida
(Coll. 51)



Blazer
(Coll. 61)



Relate
(Coll. 2B)



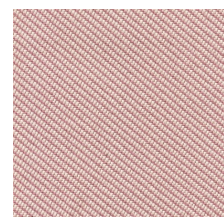
Xtreme
(Coll. 82)



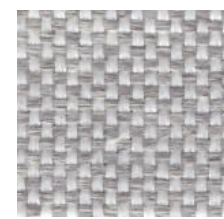
Remix
(Coll. 65)



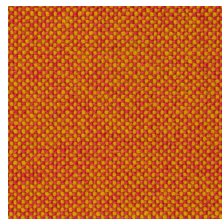
Atlas



Oceanic (C4T)



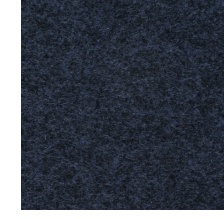
Class
(Coll. 68)



Hallingdal 65



Steelcut Trio
(Coll. 58)



Divina Melange



[Click here to view our
Colour Collection
Overview and Product
Matrix](#)

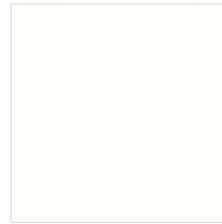
HAWORTH

Colours & Materials Finishes Surface and Trim

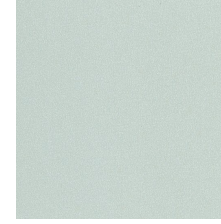
Melamine Table Surface



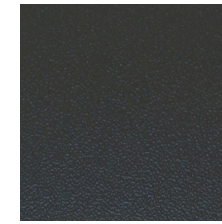
Oak EC



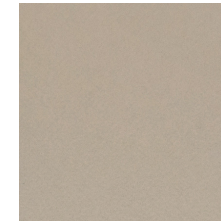
White EC



Light Grey EC



Dark Grey EC



Sand EC



Lava EC



Maple EC

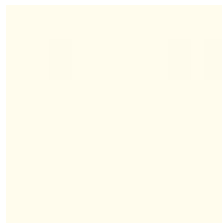


Walnut EC

Trim colour



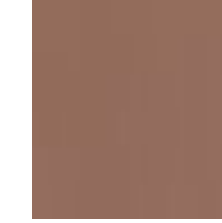
Structured
Black



Structured
White



Titanium EC



Structured
Terra



Structured
Rusty Red



Structured
Blue Jay



Structured
Park Green



Structured
Chartreuse



Structured
Lava



Structured
Wren



Structured
Sky Blue



[Click here to view our
Colour Collection
Overview and Product
Matrix](#)

Certificates

- PEDS
- GreenGuard
- GreenGuard Gold
- FCBA fire retardancy AM18

- PEDS
- GreenGuard
- GreenGuard Gold
- FCBA fire retardancy AM18

HAWORTH ~~HAWORTH~~

Europe | Product Environmental Data Sheet

Riverbend

Seating

Riverbend sofas and ottoman create settings that invite social interaction, casual meetings, and group work. Riverbend Meeting Box provides privacy for concentrated work or collaboration up to 6 persons.

Riverbend is manufactured in a pre-lawh 9000 and 14000 certified facility in France. This product can be easily disassembled at the end of its useful life. This product is designed to endure and is made of long-lasting, high quality materials. It has replaceable seating parts for easy disassembly. When a product reaches the end of its useful life, customers and partners are encouraged to avoid landfilling and instead pursue second-life options.

Material	Material Weight	
Flywood	30.5 kg	(64%)
Foam	7.5 kg	(16%)
Steel	5.9 kg	(12%)
Plastic	2.4 kg	(5%)
Fabric	1.5 kg	(3%)
Other	0.2 kg	(0%)
Total	47.9 kg	(100%)

Recycled Content

Category	Percentage
Pre-Consumer	95%
Post-Consumer	5%

Recyclability

Category	Percentage
Recyclable	95%

We believe that our products should be safe for humans and the environment and work diligently to identify and eliminate chemicals of concern in the materials we source. We consider applicable legal requirements (e.g. REACH, RoHS), sustainable product certifications, and our own standards as part of our sustainability strategy.

Riverbend material inventory:

- No Polyvinyl Chloride (PVC).
- No Persistent Organic Pollutants (POP).
- No heavy metals (hexavalent chrome, lead, mercury).
- Chlorofluorocarbons (CFC) not used as blowing agents for foam.
- Adhesives used to manufacture components are solvent free.
- Metal parts are powder coated.
- Sustainable fabrics available (e.g. EU EcoLabel, Deko Tex Standard 1000).

Please note that calculations of recycled content are based on the displayed product configuration. Data is provided by suppliers (preferably), industry averages or other broadly based information. Our purpose is to provide the most accurate recycled content calculations possible but variability in market conditions or manufacturing processes may result in higher or lower content than indicated. Depending on the available waste management infrastructures, effective recyclability can be higher.

[illegible][illegible][illegible]

[Click here for certificates](#)

Applications

HAWORTH

Individual retreat

If you have a private call or just want to concentrate nearby your desk Riverbend Meeting Box offers you the ideal place.

In combination with our side table Pip it can be transformed into a short term workplace for focus work, allowing you to answer emails or finish short term concentration tasks.



HAWORTH

Scheduled meeting with group

Spontaneously sit down for short or long meeting with a group up to 6 people. The Meeting Box offers you the right privacy for a successful collaborative work.

Ideal in an open plan space or if you need to flexibly add meeting options to your floorplate.



HAWORTH

Group lounge – semi enclosed

For a quick coffee break or a non-confidential standup meeting or if you just need a break in between two meetings, the group lounge is a great way to create breakout areas for smaller groups.

The semi-enclosed setting is also ideal if you want to create a smooth transition in between zones or create inviting welcome areas.



HAWORTH

One style for the entire floorplate

One product family for a variety of space types
Riverbend Meeting Box is a part of the Riverbend product line and can be seamlessly combined with other Riverbend modules and the ottoman Pebble.

Modular but not complicated

The Riverbend allows for a lot of flexibility through different modules without being too complicated. Planning spaces with Riverbend has never been more easy.



Thank you