

Maari with tablet Overview

Content

- Value Proposition
- Statement of Line
- Colours and Materials
- Applications
- Certificates and Awards

Value Proposition

A Flexible Choice

Flexible seating that offers space for both focus and collaboration gives people freedom of choice in where and how they work. The Maari five-star base chair with tablet provides active, dynamic seating that comfortably supports a wide range of people and activities. The generously sized, adjustable tablet can be mounted on either the left or the right side of the chair and offers dual-pivot user control with 360° movement at both the arm's pivot joint and tablet surface connection point.

HAWORTH

Why Maari with Tablet?

- From comfortable seating in work and learning areas to occasional seating in lecture halls, Maari with Tablet helps provide a dynamic and versatile environment to encourage creativity, productivity, and well-being. Maari with tablet is a smart, multi-use, and agile chair that improves efficiency while supporting the diverse ways people work. Whether you set it in an open-plan office, a conference or a training room, it will be a highly ergonomic solution



HAWORTH

Why Maari with Tablet?

- Broadening the application range of the Maari™ family of seating is the Maari chair with tablet. Adaptable for a variety of workstyles and postures, the Maari chair with tablet features an adjustable, dual-pivot tablet with right- or left-hand accommodation for a wide range of people and workstyle needs.
- The Maari chair with tablet is ideal for healthcare and higher education environments, especially when specified without upholstery for easy cleanability.



Statement of Line

HAWORTH

Maari with Tablet Statement of Line

Maari offers two functional combinations in one seating family: with arms and without arms.



Available soon: 5 star
base with Arms
and Tablet*



5 star base without Arms
with Tablet

HAWORTH

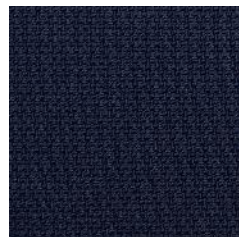
Key Features

- Specify a right-side or left-side mounted tablet
- Dual-pivot tablet rotates 360° at both the arm's pivot joint and tablet surface connection point
- Large tablet surface dimensions: 48,3 cm x 29,2 cm
- Available on the five-star base with casters
- May be specified with or without arms



Colours and Materials

Colors & Materials Finishes and Upholstery



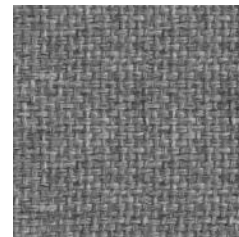
Felicity
(Coll. 34)



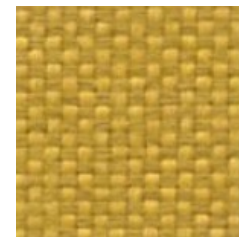
Convert
(Coll. 50)



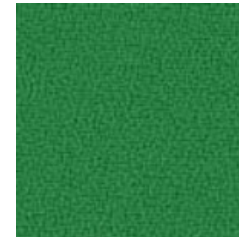
X2
(Coll. 59)



King L Kat
(Coll. 63)



Maya
(Coll. 66)



Xtreme
(Coll. 82)



Skai Evida
(Coll. 51)



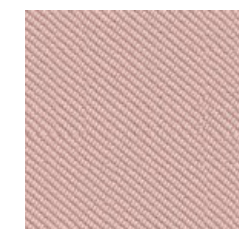
Blazer
(Coll. 61)



Class
(Coll. 68)



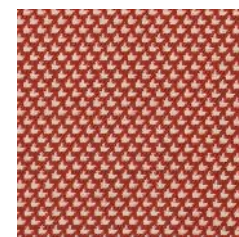
Relate



Oceanic



Small Arrow



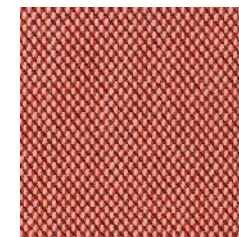
Diagonale



Atlas



Big Arrow



Steelcut Trio
(Coll. 58)



Antic Cuir
(Coll. 98)



Divina
Melange 3

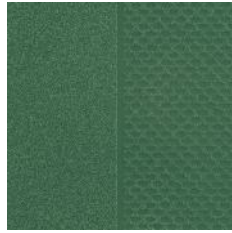


Hallingdal 65

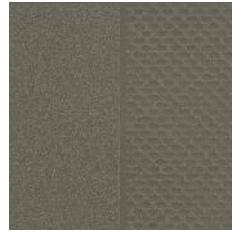
Colors & Materials

5-star Chair Finishes

Shell and Arm Cap colours



Balsam
TR1T0



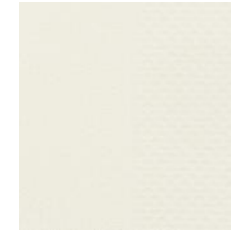
Coffee
TRCF0



Black
TRF00

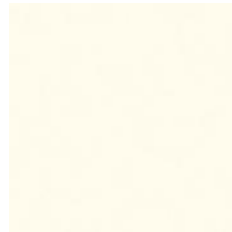


Rusty Red
TRRR0



Smooth Plaster
TRPLS

5-star Base Finishes



Structured
White EC
TRTW0



Structured
Black EC
040

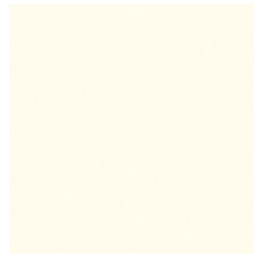
Colors & Materials Tablet Finishes

Tablet Surface

MDF



MDF Black



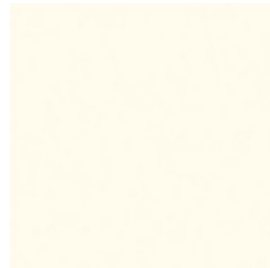
MDF White

Wood



White Oak

Tablet Arm



Structured White
EC TRTWO



Structured Black EC
040

Applications

HAWORTH

Meeting Room



HAWORTH

Collaborative Space



HAWORTH

Touch down spaces



HAWORTH

Exam Room



HAWORTH

Living Room



Certificates and Awards

Certificates and awards for Maari

- FEMB: Level 3
- GreenGuard
- GreenGuard Gold
- Indoor Advantage Gold



Thank you!