



HAWORTH

Aloha Active Upholstered Back

2024

HAWORTH

Aloha Active The Intuitive Seating Experience

Based on a success in Asia Pacific we are launching the Aloha platform in EMEA. The first model launched was Aloha Active task chair with a mesh back. Now we are happy to announce the launch of Aloha Active Upholstered Back.

Aloha is the new affordable task-chair staple of the EMEA workplace. Haworth has leveraged its extensive experience in task-seating to deliver class-leading comfort. Aloha Active's considered design and a user-friendly weight-activated mechanism creates a highly desirable seating versus the competition

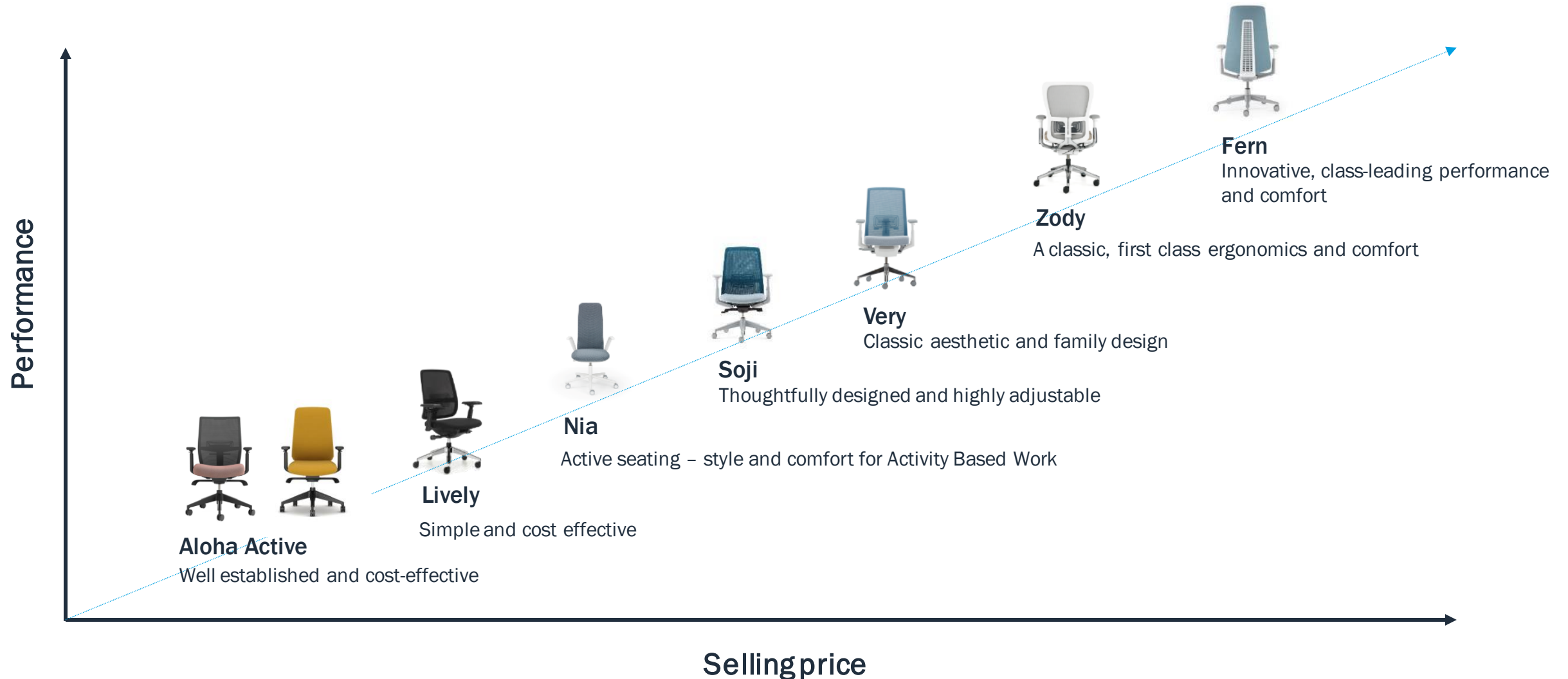


Key features

- Great balance between price and performance
- Everyday comfort
- Supports a wide variety of postures
- Stylish design to fit seamlessly into workspaces
- Wide range of upholstery



Aloha positioned in the Haworth seating portfolio



Aloha Statement of Line

As diverse as its users,
designed for every workstyle
and a variety of applications in
the workplace.

Aloha Active
Mesh Back



Aloha Active
Upholstered Back



Aloha Active



Design Story

As a best seller in Asia-Pacific, Aloha Active perfectly balances good looks, affordability and function.

Where can I use the product?

Fits for assigned, unassigned workspaces, for collaboration and conference rooms.

What are the important product features?

Simple control layout for easy adjustment. Aloha Active features a weight-activated mechanism that adapts to the user. Great balance between price and performance.

SOL Aloha Active Upholstered Back

Product Features



SOL Aloha Active Upholstered Back

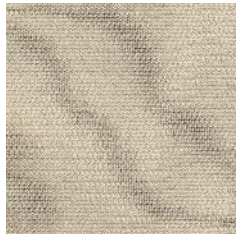
Colours & Materials



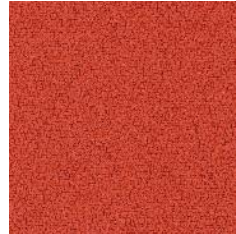
Colours & Materials – Finishes & Seat upholstery



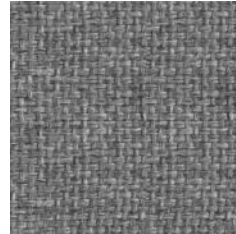
Felicity
(Coll. 34)



Convert
(Coll. 50)



Xtreme
(Coll. 82)



King L Kat
(Coll. 63)



Maya
(Coll. 66)



Skai Evida
(Coll. 51)



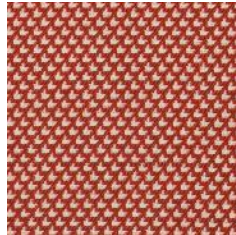
Blazer
(Coll. 61)



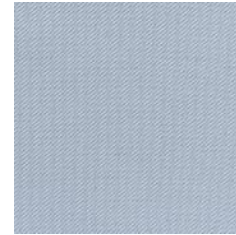
Class
(Coll. 68)



Oceanic



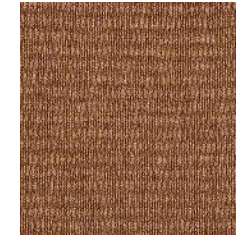
Diagonale



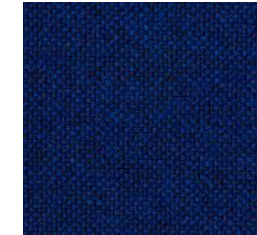
Relate



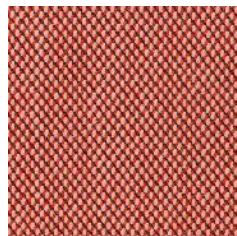
Remix
(Coll. 65)



Atlas



Hallingdal 65



Steelcut Trio
(Coll. 58)



Divina
Melange 3

Plastic Base



Black
001

Plastic Frame



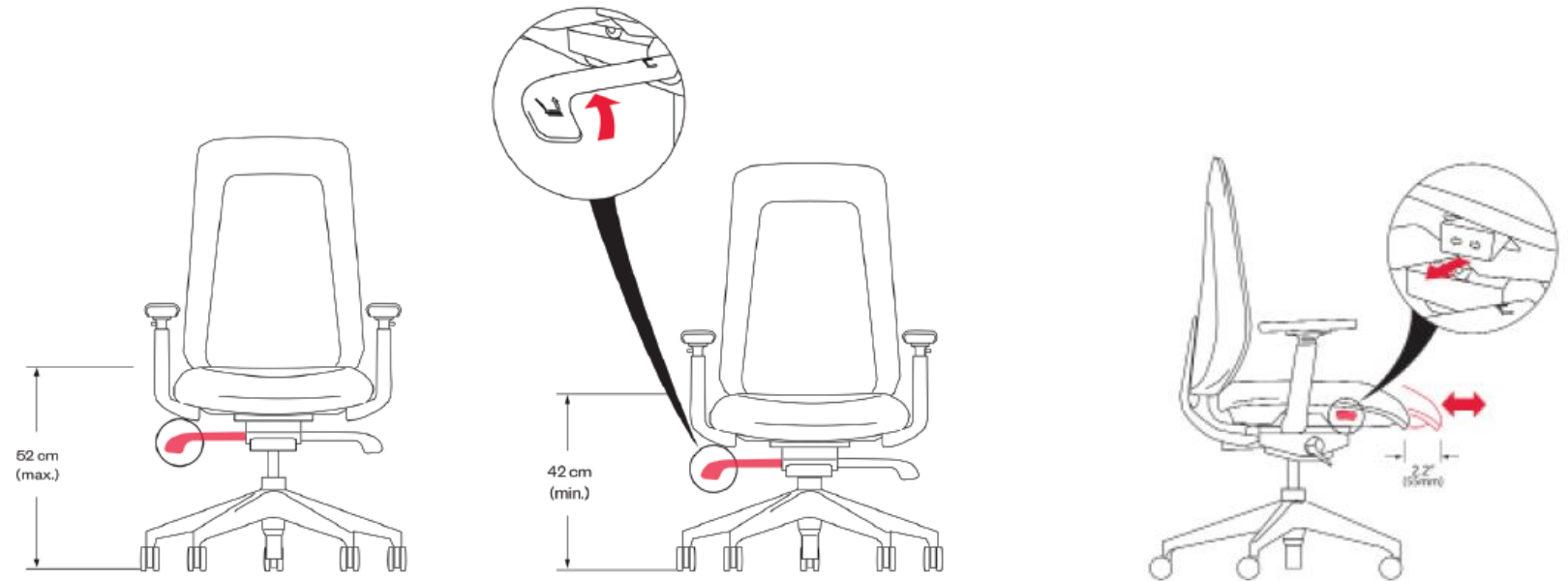
Black
TRF00

Seat height adjustment

- Pneumatic seat height adjustment.
- Seat height adjusts 120 mm from 400 mm to 520 mm .

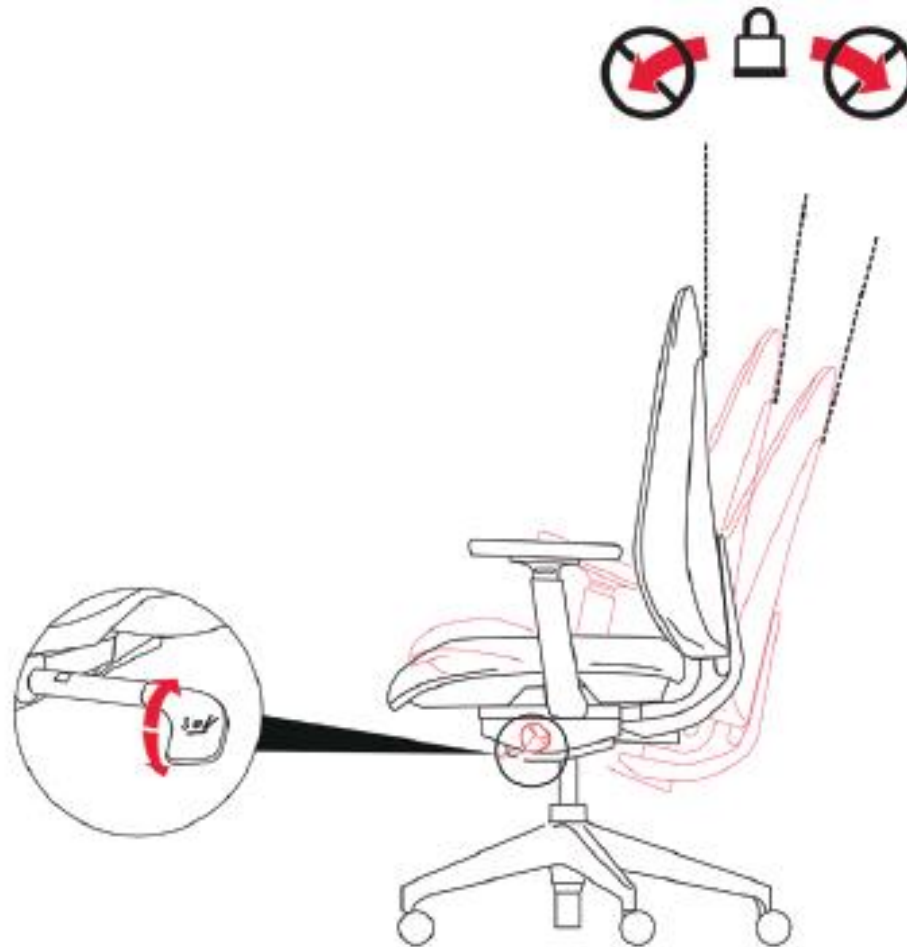
Seat depth adjustment

- Seat depth adjustment moves the seat pan to accommodate different legs lengths.



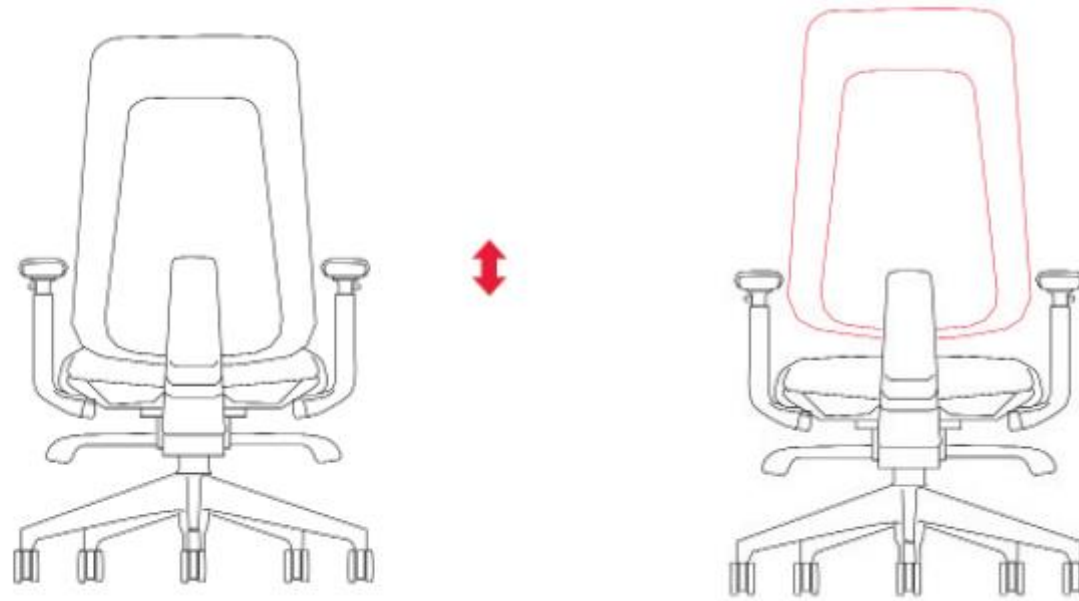
Back lock

- Back lock allows users to lock the back of chair at upright position for task application. In total there are 3 back rest positions to fix.



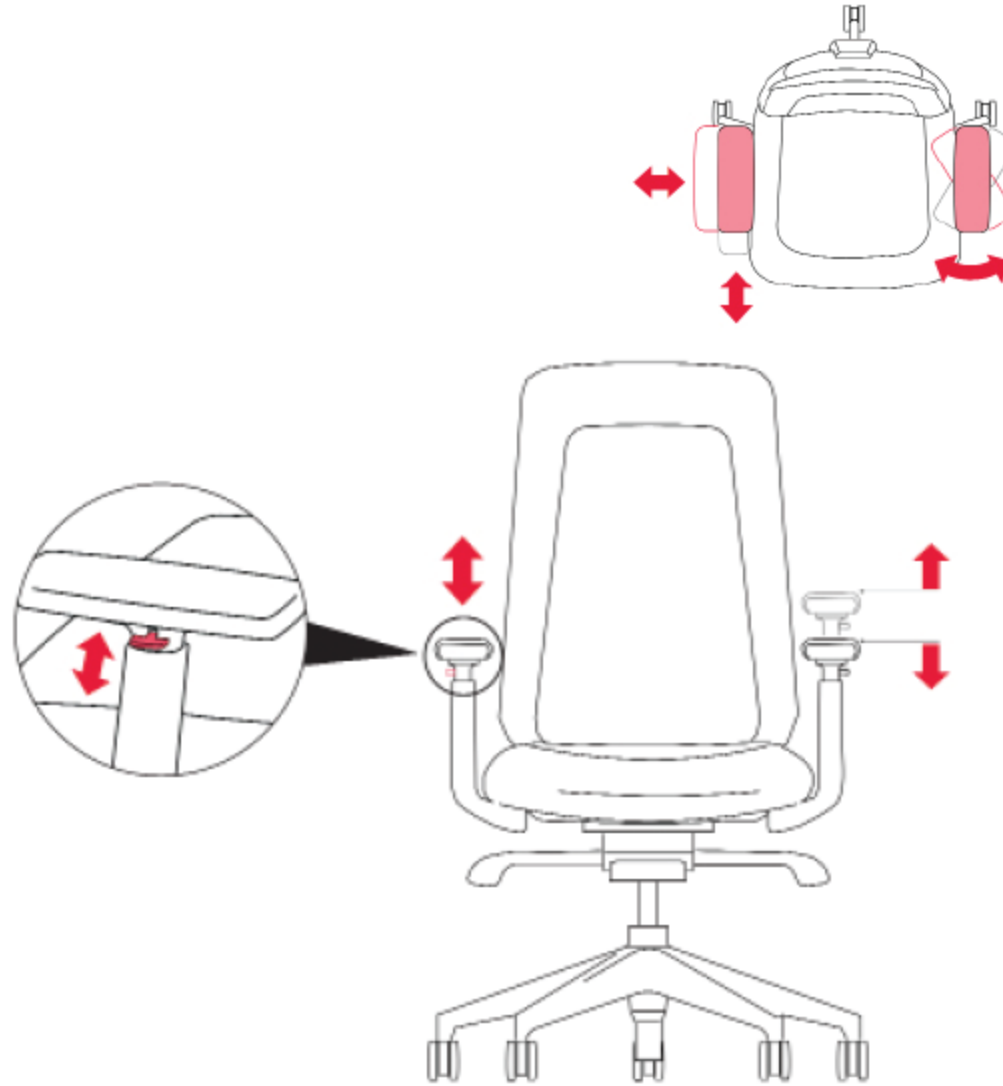
Back height adjustment

- Back of a chair allows user to adjust the back height as per curvature of lumbar.



Arms

- Armless, 1D, 4D arms
- Allow user to adjust height, side to side, front-to-back, and angle.



Thank you!