

A vertical image on the left side of the slide showing a wooden chair back and a green and purple striped rug on a wooden floor.

HAWORTH

Very Family Sales Presentation

Nov 2022

Content

- Value Proposition
- Statement of Line
- Functions
- Colors and Materials
- Applications
- Certificates and Awards

Value Proposition

Why Very?

A Family with Universal Appeal

Born of global design, the Very family of seating unites people and spaces with a sustainable, full-floorplate solution. This multi-dimensional line of chairs and stools delivers visual continuity to create a cohesive look and feel throughout the entire workplace—from workstations to cafés, and training spaces to conference rooms.

A Chair for Every Purpose

From simple comfort to high ergonomic performance, there's a Very chair for everyone. The task chair was designed with patented lumbar support, asymmetrical control, and supportive mesh to enhance comfort. Easy-to-use adjustments let each person tune the chair to fit their needs. Very seminar and conference chairs provide intuitive recline and side-to-side torsional flex to increase mobility and comfort.

Asymmetric lumbar support

Research has indicated that over 74% of individuals tend to prefer more support on one side of the lower back than the other.

Only Haworth offers asymmetric lumbar support that is adjustable – the highest performance available in lumbar support. Comfort is greatly enhanced through a 102-mm lumbar height adjustment combined with asymmetrical adjustable support.



Statement of Line

HAWORTH

Very **Statement of Line**

Very works in harmony across multiple work environments and applications.



Task



Executive



Wire stacker



Side



Seminar



Conference



Wire stool



Side stool



Conference stool

Statement of Line – Very Task

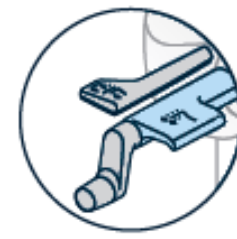


Functions

Function Overview



Asymmetrical
Lumbar
Adjustment



Pneumatic
Seat Height
Adjustment



Arm Height
Adjustment



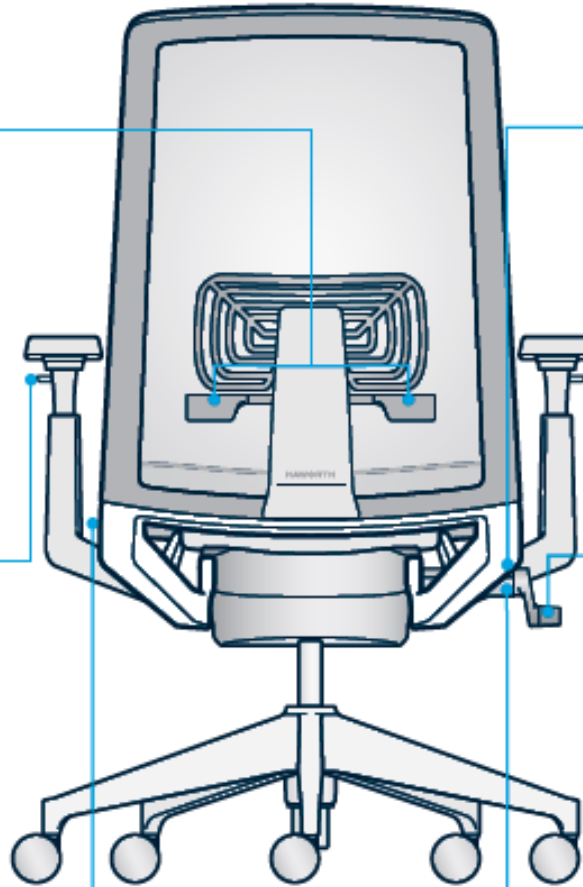
Tilt Tension
Adjustment



Seat Depth
Adjustment



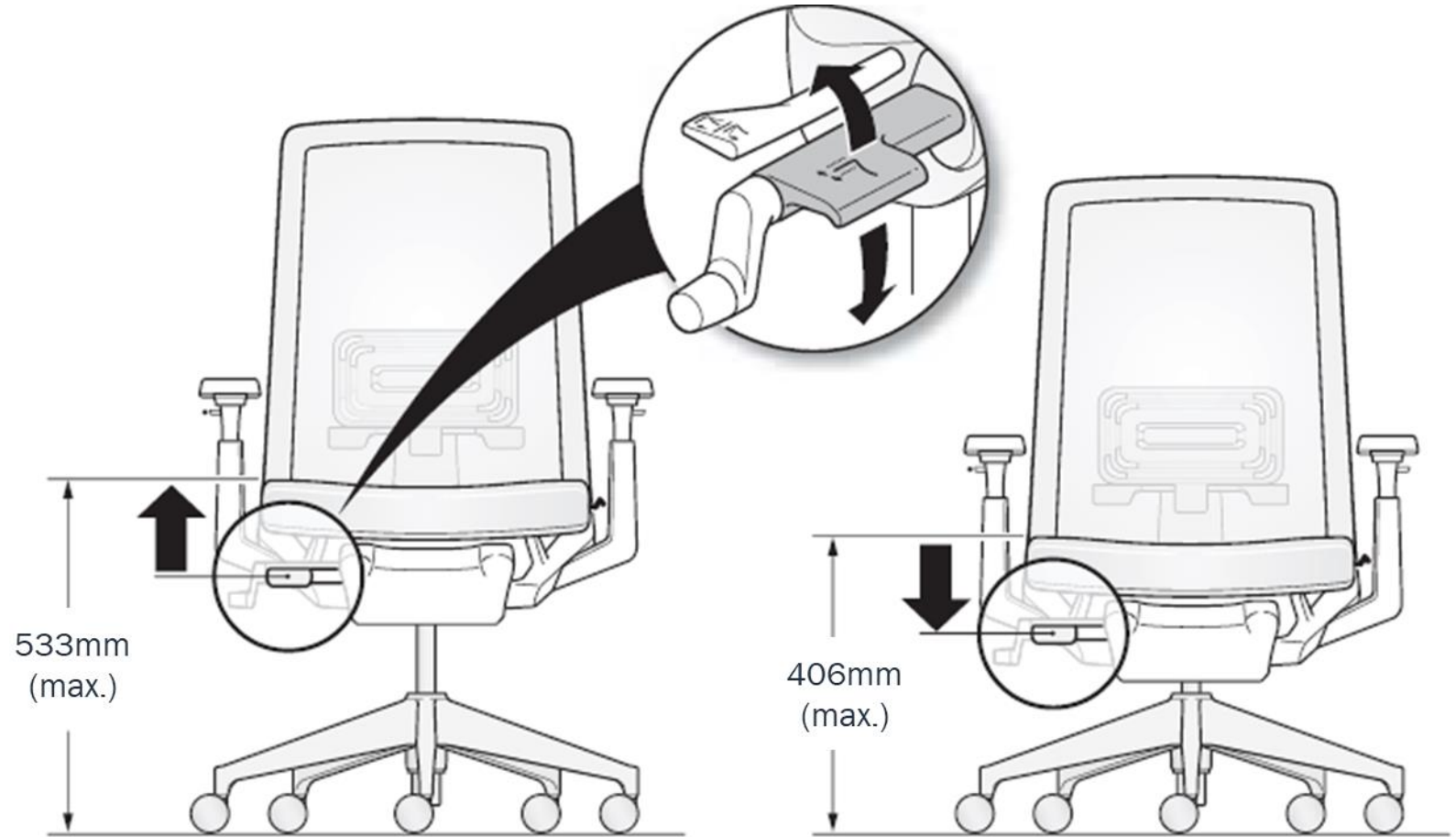
Forward Tilt



Back Lock

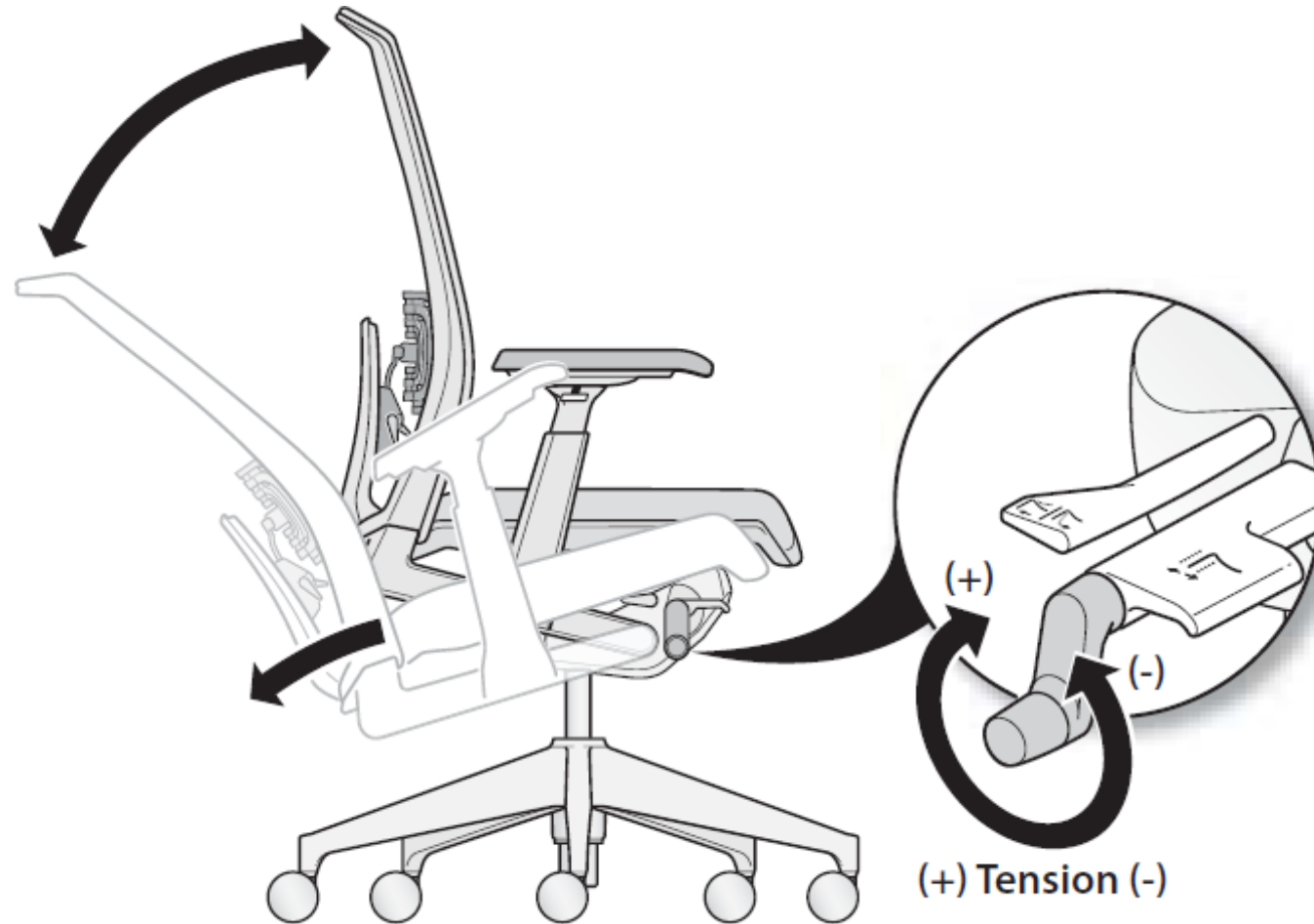
Seat height adjustment

- Pneumatic seat height adjustment.
- Seat height adjusts 127 mm from 406 mm to 533mm.



Back tension adjustment

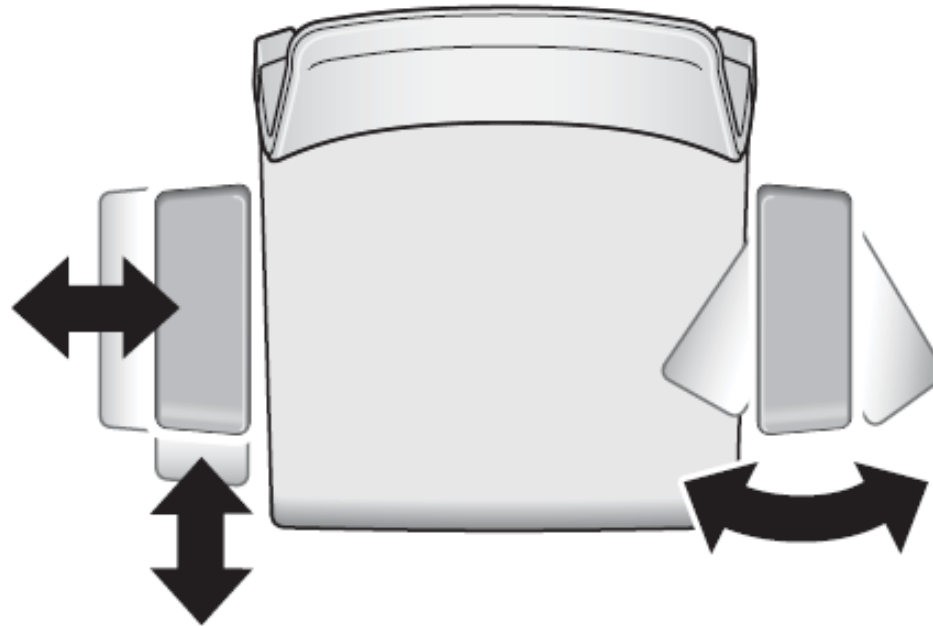
- Regulates the amount of resistance felt when leaning back in the chair and the effort required to recline the chair backwards.



4D Arm adjustment (optional)

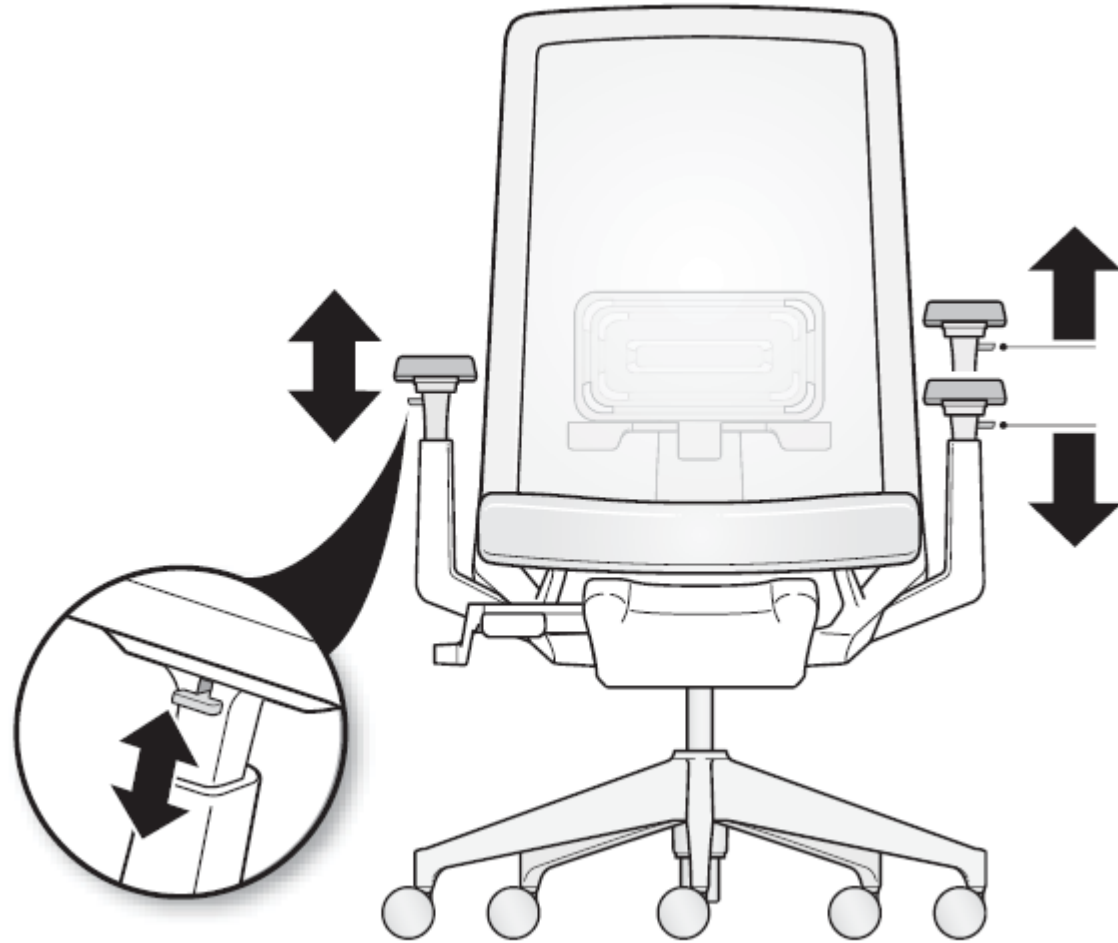
Optional 4D arm adjusts in 4 ways:

- Height adjustment 102mm
- Side-to-side arm cap adjustment range: 76 mm [38.1mm each arm cap]
- Front-to back adjustment range: 89mm
- Pivoting 20° in and 20° out



Height adjustable arm (optional)

- Optional height adjustable arms adjust 102 mm vertically.



Lumbar support (optional)

- Asymmetrical Left/right Lumbar Adjustment adjusts 102mm in height, flexible lumbar support with depth adjustment.



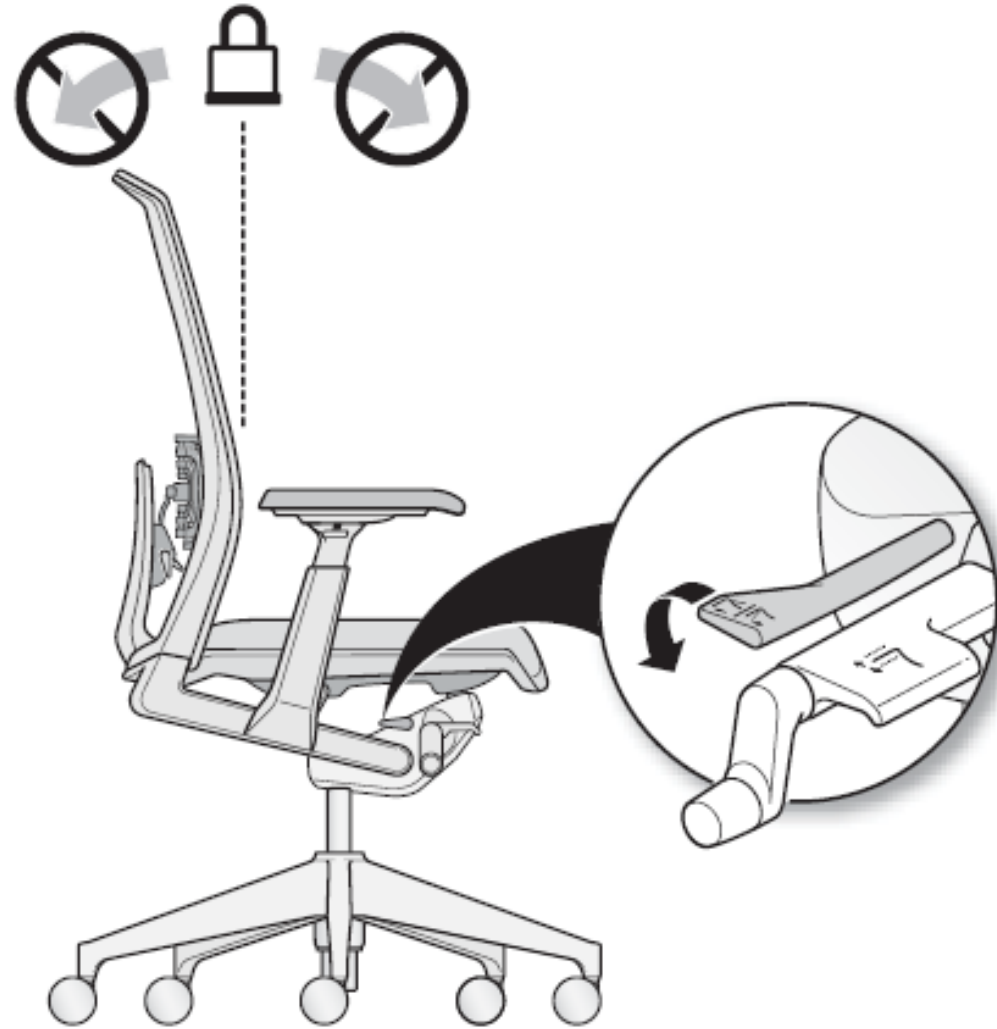
Forward tilt (optional)

- Optional forward tilt allows seat pan to move -5° downward from the initial position.



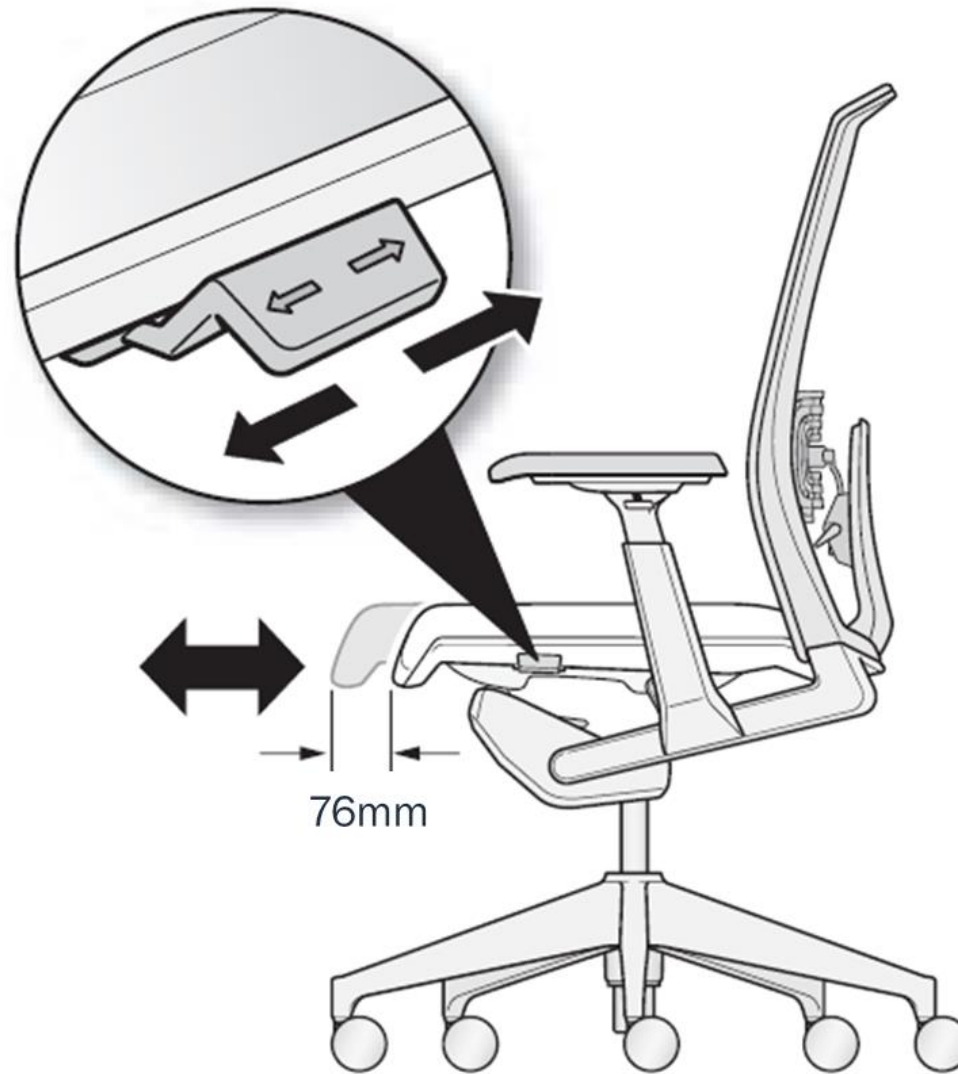
Back Lock

- Single position Back Lock.
- Allows users to lock the back of the chair in the upright position for tasking application



Seat depth adjustment (optional)

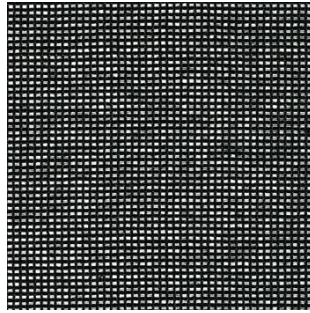
- Optional seat depth has 76mm seat depth range. Fixed seat also available.



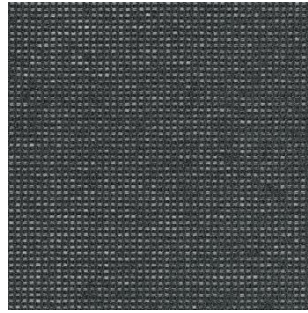
Colors and Materials

Colors & Materials

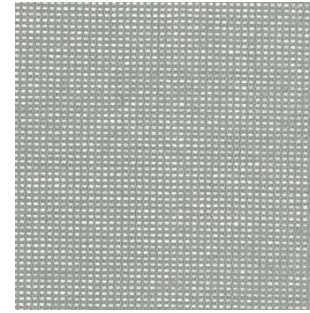
Very Mesh



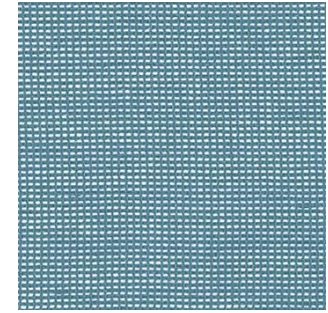
MS00F Black



MS007 Fog



MS0FJ Slate



MS0HR Heron

Colors & Materials Very Task Finishes

Plastic Frame

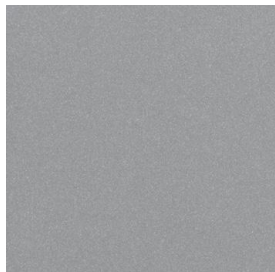


Black
TR00F



Fog
TR007

Aluminum Base



Metallic Silver
TROLE



Matte EU Black
TRMTB



Polished Aluminum
PM00P

Plastic Base



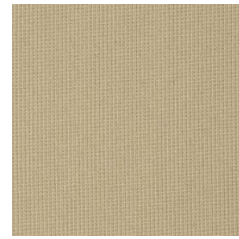
Black
TR00F



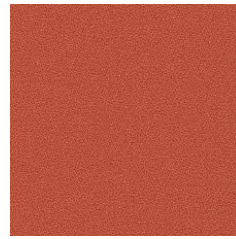
Fog
TR007

Colors & Materials

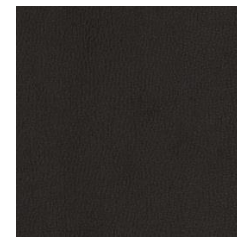
Very Task Seat upholstery



Gauge



Tellure



Wellington faux
leather



Lucia II



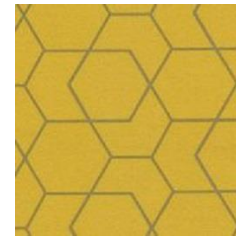
EVV



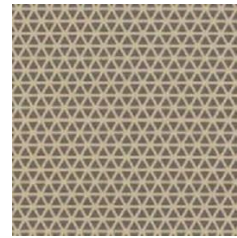
Focus*



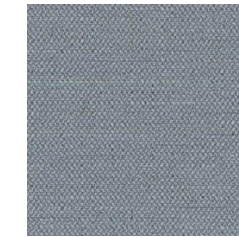
Medley



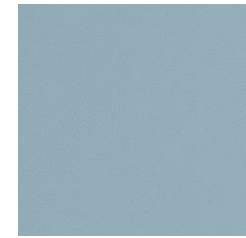
Angle printing



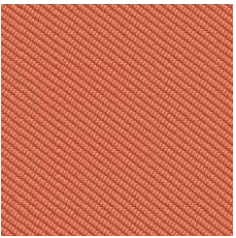
Visa printing



Era*



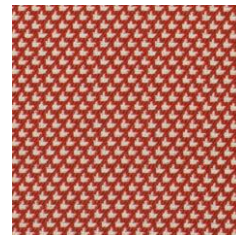
Obika faux
leather*



Oceanic*



Small Arrow*



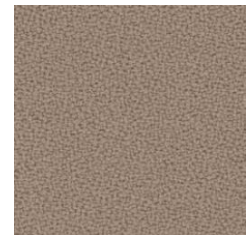
Diagonale*



Synergy*



Blazer



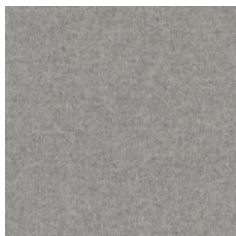
New Aquarius



Relate*



Atlas*



Divina
Melange 3*



Steelcut Trio
3*



Hallingdal
65



Remix 3*



AP Leather

*seat pad only

Applications

HAWORTH

Meeting rooms



HAWORTH

Cafeteria



HAWORTH

Collaborative space



HAWORTH

Training rooms



HAWORTH

Touchdown space



HAWORTH

Assigned workspace



HAWORTH

Hotel rooms and home offices



Certificates and Awards

Certificates

- GreenGuard
- Greenuard Gold
- BIFMA Level
- BIFMA x5.1
- AFRDI
- GECA



Blue Tick
Product
Certification

Awards

- Best of NeoCon Silver, 2008
- Best of NeoCon Gold, 2010
- IDEA (Industrial Design Excellence Award), 2010
- Red Dot Award, 2010



Very Wire Stacking chair:
Best of NeoCon
Gold 2008



Very Conference chair:
Best of NeoCon
Silver 2008



red dot
design award

Thank you!