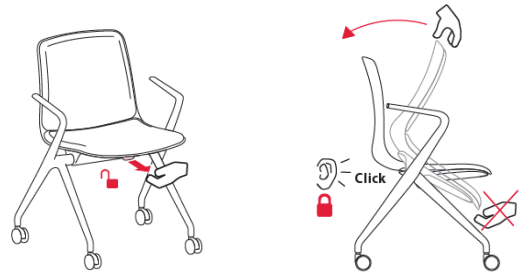


1 Seat lock and unlock

Pull the lever forward to unlock the seat for seat inclination and nesting. Pull the seat upward until there is a clicking sound, to lock it. (Please don't hold the lever when pulling the seat upward)

椅座锁定和解锁

将调节把手往前扳动解锁椅座，使椅座往下倾斜，即可将多把椅子嵌套在一起。将椅座往上翻动，直到听到卡嗒声，以锁定椅座。（在将椅座往上翻动时，请勿扳调节把手）

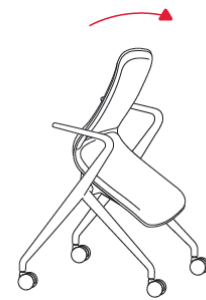


2 Nesting mechanism

When unlocked, the chair seat can be inclined for nesting.

嵌套机构

在解锁时，椅座可向下倾斜，从而将多把椅子嵌套在一起。

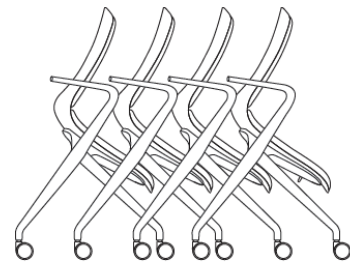


3 Nesting

Chairs can be nested together for space saving.

嵌套

多把椅子嵌套在一起可以节省空间。



4 Replace seat/back pads

The velcro fastener is a durable mechanical bonding that allows for easy re-release and therefore easy reupholstery. (1) Lift up the seat and /back pads by opening the velcro fasteners. (2) Replace the seat and /or back pads and fix them using the Velcro fasteners. (Make sure that the replaced pads are securely fastened and cannot move.)

替换座垫/背垫

软包座垫/背垫与椅子之间采用了可靠的蘑菇扣粘合，使软包垫可轻松拆下并替换。(1)往上掀座垫/背垫，即可打开蘑菇扣 (2)替换上新的座垫/背垫时往下按压，使蘑菇扣能够充分咬合，确保座垫/背垫固定到位、不移位。

