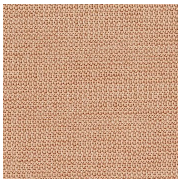
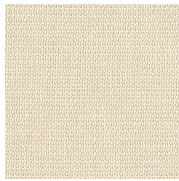


Sisal (SW)

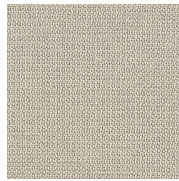
Vertical Fabrics | Grade C



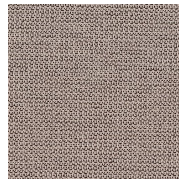
Alder
SW-AL



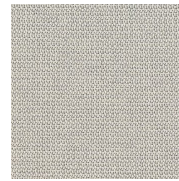
Ash
SW-AS



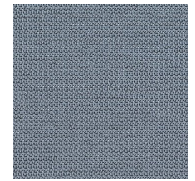
Buckhorn
SW-BC



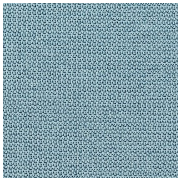
Cutch
SW-CT



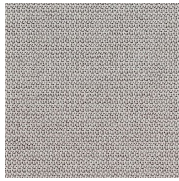
Gibbsite
SW-BB



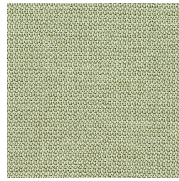
Indigo
SW-ND



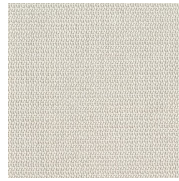
Knotweed
SW-KN



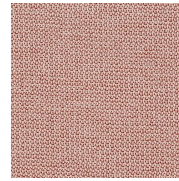
Lichen
SW-LC



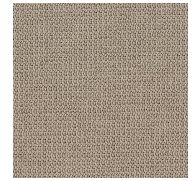
Plant
SW-PL



Quill
SW-LL



Rubia
SW-RB



Walnut
SW-WL

HAWORTH

Sisal (SW)

Specifications

Color Code	Color Name
SW-AL	Alder
SW-AS	Ash
SW-BC	Buckhorn
SW-CT	Cutch
SW-BB	Gibbsite
SW-ND	Indigo
SW-KN	Knotweed
SW-LC	Lichen
SW-PL	Plant
SW-LL	Quill
SW-RB	Rubia
SW-WL	Walnut

Details

Brand	N/A
Grade	C
Program	Standard

Technical Information

Composition	WOVEN
Content	43% VIRGIN POLYESTER
Content	57% REPREVE POLYESTER
Width	66 in
Pattern Repeat H	NO REPEAT
Pattern Repeat V	NO REPEAT
Directional	SEMI_DIR
Image Shown	Downroll
Weight (Per Linear Yard)	11.5 OZ
Backing	No



Haworth fabrics meet or exceed ACT Standards

All colorways are subject to dye lot variation

For additional information or product availability go to surfaces.haworth.com Technical information subject to change.

HAWORTH is a registered trademark of Haworth, Inc.

© Haworth, Inc. All right reserved. 2020 6.20

[haworth.com/surfaces](https://surfaces.haworth.com) | 800 344 2600