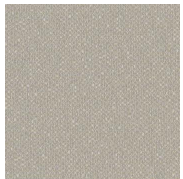


# Tailored (PY)

Vertical Fabrics | Grade A



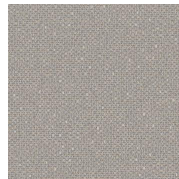
Alter  
PY-AL



Buttons  
PY-BU



Draper  
PY-DR



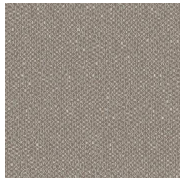
French Chalk  
PY-FC



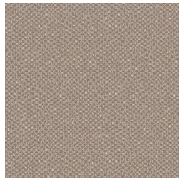
Hem  
PY-HE



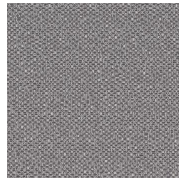
Mannequin  
PY-MA



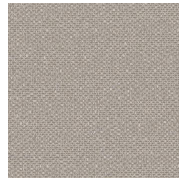
Seam  
PY-SE



Shears  
PY-SH



Suit  
PY-SU



Thread  
PY-TH



Tradition  
PY-TR

HAWORTH

# Tailored (PY)

## Specifications

Color Code	Color Name
PY-AL	Alter
PY-BU	Buttons
PY-DR	Draper
PY-FC	French Chalk
PY-HE	Hem
PY-MA	Mannequin
PY-SE	Seam
PY-SH	Shears
PY-SU	Suit
PY-TH	Thread
PY-TR	Tradition

## Details

Brand	N/A
Grade	A
Program	Standard

## Technical Information

Composition	WOVEN
Content	100% POST CON RECYCLED POLY
Width	66 in
Pattern Repeat H	9.5 in
Pattern Repeat V	3.75 in
Directional	Yes
Image Shown	Downroll
Weight (Per Linear Yard)	11 OZ
Backing	Yes



Haworth fabrics meet or exceed ACT Standards

All colorways are subject to dye lot variation

For additional information or product availability go to [surfaces.haworth.com](https://surfaces.haworth.com) Technical information subject to change.

HAWORTH is a registered trademark of Haworth, Inc.

© Haworth, Inc. All right reserved. 2020 6.20

[haworth.com/surfaces](https://haworth.com/surfaces) | 800 344 2600