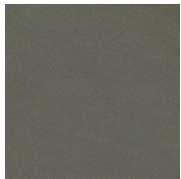


Endurance EPU

Seating Upholstery | Grade D



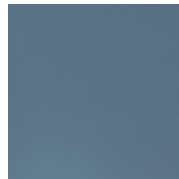
Armor
HHE-1739



Azure
HHE-1740



Bisque
HHE-1741



Bluebell
HHE-1742



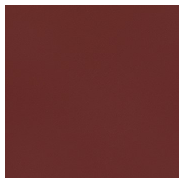
Bronze
HHE-1743



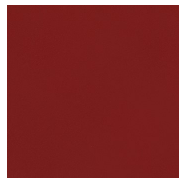
Cascade
HHE-1744



Chai
HHE-1745



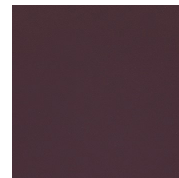
Cherry
HHE-1746



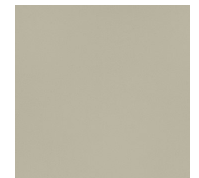
Claret
HHE-1747



Copper
HHE-1748



Currant
HHE-1749



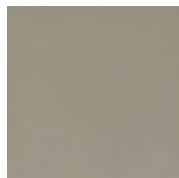
Dove
HHE-1750



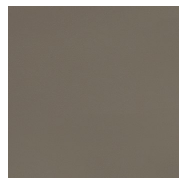
Ecrú
HHE-1751



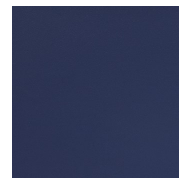
Gravel
HHE-1752



Gull
HHE-1753



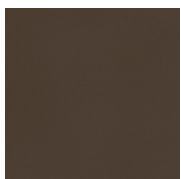
Heather
HHE-1754



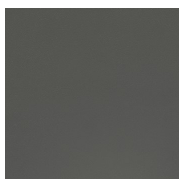
Ink
HHE-1755



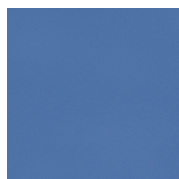
Ivory
HHE-1756



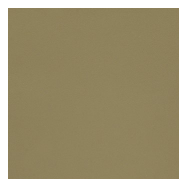
Java
HHE-1757



Jetty
HHE-1758



Lapis
HHE-1759



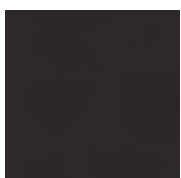
Lichen
HHE-1760



Loden
HHE-1761



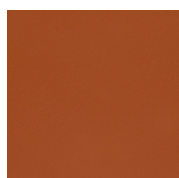
Neptune
HHE-1762



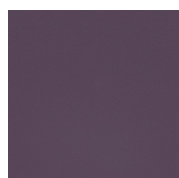
Noir
HHE-1763



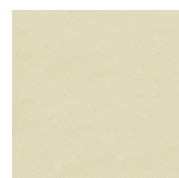
Nordic
HHE-1764



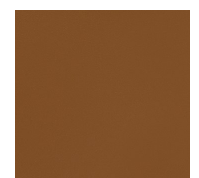
Paprika
HHE-1765



Plum
HHE-1766



Pyrite
HHE-1767



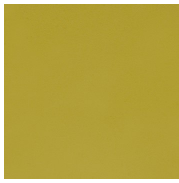
Saddle
HHE-1768



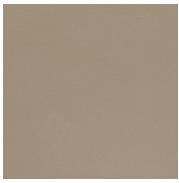
Seed
HHE-1769



Smith
HHE-1770



Sprout
HHE-1771



Taupe
HHE-1772



Tobacco
HHE-1773



Toffee
HHE-1774

HAWORTH

Endurance EPU

Specifications

| Color Code | Color Name |
|------------|------------|
| HHE-1739 | Armor |
| HHE-1740 | Azure |
| HHE-1741 | Bisque |
| HHE-1742 | Bluebell |
| HHE-1743 | Bronze |
| HHE-1744 | Cascade |
| HHE-1745 | Chai |
| HHE-1746 | Cherry |
| HHE-1747 | Claret |
| HHE-1748 | Copper |
| HHE-1749 | Currant |
| HHE-1750 | Dove |
| HHE-1751 | Ecru |
| HHE-1752 | Gravel |
| HHE-1753 | Gull |
| HHE-1754 | Heather |
| HHE-1755 | Ink |
| HHE-1756 | Ivory |
| HHE-1757 | Java |
| HHE-1758 | Jetty |
| HHE-1759 | Lapis |
| HHE-1760 | Lichen |
| HHE-1761 | Loden |
| HHE-1762 | Neptune |
| HHE-1763 | Noir |
| HHE-1764 | Nordic |
| HHE-1765 | Paprika |
| HHE-1766 | Plum |
| HHE-1767 | Pyrite |
| HHE-1768 | Saddle |
| HHE-1769 | Seed |
| HHE-1770 | Smith |

Details

| | |
|---------|----------|
| Brand | Momentum |
| Grade | D |
| Program | Alliance |

Technical Information

| | |
|--------------------------|-----------------------|
| Composition | Faux Leather |
| Content | 100% EPU POLYURETHANE |
| Width | 54 in |
| Pattern Repeat H | NO REPEAT |
| Pattern Repeat V | NO REPEAT |
| Directional | No |
| Image Shown | Downroll |
| Abrasion | 1,000,000 |
| Weight (Per Linear Yard) | 24.9 OZ |
| Backing | Yes |
| Flammability | TB117-2013 |



Haworth fabrics meet or exceed ACT Standards

All colorways are subject to dye lot variation

For additional information or product availability go to surfaces.haworth.com Technical information subject to change.

HAWORTH is a registered trademark of Haworth, Inc.

© Haworth, Inc. All right reserved. 2020 6.20

haworth.com/surfaces | 800 344 2600

| | |
|----------|---------|
| HHE-1771 | Sprout |
| HHE-1772 | Taupe |
| HHE-1773 | Tobacco |
| HHE-1774 | Toffee |