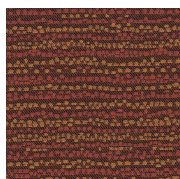
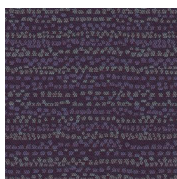


# Dottie (ME)

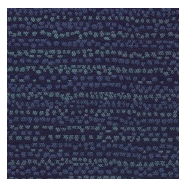
Seating Upholstery | Grade B



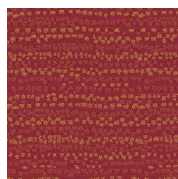
Calico  
ME-CA



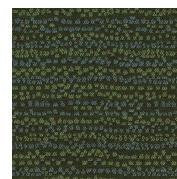
Chads  
ME-C



Dew Drops  
ME-DD



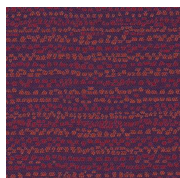
Flecks  
ME-F



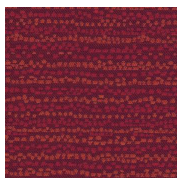
Morse  
ME-M



Pip  
ME-P



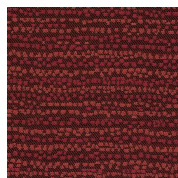
Polka Dots  
ME-PD



Roulette  
ME-R



Tabby  
ME-T



Yahtzee  
ME-Y

HAWORTH

# Dottie (ME)

## Specifications

Color Code	Color Name
ME-CA	Calico
ME-C	Chads
ME-DD	Dew Drops
ME-F	Flecks
ME-M	Morse
ME-P	Pip
ME-PD	Polka Dots
ME-R	Roulette
ME-T	Tabby
ME-Y	Yahtzee

## Details

Brand	N/A
Grade	B
Program	Standard

## Technical Information

Composition	WOVEN
Content	11% POST CON RECYCLED POLY
Content	89% POST IND RECYCLED POLY
Width	54 in
Pattern Repeat H	6.75 in
Pattern Repeat V	8 in
Directional	Yes
Image Shown	Downroll
Abrasion	80,000
Weight (Per Linear Yard)	10.0 OZ
Lightfastness	CLASS 5 MIN @ 40 HOURS
Backing	Yes
Flammability	TB117-2013



Haworth fabrics meet or exceed ACT Standards

All colorways are subject to dye lot variation

HAWORTH is a registered trademark of Haworth, Inc.

© Haworth, Inc. All right reserved. 2020 6.20

haworth.com/surfaces | 800 344 2600

For additional information or product availability go to [surfaces.haworth.com](https://surfaces.haworth.com) Technical information subject to change.

**HAWORTH** is a registered trademark of Haworth, Inc.

© Haworth, Inc. All right reserved. 2020 6.20

[haworth.com/surfaces](https://haworth.com/surfaces) | 800 344 2600