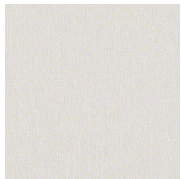
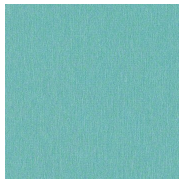


Mica 2.0

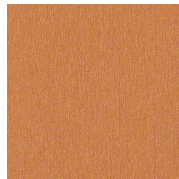
Seating Upholstery | Grade D



Aluminum
HHE-1345



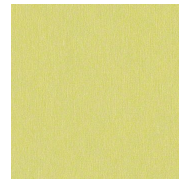
Amazonite
HHE-1346



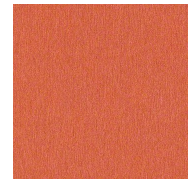
Amber
HHE-1347



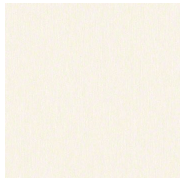
Bronze
HHE-1348



Chartreuse
HHE-1349



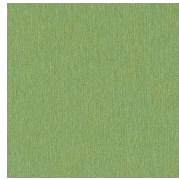
Coral
HHE-1350



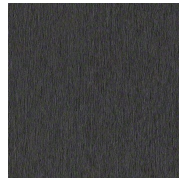
Ecru
HHE-1352



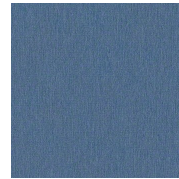
Fossil
HHE-1353



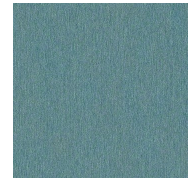
Grass
HHE-1354



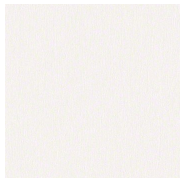
Ink
HHE-1355



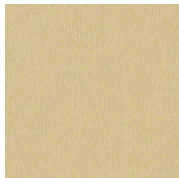
Lapis
HHE-1356



Marine
HHE-1357



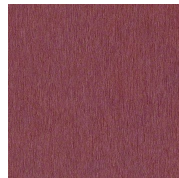
Opal
HHE-1358



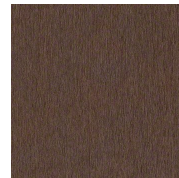
Sand
HHE-1359



Shore
HHE-1360



Syrah
HHE-1361



Terra
HHE-1362



Titanium
HHE-1363

HAWORTH

Mica 2.0

Specifications

Color Code	Color Name
HHE-1345	Aluminum
HHE-1346	Amazonite
HHE-1347	Amber
HHE-1348	Bronze
HHE-1349	Chartreuse
HHE-1350	Coral
HHE-1352	Ecru
HHE-1353	Fossil
HHE-1354	Grass
HHE-1355	Ink
HHE-1356	Lapis
HHE-1357	Marine
HHE-1358	Opal
HHE-1359	Sand
HHE-1360	Shore
HHE-1361	Syrah
HHE-1362	Terra
HHE-1363	Titanium

Details

Brand	Cf Stinson
Grade	D
Program	Alliance

Technical Information

Composition	Faux Leather
Content	100% VINYL FACE
Content	POLYESTER KNIT BACK
Width	54 in
Pattern Repeat H	NO REPEAT
Pattern Repeat V	NO REPEAT
Directional	No
Image Shown	Downroll
Abrasion	100,000
Weight (Per Linear Yard)	30 OZ
Backing	Yes
Flammability	TB117-2013



Haworth fabrics meet or exceed ACT Standards

All colorways are subject to dye lot variation

For additional information or product availability go to surfaces.haworth.com Technical information subject to change.

HAWORTH is a registered trademark of Haworth, Inc.

© Haworth, Inc. All right reserved. 2020 6.20

haworth.com/surfaces | 800 344 2600