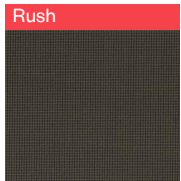
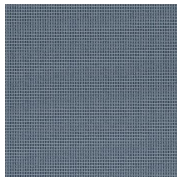


Hue (RAILROAD)

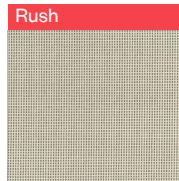
Vertical Fabrics | Grade B



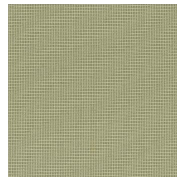
Bark (RR)
RR-56



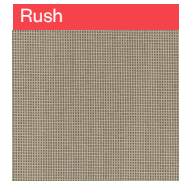
Eddy (RR)
RR-57



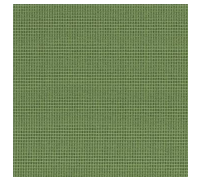
Froth (RR)
RR-58



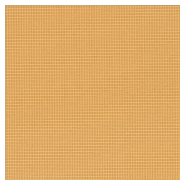
Ginko (RR)
RR-59



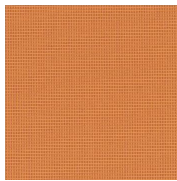
Latte (RR)
RR-62



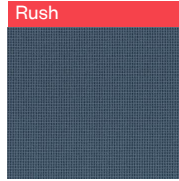
Leaf (RR)
RR-60



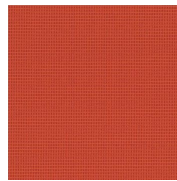
Lemon (RR)
RR-61



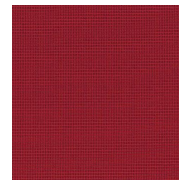
Marigold (RR)
RR-63



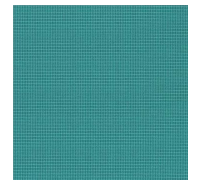
Marine (RR)
RR-64



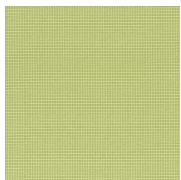
Poppy (RR)
RR-65



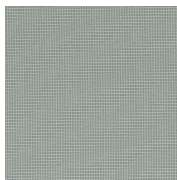
Red (RR)
RR-66



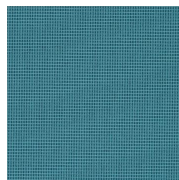
Seaside (RR)
RR-68



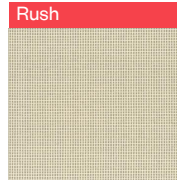
Spring (RR)
RR-67



Steam (RR)
RR-69



Turquoise (RR)
RR-70



Wisp (RR)
RR-71

HAWORTH

Hue (RAILROAD)

Specifications

Color Code	Color Name
RR-56	Bark (RR)
RR-57	Eddy (RR)
RR-58	Froth (RR)
RR-59	Ginko (RR)
RR-62	Latte (RR)
RR-60	Leaf (RR)
RR-61	Lemon (RR)
RR-63	Marigold (RR)
RR-64	Marine (RR)
RR-65	Poppy (RR)
RR-66	Red (RR)
RR-68	Seaside (RR)
RR-67	Spring (RR)
RR-69	Steam (RR)
RR-70	Turquoise (RR)
RR-71	Wisp (RR)

Details

Brand	N/A
Grade	B
Program	Standard

Technical Information

Composition	Woven
Content	38% VIRGIN POLYESTER
Content	62% ANTIMONY FREE POLYESTER
Width	66 in
Pattern Repeat H	NO REPEAT
Pattern Repeat V	NO REPEAT
Directional	Yes
Image Shown	Railroad
Weight (Per Linear Yard)	13.6 OZ
Backing	Yes
Flammability	Yes



Haworth fabrics meet or exceed ACT Standards

All colorways are subject to dye lot variation

For additional information or product availability go to surfaces.haworth.com Technical information subject to change.

HAWORTH is a registered trademark of Haworth, Inc.

© Haworth, Inc. All right reserved. 2020 6.20

surfaces.haworth.com | 800 344 2600