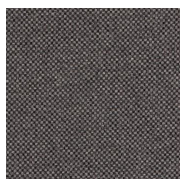
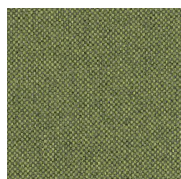


# Class II (66)

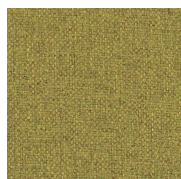
Seating Upholstery | Grade D



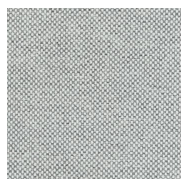
Dark Grey  
66-DG



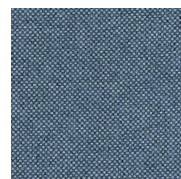
Green  
66-GR



Green Multi  
66-GM



Light Cool Neutral  
66-LN



Medium Blue  
66-MB



Medium Warm  
Neutral  
66-MN



Reddish Orange  
66-RR

HAWORTH

# Class II (66)

## Specifications

Color Code	Color Name
66-DG	Dark Grey
66-GR	Green
66-GM	Green Multi
66-LN	Light Cool Neutral
66-MB	Medium Blue
66-MN	Medium Warm Neutral
66-RR	Reddish Orange

## Details

Brand	N/A
Grade	D
Program	Standard

## Technical Information

Composition	WOVEN
Content	100% POLYESTER
Width	54 in
Pattern Repeat H	NO REPEAT
Pattern Repeat V	NO REPEAT
Directional	Yes
Image Shown	Downroll
Abrasion	100,000
Weight (Per Linear Yard)	23.14 OZ
Backing	Yes
Flammability	



Haworth fabrics meet or exceed ACT Standards

All colorways are subject to dye lot variation

For additional information or product availability go to [surfaces.haworth.com](https://surfaces.haworth.com) Technical information subject to change.

HAWORTH is a registered trademark of Haworth, Inc.

© Haworth, Inc. All right reserved. 2020 6.20

[haworth.com/surfaces](https://surfaces.haworth.com) | 800 344 2600