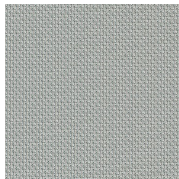


Fields (RAILROAD)

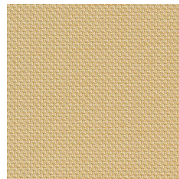
Vertical Fabrics | Grade B



Alfalfa (RR)
RR-294



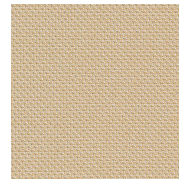
Blueberry (RR)
RR-295



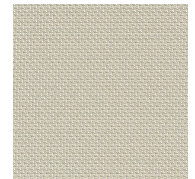
Corn (RR)
RR-296



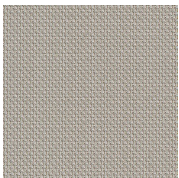
Cotton (RR)
RR-297



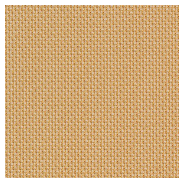
Oats (RR)
RR-298



Plow (RR)
RR-299



Prairie (RR)
RR-300



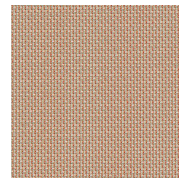
Pumpkin (RR)
RR-301



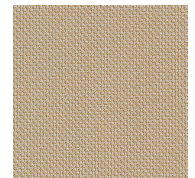
Scarecrow (RR)
RR-302



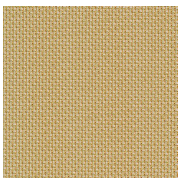
Soy (RR)
RR-303



Strawberry (RR)
RR-304



Till (RR)
RR-305



Wheat (RR)
RR-306

HAWORTH

Fields (RAILROAD)

Specifications

Color Code	Color Name
RR-294	Alfalfa (RR)
RR-295	Blueberry (RR)
RR-296	Corn (RR)
RR-297	Cotton (RR)
RR-298	Oats (RR)
RR-299	Plow (RR)
RR-300	Prairie (RR)
RR-301	Pumpkin (RR)
RR-302	Scarecrow (RR)
RR-303	Soy (RR)
RR-304	Strawberry (RR)
RR-305	Till (RR)
RR-306	Wheat (RR)

Details

Brand	N/A
Grade	B
Program	Standard

Technical Information

Composition	Woven
Content	50% POST CON RECYCLED POLY
Content	50% VIRGIN POLYESTER
Width	66 in
Pattern Repeat H	0.18 in
Pattern Repeat V	0.17 in
Directional	Yes
Image Shown	Railroad
Weight (Per Linear Yard)	12.6 OZ
Lightfastness	CLASS 4 @ 40 HRS
Backing	Yes
Flammability	Yes



Haworth fabrics meet or exceed ACT Standards

All colorways are subject to dye lot variation

HAWORTH is a registered trademark of Haworth, Inc.

© Haworth, Inc. All right reserved. 2020 6.20

haworth.com/surfaces | 800 344 2600

For additional information or product availability go to surfaces.haworth.com Technical information subject to change.

HAWORTH is a registered trademark of Haworth, Inc.

© Haworth, Inc. All right reserved. 2020 6.20

haworth.com/surfaces | 800 344 2600