

TecCrete®

HAWORTH®







The world leader in programmable logic solutions, Xilinx, designed their 130,000 sq ft Colorado campus with an emphasis on flexibility, efficiency, and employee comfort. TecCrete access flooring is just one of many Haworth products used in the space. For maximum thermal comfort, TecCrete allows flexible air vent placement. Adjustable swirl diffusers let users control the temperature in their own spaces. TecCrete is shown here with decorative stone.

Holabird and Root headquarters in Chicago's Marquette Building. Built in 1895, the space was encumbered by decades of old flooring—layer upon layer of carpet, wood, and tile. During their 2006 renovation, the firm chose TecCrete access flooring, shown bare here, as a clean base. This also helped save money by allowing power and data to be run under the floor.





## Access flooring for the office, computer room—anywhere you need it.

Lay the foundation for a smarter, more sustainable space with TecCrete access flooring. TecCrete is ideal for offices, schools, libraries, computer rooms, museums, casinos—any environment that requires a strong, quiet access floor. The exposed concrete surface offers a unique aesthetic that's beautiful enough to leave bare. Or, finish it with modular carpet, laminate, vinyl, rubber, or just about any material you like. Whatever you choose, the result is a surface that feels rock solid underfoot—unlike ordinary steel access floors.

### TecCrete Advantages:

#### **Superior Durability**

TecCrete is the strongest and most durable access flooring system in its class. Available in 1,250, 1,500, and 2,000 lb point load ratings, TecCrete can be specified for finished floor heights from 3" to 68".

#### **America's Greenest Access Floor**

Not only does TecCrete contain 58% recycled content, it's achieved SCS Indoor Advantage™ Gold certification. What's more, it's the only American-made access floor manufactured in a zero-landfill facility.

#### **Endless Options**

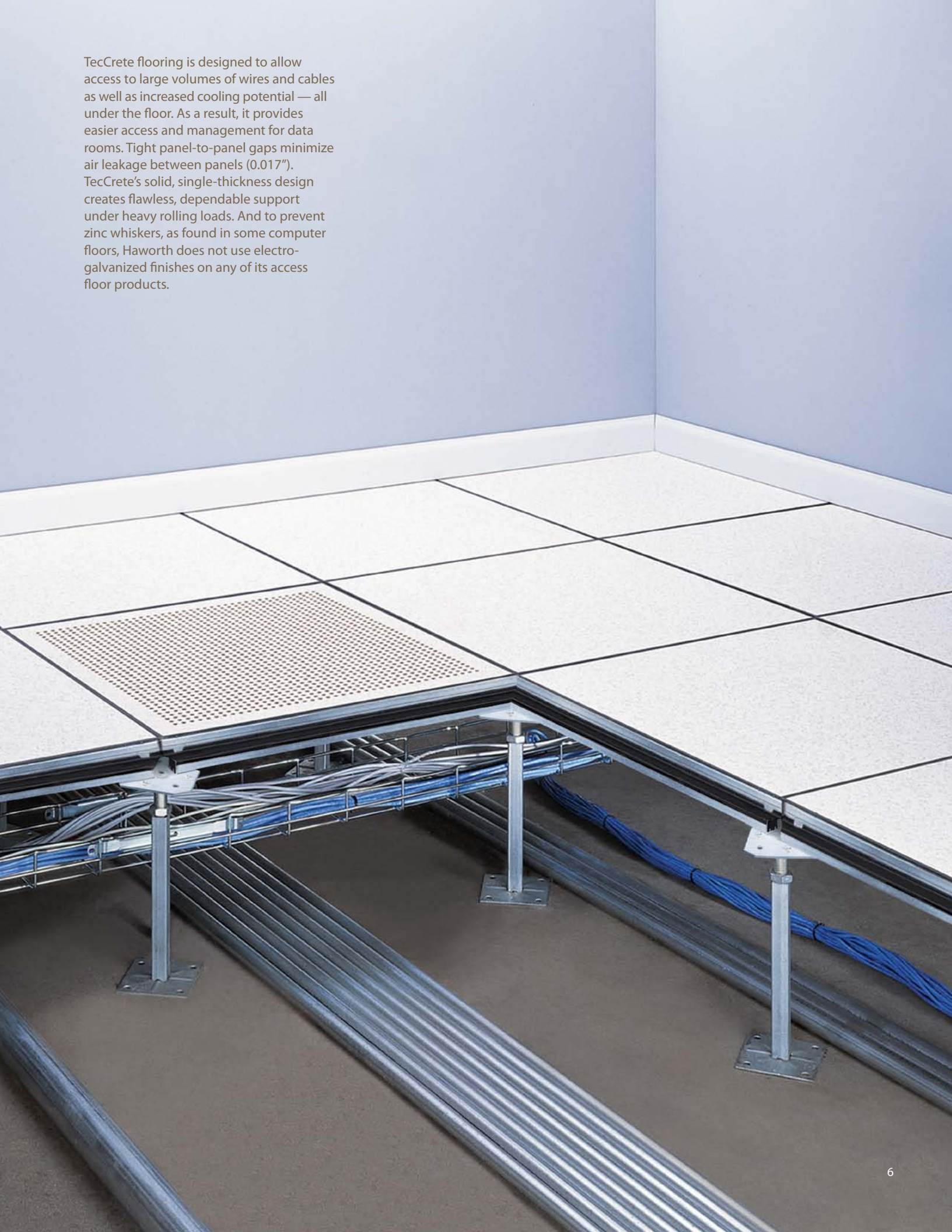
*For work and learning environments,* TecCrete can be left bare and coated in the field with stains or sealants. It can be field-covered with modular carpet or factory-finished with a variety of decorative surfaces.

*For data center and utility environments,* panels can be factory-finished with laminate or vinyl. Stringer-supported and cornerlock understructure systems are available for all applications. It also includes a full range of data center accessories including ramps and high-performance airflow panels.

#### **Underfloor Features**

Tight panel gap tolerances and a flat underside make TecCrete ideal for underfloor air distribution. Add Haworth's Power Base® AI system for modular power, as well as voice and data, and you have an adaptable utilities distribution platform that can lower the cost of change, enhance occupant comfort, reduce energy consumption, and enable a smarter, more sustainable workspace.

TecCrete flooring is designed to allow access to large volumes of wires and cables as well as increased cooling potential — all under the floor. As a result, it provides easier access and management for data rooms. Tight panel-to-panel gaps minimize air leakage between panels (0.017"). TecCrete's solid, single-thickness design creates flawless, dependable support under heavy rolling loads. And to prevent zinc whiskers, as found in some computer floors, Haworth does not use electro-galvanized finishes on any of its access floor products.



## Raise your sustainability.

From the way it's manufactured to creating a more efficient, healthy workspace, TecCrete access flooring contributes to a more sustainable environment.

Manufactured fully in the United States, TecCrete is produced in an ISO 9001:2000 and 14001 certified, zero-landfill facility. This means nothing from the plant—not even lunch waste—goes to a landfill.

Once installed, TecCrete promotes a more efficient environment and, when combined with underfloor air, can play a key role in LEED® certification. In fact, this contributes to more than 20% of the LEED points earned by many Haworth locations.

### TecCrete Sustainability Advantages:

**Energy Savings:** TecCrete enables underfloor air distribution, which can reduce energy costs required to cool interior spaces by 5 to 30%.

**Reuse Efficiency:** 100% reusable, TecCrete can be easily reconfigured for a longer lifespan.

**Recycled Content:** A typical installation contains 49% pre-consumer and 9% post-consumer content.

**Minimal Waste:** Installing modular power and data systems beneath the floor eliminates conduit and wiring waste.

**Regional Materials:** TecCrete products are produced in Kentwood, Michigan—within 500 miles of approximately 50% of the U.S. population.

**Improved Indoor Air Quality:** Low-emitting TecCrete floors are SCS Indoor Advantage Gold certified, assuring that they meet tough indoor air quality standards.

**Thermal Comfort:** Underfloor air distribution using swirl diffusers provides occupant-controlled airflow for greater comfort and a more even temperature throughout the space.

**Daylight and Views:** Combining TecCrete floors with underfloor air distribution can reduce the vertical space needed for ductwork by up to 80%, increasing the overall height of the wall available for glazing while reducing the overall height of the building.

TecCrete, along with underfloor air and modular power distribution, creates a more sustainable solution during the construction and operation of a building.



## Structurally sound.

### Durable

Unlike a steel access floor, TecCrete's weldless construction can handle the heavy rolling and impact loads that occur during construction, move-in, and reconfiguration—without weld points breaking, surface denting, or dishing.

### Safety and Performance

When compared to the equivalent cement-filled steel panel, TecCrete offers 20% better 10-pass rolling load performance. In addition, TecCrete has a proven record of performance and safety with no reported failures after more than 25 years and tens of millions of square feet installed.

### Flat Underside

While steel panels commonly feature a cupped underside, the TecCrete panel's underside is flat, resulting in less installation expense and more reliable sealing of underfloor plenum dividers. The flat underside also allows for pedestal placement anywhere under the panel, making support of partial panels at walls and columns easier and more secure. In addition, the tight panel-to-panel gaps do not allow air to escape.

### Fire Rating

TecCrete meets Class A requirements for flame spread and smoke development in accordance with ASTM-E84-1998. TecCrete is also non-combustible as defined by the requirements of ASTM E136.

### Ramping

TecCrete provides all the parts needed to specify and build ramps as needed.

### Panel Strength

Concrete-and-steel panels are the most rigid in the industry, offering 50% less flex than other options. TecCrete eliminates the feeling of being on an access floor.

### Adjustable Height

Pedestals offer 1 - 2" adjustment range to easily accommodate irregular subfloors.



1 Power Base Floor Box



2 Pre-Terminated Zone



3 Power Base Zone Box



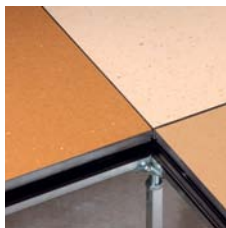
4 Underfloor Air



5 Laminate with Stringer



6 Pedestal Base



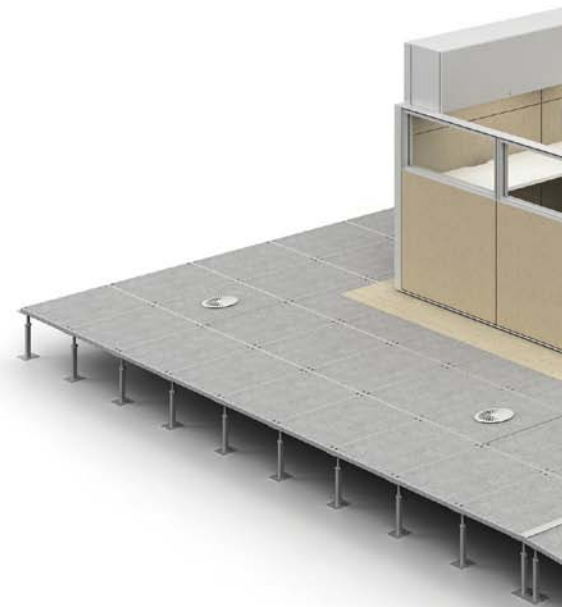
Color Vinyl



Air Seal



Air Flow

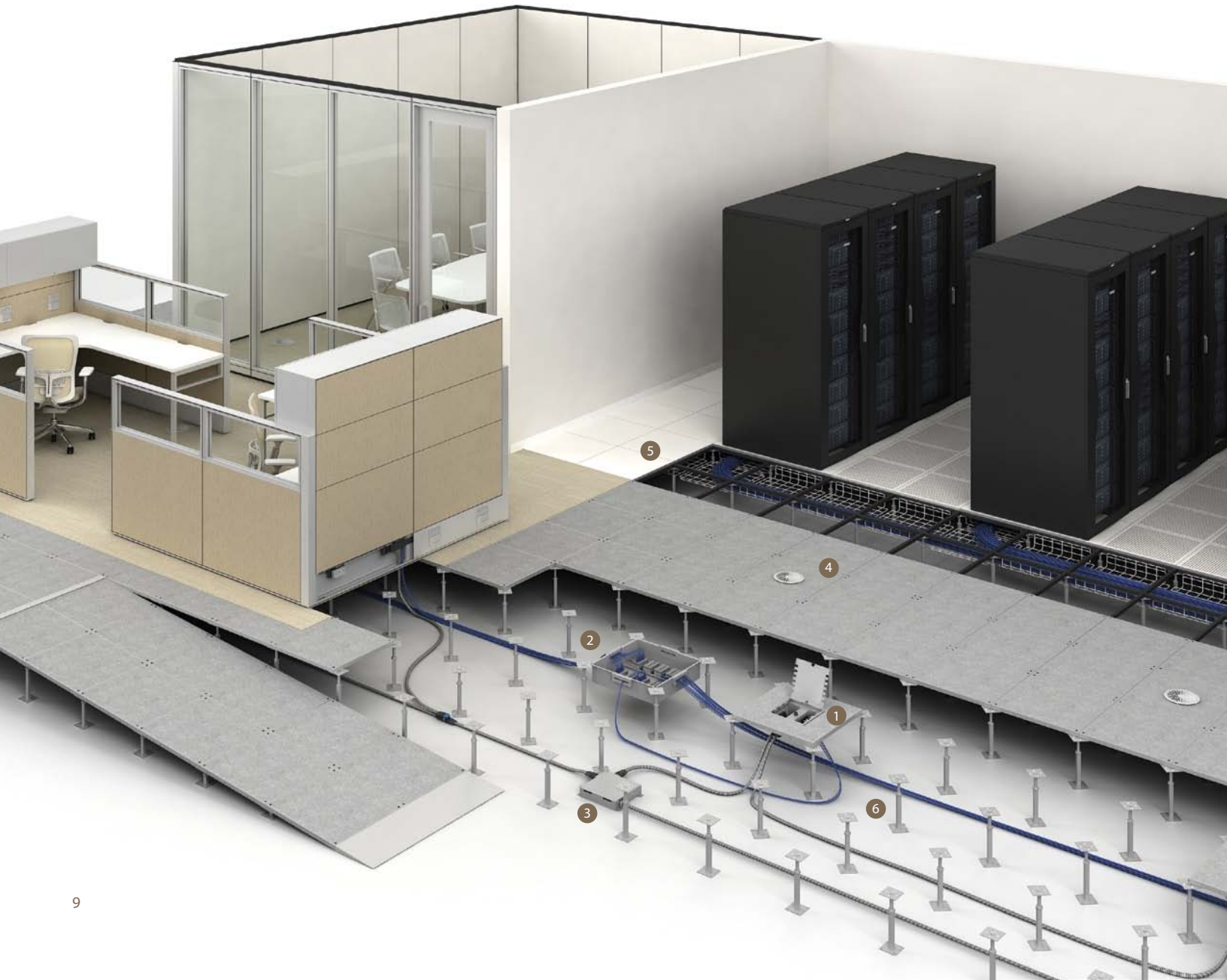


### Stands Up to Heavy Loads

Available with a concentrated load of 1,250, 1,500, and 2,000 lb, TecCrete can withstand the heavy rolling and impact loads that occur during construction without permanently denting or bowing.

System Performance		Static Load Rating				Dynamic Load Rating	
Panel	Base Type	Concentrated	Uniform	Impact	Ultimate	Rolling 10-Pass	Rolling 10,000-Pass
1,250/1,500 lb	Cornerlock	1,250 lb	440 lb/sq ft	150	1,800 lb*	1,200	800
	With Stringer	1,500 lb	700 lb/sq ft	150	2,500 lb	1,500	1,250
2,000 lb	With Stringer	2,000 lb	800 lb/sq ft	150	2,800 lb	1,500	1,250

\*The 1,250/1,500 cornerlock panel system is designed to meet an 1,800 lb ultimate load based on internal testing.





## TecCrete access flooring makes news with The New York Times Company.

The New York Times Building, designed by Pritzker Prize-winning architect Renzo Piano in association with FXFOWLE Architects, opened in 2007 to rave reviews.

Towering over Times Square, the technologically innovative building, co-owned by The New York Times Company and Forest City Ratner Companies, features a number of environmentally sustainable innovations, such as an open-air birch garden, an on-site cogeneration plant, lighting and shading systems that work in concert to ensure that the building efficiently uses natural light, a double-skin curtain wall that acts as a sun shade while enhancing daylight and views, and an underfloor air distribution system that makes use of TecCrete access flooring in the Times Company's space.

Throughout more than 700,000 square feet of the Times Company's space, TecCrete provides ready access to power, voice, and data cabling, as well as HVAC.

TecCrete was chosen because its flat underside simplifies the installation and sealing of the underfloor space. Tight air seals ensure that static pressure can be handled at all levels. Plus, the building's versatile underfloor air delivery system means air can be distributed at 68°F—10 degrees warmer than a typical system. This not only saves energy in air conditioning, it ensures a much more easily regulated and comfortable temperature throughout.

What's more, TecCrete allowed installers to complete their work more efficiently and with less waste, and ensures easy changes throughout the life of the building.

# HAWORTH®

For more information call 800.344.2600 or 616.393.3000.  
Download additional copies at [haworth.com](http://haworth.com).

This brochure is printed on FSC certified U2®:XG™, manufactured with electricity in the form of renewable energy (wind, hydro, biogas) and contains a minimum of 30% post-consumer recovered fiber. FSC is the global benchmark for responsible forest management.



Haworth is a registered trademark of Haworth, Inc.  
Printed in USA ©Haworth, Inc. 2009 06.09 Item #0726

[haworth.com](http://haworth.com) | [haworth-europe.com](http://haworth-europe.com) | [haworth-asia.com](http://haworth-asia.com)