

Anyway Connect



Anyway Connect meeting and conference tables impress with their clear shapes and timeless design. The range is deliberately kept simple and clear. Characterised by their high stability, the frame consists of an internal truss system that holds the A-feet.

Features

- Versatile shapes: variety of options available including round, square, rectangular, arch, boat and oval, all with rounded corners
- Varied worktop materials available including melamine, veneer and fenix
- Elevated options: choose between height options ranging from 74.5 and 105.5 cm
- Broad electrification and cable management options

Statement of Line

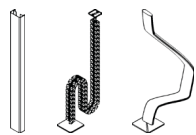


Design

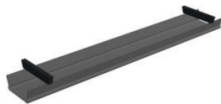
Haworth Design Studio

Product		Dimensions	Material*
	Meeting Points with Round or Square tops	Round Tops Table Top Ø: 120 cm Fixed Height: 74,5 cm	Top: Melamine Edelweiss EC White Dark Grey Light Grey Sand Lava Oak Maple Walnut
		Square Tops Table top Width: 120 cm Table top Depth: 120 cm Fixed Height: 74,5 cm	
	Meeting tables rectangular tops, with 4 or 6 legs	4 Legs Width x Depth: 180x90/200x90/240x90/ 240x100 cm Fixed Height: 74,5/105,5 cm	Top: Veneer Natural Oak Black Oak Walnut
		6 Legs Width x Depth: 320x90/320x100/320x120 cm Fixed Height: 74,5 cm	
	Conference tables Different shaped tops available (A) Arch (B) Boat (C) Oval shaped	(A) Width x Depth: 240x100/240x110 cm Fixed height: 74,5 cm	Structure Structured White Structured Black * European Colour Collection www.haworth.com/eu/product/finishes
		(B) Width x Depth: 240x100/240x110/ 320x110/320x120 cm Fixed height: 74,5 cm	
		(C) Width x Depth: 200x100/200x110/ 260x110/260x120 cm Fixed Height: 74,5 cm	

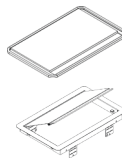
Accessories



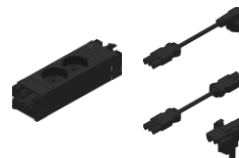
Vertical Cable Management
Magnetic duct
Vertebra duct
Cable sleeve



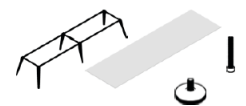
Horizontal Cable Management
Metallic
Universal



Cable Accessibility
Rectangular
EXIT ONE
EXIT DOUBLE



Electrification compatibility
Haworth standard electrification solutions



Spare Parts
Complete structures
individual worktops
Sets of screws and glides