

HAWORTH
camira



The Camira Collection

www.camirafabrics.com



From farm to fabric

With roots dating to 1783, we've had a belief that you "only ever get out what you put in," which is why so much of who we are goes into what we make. We put our heart and soul into making fabrics, but with a real sense of responsibility for the bigger picture from the raw materials we use to the manufacturing processes, and with the involvement of many different people from start to finish.

Sustainability looms large in our thinking. It goes to the core of who we are, what we do and the legacy we leave behind. It's reflected in the products we design, the materials we use and the time-honed skills which go into making yarn and fabric.

We have innovated a totally new category of materials using nature's finest and cleverest renewables – natural "bast" fibres from the stems of harvested plants and pure new wool. So our sustainable textile expertise goes right from farm to fabric and we handle everything in between.



camira

camira

Blazer

Description

Blazer is a classic pure new wool upholstery fabric with a billiard cloth felted finish. It is made from premium New Zealand lambswool, where responsible farming provides the highest quality raw material which is soft, clean and bright, which is ideal for spinning, weaving and dyeing. The color palette is an exciting mix of solids and mélanges across the full color spectrum, creating a versatile fabric suitable for wide-ranging furniture applications.

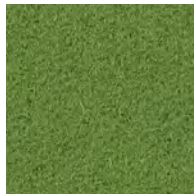


Technical Information

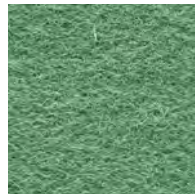
Composition	100% Pure New Wool
Environment	Certified to Indoor Advantage™ Gold Rapidly renewable and compostable Non metallic dyestuffs
Width	54 inches minimum
Weight	13 1/2 oz/sq yd ±5%
Abrasion	Independently certified to ≥75,000 double rubs
Flammability	California Technical Bulletin 117 - 2013 NFPA 260 + UFAC Class 1 BS 7176 Low Hazard ASTM E84 Class 1 or A (Adhered) ASTM E84 Class 1 or A (Un-adhered) IMO FTP Code (Part 8) NFPA 701 when treated



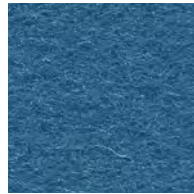
Cardiff CUZ1N



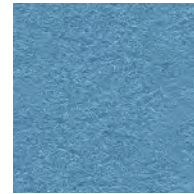
Bryanston CUZ53



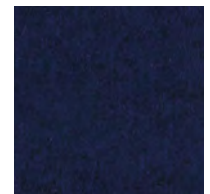
Tyndale CUZ2Y



Vassar CUZ2U



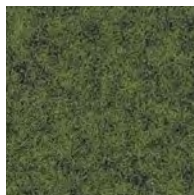
Marymount CUZ3C



Oxford CUZ09



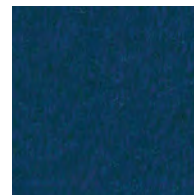
Surrey CUZ1E



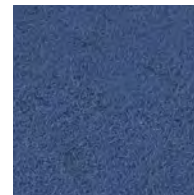
Camphill CUZ1K



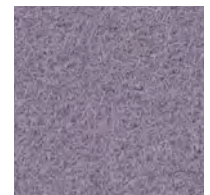
Latymer CUZ33



Knightsbridge CUZ26



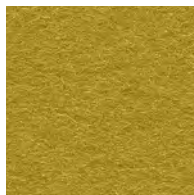
Manchester CUZ1V



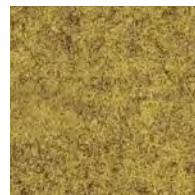
Sheffield CUZ1T



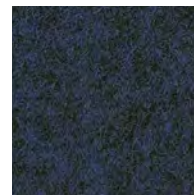
Wesley CUZ82



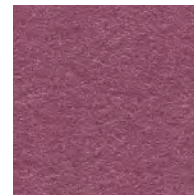
Eynesbury CUZ2W



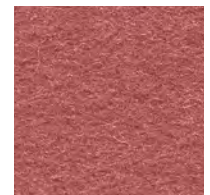
Dunhurst CUZ58



Newcastle CUZ1W



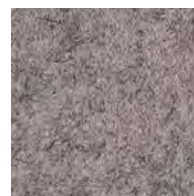
Barnard CUZ2S



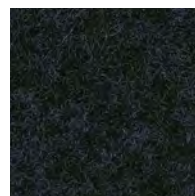
Barlborough CUZ3D



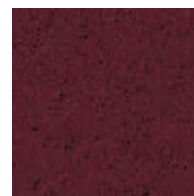
Fairfield CUZ47



Tono SUR23



Glenalmond CUZ62



Magdalene CUZ21

* Blazer is a part of the Haworth Standards program (called Cotswold). The non-standard colors are available in the Alliance program.

[Click here](#) to view full color palette and order memo samples

camira

Hemp

Description

Expertly woven from a blend of wool and hemp, Hemp is a fabric of natural beauty. With a soft handle and inherent flame retardancy, this sustainable textile has a classic plain weave that perfectly showcases its natural composition and multi-tonal coloration.



Technical Information

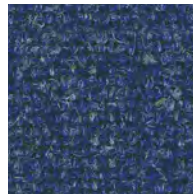
Composition	60% Pure New Wool, 40% Hemp
Environment	Certified to the EU Ecolabel Certified to Indoor Advantage™ “Gold” Rapidly renewable and compostable Made from wool and bast fiber Non metallic dyestuffs
Width	54 inches minimum
Weight	13 1/2 oz/sq yd ±5%
Abrasion	Independently certified to ≥47,500 double rubs
Flammability	California Technical Bulletin 117 - 2013 NFPA 260 + UFAC Class 1 BS 7176 Medium Hazard



Sickle HWP30



Fallow HWP28



Ashworth HWP26



Barn HWP23



Trough HWP20



Dale HWP18



Hedgerow HWP09



Root HWP06



Hectare HWP21



Acre HWP19



Arable HWP04



Dew HWP16



Latymer CUZ33



Seed HWP13



Bale HWP02



Grain HWP27



Plymouth CUZ1R



Woodcroft CUZ2Z



St Andrews CUZ86



Oat HWP05

[Click here](#) to view full color palette and order memo samples

camira

Kyoto

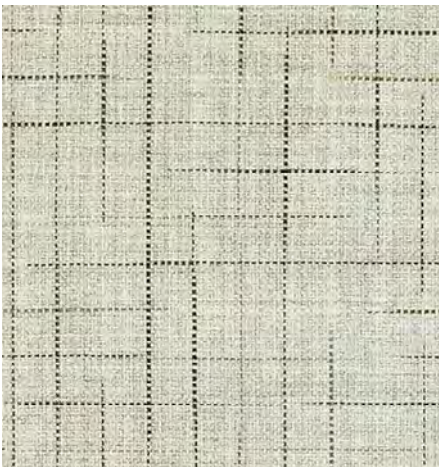
Description

Taking its cue from traditional Japanese textiles, the worsted wool Kyoto features an innovative printed yarn which creates a fluid and fluctuating check, perfectly complemented by the relaxed aesthetic of the lightly textured fabric. Crafted to work in harmony as a textile pairing, the striated grid of Kyoto is beautifully balanced by the versatile, hopsack weave of Sumi - making these two elegantly refined fabrics ideal to feature alongside one another.

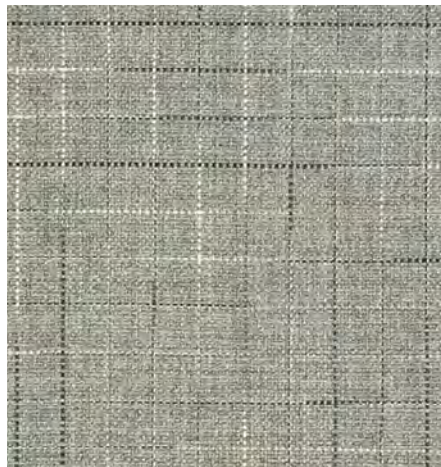


Technical Information

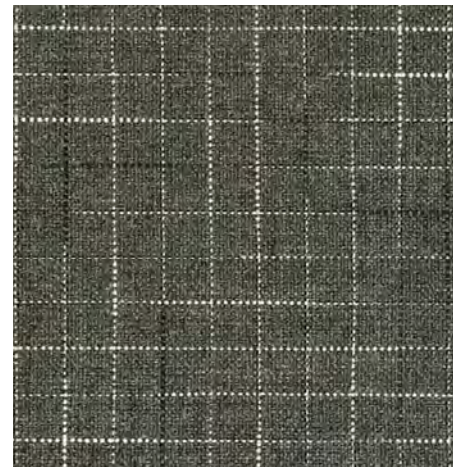
Composition	90% Wool, 10% Nylon
Environment	Certified to the EU Ecolabel Certified to Indoor Advantage™ Gold
Width	54 inches minimum
Weight	10 1/4 oz/sq yd ±7.5%
Abrasion	Independently certified to ≥100,000 cycles
Flammability	California Technical Bulletin 117 - 2013 NFPA 260 + UFAC Class 1 BS 7176 Low Hazard IMO FTP Code (Part 8) ASTM E84 Class 1 or A (Adhered) when FR treated ASTM E84 Class 2 or B (Un-adhered) when FR treated IMO FTP Code (Part 7) when FR treated



Tang KOY01



Tokyo KOY02



Kobe KOY03



Zen KOY04



Muso KOY05



Osaka KOY06

[Click here](#) to view full color palette and order memo samples

camira

Main Line Flax

Description

An intimate blend of pure new wool and harvested flax make this a premium eco-fabric and Camira's most popular product containing naturally grown plant fiber. A symbol of purity, the magic of flax has been woven into human history as one of nature's oldest cultivated plants. Known in Latin as "Linum Usitaatissimum" this means "most useful", this gives us the common term for flax fiber, linen. Flax is an annual plant, with attractive pale blue flowers, producing soft, silky, long and strong textile fiber, which is blended, spun and woven by Camira to create a beautiful fabric with exceptional sustainable characteristics.



Technical Information

Composition	75% Pure New Wool, 25% Flax
Environment	Certified to the EU Ecolabel Certified to Indoor Advantage™ Gold Rapidly renewable and compostable Made from wool and plant fiber
Width	54 inches minimum
Weight	13 oz/sq yd ±5%
Abrasion	Independently certified to ≥100,000 double rubs
Flammability	California Technical Bulletin 117 - 2013 NFPA 260 + UFAC Class 1 BS 7176 Medium Hazard ASTM E84 Class 1 or A (Adhered) ASTM E84 Class 2 or B (Un-adhered) IMO FTP Code (Part 8)



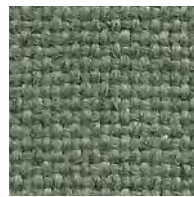
Perivale MLF59



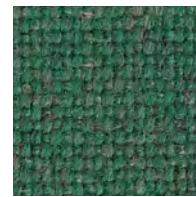
Alperton MLF43



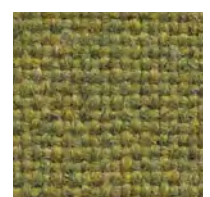
Clapham MLF49



Greenwich MLF52



Harrow MLF54



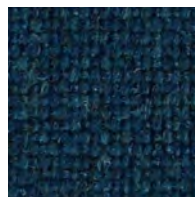
Woodford MLF67



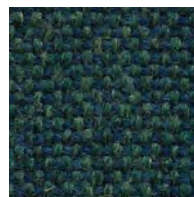
Pinner MLF60



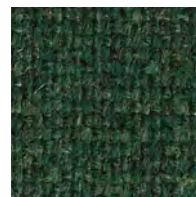
Balham MLF44



Embankment MLF50



Hampstead MLF53



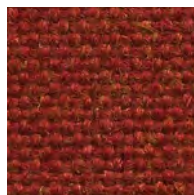
Hornchurch MLF55



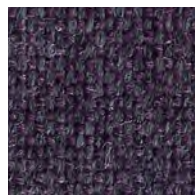
Moorgate MLF57



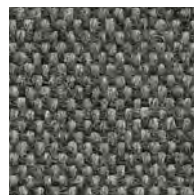
Redbridge MLF61



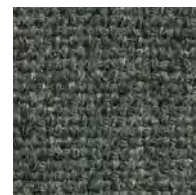
Barking MLF45



Chigwell MLF48



Watford MLF65



Whitechapel MLF66



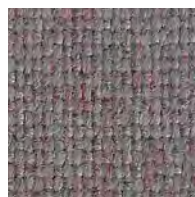
Kentish MLF56



Richmond MLF62



Blackwell MLF46



Brixton MLF47



Stratford MLF64

* Main Line Flax is a part of the Haworth Standards program. The non-standard colors are available in the Alliance program.

[Click here](#) to view full color palette and order memo samples

camira

Main Line Twist

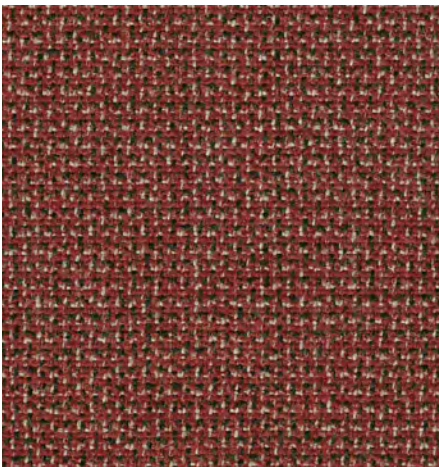
Description

Woven from a blend of wool and flax, Main Line Twist is a tweed effect textile with a beautiful, handwoven appearance. Multi-tonal yarns create a fabric with impossible-to-define color detail, rich in warmth and texture. Made to pair with Main Line Flax, these two textiles are natural partners.

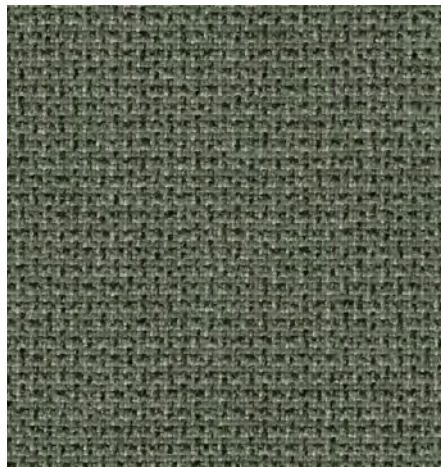


Technical Information

Composition	75% Pure New Wool, 25% Flax
Environment	Certified to the EU Ecolabel Certified to Indoor Advantage™ Gold Rapidly renewable and compostable Made from wool and plant fiber
Width	54 inches minimum
Weight	13 oz/sq yd ±5%
Abrasion	Independently certified to ≥100,000 double rubs
Flammability	California Technical Bulletin 117 - 2013 NFPA 260 + UFAC Class 1 BS 7176 Medium Hazard ASTM E84 Class 1 or A (Adhered) ASTM E84 Class 2 or B (Un-adhered) IMO FTP Code (Part 8)



Cone MLT02



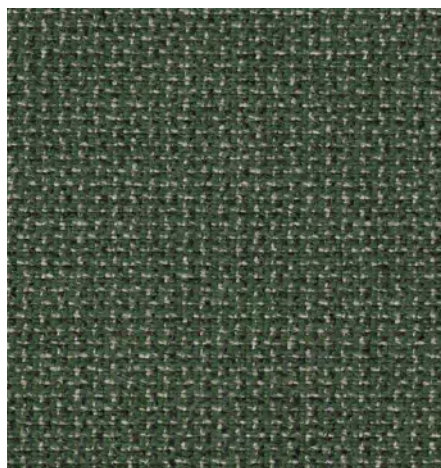
Spin MLT12



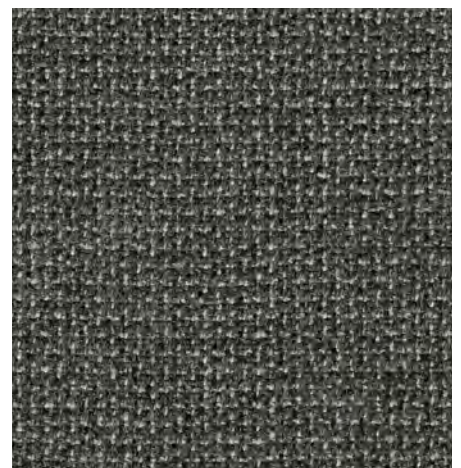
Yarn MLT04



Ply MLT10



Card MLT08



Micron MLT14

[Click here](#) to view full color palette and order memo samples

camira

Sumi

Description

Understated in its elegance and refined in its coloration, Sumi is a fabric which exudes serenity and style. Woven from worsted wool using fine marl yarns, this natural textile embraces a purity of composition and an impeccably simple aesthetic which makes it both without age, yet achingly current. Evoking the ancient Japanese painting technique from which it takes its name, Sumi's perfectly considered palette of organic, refined hues are made to bring timeless beauty to commercial and residential interiors.



Technical Information

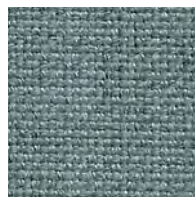
Composition	90% Wool, 10% Nylon
Environment	Certified to the EU Ecolabel Certified to Indoor Advantage Gold
Width	54 inches minimum
Weight	10 1/4 oz/sq yd \pm 7.5%
Abrasion	Independently certified to \geq 100,000 double rubs
Flammability	California Technical Bulletin 117 - 2013 NFPA 260 + UFAC Class 1 BS 7176 Low Hazard IMO FTP Code (Part 8) ASTM E84 Class 1 or A (Adhered) when FR treated ASTM E84 Class 2 or B (Un-adhered) when FR treated



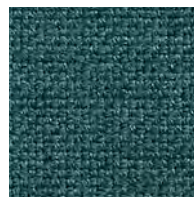
Tang SUR01



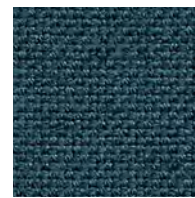
Tokyo SUR02



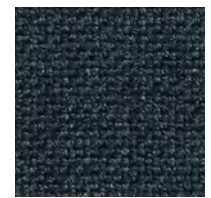
Tamba SUR19



Daisen SUR09



Uto SUR25



Chiba CUR08



Osaka SUR06



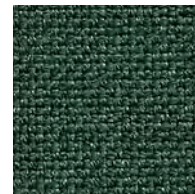
Tamura SUR22



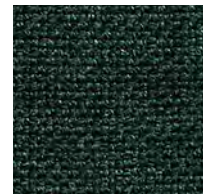
Noda SUR14



Yokote SUR27



Seto SUR18



Kama SUR16



Abiko SUR07



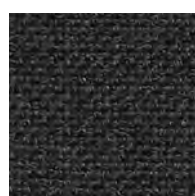
Yabu SUR20



Nagoya SUR25



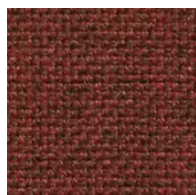
Otaru SUR15



Nara SUR17



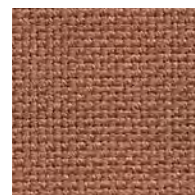
Kobe SUR03



Mobara SUR12



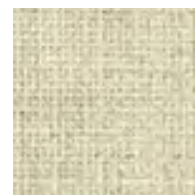
Tono SUR23



Mito SUR21



Narita SUR13



Zen SUR04



Muso SUR05

[Click here](#) to view full color palette and order memo samples

