

Zody II and Zody LX presentation

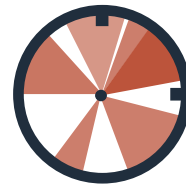
Content

- Value proposition
- Statement Of Line & Features
- Adjustments
- Colours and Materials
- Certifications
- Idea starters & Applications

Workplace Ergonomics have evolved



From 8h assigned work



To a variety of tasks over the workday

Research increasingly points toward the conclusion that...

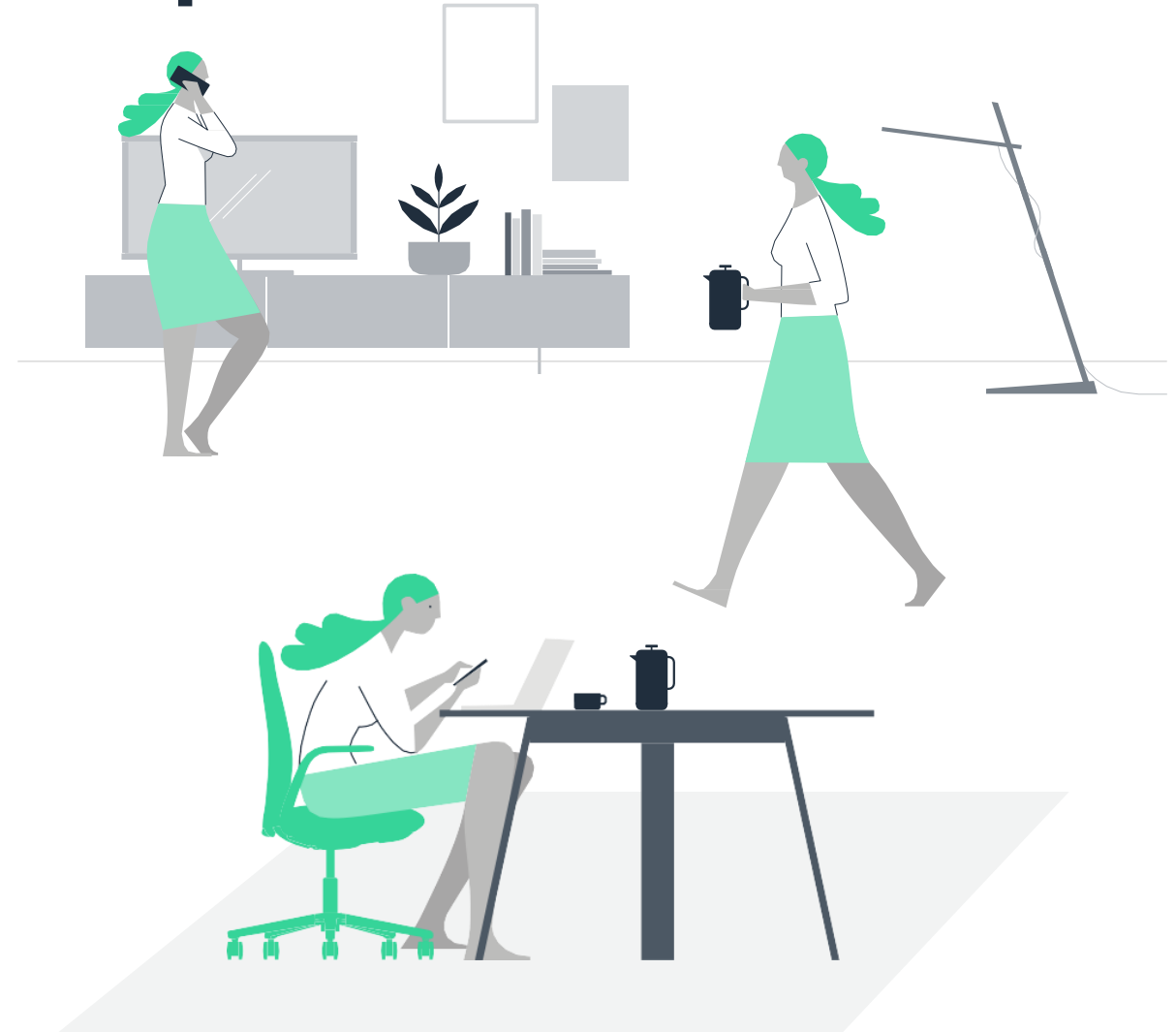


**Sitting is the
new smoking**

How should we design ergonomic spaces?

4 Basic Ergonomic Design Tips

- 1** Design ergonomic workstations to support a variety of postures and proximity to the work surface.
- 2** Encourage users to sit or stand centred at their task or with the computer monitor close to the ergonomically designed work surface.
- 3** Promote healthy postures through strategic worksurface item placement
- 4** Encourage increased movement, steps, and posture changes throughout the workday.



Modern Workplace Ergonomics

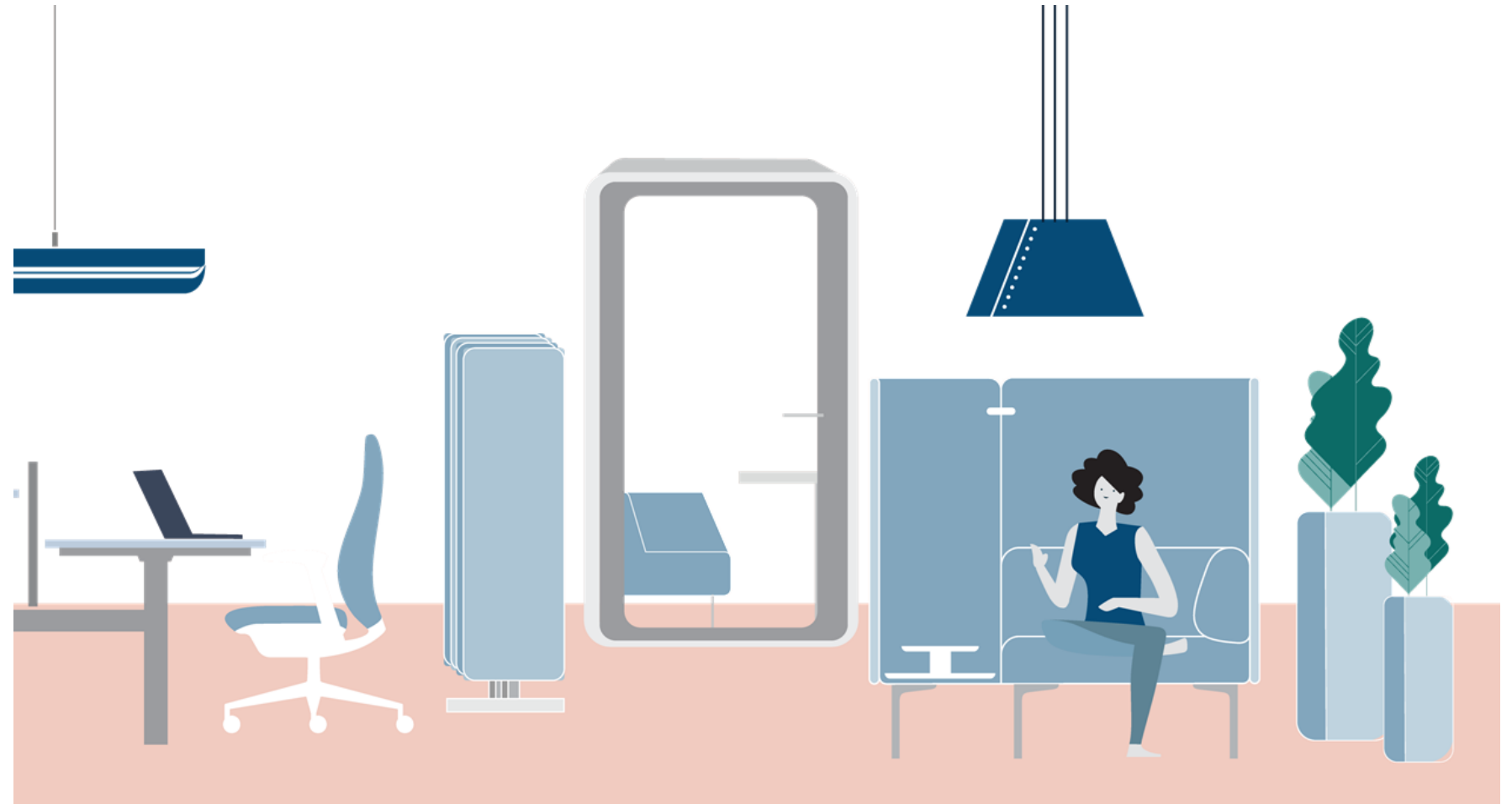
Shape spaces that combat inactivity and positively support workplace wellness initiatives

Affordances: Spaces and objects that encourage Emotional, cognitive and physical support.

Movement: As humans, we are made to **move**. Ultimately, the best posture, position, or location is the next one.

Biophilia: using [biophilic design](#), reduces stress and provides a sense of security.

[Acoustical performance in the Workplace](#) is essential for individual focus work as well as private collaboration.



How to adjust your worksation

- 1 Provide adjustable seating that allows users to assume different postures in upright, reclined, or forward tilt positions.
- 2 Torso to thigh angle should be 90 degrees or greater when sitting.
- 3 When sitting, armrests should not interfere with the user getting close to the work surface.
- 4 Clearance under the worksurface should allow room for legs without contacting the surface above.
- 5 Allow for freedom of movement—there should be no obstructions at foot level.
- 6 The feet should be flat on the floor or the footrest when sitting.



More Support for More Postures = More Control for More People

[Research](#) suggests one of the best ways to increase resilience to stressors in the workplace is to give people more control over their work environment.

The dual posture functionality makes room for perching—a balanced, in-between posture that combines the benefits of sitting and standing.

The new feature makes Zody II and Zody LX ideal for working at a height-adjustable desk. The adjustment controls — used to change seat height, recline angle, recline resistance, etc.—were also redesigned to be more intuitive.



Why support the “perch position”? The benefits of increased mobility through the dual posture function



Users spend less time sitting



Users are more active throughout the day



Users report less discomfort

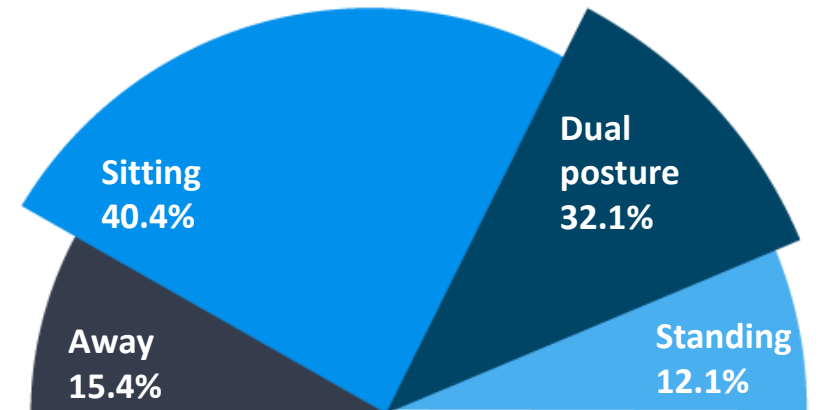
Perching is the catalyst for a healthier workstyle. With reduced sitting time.

Test for Zody II

Time spent



Time spent in postures and away



Changing the ways people work

When Zody II was tested in a recent study, participants:

- Spontaneously adjusted their position **11%** more frequently (from 2.7 changes to 3)
- Reduced the **average length of their sitting sessions by 12%** (101 minutes to 89 minutes)
- Reduced the **average length of their standing sessions by 8%** (48min to 44min)
- Reported **decreased body discomfort** in both frequency and intensity

Reported activities where people preferred using it:



Heads down,
computer work



Talking to a co-worker – an opportunity to be on the same level when having conversations

Based on our seating study results, dual posture was ranked as the position people preferred to do their best work:



Seated
40.0%



Dual posture
43.3%



Standing
16.7%

A closer look: The Perch Position

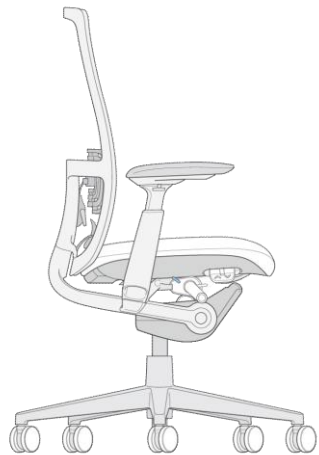
Dual posture provides support for sitting and perching postures

- Support lumbar spine alignment
- Greater change in the position of the legs where they connect to the pelvis
- Decreased opportunity for lower back pain



Our best-selling Zody chair just got better!

- Ergonomic pioneer with a makeover
- Globally Celebrated
- Chair of Firsts



Zody II



Zody LX

- Built on a Legacy
- Informed Comfort
- The Future of Performance Seating



The evolution – A new chapter

Zody Classic



- A classic remaining at the forefront of innovation
- Product of extensive research and development



Zody II



- Retaining the essence of Zody
- Refined controls
- Design upgrade
- More freedom of movement: Dual posture – to make it easy to change postures during the workday



The evolution – A new chapter

Zody Classic



A **classic** remaining at the forefront of innovation
Product of extensive research and development

Zody LX



All the improvements of Zody II.
Fully upholstered back for a softer and more residential
experience without compromising ergonomic performance

Get to know Zody II

Zody II task seating offers enhanced ergonomics to support multiple body shapes and postures.

Its international design sensibilities and extensive breadth of possibilities—from traditional to progressive—offer more design freedom than any other chair to serve any market in the world.



Get to know Zody LX

Still engineered for performance, the Y-brace supports your back while enabling torsional movement. The seat's ergonomic design accommodates various body types and maintains a sleek appearance, particularly with stylish arm caps.

With both the seat and back fully upholstered, our extensive fabric selection ensures that Zody LX can seamlessly integrate into any space with a design suitable for diverse applications, even those with a more residential feel.



Statement Of Line & Features

Statement Of Line Zody II and Zody LX

Zody II (Mesh /Knit Back)

Posture types:

- Task chair
- Dual posture chair
- Task Stool

Zody LX (Fully upholstered)

Posture types:

- Task chair
- Dual posture chair
- Task Stool



Zody II



Zody LX



Features - Zody II

Arms with Aluminum Supports
Armless
Fixed
Height-adjustable
4D

Mechanism
Back Stop
Forward Tilt w/ Back Stop
Manual Weight Control

Base
Plastic
Painted Aluminum
Polished Aluminum



Headrest
New Headrest
(phase 2)

Mesh Back
Mesh Back
Knit Back (phase 2)
Optional upholstered jacket

Lumbar support
None
PAL™
Height-adjustable Lumbar

Seat
Adjustable
Comfort foam

Castors
Plastic Hard or Soft castors

**Dual posture only available with arms, on aluminum base, and with forward tilt.*

Features - Zody LX

Arms with Aluminum Supports
Armless
Fixed
Height-adjustable
4D

Mechanism
Back Stop
Forward Tilt w/ Back Stop
Manual Weight Control

Base
Plastic
Painted Aluminum
Polished Aluminum



Upholstered Back
Fabric
Faux Leather
Leather

Lumbar support
None
Height Adjustable

Seat
Adjustable
Comfort foam

Castors
Plastic, Hard or Soft castors

**Dual posture only available with arms, on aluminum base, and with forward tilt.*

Adjustments

How to adjust your Zody II



[Download Zody II user guide](#)

How to adjust your Zody LX

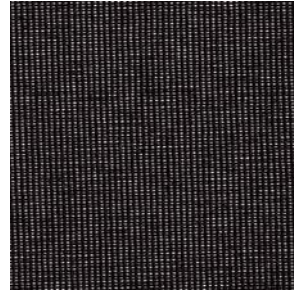


[Download Zody LX user guide](#)

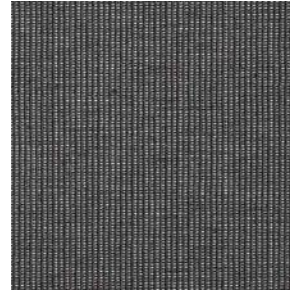
Colours and Materials

Colours & Materials

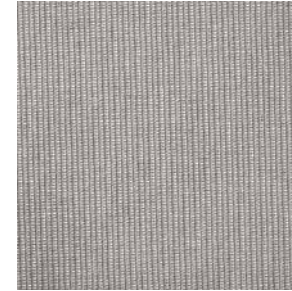
Mesh colours



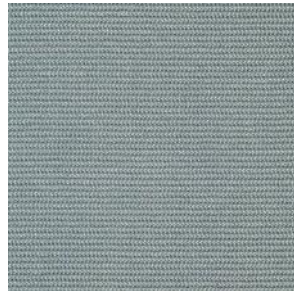
MA201 Support



MA202 Comfort



MA223 Relax



MA209 WATER



MA204 BALSAM

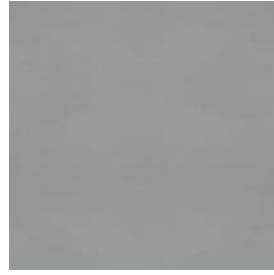
Colours & Materials

Finishes

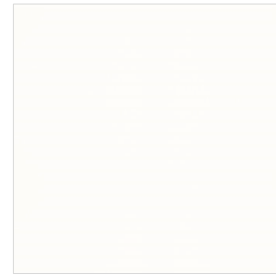
Plastic Frame



Black
TROOF



Fog
TR007



Snow
TROFM

Plastic Base



Black
TROOF

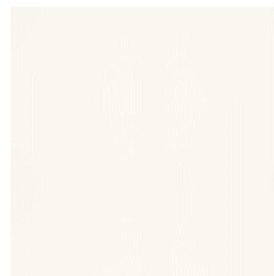


Fog
TR007

Aluminum Base



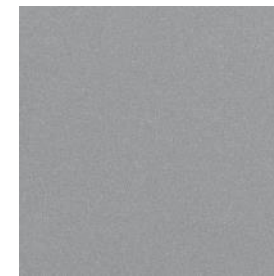
Matte EU Black
TRMTB



Matte EU White
TRMTW



Polished Aluminum
PMOOP



Metallic Silver
TROLE



Colours & Materials

Colour Logic

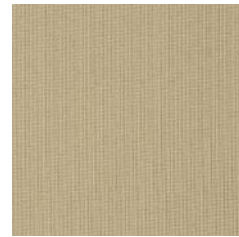
Plastic frame (including headrest trim)	Lumbar Kit (including pad, pelvic)	Arm caps	Base	Mechanism	Control Levers	Castors
Black	Black	Black	Plastic Black Plastic Fog Powder coated aluminum Metallic Silver Powder coated aluminum Matte EU Black Powder coated aluminum Matte EU White Polished Aluminum	Black	Black	Black hard castors for carpet 2-tone Grey hard castors for carpet 2-tone White hard castors for carpet Black soft castors for hard floor
Snow	Fog	Fog		Snow	Fog	
Fog	Fog	Fog		Fog	Fog	

HAWORTH

Colours & Materials

Seat & Back upholstery

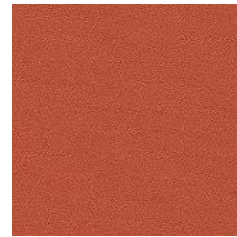
Haworth AP standard fabric collections



Gauge



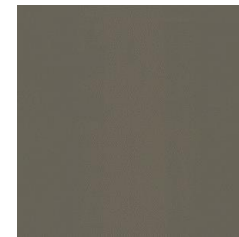
Horizon



Tellure



Wellington faux leather



Chapter faux leather



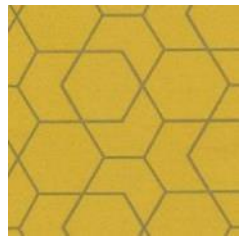
Fighter



Lucia II



Medley



Angle printing



Combo



Era



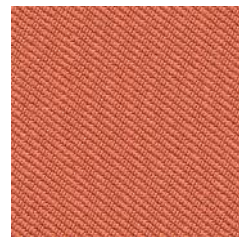
Mozart



X2



Focus



Oceanic



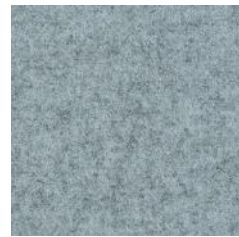
Diagonale



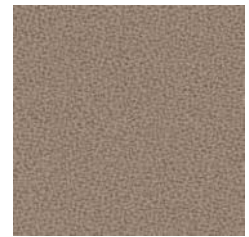
Europost



Synergy



Blazer



New Aquarius



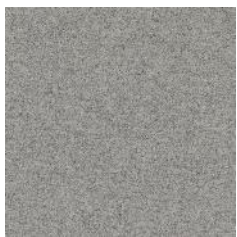
Relate



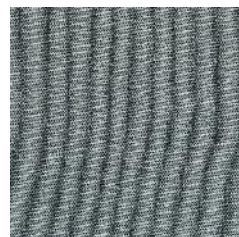
Remix 3



Atlas



Divina Melange 3



Steelcut Trio 3



Hallingdal 65



AP Leather

Certifications

Certifications

- BIFMA Level 2
- BIFMA x5.11
- GS sign, type A
- GreenGuard
- Greenuard Gold
- Quality Office
- FEMB level 3



Idea starters and Applications

HAWORTH

Focus areas



HAWORTH

Focus areas



HAWORTH

Collaborative areas



HAWORTH

Meeting rooms



HAWORTH

Home office



HAWORTH

Home office



Thank you