



HAWORTH
L U N A

The Luna Textiles Collection

lunatextiles.com | [@lunatextiles](https://www.instagram.com/lunatextiles)

About Luna Textiles

Passion defines us as a textile studio; it drives us to create inspirational textiles for the built environment. Committed to excellence, we design with purpose and we focus our expertise on bringing unique textiles to life.

Luna textiles was founded in San Francisco in 1994. Beginning from a passionate spark for design, Luna strives to bring new style to commercial interiors. Our textiles are designed for the commercial, hospitality, healthcare, education, and residential markets.

We offer a complete range of textiles for use in upholstery, panel, drapery, and wall covering applications. With a concern for the well-being of those who inhabit or interact with our products, we select intentional materials with content that ranges from wool and cotton to recycled polyester and nylon. Environmental sustainability is a priority for Luna. Our high-quality

products are often times made from natural, recycled, or rapidly renewable fibers.

The creativity and ingenuity that shaped Luna's beginnings, continue today. As our company grows, we continue to seek out passion for creating aesthetically timeless textiles and provide a thoughtfully curated collection we hope provides practical and inspiring products.



Blueprint

Application

Upholstery

Composition

44% Nylon, 26% Rayon, 18% Polyester,
12% Linen

Abrasion

100,000 double rubs (Wyzenbeek)

Flammability

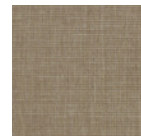
California Technical Bulletin 117-2013

Maintenance

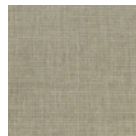
W/S/B

Notes

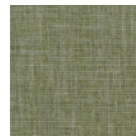
Bleach cleanable



Trace
UPR793



Draft
UPR794



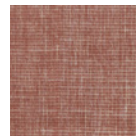
Hillside
UPR795



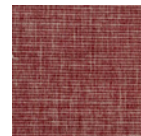
Herschel
UPR796



Sunset
UPR797



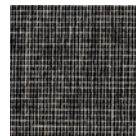
Woods
UPR798



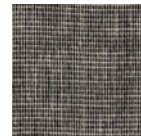
Shulman
UPR799



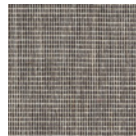
Eventide
UPR800



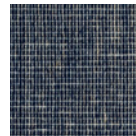
No. 22
UPR801



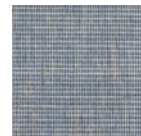
Pierre
UPR802



Julius
UPR803



Stahl
UPR804



Carlotta
UPR805



Photographic fabric scans are not color accurate. Always request actual fabric samples at lunatextiles.com before ordering yardage.

Framework

Application

Upholstery, Panel

Composition

100% Polyester

Abrasion

100,000 double rubs (Wyzenbeek)

Flammability

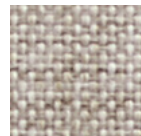
California Technical Bulletin 117-2013,
ASTM E84 Class 1 (Unadhered)

Maintenance

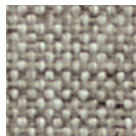
W/S/B

Notes

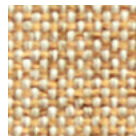
Bleach cleanable



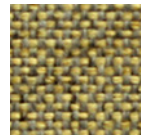
Morris
UMK671



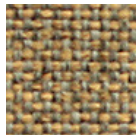
Stoneywell
UMK672



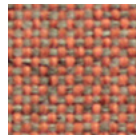
Hampstead
UMK673



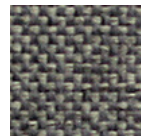
Marston
UMK674



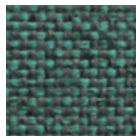
Bedford
UMK675



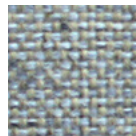
Red House
UMK676



Gamble
UMK677



Morgan
UMK678



Maybeck
UMK679



Photographic fabric scans are not color accurate. Always request actual fabric samples at lunatextiles.com before ordering yardage.

Hush

Application

Upholstery, Panel

Composition

90% Post-Consumer Recycled Polyester,
10% Polyester

Abrasion

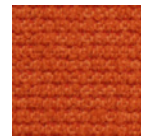
100,000 double rubs (Wyzenbeek)

Flammability

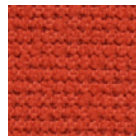
California Technical Bulletin 117-2013,
ASTM E84 Class 1 (Unadhered), NFPA 260

Maintenance

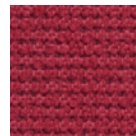
W/S



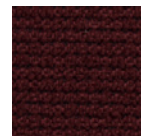
Sorbet
UUS461



Smooch
UUS462



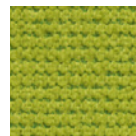
Fuchsia
UUS463



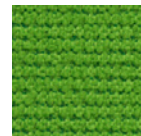
Bordeaux
UUS464



Citrine
UUS465



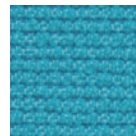
Neon
UUS466



Turf
UUS467



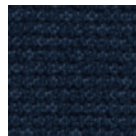
Hunter
UUS468



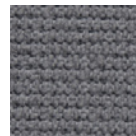
Cruise
UUS469



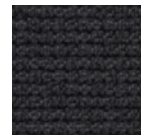
Electric
UUS470



Blazer
UUS471



Pewter
UUS472



Terrier
UUS473



Photographic fabric scans are not color accurate. Always request actual fabric samples at lunatextiles.com before ordering yardage.

Layer

Application

Upholstery

Composition

100% SiO™ Silicone;

Backing: 100% Polyester

Abrasion

225,000+ double rubs (Wyzenbeek)

Flammability

California Technical Bulletin 117-2013,
NFPA 260

Maintenance

W/S/B

Notes

Bleach cleanable

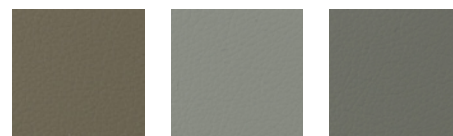
Suitable for indoor/outdoor use



Overlay
UAY001

Canvas
UAY002

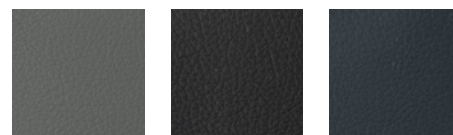
Patina
JAY003



Film
UAY004

Cover
UAY005

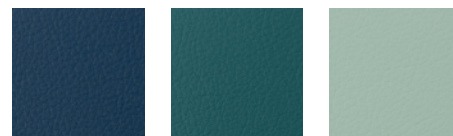
Plane
UAY006



Glass
UAY007

Uniform
UAY008

Level
UAY009



Deep Dive
UAY010

Surface
UAY011

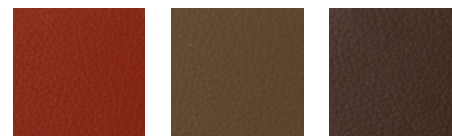
Luster
UAY012



Enamel
UAY013

Sheen
UAY014

Horizon
UAY015



Polish
UAY016

Veneer
UAY017

Coat
UAY018



Photographic fabric scans are not color accurate. Always request actual fabric samples at lunatextiles.com before ordering yardage.

Linen

Application

Upholstery

Composition

45% Linen, 28% Nylon, 16% Viscose,
11% Polyester

Abrasion

100,000 double rubs (Wyzenbeek)

Flammability

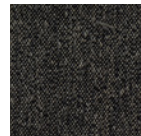
California Technical Bulletin 117-2013,
NFPA 260

Maintenance

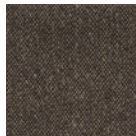
W/S/B

Notes

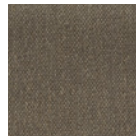
Bleach cleanable



Checkerboard
UEN551



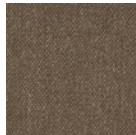
Morel
UEN552



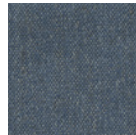
Puppy
UEN553



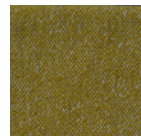
Whey
UEN554



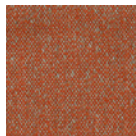
Doe
UEN555



Lullaby
UEN556



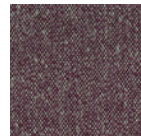
Sage
UEN557



Apricot
UEN558



Runway
UEN559



Mulberry
UEN560



Mascot
UEN561



Photographic fabric scans are not color accurate. Always request actual fabric samples at lunatextiles.com before ordering yardage.

Mason

Application

Upholstery

Composition

100% Wool

Abrasion

49,000 cycles (Martindale)

Flammability

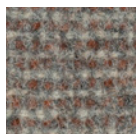
California Technical Bulletin 117-2013

Maintenance

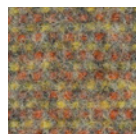
S



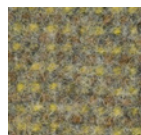
Artifact
USN881



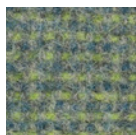
Potter
USN882



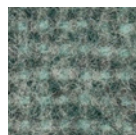
Kiln
USN883



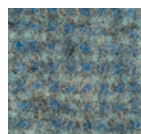
Clay
USN884



Greenware
USN885



Celadon
USN886



Glaze
USN887



Photographic fabric scans are not color accurate. Always request actual fabric samples at lunatextiles.com before ordering yardage.

Metro

Application

Upholstery, Panel

Composition

51% Post- Consumer Recycled Polyester,
49% Polyester

Finish

PFOA-Free Stain Resistant Finish

Backing

Acrylic

Abrasion

100,000 double rubs (Wyzenbeek)

Flammability

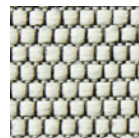
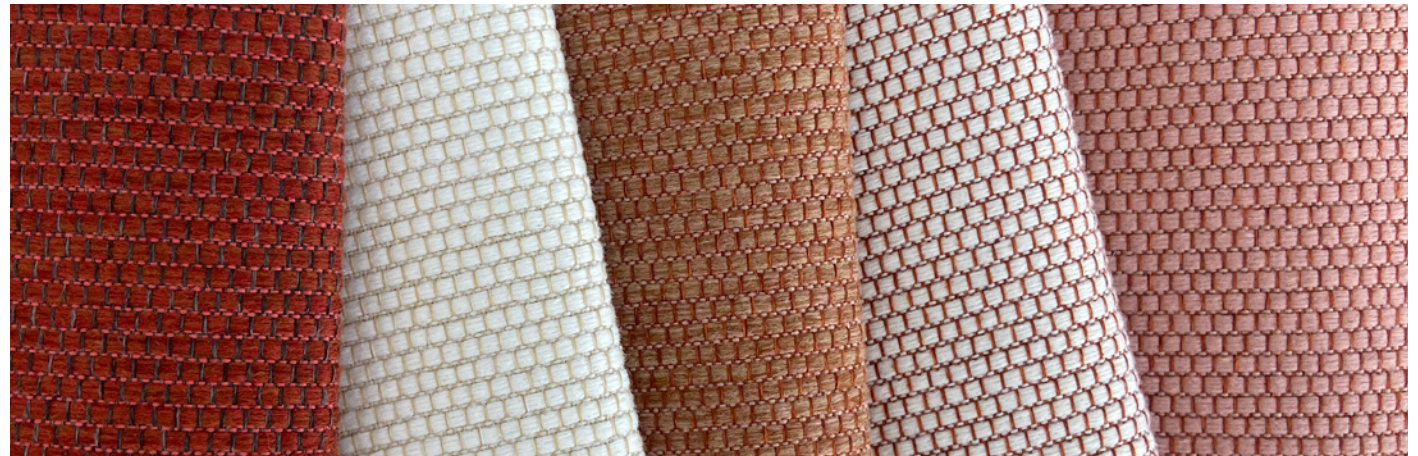
California technical bulletin 117-2013,
ASTM E84 Class 1 (Unadhered)

Maintenance

W/S/B

Notes

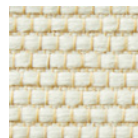
Bleach cleanable



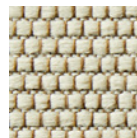
Times Square
UTR901



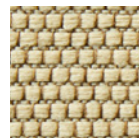
Westminster
UTR902



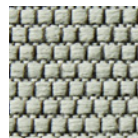
Astor
UTR903



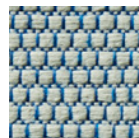
Varenne
UTR904



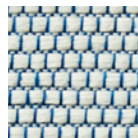
Avtovo
UTR905



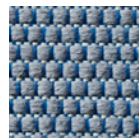
Concorde
UTR906



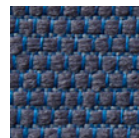
Waterloo
UTR907



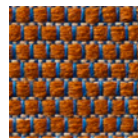
Union Square
UTR908



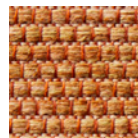
Victoria
UTR909



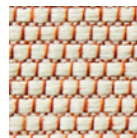
Oxford Circus
UTR910



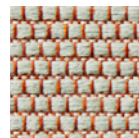
Liverpool
UTR911



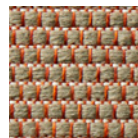
Paddington
UTR912



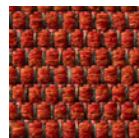
Grand Central
UTR913



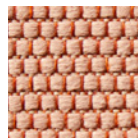
Penn
UTR914



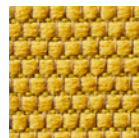
Van Ness
UTR915



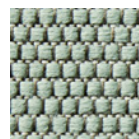
Monroe
UTR916



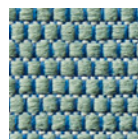
Lexington
UTR917



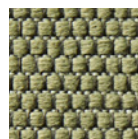
Castro
UTR918



Lorimer
UTR919



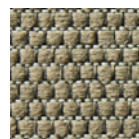
Toledo
UTR920



Judah
UTR921



Auber
UTR922



London Bridge
UTR923



Dearborn
UTR924



Millennium
UTR925



Photographic fabric scans are not color accurate. Always request actual fabric samples at lunatextiles.com before ordering yardage.

Nifty

Application

Upholstery, Panel

Composition

50% Post-Industrial Recycled Polyester,
50% Polyester

Abrasion

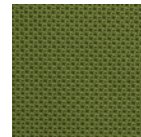
100,000 double rubs (Wyzenbeek)

Flammability

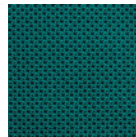
California Technical Bulletin 117 E, ASTM E84
Class 1 (Unadhered), NFPA 260

Maintenance

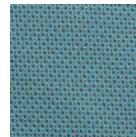
W/S



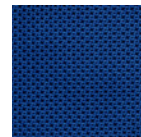
Alligator
UNI221



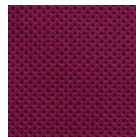
Turquoise
UNI222



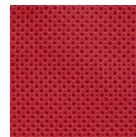
Celeste
UNI223



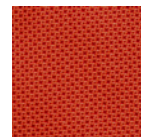
Cobalt
UNI224



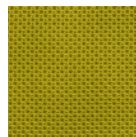
Rose
UNI226



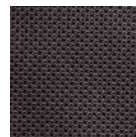
Scarlet
UNI227



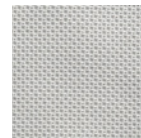
Habanero
UNI228



Citron
UNI229



Pumice
UNI230



Cottontail
UNI232



Photographic fabric scans are not color accurate. Always request actual fabric samples at lunatextiles.com before ordering yardage.

